

Effect of organic matrices on the determination of the trace element chemistry (Mg, Sr, Mg/Ca, Sr/Ca) of aragonitic bivalve shells (*Arctica islandica*) —Comparison of ICP-OES and LA-ICP-MS data

BERND R. SCHÖNE,^{1*} ZENGJIE ZHANG,¹ DORRIT JACOB,¹ DAVID P. GILLIKIN,² THOMAS TÜTKEN,³
DIETER GARBE-SCHÖNBERG,⁴ TED MCCONNAUGHEY⁵ and ANALÍA SOLDATI¹

¹Institute of Geosciences and Earth System Science Research Center, University of Mainz,
Johann-Joachim-Becherweg 21, 55128 Mainz, Germany

²Department of Earth Science and Geography, Vassar College, Poughkeepsie, NY 12604, U.S.A.

³Steinmann Institute of Geology, Mineralogy and Palaeontology, University of Bonn,
Poppelsdorf Castle, 53115 Bonn, Germany

⁴Institute of Geosciences, University of Kiel, Ludewig-Meyn-Straße 10, 24118 Kiel, Germany

⁵2906 Norman Dr., Boise, ID 83704, U.S.A.

(Received September 1, 2008; Accepted May 31, 2009)

The element chemistry of biogenic carbonates can provide important data on past environments. However, the Sr/Ca and Mg/Ca ratios as well as the Mg and Sr concentrations of biological carbonates, especially aragonitic bivalves often depart from apparent thermodynamic equilibrium. When measured *in situ* by means of LA-ICP-MS, the Mg concentration is often substantially enriched (two- to threefold) near the organic-rich, annual growth lines. To test the hypothesis that some organic components exert a major influence on the skeletal metal content, the element chemistry of different shell components (insoluble organic matrix, IOM; dissolved CaCO₃ and soluble organics, SOM) of *Arctica islandica* was measured by means of ICP-OES and LA-ICP-MS. The ICP-OES data indicate that the IOM is strongly enriched in Mg (130 ppm) and depleted in Sr and Ca (10 ppm and 0.22 wt%, respectively) when compared to the whole biomineral (Mg: 68 to 99 ppm, Sr: 860 to 1,060 ppm, Ca: ~35.72 wt%). Although the average relative abundance of the IOM barely exceeds 0.46 wt%, its chemical composition in combination with its heterogeneous distribution across the shell can significantly increase estimates of the Mg concentration if measured *in situ* by LA-ICP-MS. Depending on the distribution of the IOM, the Ca concentration may be significantly lower locally than the average Ca concentration of the whole shell (35.72 wt%). If this remains undetected, the Mg concentration of shell portions with higher than average IOM content is overestimated by LA-ICP-MS and, conversely, the Mg concentration is underestimated in shell portions with lower than average IOM content. Removal of the IOM prior to the chemical analysis by LA-ICP-MS or mathematical correction for the IOM-derived magnesium concentrations is therefore strongly advised. The different chemistry of the IOM may also exert a major control on the trace element to calcium ratios. Shell portions enriched in IOM will show up to 200 times higher Mg/Ca and up to two times higher Sr/Ca ratios than the average shell of *A. islandica*. Without removal of the IOM prior to the analysis, Mg/Ca and Sr/Ca ratios of shell portions with higher IOM content cannot be used as paleothermometers. Because it is currently impossible to remove the IOM prior to chemical analyses by LA-ICP-MS, we recommend the use of wet chemical techniques (= possibility to separate and measure individual shell components) such as ICP-OES at the expense of lower sampling resolution. The results of this study will significantly improve our understanding of shell-based climate and environmental proxies.

Keywords: trace elements, bivalve shell, organics, LA-ICP-MS, ICP-OES, sclerochronology

INTRODUCTION

Sr/Ca and Mg/Ca ratios of biogenic carbonates can provide quantifiable data on ambient water temperature during biomineralization. This has been empirically dem-

onstrated for a variety of different organisms including echinoids (Pilkey and Hower, 1960), brachiopods (Lowenstam, 1961), bivalves (Dodd, 1965, 1967), corals (Smith, 1979; Beck *et al.*, 1992; Mitsuguchi *et al.*, 1996), foraminifera (Nürnberg *et al.*, 1996) and ostracods (Corrége, 1993). These studies were also complemented by inorganic precipitation experiments (Kinsman and Holland, 1969; Mucci, 1987). As temperature increases, the Sr/Ca and Mg/Ca ratios of abiogenic aragonites de-

*Corresponding author (e-mail: schoeneb@uni-mainz.de)

crease (Kinsman and Holland, 1969; Gaetani and Cohen, 2006), while those of abiogenic calcites increase (Katz, 1973; Mucci, 1987). In addition, strontium in calcite is strongly controlled by precipitation rate (Kinsman and Holland, 1969). The orthorhombic crystal structure of aragonite best accommodates the larger Sr^{2+} ion, while the rhombohedral crystal structure of calcite best accommodates the smaller Mg^{2+} ion. Therefore, aragonite often contains about 100 times more strontium than does calcite. Nonetheless, Sr/Ca and Mg/Ca ratios in either polymorph of calcium carbonate can provide serviceable paleothermometers.

However, the Sr/Ca and Mg/Ca ratios of biological carbonates often depart from apparent thermodynamic equilibrium. Mg/Ca ratios of some calcitic (Dodd, 1965; Lorens and Bender, 1977; Freitas *et al.*, 2005; Lorrain *et al.*, 2005; Lazareth *et al.*, 2007) and aragonitic bivalve shells (Takesue and van Geen, 2004) are lower than predicted by thermodynamics. Shell Mg/Ca and Sr/Ca ratios can also vary contradictorily among different species and even among conspecific and contemporaneous specimens from one locality (corals: Cardinal *et al.*, 2001; brachiopods: England *et al.*, 2007; bivalves: Dodd, 1965; Gillikin *et al.*, 2005a; Lorrain *et al.*, 2005; Freitas *et al.*, 2008). Dodd (1965) also reported an inverse relation between temperature and Sr/Ca ratios in the nacreous (aragonitic) shell layer of *Mytilus edulis*, while Gillikin *et al.* (2005a) observed the opposite in the aragonitic shell of *Saxidomus gigantea*. The ratios of trace elements to calcium show little consistency in the long-lived bivalve mollusk, *Arctica islandica* (Toland *et al.*, 2000). Skeletal Mg and Sr contents sometimes correlate with skeletal growth (corals: de Villiers *et al.*, 1995; bivalves: Swan, 1956; Takesue and van Geen, 2004; Gillikin *et al.*, 2005a; Lorrain *et al.*, 2005), and also with ontogenetic age (Palacios *et al.*, 1994; Freitas *et al.*, 2005). Such findings suggest that non-thermodynamic factors (e.g., an active, protein-mediated removal of Mg from the inorganic carbonate phase during biomineralization) influence the incorporation of trace elements into biogenic carbonates.

It has also been suggested that organics may influence the skeletal metal content, but such relations have not been quantified (Allison, 1996; Nürnberg *et al.*, 1996; Watanabe *et al.*, 2001; Dauphin *et al.*, 2003; Takesue and van Geen, 2004; Foster *et al.*, 2008). Organics occur both within (intracrystalline; Pokroy *et al.*, 2006; Jacob *et al.*, 2008) and between (intercrystalline) CaCO_3 crystals. During shell formation, these organic components mediate biomineralization (Lowenstam, 1981; Veis, 2003). The main biopolymers of bivalve mollusks are water-insoluble structural proteins (β -chitin), water-soluble polyanionic proteins and silk-like proteins (Levinkalisan *et al.*, 2001; Sudo *et al.*, 1997). Some of these proteins can be enriched in certain trace elements, fore-

most magnesium (Cowan, 1991). Nürnberg *et al.* (1996) estimated that up to 5% of Mg in bulk foraminiferan tests may be associated with proteins rather than with calcite. Likewise, Watanabe *et al.* (2001) showed that up to 40% of the magnesium in coral aragonite is not lattice-bound. Trace elements released from organic components during sample preparation or measurement may then increase estimates of Mg concentrations and Mg/Ca ratios of biominerals. The metal contents of bivalve organs and tissues have been examined (e.g., Bustamante and Miramand, 2004), but no study has yet quantified the Mg and Sr content of isolated shell organic matrices and CaCO_3 phases.

Analytical techniques such as laser ablation—inductively coupled plasma—mass spectrometry (LA-ICP-MS) and ion microprobe are now widely used to study the skeletal composition *in situ*. LA-ICP-MS especially offers undeniable advantages with respect to spatial sampling resolution and sample throughput. But combining results for CaCO_3 crystals and organic matrices potentially complicates interpretations (Watanabe *et al.*, 2001). Only a few studies have compared results from LA-ICP-MS with wet chemical techniques that separate the organic and inorganic phases (Rosenheim *et al.*, 2005; Gillikin *et al.*, 2005a).

This paper quantifies the organic matrix and CaCO_3 fractions in shells of *A. islandica* and presents the Mg, Sr and Ca concentrations and Mg/Ca and Sr/Ca ratios for both phases, using wet chemical techniques combined with inductively coupled plasma—optical emission spectrometry (ICP-OES). It compares these results with LA-ICP-MS analyses. The benefits of special pretreatment methods and mathematical data corrections are then addressed. The results improve our understanding of trace element chemistry of biogenic skeletons, and can pave the road toward better climate and environmental proxies.

MATERIAL AND METHODS

Eight specimens of *Arctica islandica* were used in the present study (Table 1). The bivalves were collected alive by dredging from ca. 25 to 55 m of water depth northwest of Iceland and from the North Sea (Table 1). Soft tissues were removed, and ligament and periostracum were physically abraded. The outer ca. 1000 μm of each valve were also mechanically removed to eliminate adhering sediment and shell materials possibly altered by early diagenesis. The valves were then ultrasonically rinsed with de-ionized water.

Sample preparation for chemical analyses of different shell components

Five specimens were chosen (ICE06-A1 to A5; Table

1) for the analysis of Mg, Sr and Ca contents of the different shell components, i.e., the insoluble organic matrix (IOM), the soluble organics (SOM = sugars, proteins etc.) and the inorganic calcium carbonate component (CaCO₃). The shells were ultrasonically rinsed multiple times in millipore (18.2 MΩ) water, dried and weighed. Both valves of specimens ICE06-A1 and ICE06-A2 and one valve of each of the remaining specimens (whole, uncrushed valves) were gently dissolved in 5% ultrapure HNO₃ over several days before centrifuging the solution at 3700 RPM for 30 min. We used a diluted acid to ensure that water-insoluble organics (IOM) were not dissolved and could be analyzed separately. Then, the IOM of each solution was extracted and rinsed multiple times in millipore water, air-dried and weighed. The IOM of one valve of specimens ICE06-A1 and ICE06-A2 were mounted on glass slides and their chemical composition determined by means of LA-ICP-MS (Table 1). The other IOM samples were completely digested in a 1:1 mixture of 30 vol% ultrapure H₂O₂ plus 65 vol% ultrapure HNO₃ at 90°C (Bellotto and Miekeley, 2007).

After extraction of the IOM, the remaining fluid consisted of SOM and dissolved CaCO₃. For two specimens (Table 1), the SOM with molecular sizes larger than 3kDa (SOM_{lp}) was separated from SOM with proteins smaller than 3kDa (SOM_{sp}) plus dissolved CaCO₃ by ultrafiltration. To achieve this, the fluids were centrifuged at 3,700 RPM for more than 90 min in Vivispin filters (Sartorius, 20 ml). Additionally, the solutions containing SOM_{lp} were also rinsed in millipore water. In order to prevent precipitation of trace elements, we added 1 ml 65% ultrapure HNO₃ to each of the dissolved shell components (IOM, SOM + CaCO₃, SOM_{lp}, SOM_{sp} + CaCO₃). All wet fractions were weighed and then analyzed in a Spectro Ciros Vision ICP-OES at the University of Mainz.

Preparation of shell cross-sections for analyses of crystal fabric and chemistry

One valve of each of the remaining three specimens was mounted on a plexiglass cube and a quick-drying epoxy resin applied to the outer and inner valve surface along the axis of maximum growth (Table 1). On that axis, one or two *ca.* three-millimeter-thick sections were cut from each valve with a Buehler low-speed saw. The cross-sectioned slabs were mounted on glass slides, ground on glass plates with 800 and 1200 grit powder and finally polished on a Buehler G-cloth with 1 μm Al₂O₃ powder. Prior to the analyses, all samples were ultrasonically rinsed in millipore water.

Chemical analyses of shell cross-sections (LA-ICP-MS and ICP-OES)

One polished cross-section of each of the three specimens HM-Fla86-A1, WH241-597-A1R and DBG13.2-A1

Table 1. List of Arctic *islandica* specimens used in the present study. IOM = water-insoluble organic matrix, SOM = water-soluble organic matrix, SOM_{sp} = molecular sizes smaller than 3kDa, SOM_{lp} = molecular sizes larger than 3kDa.

Shell ID	Locality	Cross-sectioned slabs		LA-ICP-MS		ICP-OES (triplicate analyses)				SEM	Biochemical staining	
		Whole	Sectioned	Whole biom. IOM	Sectioned IOM	Whole biom. IOM	Sectioned IOM	CaCO ₃ + SOM	CaCO ₃ + SOM _{sp}			SOM _{lp}
DBG13.2-A1	North Sea	2	9									
WH241-597-A1	North Sea	1	52									×
HM-Fla86-A1	Iceland	2	319		19							
ICE06-A1	Iceland			3		1		1				
ICE06-A2	Iceland			2		1		1		1		
ICE06-A3	Iceland					1		1		1		
ICE06-A4	Iceland					1		1		1		
ICE06-A5	Iceland					1		1		1		

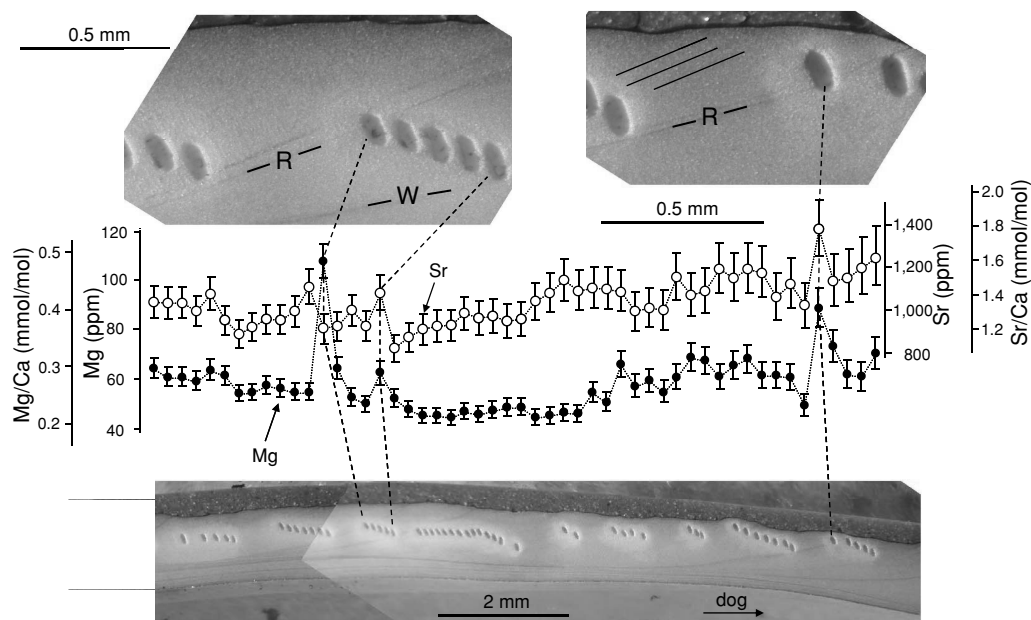


Fig. 1. Seasonal strontium and magnesium concentration and Mg/Ca and Sr/Ca ratios in cross-sectioned shell slab of *Arctica islandica* (specimen WH241-597-A1; Table 1). Data were obtained by LA-ICP-MS. Spots measured 100 μm (long axis) in the direction of growth. Strongly enriched Mg content was observed at reproduction (“R”) lines that formed during warm summer temperatures. These Mg peaks stood out significantly from values measured between consecutive reproduction lines. A slightly higher Mg value also occurred at the “W” line that formed during January/February. The Mg curve had a saw-toothed appearance, whilst the Sr values formed a relatively smooth curve with far less outstanding peaks at “R” and “W” lines. After sampling, the shells were immersed in Mutvei’s solution that stained portions with a higher organic content deep blue (dark grey in black and white print) and those with less organics light blue (light grey). Note de-colored craters (white to light grey) around laser ablation spots. dog = direction of growth. Error bars in standard deviation units (1σ).

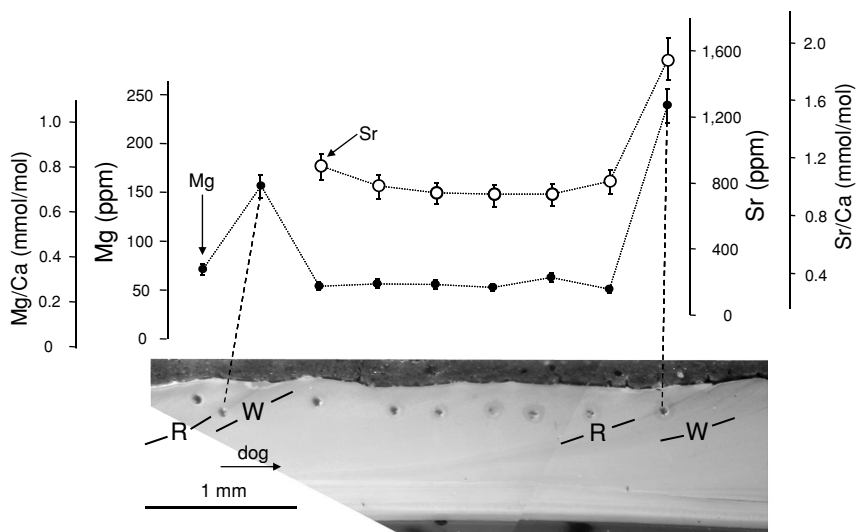


Fig. 2. Seasonal strontium and magnesium concentration and Mg/Ca and Sr/Ca ratios in cross-sectioned shell slab of *Arctica islandica* (specimen DBG1.2-A1; Table 1). See description in caption of Fig. 1. dog = direction of growth. Error bars in standard deviation units (1σ). LA spot size is 50 μm in diameter.

Table 2. Results of chemical analyses of different shell components by means of LA-ICP-MS and ICP-OES. The chemistry and trace element to calcium ratios of the IOM deviated significantly from that of the other shell components such as CaCO₃ and SOM (last four columns from left). Results on IOM chemistry revealed by ICP-OES and LA-ICP-MS were statistically invariant (Wilcoxon *t*-statistics: *p* > 0.05) if a Ca value of 0.22 wt% (given by ICP-OES) was assumed for the internal standard for LA-ICP-MS. However, if it remained unperceived that the laser coincidentally hit a shell portion with pure IOM, LA-ICP-MS would return unrealistically high Mg and Sr values. For meaning of abbreviations see captions of Table 1. Errors are given as standard deviation (1σ).

ICP-OES	Rel. abundance (wt%)	Whole biomineral		IOM	CaCO ₃ + SOM	CaCO ₃ + SOM _{sp}	SOM _{sp}
		100	Calculated whole biomineral				
		HM-Fla86-A1	ICE06-A1...5	ICE06-A1...5	ICE06-A1+2	ICE06-A1+2	ICE06-A1+2
		19	5	5	2	2	2
N							
Mg (ppm)		99 ± 25	68 ± 19	130 ± 152	77 ± 20	78 ± 19	63 ± 37
Sr (ppm)		860 ± 128	1,060 ± 170	10 ± 8	820 ± 373	799 ± 435	1,051 ± 370
Ca (%)		35.72 ± 3.47	35.88 ± 2.82	0.22 ± 0.15	36.51 ± 1.98	37.01 ± 2.91	30.18 ± 9.64
Mg/Ca (mmol/mol)		0.46 ± 0.10	0.31 ± 0.09	100.42 ± 67.96	0.35 ± 0.11	0.35 ± 0.11	0.34 ± 0.10
Sr/Ca (mmol/mol)		1.10 ± 0.07	1.35 ± 0.22	1.99 ± 0.47	1.03 ± 0.41	0.99 ± 0.46	1.59 ± 0.05

LA-ICP-MS	Shell ID	HM-Fla86-A1	ICE06-A1+2	
			ICE06-A1+2	ICE06-A1+2
		319	2	2
N				
Mg (ppm)		106 ± 26	134 ± 121	21,757 ± 19,669
Sr (ppm)		864 ± 59	7 ± 1	1,137 ± 133
Ca (%)		35.72	0.22	35.72
Mg/Ca (mmol/mol)		0.47 ± 0.11	100.52 ± 90.63	100.44 ± 90.80
Sr/Ca (mmol/mol)		1.07 ± 0.06	1.50 ± 0.20	1.46 ± 0.17

was analyzed by LA-ICP-MS (Table 1). Laser ablation spots in the outer shell layer measured 50 μm in diameter in specimens HM-Fla86-A1 and DBG13.2-A1, and 100 μm in WH241-597-A1R. Specimens DBG13.2-A1 and WH241-597-A1R were used to study the intra-annual (seasonal) variations of trace elements. Therefore, only the youth portions of these shells were sampled, i.e., the shell portions that formed when the bivalves grew at the fastest rates. Each laser spot represented a shell portion that formed within days or a few weeks. In order to analyze the average trace element content, however, a shell portion near the ventral margin of specimen HM-Fla86-A1 was analyzed. The centers of individual laser spots were only approx. 3.45 μm apart from each other and formed a line of measurements (Fig. 4). The lifespan of this bivalve exceeded 200 years, and the average annual increment width at the ventral margin was narrower than the diameter of a laser spot. Thus, each LA-ICP-MS sample from this specimen represented at least one year.

From the other polished slab of specimen HM-Fla86-A1, aragonite powder was milled under a binocular microscope from the same shell portion that was analyzed by LA-ICP-MS (Table 1). We employed a cylindrical diamond drill bit (1 mm diameter, Komet/Gebr. Brasseler GmBH & Co. KG model No. 835 104 010) mounted on a Rexim Minimo drill. Spatial milling resolution parallel to the growth lines was about 55 μm . Each sample swath (55 μm \times 1.8 mm) stretched from near the outer shell surface and toward the inside of the shell (approximately 2.8 mm away from the original outer shell surface; it should be noted that the LA-ICP-MS samples were located approx. 1.5 to 2 mm away from the original outer shell surface, i.e., *ca.* in the middle of the OES-sample swath; Fig. 4). Each of the shell powder samples weighed *ca.* 150 to 400 μg . Powder samples were completely dissolved in 1 ml 70 vol% ultrapure HNO_3 and visually confirmed to be without residue before dilution in 4 ml millipore water. These samples were analyzed in a Spectro CIROS^{CCD} SOP ICP-OES at the University of Kiel.

Biochemical staining and analysis of the shell crystal fabric

In order to identify the distribution of organic components of the shell and study the crystal fabric (Fig. 3), the remaining polished slab of specimen DBG13.1-A2 and the cross-section of WH241-597-A1R that was previously used for LA-ICP-MS were immersed in Mutvei's solution for 25 and 2 min, respectively, at 37–40°C under constant stirring (Schöne *et al.*, 2005a). Immediately afterward, the etched sections were rinsed in de-ionized water and allowed to air-dry. Mutvei's solution consists of 0.5 vol% acetic acid, 12.5 vol% glutardialdehyde and *ca.* 5 g Alcian Blue per liter solution. The acid gently etches the carbonate portions, while the glutardialdehyde

preserves the organic matrix in three dimensions. Simultaneously, the Alcian Blue stains organic components deeply blue. Mutvei's solution is adequate for resolving shell internal growth structures. For scanning electron microscopy (SEM; Hitachi S 4300) the etched shell section of DBG13.1-A2 was sputter-coated with a 30 Å gold layer.

LA-ICP-MS analyses

Solid shell material (Figs. 1, 2 and 4; Table 2) and IOM (Table 2) were analyzed for Mg, by measurement of the isotope ^{24}Mg , and Sr as ^{88}Sr by LA-ICP-MS at the University of Mainz. Ablation was achieved with a NewWave Research UP-213 Nd:YAG laser ablation system (New Wave Research), using a pulse rate of 4–10 Hz, a pulse energy of ~ 0.3 mJ per spot, and 50 and 100 μm spot diameters with Ar (or a He/Ar mixture) as ablation gas. Analyses were performed on an Agilent 7500ce ICP-MS coupled to the UP-213 platform (one point per peak and 10 ms dwell time) following methods described in Jacob (2006). SRM NIST SRM 612 was used as the external standard (Pearce *et al.*, 1997), and the U.S. Geological Survey glass standard BCR-2G was measured to monitor accuracy and instrumental drift. ^{43}Ca was used as the internal standard with Ca concentrations measured by ICP-OES. Detection limits generally range between 0.001 and 0.5 ppm for these elements. Relative standard deviations (based on repeated measurements of the external standard) were 7.2% for Mg and 7.8% for Sr.

ICP-OES analyses

Dissolved shell samples of five specimens (ICE06-A1 to A5; Table 2) were analyzed with a Spectro CIROS Vision ICP-OES system at the University of Mainz and sample HM-Fla86-A1 with a Spectro CIROS^{CCD} SOP ICP-OES at the University of Kiel (Table 2). We followed the techniques described by Schrag (1999) and de Villiers *et al.* (2002). Relative standard deviations (triplicate measurements of each sample) were 0.99% for Ca, 1.39% for Mg, and 1.34% for Sr; accuracy for these elements was better than 0.5%. Mixed standard solutions were prepared from single element standards of Mg, Sr and Ca in proportions to reflect those observed in bivalve shells and organic components.

RESULTS

According to our findings, shells of *Arctica islandica* consist, on average, of 99.54 wt% calcium carbonate (CaCO_3) and water-soluble organic matrix (SOM), and 0.46 ± 0.19 wt% water-insoluble organic matrix (IOM) (Table 2). In what follows, CaCO_3 + SOM + IOM are referred to as “whole biomineral”.

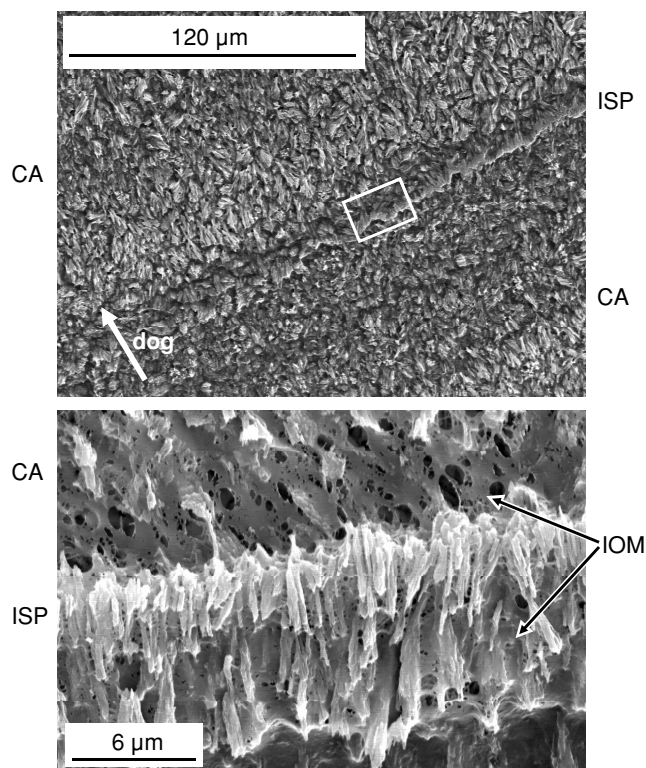


Fig. 3. SEM image of shell portion *Arctica islandica* (specimen DBG1.2-A1) near major annual growth line (reproduction line). Prior to coating with Au, sample was immersed in Mutvei's solution for two minutes. Cross-acicular crystal fabric (CA) prevails between major growth lines, whereas irregular simple prismatic crystal fabric (ISP) is observed at the growth line. Note that CA crystal sizes decrease prior to growth line. Because each crystal is surrounded by IOM, decreasing crystal sizes near growth lines result in relative enrichment of IOM and greater resistance of respective shell portions against etching. Therefore, these shell portions stand out as ridges. After the growth line, IOM is depleted, crystals are larger and the shell is more deeply etched. dog = direction of growth.

Distribution of organics across the shell of *Arctica islandica*

As shown by the sample immersed in Mutvei's solution (Fig. 1), growth lines were deeply stained by Alcian Blue while the portions between major growth lines were mottled in lighter blue colors. Notably, craters produced by laser ablation and the immediate adjacency of these spots were not stained (Fig. 1). SEM images of the etched outer shell layer of *A. islandica* revealed a cross-acicular crystal fabric between major growth lines (Fig. 3). Toward the annual growth lines, however, the size of these crystals gradually decreased and the amount of insoluble organics increased (Fig. 3). Even smaller, more etch-resistant, tightly packed crystals (irregular simple prisms) were observed at the growth lines (Fig. 3).

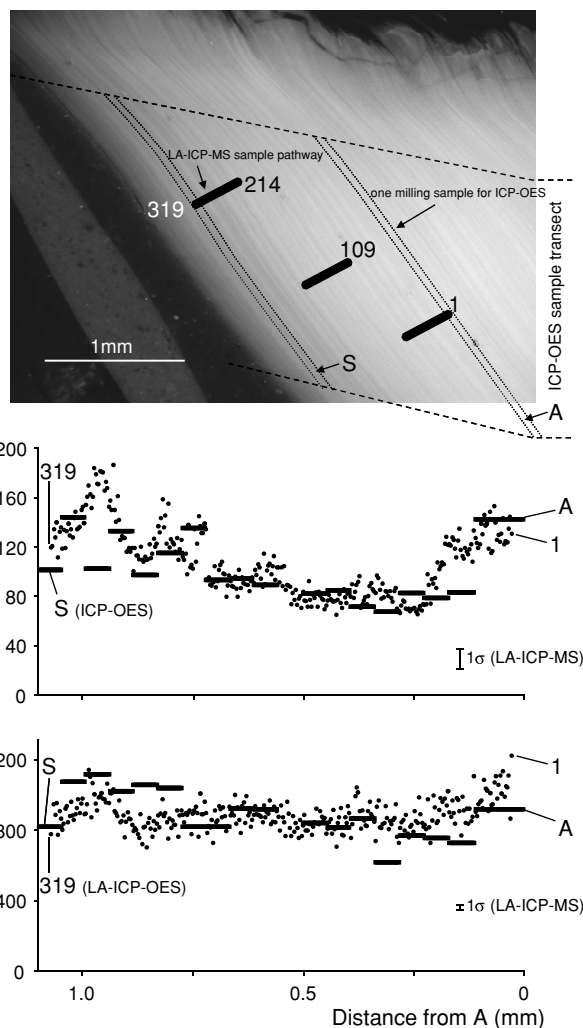


Fig. 4. Shell portion near the commissure of a more than 200 year-old specimen of *Arctica islandica* (specimen HM-Fla86-A1; Table 2) sampled by ICP-OES (samples A to S) and LA-ICP-MS (samples 1 to 319). Distinct lines are annual growth lines. LA spot size is 50 µm in diameter. Distance between LA spot centers was 3.45 µm. Mg and Sr concentrations measured by both analytical techniques were statistically indistinguishable (Wilcoxon *t*-statistics: $p > 0.05$). Error bars in standard deviation units (1σ). Error bars for ICP-OES results are smaller than size of labels.

Small-scale (LA-ICP-MS) element variation across the shell of *Arctica islandica*

Magnesium and strontium concentrations in the outer layer of *A. islandica* shells determined by LA-ICP-MS exhibited seasonal oscillations with sharp Mg excursions (Figs. 1 and 2). Highest magnesium values of 106 and 238 ppm ($\mu\text{g g}^{-1}$) and strontium values of 1387 and 1466 ppm (Figs. 1 and 2) were observed near the major growth lines ("R") of two different specimens. These values corresponded to Mg/Ca ratios of 0.49 and 1.10 mmol/mol

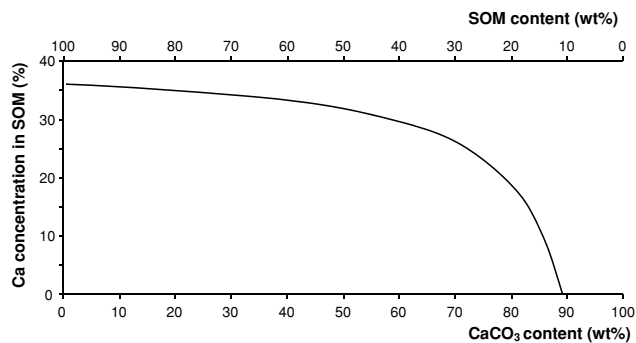


Fig. 5. Model to estimate the relative abundance of soluble organics in shells of *Arctica islandica*. The Ca content of the whole biomineral was determined by ICP-OES and equals 35.72 wt% (Table 2). This value limits the pure CaCO_3 content to 89.21 wt%. Accordingly, the minimum amount of soluble organics equals 10.33 wt% ($100 \text{ wt}\% - 0.46 \text{ wt}\% \text{ IOM} - 89.21 \text{ wt}\% \text{ CaCO}_3$). In this case, the SOM would contain no Ca. With increasing amounts of Ca in the SOM, the relative abundance of the SOM in the biomineral increases and the CaCO_3 content decreases. The hypothetical extreme is where the “biomineral” is CaCO_3 -free and consists only of organics, i.e., 0.46 wt% IOM and 99.54 wt% SOM.

and Sr/Ca ratios of 1.78 and 1.88 mmol/mol. Major growth lines (=reproduction lines; Jones, 1980) form about one month after the hottest part of summer (Fig. 1; Schöne *et al.*, 2005b). A second magnesium peak occurred at growth lines denoted as “W” for winter (Fig. 1). These lines were laid down during *ca.* January/February (Schöne *et al.*, 2005b). Lowest magnesium (45 and 55 ppm = Mg/Ca of 0.21 and 0.26 mmol/mol) and strontium (845 and 740 ppm = Sr/Ca of 1.08 and 0.95 mmol/mol; Figs. 1 and 2) levels, however, occurred in shell portions that formed during the coldest season of the year, i.e., shortly after the “W” lines. Whereas strontium data formed relatively smooth curves, the magnesium curves demonstrated a saw-toothed appearance with two to three times higher values in samples that comprise major growth lines than samples from shell portions between two consecutive lines (Figs. 1 and 2).

Element analyses of *Arctica islandica* shell by LA-ICP-MS and ICP-OES

Contemporaneously deposited shell portions analyzed with different analytical techniques revealed statistically indistinguishable results for Mg and Sr as well as Mg/Ca and Sr/Ca ratios (Wilcoxon *t*-statistics: $p > 0.05$) (Table 2; Fig. 4). According to ICP-OES analysis, the average Ca concentration in these shell portions was 35.72 wt%. This value was used as the internal standard for LA-ICP-MS.

Compound-specific chemical analyses by ICP-OES and LA-ICP-MS

Average ICP-OES-derived magnesium concentrations of the IOM (130 ppm; specimens ICE06-A1 to A5) can be up to two times as high as the whole biomineral or the soluble components (68 ppm; Table 2). However, strontium and calcium contents were much lower in the IOM compared to the biomineral (10 ppm and 0.22 wt%, respectively; Table 2). No statistical difference was found between Mg and Sr values or the Mg/Ca and Sr/Ca ratios of the IOM determined by ICP-OES and LA-ICP-MS if a Ca value of 0.22 wt% (= the Ca content in the IOM measured with ICP-OES) was used as the internal standard (Table 2).

Separation of soluble organics with large (SOM_{lp}) and small proteins plus CaCO_3 ($\text{CaCO}_3 + \text{SOM}_{\text{sp}}$) was not successful (Table 2). As demonstrated by a Ca concentration of 30.18 wt%, the SOM_{lp} component still contained large amounts of dissolved CaCO_3 . Overall, water-soluble organics (SOM_{lp} and $\text{CaCO}_3 + \text{SOM}_{\text{sp}}$) were largely within the same range of magnesium and strontium concentrations as the whole biomineral (Table 2).

Soluble organics: relative abundance and Ca concentration

The relative abundance of SOM in shells of *A. islandica* can be computed as follows. According to ICP-OES, the whole biomineral contained 35.72 wt% Ca (Table 2). This value represents the sum of the relative abundances of the three main components of the shell, CaCO_3 , IOM and SOM, and their respective Ca contents.

$$35.72 \text{ wt}\% = \frac{a}{100} \cdot A + \frac{b}{100} \cdot B + \frac{c}{100} \cdot C, \quad (1)$$

where *a*, *b* and *c* are the relative abundance in wt% of the IOM, CaCO_3 and SOM, respectively, and $a = 0.46 \text{ wt}\%$, and $c = 100 \text{ wt}\% - a - b$. *A*, *B* and *C* denote the Ca content (wt%) of the IOM, CaCO_3 and SOM, respectively, and $A = 0.22 \text{ wt}\% \text{ Ca}$ (given by ICP-OES) and $B = 40.04 \text{ wt}\% \text{ Ca}$ (stoichiometrical value for abiogenic CaCO_3). We can rewrite Eq. (1) as follows:

$$35.72 \text{ wt}\% \text{ Ca} = \frac{0.46 \text{ wt}\%}{100} \cdot 0.22 \text{ wt}\% \text{ Ca} + \frac{b}{100} \cdot 40.04 \text{ wt}\% \text{ Ca} + \frac{100 \text{ wt}\% - 0.46 \text{ wt}\% - b}{100} \cdot C \quad (2)$$

and solve Eq. (2) for *C*

$$C = \left\{ 35.72 \text{ wt\% Ca} - 0.0046 \text{ wt\%} \cdot 0.22 \text{ wt\% Ca} - \frac{b}{100} \cdot 40.04 \text{ wt\% Ca} \right\} / \frac{100 \text{ wt\%} - 0.46 \text{ wt\%} - b}{100}. \quad (3)$$

According to the graphic representation of Eq. (3) (Fig. 5), the minimum SOM (c) and maximum possible CaCO_3 content (b) of the whole biomineral is 10.33 wt% and 89.21 wt%, respectively. At this value, the SOM contains no Ca ($C = 0$ wt% Ca). With increasing Ca concentration in the SOM, the relative abundance of SOM in the biomineral increases and, correspondingly, the CaCO_3 content of the mixture decreases. The maximum possible Ca level of the SOM ($C = 35.88$ wt% Ca) is attained when the entire hypothetical “biomineral” consists only of IOM and SOM ($c = 99.54$ wt%).

DISCUSSION

Chemical composition of the insoluble organic matrix

The results of this study demonstrate that considerable amounts of magnesium in shells of *Arctica islandica* are organic-bound (IOM) rather than crystal-bound. In addition, the IOM has a different elemental composition than the inorganic carbonate phase plus soluble organics. On average, the insoluble organic matrix can contain nearly twice as much Mg as the whole biomineral or the soluble components ($\text{CaCO}_3 + \text{SOM}$), but *ca.* 99% less strontium and calcium (Table 2). Likewise, the Mg/Ca ratios of the IOM can be up to 200 times higher than the whole biomineral, and the Sr/Ca ratios two times higher (Table 2).

Similar findings have been reported for corals (e.g., Amiel *et al.*, 1973; Sinclair *et al.*, 1998; Fallon *et al.*, 1999), foraminifera (Nürnberg *et al.*, 1996), and most recently the bivalve mollusk *Corbula amurensis* (Takesue *et al.*, 2008). For example, Allison (1996) observed significantly larger amounts of magnesium in organic-rich portions of coral skeletons and suggested that these metals are complexed by proteins (Mitterer, 1978). Watanabe *et al.* (2001) conducted several different pretreatment procedures to remove the organic components and adhering metals of coral skeletons. They concluded that 40% of the total skeletal magnesium is absorbed by organic components or crystal surfaces. The amount of non-lattice-bound magnesium in coral skeletons reported by Watanabe *et al.* (2001) compares well to our findings.

Comparable studies on bivalve shells are still scarce. However, Takesue and van Geen (2004) found lower Mg levels in subfossil *Protothaca staminea* shells than in modern samples of the same species and concluded that the Mg-rich organic matrix had degraded during diagenesis (Curtis and Krinsley, 1965; Brand and Morrison, 1987). Similarly, Gillikin *et al.* (2005b) noted

lower Mg/Ca ratios in subfossil *Mercenaria* spp. analyzed with LA-ICP-MS. It is noteworthy, that none of the existing studies differentiated between insoluble and soluble organics.

Most recently, Foster *et al.* (2008) analyzed shells of *Arctica islandica* by means of Synchrotron X-ray Absorption Near Edge Spectroscopy (XANES) and concluded that Mg is not substituted into the aragonite of *A. islandica*, but is exclusively hosted by a disordered phase such as organic components or nanoparticles. According to these authors, Mg does not appear to be a useful paleoenvironmental proxy at all. However, Mg contents in shells of *A. islandica* approach those of current synchrotron methods. Most Mg levels of shells analyzed in the present study remained between 68 and 99 ppm. Therefore, the conclusions drawn by Foster *et al.* (2008) seem debatable and require further study.

The affinity of Mg for the IOM may result from the existence of organic molecules (metalloproteins, metal complexes etc.) with magnesium-binding capacities (Gómez-Ariza *et al.*, 2004; Gotliv *et al.*, 2005). Actually, Mg is one of the most abundant cofactors of metalloproteins (Dudev and Lim, 2000) and occurs at negatively charged sites of aspartic and glutamic-rich polypeptides (Dudev *et al.*, 1999). These two amino acids belong to the most common constituents of glycoproteins of the molluscan extrapallial fluid (EPF) and play an active role in promoting and modulating shell mineral growth (Sikes *et al.*, 1998; Gotliv *et al.*, 2003). Later during biomineralization, these acidic macromolecules mainly become part of the intracrystalline matrix (Addadi *et al.*, 1991) while other framework building insoluble components are mainly preserved as intercrystalline matrix. Furthermore, similar proteins sequester and remove metal ions from metabolic pathways. This is necessary because excessive amounts of such ions (mainly derived from food, Chapman *et al.*, 2003) can have adverse effects on organisms. Different metal cation detoxification systems have therefore been developed in organisms (Viarengo and Nott, 1993). A common detoxification system is based upon soluble ligands, i.e., metal-binding proteins such as metallothioneins or phosphoproteins (Margoshes and Vallee, 1957; Noel-Lambot, 1976; Marsh and Sass, 1985). These proteins may become part of the EPF.

Some proportions of Mg may merely co-occur with the IOM. During biomineralization, Mg is largely excluded from aragonite crystals and is therefore enriched in the peripheral fluids surrounding the crystals. In this case, Mg does not necessarily bind to the IOM, but may be adhesively associated with the IOM (or occur as a Mg enriched Mg–Ca– CO_3 surface coating on the carbonate crystals). However, the use of a low-concentration acid (HNO_3) in the present study to dissolve the biominerals

assured that adhesively bound Mg was removed from the IOM prior to the analyses.

*IOM and magnesium distribution across shells of *Arctica islandica**

As demonstrated by geochemical staining experiments (immersion in Mutvei's solution, Fig. 1) and SEM analyses (Fig. 3), organic components, especially the IOM, are not homogeneously distributed across the shells, but are strongly enriched near major growth lines. Mutvei's solution stained these lines dark blue indicating the presence of large amounts of organic molecules. In addition, SEM analyses revealed that significantly smaller crystals occur near such growth lines compared to other portions of the outer shell layer. Because each crystal is embedded in an organic sheet of IOM, shell portions with smaller crystals contain relatively larger amounts of intercrystalline organics. During biomineralization, these organic matrices provide the structural framework (Clark, 1980) and control the material properties of the biominerals (Mann, 1983; Simkiss and Wilbur, 1989; Crenshaw, 1990; Watabe *et al.*, 1993). Between major growth lines, however, a cross-acicular crystal fabric with larger crystal sizes prevailed, and the amount of insoluble organics in the respective shell portions was much smaller. Immersion of such shell portions in Mutvei's solution resulted in a mottled fabric consisting of large, light blue (probably intracrystalline organics) stained crystals and scanty intercrystalline organics (darker blue).

*Pitfalls of element analyses of *Arctica islandica* shells by LA-ICP-MS*

If the precise Ca concentration of the analyzed material is known, LA-ICP-MS returns trace element values that are statistically indistinguishable from those measured by ICP-OES. For example, using the observed Ca concentration of 0.22 wt% (Table 2) as an internal standard, LA-ICP-MS and ICP-OES returned similar Mg and Sr data for the IOM (Table 2). This finding also suggests that potential interferences by organics on mass 24 have only minor effects on the Mg measurements. If organic molecules would influence the data, LA-ICP-MS values for the Mg concentration would be significantly different from those measured by ICP-OES. Likewise, a direct comparison of similar shell portions analyzed by LA-ICP-MS and ICP-OES revealed statistically indistinguishable trace element concentrations (Table 2). It should be noted that the analyzed samples came from an ontogenetically old shell portion. Low calcification rates in such shell portions resulted in narrow annual increments. Each sample taken from such locations represented more than a year of shell growth precluding the analysis of seasonal variations of trace elements. Given the relatively low sampling resolution, the distribution of the IOM (and the Ca level;

here: 35.72 wt%) in such shell portions can be considered to be nearly homogeneous.

However, fast-growing youth portions of bivalve shells can be analyzed with sub-annual resolution by LA-ICP-MS. In such shell portions, the Mg concentration (and Mg/Ca ratios) near major growth lines (=larger amounts of IOM) were two- to threefold higher than in neighboring shell portions with lower IOM content (Figs. 1 and 2). A likely explanation for the overestimation of the Mg concentration of shell portions enriched in IOM is a significant Mg contribution from the larger amounts of IOM present. In most existing LA-ICP-MS studies of biogenic hard parts, the small-scale heterogeneous distribution of the IOM across the shell and its chemical composition has received little attention. Instead of determining the precise Ca concentration of each shell portion designated for element analyses by means of LA-ICP-MS, it is often standard practice to measure the Ca concentration of the entire shell and use this value as the internal standard. However, the IOM to CaCO₃ ratio across the shell is highly variable, particularly in youth portions of the shell, and shell portions containing more IOM evidently contain less CaCO₃ and, thus, have a lower Ca content. It should be noted that it is currently very difficult to determine the Ca concentration of the sample volume ablated for LA-ICP-MS, because the sample volume excited by the electron microprobe for Ca measurements is much smaller. In spots, in which the amount of IOM exceeds 0.46 wt% of the total sample weight, this can result in a significant overestimation of the Mg and Sr concentration, whereas lower than average amounts can result in an underestimation of these elements. This will be demonstrated by a hypothetical model (Fig. 6).

In this model, we use a Ca content of 35.72 wt% as internal standard value (Ca concentration given by multiple ICP-OES measurements; Table 2) for all calculations. In the two extreme cases, (a) ablation of an IOM-free shell portion and (b) coincidental ablation of a purely organic spot, the Mg and Sr concentrations will be underestimated (a) or overestimated (b), respectively. In case (b), an unchanged internal standard value that does not take into account the admixture of virtually Ca-free, but Mg- and Sr-rich IOM would result in an overestimation of the actual Mg and Sr concentrations (Mg = 134 ppm; Sr = 7 ppm) by 16,139% and 16,400%, respectively (Mg = 21,761 ppm; Sr = 1,155 ppm; Table 2). A mixing model for these two end members, 0 wt% and 100 wt% IOM, provides a means to estimate the potential error induced by different amounts of IOM in the biomineral (Fig. 6). For example, if a shell portion containing 50 wt% insoluble organics is ablated, apparent Mg and Sr values would be as high as 237 and 866 ppm, respectively. These hypothetical considerations demonstrate that a local enrichment of IOM can lead to a significant overestimation of

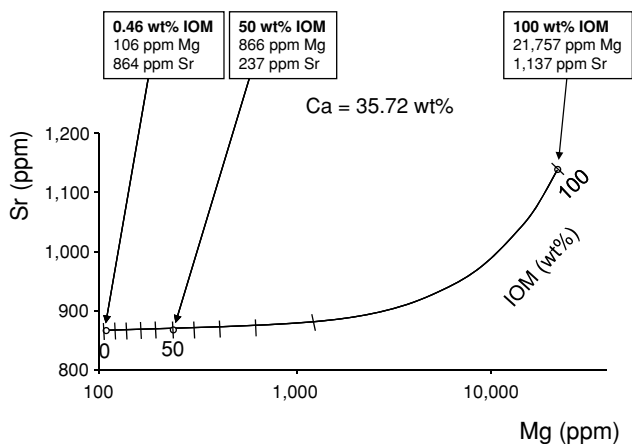


Fig. 6. Hypothetical model of the potential error of trace element chemistry induced by spatially variable amounts of IOM. Here, it is assumed that the Ca concentration of the sample spot analyzed by means of LA-ICP-MS is not known precisely and an internal standard value of 35.72 wt% Ca (given by ICP-OES analysis) is erroneously assumed. If the laser hit a shell portion without IOM, all Mg and Sr would come from the CaCO_3 + SOM fraction. However, assuming that the laser coincidentally hit a shell portion containing pure IOM, this would result in a significant overestimation of the Mg and Sr concentrations of 21,761 ppm and 1,155 ppm, respectively. A mixing model for these two end members, 0 wt% and 100 wt% IOM, provides a means to estimating the potential error induced by different amounts of IOM in the biomineral.

the Mg level of the sampled shell portion if the actual Ca concentration is not precisely determined. Precisely how the IOM concentration varies across the shell on μm - and nm -scales remains to be studied.

Trace element to calcium ratios of *Arctica islandica* shells

So far, our analyses have demonstrated that element concentrations of homogeneous shell portions and isolated IOM measured by ICP-OES and LA-ICP-MS agree well. Furthermore, the Mg/Ca and Sr/Ca ratios calculated from the respective ICP-OES and LA-ICP-MS data were statistically identical (Table 2). However, as shown in Figs. 1 and 2, high-resolution LA-ICP-MS analysis of fast-growing youth portions of the shells not only resulted in higher Mg values near major, IOM-enriched growth lines, but also in elevated Mg/Ca ratios. This is likely to be due to the different chemical composition of the IOM and the CaCO_3 + SOM components. In the model in Fig. 7, the effect of increasing amounts of IOM on the Mg/Ca and Sr/Ca ratios is simulated. If the analyzed shell portions consist of pure IOM, Mg/Ca and Sr/Ca ratios are ca. 100.44 and 1.46 mmol/mol, respectively. However, in an assumed extreme case that the analyzed shell portions consist of a 1:1 mixture (by weight) of IOM and CaCO_3

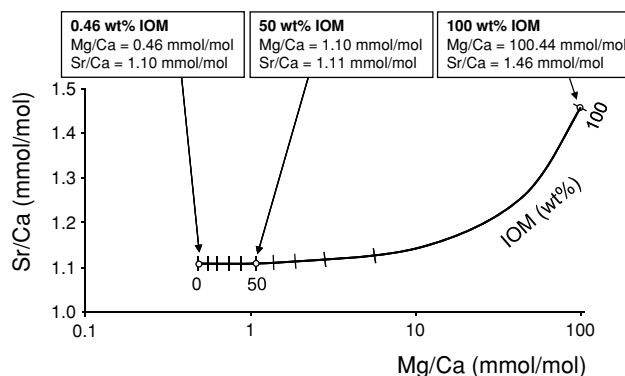


Fig. 7. Model of IOM-induced changes of the trace element to calcium ratios of a biomineral. Because of the different element chemistry of the IOM (Table 2), Mg/Ca and Sr/Ca ratios increase with increasing relative abundance of IOM in the biomineral.

+ SOM, the Mg/Ca and Sr/Ca ratios will amount to 1.10 and 1.11 mmol/mol, respectively. For the calculation, we assumed that the CaCO_3 to SOM ratio remained unchanged and that SOM was Ca-free. Therefore, the relative abundance of CaCO_3 amounts to 44.81 wt%, and the Ca concentration will be 44.81 wt% \times 40.04 wt% Ca/100 = 17.94 wt% (for calculation of the SOM abundance and Ca content in SOM see next section). For comparison, the average shell (0.46 wt% IOM) returned Mg/Ca ratios of 0.46 mol/mol and Sr/Ca ratios of 1.10 mmol/mol. This model suggests that shell portions enriched in IOM can have higher Mg/Ca and—if the IOM content is large enough—higher Sr/Ca ratios. Trace element to calcium ratios of shell portions enriched in IOM may not be useful as paleothermometers, because the relationship between temperature and Mg/Ca and Sr/Ca ratios has only been verified for CaCO_3 , but not for the IOM.

Soluble organics (SOM)

It is currently very difficult to ascertain the trace elemental composition of the soluble organics or the precise relative abundance of SOM_{ip} and SOM_{sp} in the whole biomineral. Our approach to separate the soluble organics by molecular size was not successful, because the SOM_{ip} fraction apparently still contained large amounts of dissolved CaCO_3 (Table 2). Preliminary data, however, suggest that the chemical composition of the SOM does not vary as much as the IOM from the inorganic shell fraction. Other available techniques to separate the SOM from the CaCO_3 involve cationic ion exchange resin (Albeck *et al.*, 1996). However, these methods involve non-ultrapure agents and are thus inappropriate to determine the trace element composition of the SOM.

It is noteworthy that the relative abundance of SOM in the shells of *A. islandica* was unexpectedly high in

comparison to previous reports. Kawaguchi and Watabe (1993) found only 2.6 wt% IOM + SOM in *Crassostrea virginica* shells. However, these data came from the prismatic shell layer which may contain considerably less organics than the crystal fabrics of *A. islandica*. Typically, the prismatic shell layer is only very weakly stained by Mutvei's solution indicating low amounts of organics (Schöne *et al.*, 2005a). Further studies are required to confirm the amounts of SOM in *A. islandica* shells.

Implications for geochemical analyses of bivalve shells

As demonstrated here, an indiscriminate use of analytical techniques may produce imprecise data on trace element concentrations of bivalve shells. Strontium levels of bivalve shells can be determined with sufficient precision and accuracy by both ICP-OES and LA-ICP-MS techniques. However, Mg concentrations are severely overestimated by LA-ICP-MS, because (1) the IOM is enriched in Mg and (2) the internal standard value assumed for the whole biomineral may not be appropriate to each shell portion; some shell portions such those as near major growth lines can be significantly enriched in IOM and, thus, depleted in Ca compared to the whole biomineral. Without proper sample pretreatment or mathematical modeling, high-resolution LA-ICP-MS-derived Mg concentrations cannot be compared with ICP-OES data. Potential sample pretreatment procedures can include removal of the IOM by oxidative cleaning (see Takesue and van Geen, 2004). However, some of the intracrystalline organic matrix may be insoluble as well and thus difficult to remove (e.g., by roasting; Gaffey *et al.*, 1991), without dissolving the shell (compare Watanabe *et al.*, 2001). Alternatively, the surplus of Mg contained in the IOM can be mathematically corrected for. If the average IOM content and its artifactual Mg concentration were known, its contribution to the Mg concentrations of the whole biomineral could be calculated and subtracted.

The use of trace element to calcium ratios as faithful paleothermometers, however, does not require absolute element concentrations. Even if the exact Ca-concentration of the ablated material is not known due to the heterogeneous nature of the material, Mg and Sr values will change proportionally, and Mg/Ca or Sr/Ca ratios will not be fractionated. However, existing studies (inorganic precipitation experiments) have only confirmed a temperature effect on the Mg/Ca and Sr/Ca ratios of the CaCO₃, while such effects on the IOM have never been studied. Given the different chemical composition of the IOM, shell portions enriched in IOM will not only show higher Mg, Sr and Ca concentrations, but also higher Mg/Ca and Sr/Ca ratios than the CaCO₃ + SOM fraction. This is applicable to both the ICP-OES and LA-ICP-MS techniques. However, wet analytical techniques permit the separation

of the different shell components prior to the analysis, whereas a reliable removal of the IOM from the biomineral prior to LA-ICP-MS analysis is not currently established. During LA-ICP-MS analysis the entire shell material is ablated, i.e., IOM, SOM and CaCO₃. Therefore, shell portions with higher relative IOM abundance will return elevated Mg/Ca and Sr/Ca ratios. Without removal of the IOM prior to the analysis, Mg/Ca and Sr/Ca ratios of shell portions with higher IOM content cannot be used as paleothermometers.

SUMMARY AND CONCLUSIONS

The insoluble organic matrix of *Arctica islandica* shells is significantly enriched in magnesium and depleted in strontium and calcium in comparison with the inorganic carbonate fraction and soluble organics. Although the average relative abundance of the IOM barely exceeds 0.5% by weight, its chemical composition can significantly increase estimates of the Mg content of the shell if measured by LA-ICP-MS. This overestimation is related to the heterogeneous distribution (on μm - and nm-scales) of the IOM across the shells. It is currently still very difficult to determine the Ca concentration (used as internal standard) of the exact same volume that is ablated for LA-ICP-MS. Thus, Mg concentrations of shell portions with higher than average IOM content, such as major growth lines, are prone to be overestimated by LA-ICP-MS. Removal of the IOM prior to the chemical analysis or mathematical correction for the IOM-derived magnesium concentrations is strongly advised.

For paleoenvironmental reconstructions, however, it is necessary to determine the element to calcium ratios of the CaCO₃ component. Existing studies (inorganic precipitation experiments) have only demonstrated a temperature effect on the Mg/Ca and Sr/Ca ratios of the CaCO₃, but not of the IOM. Without removal of the IOM prior to the analysis, Mg/Ca and Sr/Ca ratios of shell portions enriched in IOM cannot be used as paleothermometers. Because it is currently not possible to remove the IOM prior to LA-ICP-MS analysis, we recommend the use of wet chemical techniques such as ICP-OES at the expense of lower sampling resolution.

The trace metal chemistry of soluble organics in biominerals still requires further study. Our preliminary approach only focused on molecular sizes of the SOM above and below 3kDa and separation of these two phases from dissolved CaCO₃ was incomplete. Chromatographic separation methods (Mazon *et al.*, 1990) may help to determine the Mg content in different molecule size classes as well as the relative abundance of each different SOM class in the whole biomineral. Such data may help to define mathematical models that can eliminate the potential overestimation of Mg by means of LA-ICP-MS.

Similar influences of organic proteins on chemical estimates are also expected for other metals that are often bound to organic molecules such as Co, Fe, Mn, Mo, Ni, Se and Zn (e.g., Lochmüller *et al.*, 1974; Gómez-Ariza *et al.*, 2004). Further studies should therefore isolate different organic components of the shell and determine their amount and chemical composition by wet chemical analyses.

Acknowledgments—*Arctica islandica* specimens DBG13.2-A1 and WH241-597-A1 were provided by Ingrid Kröncke (Marine Research Division, Senckenberg Institute, Wilhelmshaven, Germany), and specimen HM-Fla86-A1 by Harry Mutvei (Museum of Natural History, Stockholm, Sweden). Comments made by Elizabeth Nunn (University of Mainz) are kindly acknowledged. Two anonymous reviewers significantly helped to improve a former version of this manuscript; we are very grateful for their help. We also thank Tsuyoshi Watanabe for handling and communicating this manuscript. This study has been made possible by a German Research Foundation (DFG) grant (to Schöne: SCHO 793/4). A PhD scholarship to Zhang by the German Academic Exchange Service (DAAD) is kindly acknowledged. This is Geocycles publication number 619.

REFERENCES

- Addadi, L., Berman, A. and Weiner, S. (1991) Intracrystalline proteins from a sea urchin and a mollusk: A comparison. *Mechanisms and Phylogeny of Mineralization in Biological Systems* (Suga, S. and Nakahara, H., eds.), 29–33, Springer.
- Albeck, S., Weiner, S. and Addadi, L. (1996) Polysaccharides of intercrystalline glycoproteins modulate calcite growth *in vitro*. *Chem. Eur. J.* **2**, 278–284.
- Allison, N. (1996) Geochemical anomalies in coral skeletons and their possible implications for palaeoenvironmental analyses. *Mar. Chem.* **55**, 367–379.
- Amiel, A. J., Miller, D. S. and Friedman, G. M. (1973) Incorporation of uranium in modern corals. *Sedimentology* **20**, 523–528.
- Beck, J. W., Edwards, R. L., Ito, E., Taylor, F. W., Recy, J., Rougerie, F., Joannot, P. and Henin, C. (1992) Sea-surface temperature from coral skeletal strontium/calcium ratios. *Science* **257**, 644–647.
- Bellotto, V. R. and Miekeley, N. (2007) Trace metals in mussel shells and corresponding soft tissue samples: a validation experiment for the use of *Perna perna* shells in pollution monitoring. *Anal. Bioanal. Chem.* **389**, 769–776.
- Brand, U. and Morrison, J. O. (1987) Biogeochemistry of fossil marine invertebrates. *Geosci. Can.* **14**, 85–107.
- Bustamante, P. and Miramand, P. (2004) Interspecific and geographical variations of trace element concentrations in Pectinidae from European waters. *Chemosphere* **57**, 1355–1362.
- Cardinal, D., Hamelin, B., Bard, E. and Pätzold, J. (2001) Sr/Ca, U/Ca and $\delta^{18}\text{O}$ records in recent massive corals from Bermuda: Relationships with sea surface temperature. *Chem. Geol.* **176**, 213–233.
- Chapman, P. M., Wang, F., Janssen, C. R., Goulet, R. R. and Kamunde, C. N. (2003) Conducting ecological risk assessments of inorganic metals and metalloids: current status. *Human Ecol. Risk Assessm.* **9**, 641–697.
- Clark, G. R., II. (1980) Techniques for observing the organic matrix of molluscan shells. *Skeletal Growth of Aquatic Organisms* (Rhoads, D. C. and Lutz, R. A., eds.), 607–612, Plenum Publ. Co.
- Corrége, T. (1993) Preliminary results of paleotemperature reconstruction using the magnesium to calcium ratio of deep-sea ostracod shells from the Late Quaternary of Site 822, Leg 133 (western Coral Sea). *Proc. Ocean Drilling Prog. Sci Res.* **133**, 175–180.
- Cowan, J. A. (1991) Metallobiochemistry of magnesium. Coordination complexes with biological substrates: site specificity, kinetics and thermodynamics of binding, and implications for activity. *Inorg. Chem.* **30**, 2740–2747.
- Crenshaw, M. A. (1990) Biomineralization mechanisms. *Skeletal Biomineralization: Patterns, Processes and Evolutionary Trends, Volume 1* (Carter, J. G., ed.), 1–9, Van Nostrand Reinhold.
- Curtis, C. D. and Krinsley, D. (1965) The detection of minor diagenetic alteration in shell material. *Geochim. Cosmochim. Acta* **29**, 71–84.
- Dauphin, Y., Cuif, J. P., Doucet, J., Salomé, M., Susini, J. and Williams, C. T. (2003) *In situ* mapping of growth lines in the calcitic prismatic layers of mollusc shells using X-ray absorption near-edge structure (XANES) spectroscopy at the sulphur K-edge. *Mar. Biol.* **142**, 299–304.
- de Villiers, S., Nelson, B. K. and Chivas, A. R. (1995) Biological controls on coral Sr/Ca and $\delta^{18}\text{O}$ reconstructions of sea-surface temperatures. *Science* **269**, 1247–1249.
- de Villiers, S., Greaves, M. and Elderfield, H. (2002) An intensity ratio calibration method for the accurate determination of Mg/Ca and Sr/Ca of marine carbonates by ICP-AES. *Geochem., Geophys., Geosyst.* **3**, 1001, doi:10.1029/2001GC000169.
- Dodd, J. R. (1965) Environmental control of strontium and magnesium in *Mytilus*. *Geochim. Cosmochim. Acta* **29**, 385–398.
- Dodd, J. R. (1967) Magnesium and strontium in calcareous skeletons: a review. *J. Paleontol.* **41**, 1313–1329.
- Dudev, T. and Lim, C. (2000) Metal binding in proteins: The importance of dielectric medium effects. *J. Phys. Chem. B* **104**, 3692–3694.
- Dudev, T., Cowan, J. and Lim, C. (1999) Competitive binding in magnesium coordination chemistry: water versus ligands of biological interest. *J. Am. Chem. Soc.* **121**, 7665–7673.
- England, J., Cusack, M. and Lee, M. R. (2007) Magnesium and sulphur in the calcite shells of two brachiopods, *Terebratulina retusa* and *Novocrania anomala*. *Lethaia* **40**, 2–10.
- Fallon, S. J., McCulloch, M. T., van Woesik, R. and Sinclair, D. J. (1999) Corals at their latitudinal limits: laser ablation trace element systematics in *Porites* from Shirigai Bay, Japan. *Earth Planet. Sci. Lett.* **172**, 221–238.
- Foster, L. C., Finch, A. A., Allison, N., Andersson, C. and Clarke, L. J. (2008) Mg in aragonitic bivalve shells: Seasonal variations and mode of incorporation in *Arctica*

- islandica*. *Chem. Geol.* **254**, 113–119.
- Freitas, P., Clarke, L. J., Kennedy, H., Richardson, C. and Abrantes, F. (2005) Mg/Ca, Sr/Ca, and stable-isotope ($\delta^{18}\text{O}$ and $\delta^{13}\text{C}$) ratio profiles from the fan mussel *Pinna nobilis*: Seasonal records and temperature relationships. *Geochem., Geophys., Geosyst.* **6**, doi:10.1029/2004GC000872.
- Freitas, P. S., Clarke, L. J., Kennedy, H. A. and Richardson, C. A. (2008) Inter- and intra-specimen variability masks reliable temperature control on shell Mg/Ca ratios in laboratory- and field-cultured *Mytilus edulis* and *Pecten maximus* (bivalvia). *Biogeosciences* **5**, 1245–1258.
- Gaetani, G. A. and Cohen, A. L. (2006) Element partitioning during precipitation of aragonite from seawater: A framework for understanding paleoproxies. *Geochim. Cosmochim. Acta* **70**, 4617–4634.
- Gaffey, S. J., Kolak, J. J. and Bronnimann, C. E. (1991) Effects of drying, heating, annealing, and roasting of carbonate skeletal material, with geochemical and diagenetic implications. *Geochim. Cosmochim. Acta* **55**, 1627–1640.
- Gillikin, D. P., Lorrain, A., Navez, J., Taylor, J. W., André, L., Keppens, E., Baeyens, W. and Dehairs, F. (2005a) Strong biological controls on Sr/Ca ratios in aragonitic marine bivalve shells. *Geochem., Geophys., Geosyst.* **6**, doi:10.1029/2004GC000874.
- Gillikin, D. P., Dehairs, F., Baeyens, W., Navez, J., Lorrain, A. and André, J. (2005b) Inter- and intra-annual variations of Pb/Ca ratios in clam shells (*Mercenaria mercenaria*): a record of anthropogenic lead pollution? *Mar. Pollut. Bull.* **50**, 1530–1540.
- Gómez-Ariza, J. L., García-Barrera, T., Lorenzo, F., Bernal, V., Villegas, M. J. and Oliveira, V. (2004) Use of mass spectrometry techniques for the characterization of metal bound to proteins (metalloomics) in biological systems. *Anal. Chim. Acta* **524**, 15–22.
- Gotliv, B.-A., Addadi, L. and Weiner, S. (2003) Mollusk shell acidic proteins: in search of individual functions. *Chembiochem* **4**, 522–529.
- Gotliv, B.-A., Kessler, N., Sumarel, J. L., Morse, D. E., Tuross, N., Addadi, L. and Weiner, S. (2005) Asprich: a novel aspartic acid-rich protein family from the prismatic shell matrix of the bivalve *Atrina rigida*. *Chembiochem* **6**, 304–314.
- Jacob, D. E. (2006) High sensitivity analysis of trace element poor geological reference glasses by laser-ablation inductively coupled plasma mass spectrometry (LA-ICP-MS). *Geostand. Geoanalyt. Res.* **30**, 221–235.
- Jacob, D. E., Soldati, A. L., Wirth, R., Huth, J., Wehrmeister, U. and Hofmeister, W. (2008) Nanostructure, chemical composition and mechanisms of bivalve shell growth. *Geochim. Cosmochim. Acta*, **72**, 5401–5415.
- Jones, D. S. (1980) Annual cycle of shell growth increment formation in two continental shelf bivalves and its paleoecological significance. *Paleobiol.* **6**, 331–340.
- Katz, A. (1973) The interaction of magnesium with calcite during crystal growth at 25–90°C and one atmosphere. *Geochim. Cosmochim. Acta* **37**, 1563–1586.
- Kawaguchi, T. and Watabe, N. (1993) The organic matrices of the shell of the American oyster *Crassostrea virginica* Gmelin. *J. Exp. Mar. Biol. Ecol.* **170**, 11–28.
- Kinsman, D. J. J. and Holland, H. D. (1969) The coprecipitation of cations with CaCO_3 . IV. The coprecipitation of Sr^{2+} with aragonite between 16° and 96°C. *Geochim. Cosmochim. Acta* **33**, 1–17.
- Lazareth, C. E., Guzman, N., Poitrasson, F., Candaudap, L. and Ortlieb, L. (2007) Nyctemeral variations of magnesium intake in the calcitic layer of a Chilean mollusk shell (*Concholepas concholepas*, Gastropoda). *Geochim. Cosmochim. Acta* **71**, 5369–5383.
- Levi-Kalisman, Y., Falini, G., Addadi, L. and Weiner, S. (2001) Structure of the nacreous organic matrix of a bivalve mollusk shell examined in the hydrated state using cryo-TEM. *J. Struct. Biol.* **135**, 8–17.
- Lochmüller, C. H., Galbraith, J., Walter, R. L. and Willis, R. E. (1974) Metal-ion distribution in metalloproteins by proton-induced X-ray emission analysis. *Analyt. Biochem.* **57**, 618–622.
- Lorenz, R. B. and Bender, M. L. (1977) Physiological exclusion of magnesium from *Mytilus edulis* calcite. *Nature* **269**, 793–794.
- Lorrain, A., Gillikin, D. P., Paulet, Y.-M., Chauvaud, L., Le Mercier, A., Navez, J. and André, L. (2005) Strong kinetic effects on Sr/Ca ratios in the calcitic bivalve *Pecten maximus*. *Geology* **33**, 965–968.
- Lowenstam, H. A. (1961) Mineralogy, $\text{O}^{18}/\text{O}^{16}$ ratios, and strontium and magnesium contents of Recent and fossil brachiopods and their bearing on the history of the oceans. *J. Geol.* **69**, 241–260.
- Lowenstam, H. A. (1981) Minerals formed by organisms. *Science* **211**, 1126–1131.
- Mann, S. (1983) Mineralization in biological systems. *Struct. Bond.* **54**, 125–174.
- Margoshes, M. and Vallee, B. L. (1957) A cadmium protein from equine kidney cortex. *J. Am. Chem. Soc.* **79**, 4813–4814.
- Marsh, M. E. and Sass, R. L. (1985) Distribution and characterization of mineral-binding phosphoprotein particles in bivalvia. *J. Exp. Zool.* **234**, 237–242.
- Mazon, A. Z., Storms, S. D. and Jenkins, K. D. (1990) Metalloprotein separation and analysis by directly coupled size exclusion high-performance liquid chromatography inductively coupled plasma mass spectrometry. *Analyt. Biochem.* **186**, 187–201.
- Mitsuguchi, T., Matsumoto, E., Abe, O., Uchida, T. and Isdale, P. J. (1996) Mg/Ca thermometry in coral skeletons. *Science* **274**, 961–962.
- Mitterer, R. M. (1978) Amino acid composition and metal binding capability of the skeletal protein of corals. *Bull. Mar. Sci.* **28**, 173–180.
- Mucci, A. (1987) Influence of temperature on the composition of magnesian calcite overgrowths precipitated from seawater. *Geochim. Cosmochim. Acta* **51**, 1977–1984.
- Noel-Lambot, F. (1976) Distribution of cadmium, zinc and copper in the mussel *Mytilus edulis*. Existence of cadmium-binding proteins similar to metallothioneins. *Experientia* **32**, 324–326.
- Nürnberg, D., Bijma, J. and Hemleben, C. (1996) Assessing the reliability of magnesium in foraminiferal calcite as a proxy for water mass temperatures. *Geochim. Cosmochim.*

- Acta* **60**, 803–814.
- Palacios, R., Orensanz, J. M. and Armstrong, D. A. (1994) Seasonal and lifelong variation of Sr/Ca ratio in shells of *Mya arenaria* from Grays Harbor (Washington)—An ancillary criterion in demographic studies. *Estuar., Coast. Shelf Sci.* **39**, 313–327.
- Pearce, N. J. G., Perkins, W. T., Westgate, J. A., Gorton, M. P., Jackson, S. E., Neal, C. R. and Chenery, S. P. (1997) A compilation of new and published major and trace element data for NIST SRM 610 and NIST SRM 612 glass reference materials. *Geostand. Newsl.* **21**, 115–144.
- Pilkey, O. H. and Hower, J. (1960) The effect of environment on the concentration of skeletal magnesium and strontium in Dendraster. *J. Geol.* **68**, 203–216.
- Pokroy, B., Fitch, A. N., Lee, P. L., Quintana, J. P., Caspi, E. N. and Zolotoyabko, E. (2006) Anisotropic lattice distortions in the mollusk-made aragonite: a widespread phenomenon. *J. Struct. Biol.* **153**, 145–150.
- Rosenheim, B., Swart, P. K. and Thorrold, S. R. (2005) Minor and trace elements in sclerosponge *Ceratoporella nicholsoni*: Biogenic aragonite near the inorganic endmember? *Palaeogeogr., Palaeoclimatol. Palaeoecol.* **228**, 109–129.
- Schöne, B. R., Dunca, E., Fiebig, J. and Pfeiffer, M. (2005a). Mutvei's solution: an ideal agent for resolving microgrowth structures of biogenic carbonates. *Palaeogeogr., Palaeoclimatol. Palaeoecol.* **228**, 149–166.
- Schöne, B. R., Pfeiffer, M., Pohlmann, T. and Siegismund, F. (2005b) A seasonally resolved bottom water temperature record for the period of AD 1866–2002 based on shells of *Arctica islandica* (Mollusca, North Sea). *Int. J. Climatol.* **25**, 947–962.
- Schrag, D. P. (1999) Rapid analysis of high-precision Sr/Ca ratios in corals and other marine carbonates. *Paleoceanog.* **14**, 97–102.
- Sikes, C. S., Wheeler, A. P., Wierzbicki, A., Dillman, R. M. and de Luca, L. (1998) Oyster shell protein and atomic force microscopy of oyster shell folia. *Biol. Bull.* **194**, 304–316.
- Simkiss, K. and Wilbur, K. M. (1989) *Biomineralization*. *Cell Biology and Mineral Deposition*. Academic Press, San Diego, 337 pp.
- Sinclair, D., Kinsley, L. P. J. and McCulloch, M. T. (1998) High resolution analysis of trace elements in corals by laser ablation ICP-MS. *Geochim. Cosmochim. Acta* **62**, 1889–1901.
- Smith, S. V. (1979) Strontium–calcium thermometry in coral skeletons. *Science* **204**, 404–407.
- Sudo, S., Fujikawa, T., Nagakura, T., Ohkubo, T., Sakaguchi, K., Tanaka, M., Nakashima, K. and Takahashi, T. (1997) Structures of mollusc shell framework proteins. *Nature* **387**, 563–564.
- Swan, E. F. (1956) The meaning of strontium–calcium ratios. *Deep-Sea Res.* **4**, 71.
- Takesue, R. K. and van Geen, A. (2004) Mg/Ca, Sr/Ca, and stable isotopes in modern and Holocene *Protothaca staminea* shells from a northern California coastal upwelling region. *Geochim. Cosmochim. Acta* **68**, 3845–3861.
- Takesue, R. K., Bacon, C. R. and Thompson, J. K. (2008) Influences of organic matter and calcification rate on trace elements in aragonitic estuarine bivalve shells. *Geochim. Cosmochim. Acta* **72**, 5431–5445.
- Toland, H., Perkins, B., Pearce, N., Keenan, F. and Leng, M. J. (2000) A study of sclerochronology by laser ablation ICP-MS. *J. Analyt. Atoms. Spectrom.* **15**, 1143–1148.
- Veis, A. (2003) Mineralization in organic matrix frameworks. *Rev. Mineral. Geochem.* **54**, 249–289.
- Viarengo, A. and Nott, J. A. (1993) Mechanisms of heavy metal cation homeostasis in marine invertebrates. *Comp. Biochem. Physiol. C* **104**, 355–372.
- Watabe, N., Kingsley, R. J. and Kawaguchi, T. (1993) Functions of organic matrices in some invertebrate calcifying systems. *Structure, Formation and Evolution of Fossil Hard Tissues* (Kobayashi, I., Mutvei, H. and Sahni, A., eds.), 3–11, Tokai Univ. Press, Japan.
- Watanabe, T., Minagawa, M., Oba, T. and Winter, A. (2001) Pretreatment of coral aragonite for Mg and Sr analysis: Implications for coral thermometers. *Geochem. J.* **35**, 265–269.