

MOUSE EMBRYONIC STEM CELLS EXPRESS FUNCTIONAL TOLL LIKE  
RECEPTOR 2

Tammi M. Taylor

Submitted to the faculty of the University Graduate School  
in partial fulfillment of the requirements  
for the degree  
Doctor of Philosophy  
in the Department of Microbiology and Immunology  
Indiana University

February, 2010

Accepted by the Faculty of Indiana University, in partial fulfillment of the requirements for the degree of Doctor of Philosophy.

---

Hal E. Broxmeyer, PhD Chair

Doctoral Committee

---

Janice S. Blum, PhD

---

Alexander L. Dent, PhD

December 11, 2009

---

Harikrishna Nakshatri, PhD

---

Mervin C. Yoder, MD

## DEDICATION

I would like to dedicate this to my father Emmitt Monroe Taylor, my uncle James Ivory, and friend L.C. Tennin III. I know you are the angels watching over me each day.

## ACKNOWLEDGEMENTS

I would like to first and foremost thank my mentor Dr. Hal E. Broxmeyer, who has supported me since I started here the summer of 2003 as a Master's student in the Bridges to Doctorate Program. Without your support and belief that this program is fundamental to helping underrepresented minorities gain the opportunity to acquire a higher education in the sciences I would not be where I am today. I would like to thank you for your guidance, support, and patience with me while working in your laboratory. I will always remember your advice, guidance, and unique ways of mentoring. I have been honored to work under your guidance and thank you for letting me do a project that truly interested me.

I would also like to thank other members of my committee. Drs. Janice S. Blum, Alexander L. Dent, Harikrinshna Nakshatri, and Mervin C. Yoder for all of your guidance, technical advice, support, and encouragement.

I would like to give a special thanks and appreciation to my current and past lab members for overall team support especially Dr. Young-June Kim, Dr. Hee-Don Chae, Dr. Sunanda Basu, Dr. Tim Campbell, and Xuan Ou for helping me decide which avenues to take with my project, proofreading of manuscripts, and experimental advice. I would also like to thank past members Dr. Wen Tao and Dr. Evelyn Guo for teaching me all the techniques that I learned in the lab and for their guidance and friendship. Personal thanks goes to all current labmates in Dr. Broxmeyer and Dr. Pelus lab: Scott Cooper, Charlie Mantel, John Kinzfohl, Sara Rohrabough, Xuan Ou, HeeDon Chae, Dr. Ying Liu,

Guo Hangoc, Dr. Pratibha Singh, John Hoggatt, and Pamela Ruffin for your friendships and support.

Other faculty in the department for support and guidance include Dr. Janice S. Blum who has been a friend, mentor, and a colleague. I appreciate all of your helpful advice and support throughout this process. I would like to thank the Derbigny lab, Kristen Hosey, Phatia Wells, Kathryn Tomey, and Dr. Wilbert Derbigny. You taught me a lot and I truly appreciate you taking the time out to show me techniques, and for being friends and colleagues throughout this process. Thank you to Drs. Xin Yuan Fu, Randy Brutkiewicz, Paul Ardayfio, Ann Kimble-Hill, and Akira Moh for all of your positive energy, words of encouragement, advice, and support. Also thank you to the late Dr. Richard Haak who was very supportive of me and helpful in teaching me how to read scientific journals while taking my classes and telling me the importance of interpreting and understanding data, and proofreading my grant applications.

I would thank current and past members of the former Walther Oncology Center and Microbiology and Immunology Department, especially Cindy Booth, Audry Carson, Trisha Clark, April Maines, Janis Stringer, and Sandra Wilson. You all were so valuable to me and thanks for your administrative help and advocacy. I would also like to thank my Bridges/IUSM coordinator Dr. Joseph Cameron. Thanks for recommending me for this program and your words of wisdom, encouragement, and continued support. Thanks also to other students Tabitha Hardy, Jeremy Lott, Phatia Wells, Pamela Ruffin, Kristen Hosey, Tanya Robinson, Carla Mangum, and Tamika Collins for your friendship. You

taught me a lot and also motivated and inspired me and I wish you all well and much success.

Thanks to my friends Tamara Buckner, LaTesia Johnson, Tracy Morris, and Crystal Lane for their love and support throughout this process. Finally, my most heartfelt thanks goes to my mother, Victoria Taylor, my sisters Tracey and Tina Taylor, my brothers Emmitt and Erwin Taylor, my Uncle Vernon Ivory, Aunt Tina Conner, cousin Felicia Casey, Angel Byrd, Uncle Nod Ivory, and Richard Smith for their unconditional love, support, motivational speeches, constant praying, monies, visits, and encouragement, throughout my graduate training. Lastly, thanks God for your unending love, favor, and support, which have helped me tremendously during this time.

## ABSTRACT

Tammi M. Taylor

### MOUSE EMBRYONIC STEM CELLS EXPRESS FUNCTIONAL TOLL LIKE RECEPTOR 2

Embryonic stem cells (ESCs) are unique in that they have potential to give rise to every cell type of the body. Little is known about stimuli that promote mouse (m)ESC differentiation and proliferation. Therefore the purpose of this study was to determine the role of Toll Like Receptor (TLR) ligands in mESCs proliferation, survival, and differentiation in the presence of Leukemia Inhibitory Factor (LIF). We hypothesized that TLRs are expressed and functional, and when activated by their ligand will induce survival, proliferation, and prevent differentiation. In this study, mESC line E14 was used to determine the expression of TLRs at the mRNA level and three mESC lines, R1, CGR8, and E14, were used to determine cell surface protein levels. We found expression of TLRs 1, 2, 3, 5, and 6 at the mRNA, level but no expression of TLRs 4, 7, 8 and 9 in the E14 mESC line. We confirmed the presence of TLR-2 but not of TLR-4, protein on the cell surface using flow cytometric analysis for all three cell lines. We focused our studies mainly on TLR-2 using the E14 cell line. Pam<sub>3</sub>Cys, is a synthetic triacyl lipoprotein and a TLR-2 ligand, which induced a significant increase in mESC proliferation on Days 3, 4, and 5 and enhanced survival of mESC in a dose dependent manner in the context of delayed addition of serum. All the latter experiments were

performed in triplicate and student T-test was performed to establish significant differences. Next, we demonstrated functionality of TLR-2 via the MyD88/IKK pathway, where MyD88 was expressed and IKK $\alpha/\beta$  phosphorylation was enhanced. This was associated with increased NF- $\kappa$ B nuclear translocation upon activation by Pam<sub>3</sub>Cys. Finally, we showed that there were no changes in expression of mESCs markers Oct-4, KLF-4, Sox-2, and SSEA-1, thus illustrating that the mESCs may have remained in a pluripotent state after activation with the TLR-2 ligand in the presence of LIF. These results demonstrate that mESCs can respond to microbial products, such as Pam<sub>3</sub>Cys, and can induce proliferation and survival of the mESCs. This finding expands the role of TLRs and has some implications in understanding embryonic stem cell biology.

Hal E. Broxmeyer, PhD, Chair



## TABLE OF CONTENTS

|   |      |
|---|------|
| LIST OF TABLES .....  | xiii |
| LIST OF FIGURES .....   | xiv  |
| ABBREVIATIONS .....   | xvii |
| INTRODUCTION .....  | 1    |
| Embryonic Stem Cells  |      |
| Leukemia Inhibitory Factor  |      |
| Self-Renewal Markers  |      |
| Toll Like Receptor Pathway  |      |
| Nuclear Factor Kappa light polypeptide gene marker in B cells   |      |
| Cytokines: IL-6, TNF- $\alpha$  |      |
| AIMS .....  | 20   |
| MATERIALS AND METHODS .....   | 21   |
| Part I .....  | 21   |
| Cell Cultures   |      |
| Primers   |      |
| RNA extraction  |      |
| DNase treatment   |      |
| RT-PCR  |      |
| Primary antibodies and TLR Ligands  |      |
| Flow Cytometric Analysis for TLR-2 and TLR-4  |      |
| Flow Cytometry Analysis for Oct-4, SSEA-1, Sox-2 and KLF-4  |      |
| Western Blot pIKK, Total IKK, and MyD88   |      |
| Enzyme Linked Immunoabsorbant Assay for Protein (ELISA)   |      |
| qRT-PCR   |      |
| Proliferation Assay   |      |
| Survival Assay for ES cells in the presence of LIF  |      |
| Apoptosis Assay   |      |
| Part II .....   | 32   |
| Day 4 and Day 6 EBs in Suspension   |      |
| Flow Cytometry of Day 4 and Day 6 EBs   |      |
| Western Blot of Oct-4, p-MEK, and Total MEK   |      |
| RESULTS .....   | 34   |
| Part I.....   | 34   |
| Mouse ESCs Express Functional TLR   |      |
| TLR2 is expressed at the message level and on the surface of mES cells  |      |
| Treatment of mES cells with TLR2 ligand Pam3Cys increase in NF- $\kappa$ B nuclear translocation                      |      |
| TLR-2 ligand Pam3Cys enhances E14 mES cell Proliferation  |      |
| Cytokine and chemokine expression levels upon stimulation with TLR-2, mESCs remained in a non-differentiated state in |      |

the presence of TLR-2 activation in the presence of LIF  
Pam3Cys enhances and LPS decreases mES cell survival  
upon delayed addition of serum

|   |     |
|---|-----|
| Part II .....   | 83  |
| TLR-2 and TLR-4 are expressed in Embryoid Bodies  |     |
| In the absence of LIF, TLR-2 activation caused an increase<br>in expression of Oct-4 and Sox 2 but not KLF-4 and SSEA-1                             |     |
| Oct-4 levels, as assessed by Western blot, were maintained and<br>a decrease in p-ERK in Day 6 EBs compared to EBs not treated<br>with TLR-2 ligand |     |
| DISCUSSION .....  | 100 |
| FUTURE DIRECTIONS .....   | 109 |
| REFERENCES .....  | 111 |
| CURRICULUM VITAE  |     |

## LIST OF TABLES

### MATERIALS AND METHODS

|   |    |
|---|----|
| Table 1. TLR Primers used for RT-PCR .....  | 22 |
| Table 2. TLR Primers used for qRT-PCR ..... | 29 |

### RESULTS

|   |    |
|---|----|
| Table 3. TLR 1-9 mRNA expression in mouse cell line .....                             | 38 |
| Table 4. Other Cytokines, Chemokines and Growth Factors Assessed<br>by ELISA .....    | 68 |
| Table 5. Effects of TLR ligands on the capacity of E14 cells to make<br>protein ..... | 69 |

## LIST OF FIGURES

### INTRODUCTION

|   |    |
|---|----|
| Figure 1. Stem Cell Hierarchy .....                         | 3  |
| Figure 2. LIF/STAT3 Paradigm for ES cell Self Renewal ..... | 6  |
| Figure 3. Toll Like Receptor Pathways .....                 | 11 |
| Figure 4. Toll Like Receptor 2 Pathway .....                | 13 |

### RESULTS

|   |    |
|---|----|
| Figure 5. Murine Embryonic Stem Cells Express mRNA for TLRs 1, 2, 3, 5, and 6 Obtained From Wildtype, E14 C57/B6 Cell Line .....                                | 36 |
| Figure 6. Expression of TLR-2, And TLR-4 was Analyzed on the Surface of E14 mESCs .....   | 39 |
| Figure 7. Expression of TLR-2, And TLR-4 was Analyzed on the Surface of R1 mESCs .....  | 41 |
| Figure 8. Expression of TLR-2, And TLR-4 was Analyzed on the Surface of CGR8 mESCs .....  | 43 |
| Figure 9. Pam3cys induce NF- $\kappa$ B nuclear translocation in mouse embryonic stem cells.....  | 48 |
| Figure 10. MyD88 is constitutively expressed in mESCs in the with and without TLR2 ligand activation. ....  | 50 |
| Figure 11. TLR2- activation in mESC caused phospho-IKK- $\alpha/\beta$ at 15 and 30 minutes .....   | 52 |
| Figure 12. Pam3Cys induces ES cell proliferation in mESCs on Day 3, 4, and 5 in the presence of LIF and inhibition with T2.5, TLR-2 neutralizing antibody ..... | 54 |
| Figure 13. mESCs do not secrete various cytokines and chemokines following stimulation with toll like receptor (TLR) ligands .....                              | 59 |

|  |    |
|--|----|
| Figure 14. qRT-PCR for IL-6 TNF- $\alpha$ , and IFN- $\gamma$ at 12 and 24 hrs after TLR2 and TLR4 ligand stimulation and BCL-2 protein expression. .... | 63 |
| Figure 15. Expression of stem cell marker SSEA-1 after TLR-2 and TLR-4 ligand stimulation in wild-type E14 mESCs in the presence of LIF .....            | 72 |
| Figure 16. Expression of stem cell markers Oct 3/4 after TLR-2 and TLR-4 ligand stimulation in wild-type E14 mESCs in the presence of LIF. ....          | 74 |
| Figure 17. Expression of stem cell marker KLF-4 after TLR-2 and TLR-4 ligand stimulation in wild-type E14 mESCs in the presence of LIF .....             | 76 |
| Figure 18. Expression of stem cell marker Sox 2 after TLR-2 and TLR-4 ligand stimulation for in wild-type E14 mESCs in the presence of LIF .....         | 78 |
| Figure 19. Influence of TLR-2 on survival of ESC colony formation subjected to delayed addition of serum .....   | 80 |
| Figure 20. TLR2 is expressed in Day 6 EBs .....  | 85 |
| Figure 21. TLR 4 is expressed in Day 4 and Day 6 EBs .....   | 87 |
| Figure 22. Flow analysis of Sox2 expression for Day 4 and Day 6 EBs in the presence of TLR2 ligand but in the absence of LIF .....                       | 89 |
| Figure 23. Flow analysis of SSEA-1 expression for Day 4 and Day 6 EBs in the presence of TLR2 ligand but in the absence of LIF .....                     | 91 |
| Figure 24. Flow analysis of KLF-4 expression for Day 4 and Day 6 EBs in the presence of TLR2 ligand but in the absence of LIF .....                      | 93 |
| Figure 25. Flow analysis of Oct-4 expression for Day 4 and Day 6 EBs in the presence of TLR2 ligand but in the absence of LIF .....                      | 95 |
| Figure 26. ESC treated with TLR-2 ligand, in the absence of LIF display minimal downregulation of Oct 4 expression. ....                                 | 98 |

DISCUSSION

Figure 27. The basic structure of chromatin .....103

LIST OF ABBREVIATIONS (in order as they appear)

PAMP- Pathogen Associated Microbial Patterns

TLR- Toll Like Receptors

NK- Natural Killer

T- Tumor derived

B- Bone marrow

ESC- Embryonic Stem Cells

LIF- Leukemia Inhibitory Factor

IL-6 Interleukin- 6

R-receptor

LIF-R $\beta$ - Leukemia Inhibitory Factor Receptor Beta

JAK- Janus Kinase

STAT3- Signal Transducer and Activator of Transcription 3

SHP- Src homology phosphatase

ERK- Extracellular Signal Regulated Kinase

DNA- deoxyribonucleic acid

MAPK- mitogen activated protein kinase

SH2- Src Homology 2

HPC- hematopoietic progenitor cell

TNF- tumor necrosis factor

IL-11- interleukin 11

STAT1- Signal Transducer and Activator of Transcription 1

IL-3- Interleukin 3

SCF- Stem Cell Factor

Oct-4- Octomer- 4

Sox-2- Sex determining region y box 2

KLF- Kruppler Like Factor 4

SSEA-1- stage specific embryonic antigen-1

SDF-1-Stromal Derived Factor 1

MyD88- Myeloid differentiation primary response protein 88

TIR- Toll/Interleukin-1Receptor associated Kinase

IFN- $\gamma$ - Interferon gamma

TRIF- TIR domain adaptor inducing interferon  $\beta$

IRAK- Interleukin 1 receptor associated kinase

AP-1- Activating protein 1

NF- $\kappa$ B- Nuclear Factor Kappa B

TRAF 6- TNF Receptor Associated Factor 6

IRFs- Interferon Regulatory Factors

PI3K- phosphoinositide-3 kinase

BMP- bone morphogenic protein

HSC- hematopoietic stem cells

MSC- mesenchymal stem cells

IKB- inhibitor of kinase B



## INTRODUCTION

Survival of an organism depends on how prompt its innate immune system responds to an outside pathogen. The innate immune system is the first line of defense and is made up of myeloid cells. Myeloid cells include macrophages, neutrophils, and dendritic cells. Pathogen Associated Molecular Particles (PAMPs) are recognized by a Toll Like Receptor (TLR) on the surface of lymphoid cells and induce maturation and differentiation of myeloid cells (Nagai, Garrett et al. 2006).

Previous studies have shown TLRs to couple adaptive and innate immunity via lymphoid cells (Iwasaki and Medzhitov 2004). Lymphoid cells, include bone marrow derived B, thymus derived T, and Natural Killer (NK) cells. These cells are replenished by hematopoietic stem cells in the bone marrow (Kondo, Weissman et al. 1997). Stem cells are unique cells in the body formed during gestation, and are capable of self renewal. Embryonic (ES), fetal or adult stem cells preserve this unique quality. Stem cells can also give rise to multipotent progenitors that help replenish the hematopoietic and immune system, and other cell types of the body. They are products of ex-vivo culture of the blastocyst.

## **Embryonic Stem Cells**

Embryonic Stem (ES) cells have the unique ability to self renew and differentiate into derivatives of all three germ layers *in vivo* and *in vitro* (Friel, van der Sar et al. 2005). The three germ layers are ectoderm, mesoderm, and endoderm (Figure 1). ES cells are derived from the inner cell mass of the blastocyst (Evans and Kaufman 1981; Martin 1981; Axelrod 1984; Wobus, Holzhausen et al. 1984; Doetschman, Williams et al. 1988; Smith 2001). The blastocyst consists of an outer cell layer called the trophoblast that give rise to the placenta, and an inner cell layer called the inner cell mass that gives rise to all tissues of the body (Friel, van der Sar et al. 2005). Scientists isolated cells from this region in the mouse blastocyst and were able to maintain these cells in culture on gelatinized plates with feeder layers (Mintz and Illmensee 1975). A factor found in the feeder layer was identified that prevented differentiation and promoted stem cell self renewal of mouse ES cells (Martin and Evans 1974; Evans and Kaufman 1981; Martin 1981). Today this factor is known as Leukemia Inhibitory Factor (LIF). LIF allows murine ES cells to grow in the absence of a feeder layer (Smith, Heath et al. 1988; Williams, Hilton et al. 1988; Friel, van der Sar et al. 2005). Human ES cells do not respond to LIF. Important unknowns are finding the factors that induce and maintain self renewal of human ES cells.

Figure 1. Stem Cell Hierarchy adapted from (Wobus and Boheler 2005). mES cells come from the inner cell mass of the blastocyst and can give rise to every cell type of the body.

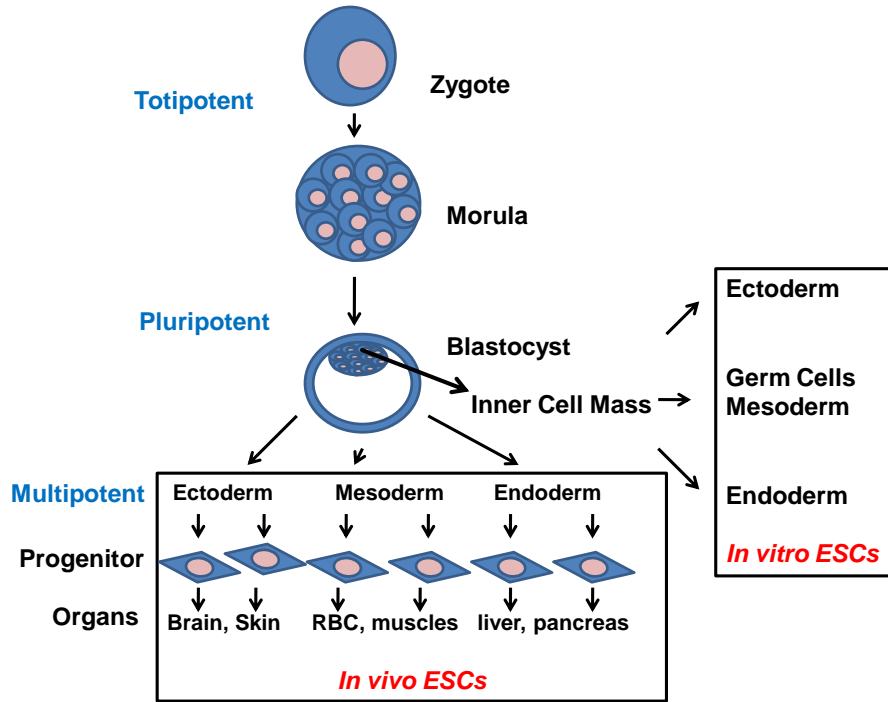


Figure 1

## **Leukemia Inhibitory Factor**

LIF is a member of the Interleukin (IL)-6 family of cytokines. The LIF receptor (R) consists of LIF-R $\beta$  and the receptor gp130 (Figure 2). The binding of LIF to its receptor on mES cells activates two major pathways, the Janus tyrosine associated kinase (JAK) - signal transducer activator of transcription 3 (STAT-3) Pathway and the SHP2-ERK Pathway (Figure 2) (Burdon, Chambers et al. 1999; Burdon, Stracey et al. 1999). LIF binding to LIF-R $\beta$  activates the JAKs which phosphorylate the Src Homology 2 (SH-2) domain of its downstream target, STAT-3. Once STAT-3 is phosphorylated it undergoes autophosphorylation and forms a STAT-3 homodimer. The STAT-3 dimer then translocates to the nucleus and binds to DNA binding sites of genes which control murine ES cell self-renewal (Friel, van der Sar et al. 2005).

Another pathway that is activated by LIF is the SHP2-ERK pathway via the gp130 receptor. The LIF-gp130R activates the RAS/MAPK pathway. SHP2 associates with Gab1, which causes the activation of Ras which induces the transactivation of MAPKs and ultimately ERK phosphorylation. This pathway is thought to lead to differentiation of murine ES cells (Burdon, Stracey et al. 1999; Burdon, Smith et al. 2002).

A recent report has shown that mesenchymal stem cells which give rise to bone cartilage, adipose tissue, and chondrocytes can remain in an undifferentiated/proliferating state when Pam<sub>3</sub>Cys is bound to its receptor TLR-2 in these cells (Pevsner-Fischer, Morad et al. 2007). This is an important finding because in murine ES cells the activation of the MAPK/ERK pathway is thought to promote differentiation.

Figure 2. LIF/STAT3 Paradigm for ES cell Self Renewal. Some parts of the Figure were adapted from (Friel, van der Sar et al. 2005). LIF activates the JAKs which then activates STAT3 and forms a homodimer which activates expression of Nanog and Oct-4 genes. TLRs may activate the Gab1-Shp2 MEK/ERK pathways.

# Current LIF/STAT3 Paradigm for ES cell Self Renewal

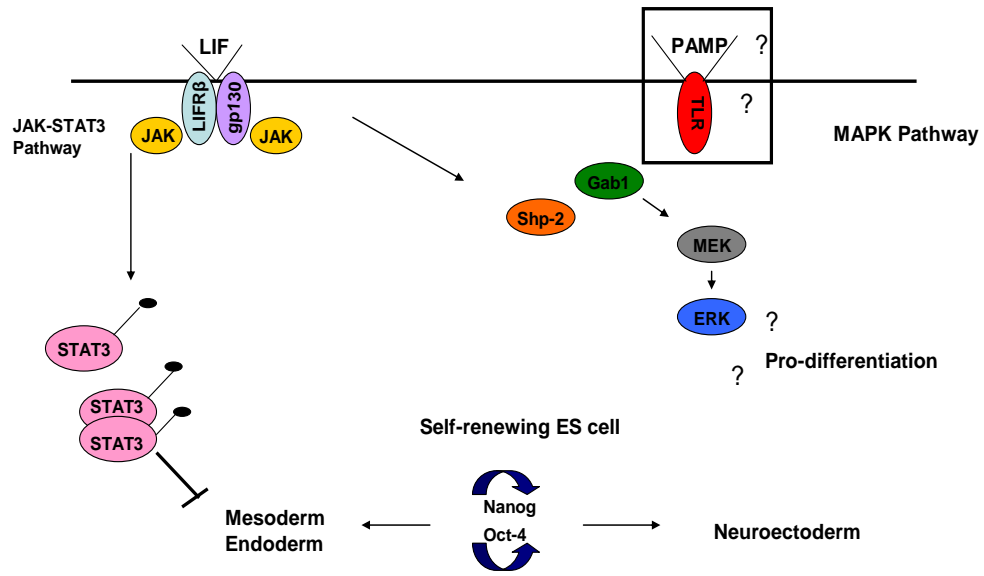


Figure 2

Previous studies have shown that activation of gp130 R $\beta$  can elicit production of IL-6, TNF- $\alpha$ , and IL-11 (Hilton, Hilton et al. 1994; Friel, van der Sar et al. 2005; Jenkins, Roberts et al. 2005), which are cytokines produced in response to activation by TLRs. The IL-6 cytokine family has a role in the biological activities of multiple hematopoietic lineages and helps to maintain pluripotency of mouse (m) ES cells (Burdon, Chambers et al. 1999). For example, they can stimulate the production of immature hematopoietic progenitor cells (HPC) when used in synergy with stem cell factor (SCF) and interleukin (IL)-3 (Dexter, Allen et al. 1978; Jenkins, Roberts et al. 2005) and directly stimulate megakaryocytes to become functionally mature. The binding of IL-6 to the gp130 subunit induces gp130 homodimerization which leads to activation of JAKs (Heinrich, Behrmann et al. 1998). This ultimately leads to the phosphorylation of STAT-1 or STAT-3 (Gerhartz, Heesel et al. 1996).

Studies have shown TLR2 activation can lead to an increased production of IL-6 and TNF- $\alpha$  in macrophage cells. This cytokine production will be used as one means to determine if TLR-2 is functional in mES cells in our studies.

### **Self Renewal Markers**

There are several mouse/human ES cell self renewal markers that are distinct in undifferentiated ES cells. They include Nanog, Oct 4, and Sox 2 (Niwa, Miyazaki et al. 2000; Avilion, Nicolis et al. 2003; Sato, Meijer et al. 2004; Friel, van der Sar et al. 2005). Mouse ES cells in un-differentiated states also express distinctive markers. These include an isozyme of alkaline phosphatase and SSEA-1. (Solter and Knowles 1978; Wobus,



Holzhausen et al. 1984; Thomson, Itskovitz-Eldor et al. 1998; Reubinoff, Pera et al. 2000; Reubinoff, Pera et al. 2001; Xu, Inokuma et al. 2001; Henderson, Draper et al. 2002; Friel, van der Sar et al. 2005). Oct-4 and Sox-2 but not Nanog are thought to be regulated by the transcription factor STAT-3 (Niwa, Burdon et al. 1998; Thomson, Itskovitz-Eldor et al. 1998; Pesce, Anastassiadis et al. 1999; Friel, van der Sar et al. 2005). Nanog is downstream of the transcription factor Oct-4, and they both play a critical role in murine ES cell self renewal (Niwa, Miyazaki et al. 2000; Friel, van der Sar et al. 2005). Although the expression of these markers are considered one way to determine a non-differentiated state, the best way to determine non-differentiated state is putting the ES cells back into a blastocyst to develop into a mouse, or place the cells into a mouse to for teratomas.

STAT-3 activation is not involved in TLR activation pathway in macrophages therefore this pathway was not studied in ES cells (Hu, Chen et al. 2007). The regulation of STAT-3 is critical in the homeostasis of hematopoiesis because STAT-3 when hyper-activated can act as an oncogene (Bromberg, Wrzeszczynska et al. 1999). Previous data has shown that STAT-3 plays an important role in the homeostasis of the undifferentiated and differentiated states of murine ES cells by activating ES cell self renewal marker Oct-4 (Niwa, Burdon et al. 1998; Friel, van der Sar et al. 2005; Guo, Mantel et al. 2008).

### **Toll-Like Receptor Pathway**

Toll-Like Receptors (TLRs) play a critical role in innate and adaptive immune responses against microbial pathogens (Akira, Takeda et al. 2001; Kambris, Hoffmann et

al. 2002; Beutler, Hoebe et al. 2003; Gangloff, Weber et al. 2003; Beutler, Hoebe et al. 2004; Hoebe, Janssen et al. 2004; Beutler, Jiang et al. 2006). Today there are ten TLRs reported in humans and 12 TLRs reported in mice (Takeda and Akira 2005). They include TLR-1-10 in humans and TLR1-9, RP105/11, MD1/12, and MD2/13 in the murine system. TLR ligands better known as PAMPs include lipopolysaccharides (LPS) of Gram negative bacteria such as *Salmonella* or *Escherichia coli* which activate TLR-4 (Figure 3) (Poltorak, He et al. 1998; Hoshino, Takeuchi et al. 1999). Lipoprotein, lipopeptides, and peptidoglycan of Gram positive bacteria are recognized by TLR-2. TLR-2 forms a TLR-1/2 and or 2/6 heterodimer which recognizes triacyl and diacyl lipoproteins respectively (Figure 3 and 4) (Takeuchi, Hoshino et al. 1999; Ozinsky, Underhill et al. 2000; Takeuchi, Kaufmann et al. 2000; Takeuchi, Sato et al. 2002). Pam<sub>3</sub>Cys is a synthetic triacyl lipoprotein and known activator of the TLR-2/1 heterodimer (Shimizu, Kida et al. 2008).

Figure 3. Toll Like Receptor Pathway. Some parts of this figure were adapted from (Naumann 2000; Kawai and Akira 2005). TLR-1 and TLR-2 form a heterodimer which is triggered by lipoproteins such as Pam<sub>3</sub>Cys, while TLR-6 and TLR-2 form a heterodimer that is activated by diacyl lipoproteins. LPS is the PAMP that triggers TLR-4 to illicit an immune response.

# Toll Like Receptor Pathways

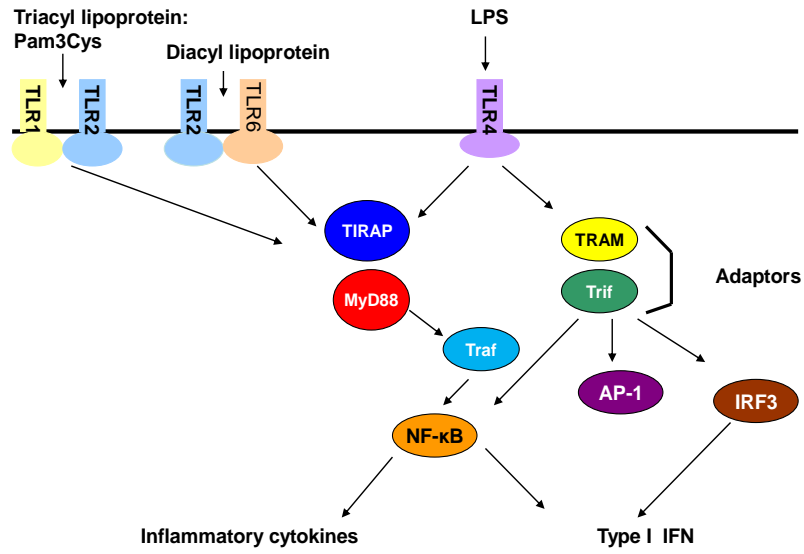


Figure 3

Figure 4. TLR-2 mediated signaling pathways adapted from (Arbibe, Mira et al. 2000; Naumann 2000; Kawai and Akira 2005; Kawai and Akira 2006). Ligands bind to heterodimers TLR-1/2, and TLR-2/6. Triacyl lipoproteins bind TLR-1/2 and Diacyl lipoproteins bind to TLR-2/6. They both mediate their activities through the adaptor molecules MyD88 and TIRAP, and recruit IKK which phosphorylates NF- $\kappa$ B and cause it to translocate to the nucleus.

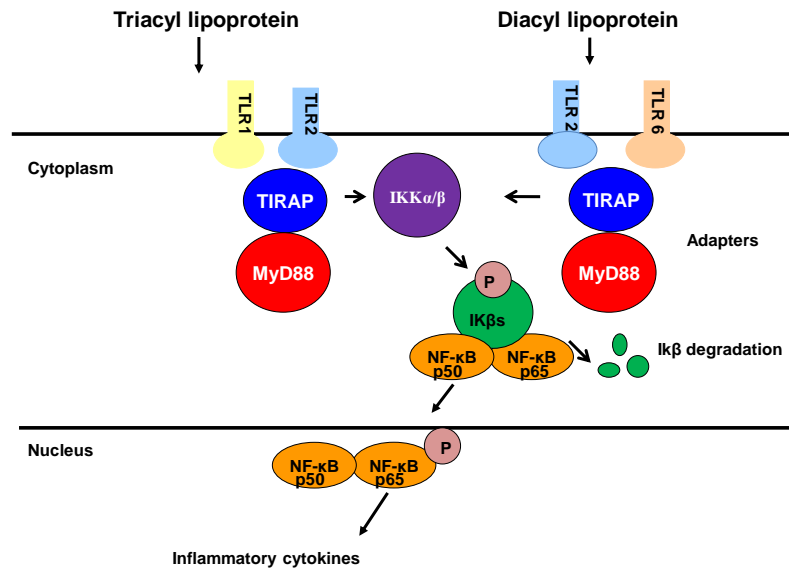


Figure 4

TLR stimulation by PAMPs trigger signaling cascades that require intracellular adaptive proteins such as myeloid differentiation primary response protein 88 (MyD88), Toll Interleukin-1 receptor (TIR) domain-containing adaptor inducing interferon-beta (IFN- $\beta$ ) also known as TRIF, and Interleukin 1 receptor associated kinase (IRAK) (Figure 3 and 4) (Ferrandon, Imler et al. 2004; Takeda and Akira 2005). Activation of most TLRs induce the production of cytokines via the MyD88 pathway, excluding TLR-3 which uses a MyD88-independent/TRIF pathway (Oshiumi, Matsumoto et al. 2003; Yamamoto, Sato et al. 2003). This leads to the activation of transcription factors such as activating protein 1 (AP-1), nuclear factor kappa-B (NF- $\kappa$ B), and interferon regulatory factors (IRFs) (Figure 4).

### **Nuclear Factor of Kappa light polypeptide gene enhancer in B cells**

Nuclear factor kappa B (NF- $\kappa$ B) is a Rel family transcription factor composed of homo and heterodimers such as p50 and p65 subunits (Arbibe, Mira et al. 2000) (Figure 4). NF- $\kappa$ B plays an important role in mammalian immunity and is activated by TLRs (Rosetto, Engstrom et al. 1995). TLRs initiate this pathway leading to NF- $\kappa$ B activation via signals through MyD88, IRAK, and TNF receptor associated factor -6 (TRAF6) adaptor protein molecules (Arbibe, Mira et al. 2000; Bowie and O'Neill 2000; Irie, Muta et al. 2000) (Figure 4). The inactive form of NF- $\kappa$ B is a cytoplasmic heterodimer that consist of p50 and p65 subunits (Arbibe, Mira et al. 2000). Upon TLRs activation, I $\kappa$ B kinases (IKKs) are activated. I $\kappa$ B, the NF- $\kappa$ B inhibitor is degraded thus allowing NF- $\kappa$ B to translocate to the nucleus to mediate transcriptional gene activation (Mercurio, Murray

et al. 1999; Zandi and Karin 1999; Arbibe, Mira et al. 2000; Arsur, Mercurio et al. 2000) (Figure 4).

Previous studies have shown NF- $\kappa$ B can induce tissue repair genes, inflammation, and neutrophil-specific chemokines in mouse embryonic fibroblasts and macrophage cells that are in a necrotic state (Li, Carpio et al. 2001). Therefore, it is thought that the triggering of NF- $\kappa$ B by TLRs may play a role in survival of the ES cells. Thus, we performed survival assays to determine if TLR activation can enhance survival of mES cells.

Previous studies have shown TLRs 2 and 4 to be expressed in human hematopoietic progenitor cells and when stimulated with their ligands, to help replenish cells of the innate immune system *in vitro* (Banchereau and Steinman 1998; Nagai, Garrett et al. 2006). Previous studies have also shown that mesenchymal stem cells (MSC) express all TLRs except 9 and when stimulated with their ligands prevent differentiation of MSCs into chondrocytes, adipose tissue, and cartilage, thus causing an increase in MSC proliferation in their non-differentiated state (Pevsner-Fischer, Morad et al. 2007). It was this information that interested us in studying a role for TLRs and their ligands in ES cell function. Activation of TLRs can promote the production of multiple cytokines and chemokines at a transcriptional level thus influencing the adaptive immune response (Figure 4). Some cytokines and chemokines whose secretion is induced by TLRs, are not produced or expressed only at low levels in the conditioned media of undifferentiated E14 ES cells. This includes TNF- $\alpha$ , and IL-6. (Guo, Graham-Evans et al. 2006). Therefore in the current studies, the expression of these cytokines and



transcription factors via the IKK- $\alpha\beta$ /NF- $\kappa$ B signaling pathway upon TLR stimulation was performed to determine the functionality of specific TLRs in mES cells

### **Cytokines IL-6 and TNF- $\alpha$**

IL-6 is a member of the IL-6 cytokine family and elicits a response via the gp130 receptor-beta (R $\beta$ ) subunit. Once IL-6 binds to its soluble IL-6 receptor-alpha (R $\alpha$ ) subunit, gp130 homodimerizes and activates the JAKs. JAKs then activate STAT-1 or STAT-3 (Gerhartz, Heesel et al. 1996). Previous studies have shown that homeostasis of STAT-3 activation plays a role in mediating the cellular production of immature or committed hematopoietic progenitors, and is regulated by IL-6 production (Jenkins, Roberts et al. 2005; Chung, Park et al. 2006; Jenkins, Roberts et al. 2007). Previous reports have shown that in the absence of IL-6 signaling there is a decrease in STAT3 hyper-activation and abnormal lymphopoiesis. Previous reports also have shown that if IL-6 is deleted in mice there are abnormalities of both immature and committed progenitors from multiple lineages from the spleen and bone marrow (Dexter, Allen et al. 1978; Zipori 1989; Zipori 1990; Zipori 1992; Bernad, Kopf et al. 1994). IL-6 plays a role in mediating pathological hematopoietic and lymphoid responses by STAT-3 hyper-activation (Jenkins, Roberts et al. 2007).

The over expression of IL-6 could lead to abnormalities i.e. tumorigenesis and human lymphoproliferative and myeloproliferative diseases, including multiple myeloma (MM), non-Hodgkin's lymphoma (NHL), and acute myeloid leukemia (AML) which all display STAT3 deregulated activation (Jenkins, Roberts et al. 2007). We considered it

important to determine the role of TLRs in mESC differentiation, survival/proliferation and self renewal. Some TLRs are capable of inducing the production of inflammatory cytokines, such as IL-6, by antigen presenting cells. To date, IL-6 hasn't been shown to be produced in mESCs (Guo, Graham-Evans et al. 2006).

TNF- $\alpha$  is a cytokine produced by TLR-2/4 signaling, and is required for dendritic cell maturation and migration. (Kurt-Jones, Sandor et al. 2004; Adema, de Vries et al. 2005). It is a major player in anti-tumor immunity and has been shown to reduce the activation of integrin  $\alpha$ V $\beta$ 3, an adhesion receptor that plays a key role in tumor angiogenesis, and causes a decrease in endothelial cell adhesion and survival (Ruegg, Yilmaz et al. 1998).

The cytokines whose production are signaled via TLRs play a role in cell survival and replenishment of the innate immune system and we sought to determine if they play a role in the proliferation and survival of undifferentiated mES cells. ES cells are in a highly regulated environment and respond to various growth factors, chemokines, and cytokines differently. Studies have shown that bone morphogenic protein-4 (BMP-4), an anti neural factor in embryos in conjunction with LIF helps to maintain ES cells in a pluripotent state. Yet when ES cells are in BMP media alone, they differentiate into mesoderm and hematopoietic cells (Hilton, Hilton et al. 1994; Johansson and Wiles 1995; Ying, Stavridis et al. 2003). BMP interacts with serine threonine receptor heterodimers, while TLRs interact with MyD88 which activates serine threonine IRAK kinases IRAK1 and IRAK4 (Hilton, Hilton et al. 1994; Ying, Stavridis et al. 2003). BMP has no direct

effect on the STAT-3 pathway nor does it inhibit the MAPK/ERK pathway, suggesting that it acts in parallel with LIF/STAT-3 (Hilton, Hilton et al. 1994).

The cytokines produced by undifferentiated ES cells may be important in maintaining their stable environment and increase their survival and proliferation. When this niche is disrupted (i.e. when the ES cells are irradiated), there is an increase in levels of several cytokines whose production is induced upon TLR activation in other cell types. Therefore, we propose that these cytokines may play a role in ES cell survival because these cytokines may normally be used to maintain the hematopoietic stem cell niche (Hackney, Charbord et al. 2002; Zhang, Niu et al. 2003). The levels of these cytokines were at lower levels or not detected in normal mES cell conditioned media (Guo, Graham-Evans et al. 2006). The cytokines that were at higher levels under apoptotic conditions include IL-6 and TNF $\alpha$ . Production of the latter cytokines mentioned, are induced when either TLR-2 or TLR-4 are activated on other cell types such as MSC (Pevsner-Fischer, Morad et al. 2007).

## AIMS

AIM 1: Determine if murine Embryonic Stem (ES) cells express functional Toll Like Receptors (TLR), and if their ligands can induce or modulate murine ES cell proliferation/survival, self renewal and/or differentiation in the presence of Leukemia Inhibitory Factor (LIF).

AIM 2: Clarify the roles of TLR ligands and their receptors on ES cell function under differentiating conditions in the absence of LIF.

## MATERIALS AND METHODS

### Part I

#### Do murine ES cells express Toll Like Receptors?

##### **Cell Cultures**

Wild-type ESC lines, E14, R1, CGR8 were cultured on gelatinized plates in Dulbecco's modified Eagle's medium (DMEM) with 15% ESC qualified fetal bovine serum (FBS) (Gibco-BRL, Grand Island, NY),  $5.5 \times 10^{-2}$  mM  $\beta$ -mercaptoethanol (Gibco-BRL, Grand Island, NY) and  $10^3$  U/mL of LIF; (Chemicon, Temecula, CA). Raw264.71, a mouse macrophage cell line, was purchased from ATCC (Manassas, VA) and cultured in DMEM (Gibco, Grands Island, NY) with 15% FBS.

##### **Primers**

RT-PCR primers were designed and optimized as previously reported (Derbigny, Hong et al. 2007) (Table 1). Primers were purchased from Invitrogen (Carlsbad, CA).

**Table 1. Primers used for RT-PCR**

| Product | Sense Primer                   | Anti Sense Primer            | Product Size(bp) |
|---------|--------------------------------|------------------------------|------------------|
| TLR1    | 5'-GTGAATGCAGTTGGTGAAGAAC-3'   | 5'-GCTCATTGTGGGACAAATCCAA-3' | 450              |
| TLR2    | 5'-CTTGTTTCTGAGTGTAGGGGCT-3'   | 5'-CGAACCAGGAGGAAGATAAACT-3' | 483              |
| TLR3    | 5'-ACCCTTCAAAAACCAGAAGAATC-3'  | 5'-GGACAGACGCTGTATATTGTTG-3' | 521              |
| TLR4    | 5'-TCAACCCCTTGAAGATCTTAAA-3'   | 5'-CAATTGGGTTCAAAGACATGTC-3' | 459              |
| TLR5    | 5'-CAGTATCAGCTGATGAGACATGAG-3' | 5'-GACAGTACCGCAATAGGGATGG-3' | 463              |
| TLR6    | 5'-TACGGAGCCTTGATTTCCATGT-3'   | 5'-TGGACCTCTGGTGAGTTCTGAT-3' | 485              |
| TLR7    | 5'-AACCACATACCAAGCATCTCTC-3'   | 5'-AAATTAGGTGGCAAAGTGGTGG-3' | 458              |
| TLR8    | 5'-CAGAGTTGGATGTTAAGAGAGA-3'   | 5'-GTATATAACTGGTTGTCTTCCA-3' | 459              |
| TLR9    | 5'-GCCTGAGCCACACCAACATCCT-3'   | 5'-CCAGACCTTGAACCAGGAAGA-3'  | 477              |

Adapted from (Derbigny, Hong et al. 2007)

### **RNA Extraction**

$5 \times 10^5$  E14 mES cells were seeded in 60 mm culture dishes and grown to confluency. Total cellular RNA was extracted using the QIAGEN RNeasy Kit<sup>TM</sup> according to manufacturer's instructions (Qiagen Inc., Valencia, CA, USA). RNA was stored in RNase- free water at -80°C.

### **DNase Treatment**

RNA samples were DNase treated using QIAGEN DNase free<sup>TM</sup> according to manufacturer's instructions (Qiagen Inc., Valencia, CA, USA).

### **Reverse transcriptase-polymerase chain reaction**

Expression of TLRs 1 -9 and GAPDH were measured using a semi quantitative RT-PCR one-step AccessQuick<sup>TM</sup> RT-PCR system. (Promega, Madison, WI). The oligonucleotide primers used for TLR-1 –TLR-9 and GAPDH have been reported (Derbigny, Hong et al. 2007). Total RNA was isolated from the E14 mESC line and Raw 264.71 mouse macrophage cells using RNeasy minicolumns (QIAGEN, Valencia, CA). All RNA samples were treated with RNasefree DNase I (QIAGEN, Valencia, CA) to remove genomic-DNA contamination and were quantified by spectrophotometric analysis. RNA integrity was confirmed by agarose gel electrophoresis. Using 1µg of total RNA as the template for each reaction, RT-PCR was accomplished by using a polymerase kit (Access RT-PCR; Promega, Madison, WI). Cycling conditions were as follows: 1 min and 30 s of initial denaturation at 95°C, followed by eight cycles of 30 s at 95°C, 15 s at 60°C, and

30 s at 72°C. After the initial 8 cycles, the 30-s 72°C extension cycle was increased 3 s per cycle for 25 cycles. During the 40th cycle, the 72°C extension was 3 min to complete the RT-PCR. Reactions were also amplified in the absence of reverse transcriptase as negative controls. PCR products were electrophoresed on 1.5% agarose gels. Each DNA band was visualized by staining with ethidium bromide. Experiments were done in triplicate.

### **Primary antibodies and TLR ligands**

Primary antibodies were: isotope-control PE rat IgG2a (eBioscience, San Diego, CA; 17-4331), isotype-control APC rat IgG2b (eBioscience, San Diego, CA;12-4321), TLR2/CD282 anti-mouse clone 6C2 (eBioscience, San Diego, CA ;17-9021) and anti-mouse TLR-4/MD2 (eBioscience , San Diego, CA; 12-9924), p-IKK $\alpha$ / $\beta$  (Cell Signaling, Denver, MA; 2697S), myeloid derived factor 88 (MyD88) (Abcam, Cambridge, MA; ab 2068), total IKK $\alpha$ / $\beta$  (Santa Cruz, Santa Monica, CA; sc7607), NF- $\kappa$ B p65 (Upstate Cell Signaling Solutions, Temecula, CA; 0701049995), PARP (Cell Signaling, Denver, MA; 9542), and blocking anti-TLR-2 antibody, T2.5 (Biolegend, San Diego, CA; 121802), and ERK1/2 (Cell Signaling, Denver, MA; 9102). TLR ligands included: TLR-2 agonist, Pam<sub>3</sub>Cys, and TLR-3 agonist, Poly I:C purchased from (Invitrogen, Carlsbad, CA). TLR4 agonist, LPS from Salmonella was from Sigma Aldrich, St. Louis, MO.



#### **Flow Cytometric Analysis for TLR-2 and TLR-4**

An aliquot of  $1 \times 10^6$  cells was washed in PBS containing 1% BSA (PBS-1% BSA) three times. 100 $\mu$ L of staining buffer (PBS containing 1% BSA and .5% EDTA) was added to the cell pellet along with 5 $\mu$ L of TLR-1-PE, TLR4-PE, or TLR-2-APC antibody for 1hr in the dark at 4°C. Cells were washed three times with wash buffer (PBS containing 1% BSA) and 300 $\mu$ L of wash buffer was added to cells and cells for analysis by flow cytometry. IgG2a was used as an isotype control for TLR1-PE, and TLR4-PE and IgG2B was used as an isotype control for TLR-2-APC

#### **Flow Cytometric Analysis for Oct-4, SSEA-1, SOX 2, and KLF-4**

Wild-type ESC lines E14, R1, and CGR8 were cultured with and without TLR-2, TLR-3, and TLR-4 agonists. Cells were collected after days 1, 2, 3, 4, and 5 for proliferation assay and after 30 minutes, 1 hr, and 4 hrs of TLR-agonist treatment. An aliquot of  $1 \times 10^6$  cells was washed in PBS containing 1% BSA (PBS-1% BSA) and incubated with anti-mouse CD16/CD32 receptor monoclonal antibody at 1 $\mu$ g/100 $\mu$ L (Pharmigen, San Diego, CA) to block non-specific binding of immunoglobulin to mouse FcIII/II receptors, and cells were used for SSEA-1 antibody staining. Cells analyzed for SSEA-1 expression were incubated with a 1:20 dilution of monoclonal anti-SSEA-1 antibody (Santa Cruz Biotechnology, Santa Cruz, CA) for 1 hour at 4°C.

Cells were then washed and incubated with a 1:100 dilution of FITC: goat anti-mouse IgM antibody (Santa Cruz Biotechnology, Santa Cruz, CA) and analyzed. Remaining cells were fixed and permeabilized with Cytoperm/Cytofix (BD Biosciences,

San Jose, CA) and stained with a 1:100 dilution rabbit-mouse Oct-3/4 polyclonal antibody (Chemicon, Temecula, CA) and KLF-4 and Sox-2 antibodies (Santa Cruz Biotechnology, Santa Cruz, CA ) for 1hr at 4°C in the dark. Cells were washed 3 times with 1mL of 1x Perm/Wash Buffer, followed by staining with 1:100 dilution of FITC: goat anti-mouse IgG antibody (Santa Cruz Biotechnology, Santa Cruz, CA). Finally, cells were washed 3 times with 1x Perm/Wash Buffer and resuspended in 300µL of 1x Perm Wash Buffer for FACScan analysis (Becton Dickinson, Sunnyvale, CA).

#### **Western Blot p-IKK, Total IKK, and MyD88**

Cells were lysed with 100µL of MPER (Pierce, Rockland, IL) with proteinase and phosphatase inhibitors added (40µL of proteinase and phosphatase inhibitors added to 4mL of MPER). The 1.5mL centrifuge tube was vortexed to resuspend the pellet into solution. Total protein in supernatant was collected.

After protein was collected, we determined protein concentration using BCA analysis reagents (Pierce, Rockland, IL). Standards were made using 200µL of BCA reagents and 20µL of each standard (125µg/mL-2000µg/mL). Samples were plated at a 1:10 dilution. All sample and standards were performed in triplicate. The plate was incubated at room temperature for 2 hours and analyzed using a spectrophotometer with a plate reader at 540nm.

After protein concentration was determined, 40µg/40µL of each protein sample was used to perform Western blotting analysis of E14 cells. Protein was electrophoresed on a 4-12% gel (Invitrogen, Carlsbad, CA) in the X Cell II Sure Lock Apparatus

(Invitrogen, Carlsbad, CA) at 120V for 1 hr. Next the gel was transferred to the PVDF membrane (Millipore, Temecula, CA) in the Cell II Blot Module (Invitrogen, Carlsbad, CA) in the X cell II Sure Lock apparatus (Invitrogen, Carlsbad, CA) at 25 V at 4°C for 2hrs. The MyD88 anti-rabbit (Chemicon, Temecula, CA), p-IKK anti -rabbit, Total- IKK, anti-rabbit, and  $\beta$ -actin anti-mouse (Santa Cruz Biotechnology, Santa Cruz, CA) antibodies were used.  $\beta$ -actin anti-mouse antibody was used as a loading control.

### **Enzyme Linked Immunosorbent Assay (ELISA) for Protein**

Cytokine release was assessed by enzyme linked immunosorbent assay (ELISA) with  $5 \times 10^5$  ESCs seeded in 24 well plates. Twenty-four hours later, the media was replaced with DMEM with or without the ligands for TLR-2 or TLR-4 respectively. IL-6, TNF- $\alpha$ , and IFN- $\beta$  protein amounts were determined by ELISA (Ready-SET-GO! ELISA kit, (eBioscience San Diego, CA) according to manufacturer's instruction. Standard curves were established using mouse recombinant IL-6, TNF- $\alpha$  and IFN- $\beta$  growth factors respectively. The assay detection limit was 4 pg/mL protein.

### **IL-6, TNF- $\alpha$ and IFN- $\gamma$ mRNA and protein expression**

Total RNA was isolated by TRIZOL preparation followed by phenol chloroform/isoamyl alcohol extraction and ethanol precipitation. Changes in IL-6, TNF- $\alpha$ , and IFN- $\gamma$  RNA levels in mES cells were analyzed by quantitative real time PCR polymerase chain reaction. Primers used for this assay were obtained from the Dent laboratory and are shown in Table 2. Relative changes in IL-6, TNF- $\alpha$ , and IFN- $\gamma$  were determined using the

$2^{-\Delta\Delta C_t}$  method. Data are expressed as fold change. To test our q-RT-PCR primers we analyzed cytokine expression in Raw264.71 mouse macrophage-like cells stimulated with TLR-2 and TLR-4 ligand.

**Table 2. Primers for qRT-PCR**

| <b>Product</b>                    | <b>Sense</b>                   | <b>Anti-Sense</b>           |
|-----------------------------------|--------------------------------|-----------------------------|
| <b>TNF-<math>\alpha</math></b>    | 5'-CACAAGATGCTGGGACAGTGA-3'    | 5'-TCCTTGATGGTGTGCATGA-3'   |
| <b>IFN-<math>\gamma</math></b>    | 5'-TCAAGTGGCATAGATGTGGAAGAA-3' | 5'-TGGCTCTGCAGGATTTTCATG-3' |
| <b>IL-6</b>                       | 5'-CCAGAAACCGCTATGAAGTTCCT-3'  | 5'-CACCAGCATCAGTCCCACGA-3'  |
| <b><math>\beta</math>-tubulin</b> | 5'-CTGGGAGGTGATAAGCGATGA-3'    | 5'-CGCTGTCACCGTGGTAGGT-3'   |

Obtained from Dent laboratory

### **Proliferation Assay**

We cultured E14 ES cells in the presence of LIF and the TLR-2 activator Pam<sub>3</sub>Cys in our experiments for cell suspension proliferation assays. ES cells under undifferentiated conditions without Pam<sub>3</sub>Cys stimulation served as a control. One hundred thousand E14 mESCs were stimulated with 0.1µg/mL, 0.5µg/mL, and 1.0µg/mL of Pam<sub>3</sub>Cys in 5 mL of undifferentiated media. Incomplete Media includes DMEM for undifferentiated ES cells (Hyclone, Waltham, MA), 15% FBS, 1% Penicillin/Streptomycin (Gibco, Grand Island, NY), 1% Pyruvate (Gibco, Grand Island, NY), 1% MEM Essential Vitamins (Gibco, Grand Island, NY), and 1% L-Glutamine (Gibco, Grand Island, NY). Complete Media was made with 50mL of incomplete media plus LIF at [1:10000] and β<sub>2</sub>-mercapthoethanol (2ME) at [1:1000] which were added fresh. Next the ES cells were incubated in a 5% CO<sub>2</sub> 37°C incubator for 5 days.

To harvest cells for counting each day cells were washed with 3mL of PBS, trypsinized with 1mL of trypsin-EDTA (Gibco, Grand Island, NY), and placed in the incubator for 5 minutes to remove cells from the bottom of plates. ES cells were washed with 5mL of incomplete media and spun down for 5 minutes at 12,000 rpm. Supernatant was removed and 1mL of incomplete media was added to the cells. Next 50µL of the cells were stained with 50µl of Trypan Blue (Gibco, Grand Island, NY) and 10µL of the cells was counted on the hemacytometer. This was done for samples harvested each day for the cells treated with or without Pam<sub>3</sub>Cys ligand.

### **Survival Assay for ESCs in the Presence of LIF**

ESC growth depends on serum. After withdrawal of serum from plates <25% confluency, 95% of ESCs die within 96 hours. To determine the effects of TLR-2 ligand, Pam<sub>3</sub>Cys on ESC survival, studies evaluated control medium, 200ng/mL SDF-1/CXCL12, 0.1µg/mL, 1.0µg/mL, and 10µg/mL of Pam<sub>3</sub>Cys, and 0.1µg/mL, 1.0µg/mL, and 10µg/mL of LPS. Reagents were added at the beginning of the experiments, and mES cell cultures were initiated without serum in 1% methylcellulose-based DMEM (5.5x 10<sup>-2</sup>mM 2-ME and 10<sup>3</sup>U/mL LIF) (Chemicon, Temecula, CA) at 2000 cells/mL. Serum was added at 0, 24, 48, or 96 hours to each group and colonies scored 7 days after addition of serum. The undifferentiated status of the cells was checked by staining of the cells with anti-mouse Oct-4, Sox-2, KLF, and SSEA-1 antibody.

### **Apoptosis Assay**

To analyze mESC's undergoing apoptosis, cell cultures were subjected to serum withdrawal in the presence of LIF. Reagents were added at the beginning of cultures as followed: Control medium, TLR-2 ligand, Pam<sub>3</sub>Cys (10µg/mL), TLR-4 ligand, LPS (10µg/mL), and SDF-1/CXL12 (200ng/mL). Cells were collected at days 1, 2, 3, and 4 after serum withdrawal and were stained with Annexin V (BD Biosciences, San Jose, CA). After withdrawal of serum for 4 days, mESCs were stained with undifferentiated markers Oct4, KLF4, SSEA1, and Sox2, respectively to determine if the cells remained undifferentiated.

## Part II

### **Day 4 and Day 6 EBs in Suspension**

We plated 1000 E14 mES cells/mL with or without 10 $\mu$ g/mL or 20 $\mu$ g/mL of Pam<sub>3</sub>Cys in IMDM media in the absence of LIF and mixed cells well in a 50mL conical tube before they were plated into a 35mm tissue culture plate. EB's are formed from ES cells in the absence of LIF. We plated cells in the absence of LIF for 4 and 6 days.

### **Flow Cytometry of Day 4 and Day 6 EBs**

EB's were accessed by flow cytometry for TLR-2 and TLR-4 and for non-differentiation markers like SSEA-1, Oct-4, Sox-2, and KLF-4 to determine if TLR-2 ligand will prevent the ES cells from differentiating to EB's, therefore we only checked undifferentiated markers and not for increases in lineage markers or cell types.

### **Western Blot of Oct-4, phosphorylated-ERK and Total ERK**

We performed Western blot analysis to determine if the TLR-2 ligand in the absence of LIF increased differentiation or helped to maintain stemness of ES cells, by looking at the expression of Oct-4 in the EBs treated with increasing doses of TLR-2 ligand as compared to EB's not treated with ligand, and its control, mES cells cultured in the presence of LIF. Cells were lysed with 100 $\mu$ L of MPER (Pierce, Rockland, IL) with proteinase and phosphatase inhibitors added (40 $\mu$ L of proteinase and phosphatase



inhibitors added to 4mL of MPER). The 1.5mL centrifuge tube was vortexed to resuspend pellet into solution and spun at 4°C for 10 minutes.

After protein was collected, we detected the protein concentration using BCA analysis reagents (Pierce, Rockland, IL). Standards were made using 200µL of BCA reagents and 20µL of each standard (125µg/mL-2000µg/mL), and samples were plated at 1:10 dilution. All samples and standards were done in triplicate. The plate was incubated at room temperature for 2 hours and analyzed using a spectrophotometer with a plate reader at 540nm.

After protein concentration was determined, 40µg/40µL of each protein sample was used to perform Western blotting analysis of E14 Day 4 and Day 6 EBs. Protein was electrophoresed on a 4-12% gel (Invitrogen, Carlsbad, CA) in the X Cell II Sure Lock Apparatus (Invitrogen, Carlsbad, CA) at 120 V for 1 hr. Next the gel was transferred to the PVDF membrane (Millipore, Temecula, CA) in the Cell II Blot Module (Invitrogen, Carlsbad, CA) in the X cell II Sure Lock apparatus (Invitrogen, Carlsbad, CA) at 25 V at 4°C for 2hrs. The Oct-3/4 (Chemicon, Temecula, CA), p-ERK anti -rabbit, Total ERK anti-rabbit, and β-actin (Santa Cruz Biotechnologies, Santa Cruz, CA) anti-mouse antibody was used to determine if the undifferentiated ES cells marker was expressed in differentiating conditions in the presence of TLR-2 ligand. β-actin anti-mouse antibody was used as a loading control.

## RESULTS

### Part I

#### mES Cells effects in the presence of LIF

##### **TLR2 is expressed at the message level and on the surface of mES cells**

Previous reports have shown that TLRs when activated on HSCs can cause HSCs to differentiate into B cells and dendritic cells thus helping in the replenishment of the immune system (Nagai, Garrett et al. 2006). Mesenchymal Stem Cells (MSCs) express functional TLRs and TLRs play a role in bone repair, proliferation of MSCs and prevent MSC differentiation into chondrocytes, adipocytes and osteoclasts (Fischer, et.al 2008). Little is known about TLRs and their role in mES cells, therefore we first determined if TLRs are expressed at the messenger RNA level using primers for TLRs 1-9 (Table 1). We found that mRNA for TLRs 1, 2, 3, 5, and 6 were expressed but not for 4, 7, 8, and 9 (Figure 5 A). Raw264.71, a mouse macrophage like cell line was used as a positive control expressing TLR-1-9 respectively (Figure 5 B and Table 2). There are antibodies available that detect TLR-2 and TLR-4 protein on the cell surface. Next, we determined if TLR-2 was expressed on the surface of mES cells and since mRNA for TLR4 was not expressed, we looked for protein expression of TLR-4, as a negative control. We found that TLR-2, but not TLR-4 was expressed on the surface of E14 mES cells (Figure 6) confirming the data shown at the gene level. Raw264.71 was used as a

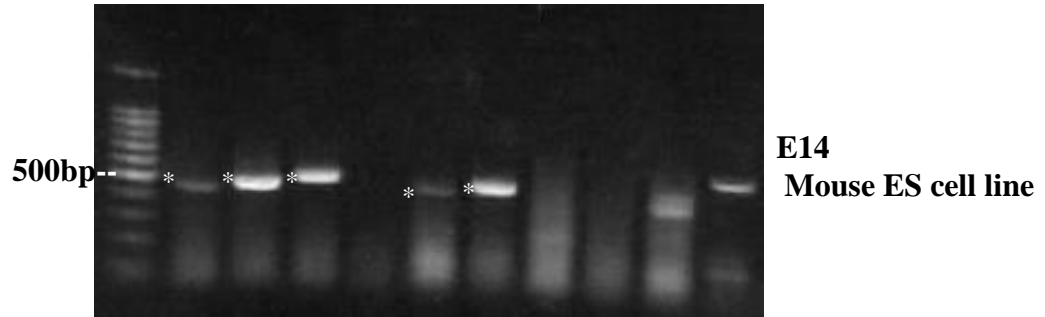
positive control and expressed TLR-2 and TLR-4 on its surface. We also checked R1 and CGR8 mES cells for TLR-2 and TLR-4 expression. We show that these cell lines express TLR-2 but not TLR-4 (Figure 7 and 8). These data show that TLR-2 is expressed on three mES cells, so we then focused on determining if TLR-2 was functional on E14 mES cells.

Figure 5. A.) Murine embryonic stem cells express mRNA for TLRs 1, 2, 3, 5 and 6 obtained from wildtype, E14 C57/B6 cell line. mES cells were subjected to RT-PCR with primers specific for TLR-1, TLR-2, TLR-3, TLR-4, TLR-5, TLR-6, TLR-7, TLR-8, and TLR-9. PCR products were separated by 2% agarose gel electrophoresis and visualized with ethidium bromide, \* marks appropriate size of RT-PCR products, -RT, control samples without reverse transcriptase were a negative control for all primers (not shown), +, GAPDH served as a positive control. B.) Raw264.71 was used as a positive control for all primers. These results are representative of the same findings in six separate experiments.

**Toll Like Receptor:**

**M 1 2 3 4 5 6 7 8 9 +**

**A.**



**B.**

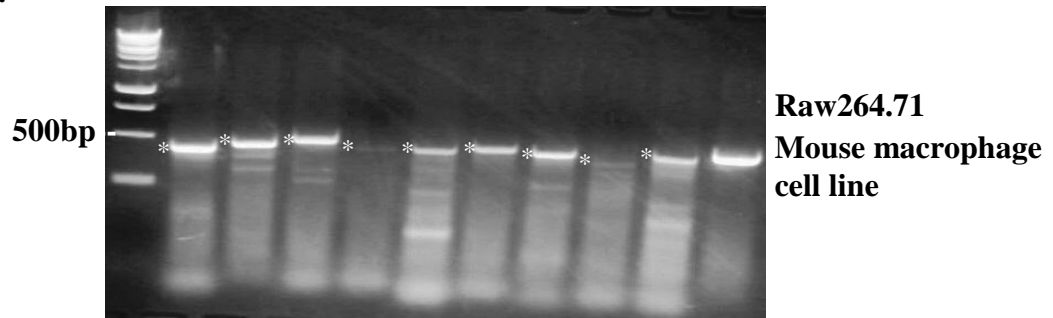


Figure 5

**Table 3. TLR1-9 mRNA expression in cell lines**

---

| <b>Cell line</b> | <b>TLR1</b> | <b>TLR2</b> | <b>TLR3</b> | <b>TLR4</b> | <b>TLR5</b> | <b>TLR6</b> | <b>TLR7</b> | <b>TLR8</b> | <b>TLR9</b> |
|------------------|-------------|-------------|-------------|-------------|-------------|-------------|-------------|-------------|-------------|
| <b>E14</b>       | +           | +           | +           | -           | +           | +           | -           | -           | -           |
| <b>Raw264.71</b> | +           | +           | +           | +           | +           | +           | +           | +           | +           |

---

**TLR mRNA levels were determined by RT-PCR using mouse specific primers. Levels are noted as +, strong band, - band not detected.**

Figure 6. Expression of TLR-2, and TLR-4 was analyzed on the surface of E14 mES cells. A. TLR-2 was expressed on mES cells compared to IgG2a isotype control, B.TLR-4 was not expressed on the surface of mES cells compared to isotype control IgG2b, Raw264.71 mouse macrophage cell line was used as a positive control to confirm that the antibodies worked properly C.TLR-2-APC, and D.TLR-4-PE. TLR-2-APC and TLR-4-PE protein levels were analyzed by flow cytometry. IgG2a-APC and IgG2b-PE were used as the respective isotype controls for both cell lines in each separate experiment. These results are representatives of similar finding in 4 experiments mcf=mean cell fluorescence, a measure of the expression levels of protein on the cell surface.

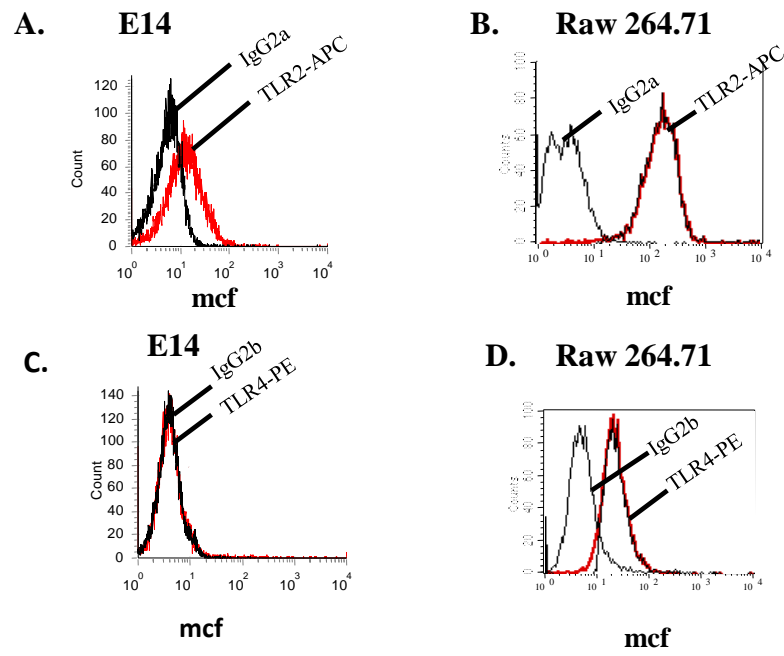


Figure 6



Figure 7. Expression of TLR-2, and TLR-4 was analyzed on the surface of CGR8 mES cells. A. TLR-2 was expressed on mES cells compared to IgG2a isotype control, B. TLR-4 was not expressed on the surface of mES cells compared to isotype control IgG2b, Raw264.71 mouse macrophage cell line was used as a positive control to confirm that the antibodies worked properly C. TLR-2-APC, and D. TLR-4-PE. TLR2-APC and TLR-4-PE protein levels were analyzed by flow cytometry. IgG2a-APC and IgG2b-PE were used as the respective isotype controls for both cell lines in each separate experiment. These results are representatives of similar findings in 4 experiments mcf=mean cell fluorescence, a measure of the expression levels of protein on the cell surface.

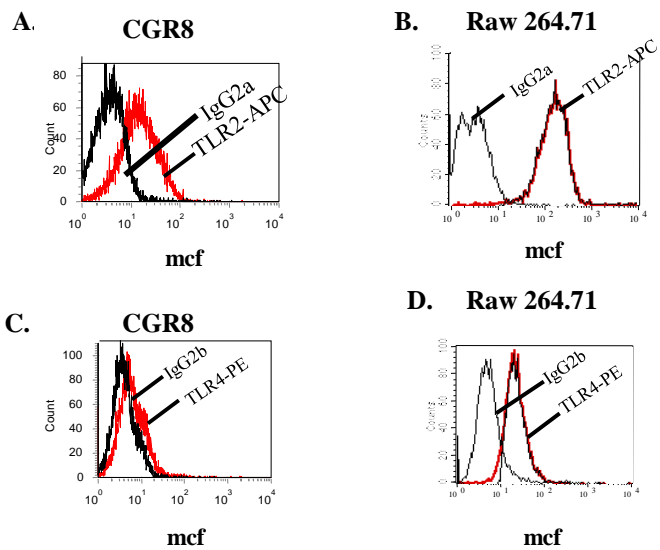


Figure 7

Figure 8. Expression of TLR-2, and TLR-4 was analyzed on the surface of R1 mES cells. A. TLR-2 was expressed on mES cells compared to IgG2a isotype control, B.TLR-4 was not expressed on the surface of mES cells compared to isotype control IgG2b, Raw264.71 mouse macrophage cell line was used as a positive control to confirm that the antibodies worked properly C.TLR-2-APC, and D.TLR-4-PE. TLR-2-APC and TLR-4-PE protein levels were analyzed by flow cytometry. IgG2a-APC and IgG2b-PE were used as the respective isotype controls for both cell lines in each separate experiment. These results are representatives of similar findings in 4 experiments mcf=mean cell fluorescence, a measure of the expression levels of protein on the cell surface.

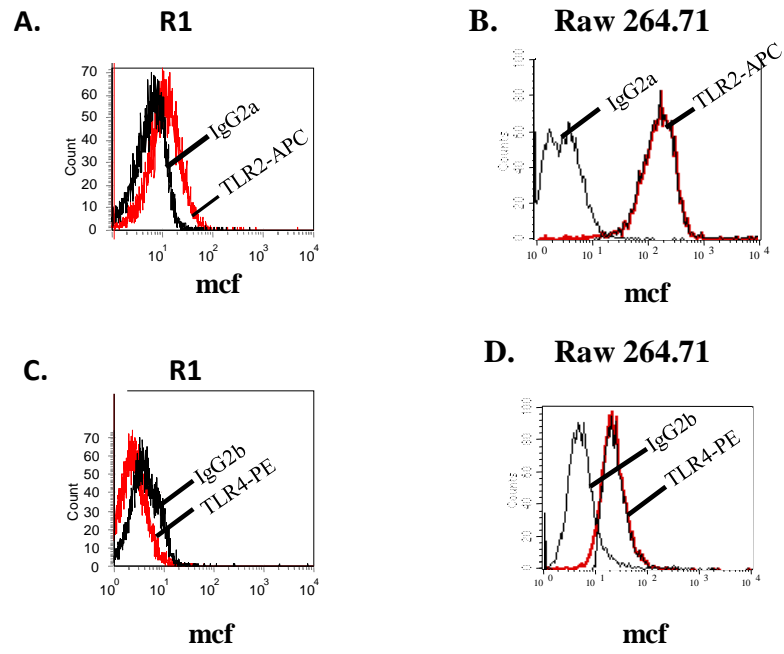


Figure 8

### **Treatment of mES cells with TLR-2 ligand Pam<sub>3</sub>Cys increases NF- $\kappa$ B nuclear translocation**

mES cells were plated in the presence and absence of Pam<sub>3</sub>Cys, a TLR-2 ligand, for 15 minutes to 1 hour in the presence of LIF. The concentration of TLR ligands were based on prior studies . Cells that were treated with 10 $\mu$ g/mL of Pam<sub>3</sub>Cys, showed an increase in NF- $\kappa$ B nuclear expression compared to cells that were not treated. Cells were also treated with 10  $\mu$ g/mL of bacterial lipopolysacchride (LPS), a TLR-4 ligand, but no enhancement in translocation was detected with LPS (Figure 9). We also checked for the expression of MyD88 and p-IKK in the E14 mESCs (Figure 10 and 11). We show that the E14 mESCs express MyD88, and after 15 minutes exposure to TLR-2 ligand Pam<sub>3</sub>Cys or 30 minutes with Poly I:C, a ligand for TLR-3, the mES cells show an increase in phosphorylation of p-IKK demonstrating that TLR-2 and TLR-3 are functional likely by the MyD88/IKK pathway in the E14 mES cells (Figures 10 and 11).

### **TLR-2 Ligand Pam<sub>3</sub>Cys enhances E14 mES cell Proliferation**

To determine if TLR-2 plays a role in mES cell proliferation, mES cells were treated with varying doses of the TLR-2 ligand, Pam<sub>3</sub>Cys in presence of LIF. mES cells manifested a significant 2 fold increase in total cell number by day 3 at each dosage of Pam<sub>3</sub>Cys (Figure 12 A). This increase was also noted at days 4 and 5 (Figure 12 A and B). In order to determine if the Pam<sub>3</sub>Cys effects were mediated through TLR-2, we performed experiments in the presence and absence of a blocking antibody for TLR-2 (T2.5). The

antibody blocked enhanced proliferation on day 3 induced by Pam<sub>3</sub>Cys (Figure 12 C and D).

**Cytokine and chemokine expression levels upon stimulation with TLR-2 ligand**  
mESCs were treated with Pam<sub>3</sub>Cys a ligand for TLR-2, Poly I: C, a ligand for TLR-3 and LPS, a ligand for TLR-4 in a 96 well plate for 18 hours. ELISA for IL-6, TNF- $\alpha$  and IFN- $\beta$  were performed to determine if there would be an increase in cytokine release upon TLR challenge. mES cells showed no release of detectable IL-6, TNF- $\alpha$ , or IFN- $\beta$  proteins (Figure 13).

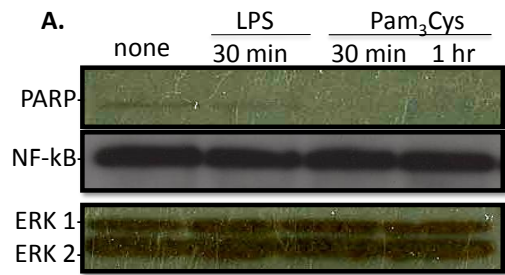
In contrast, we did detect TLR-2-ligand enhancement of the mRNA expression for IL-6 (Figure 14 A), TNF- $\alpha$  (Figure 14 B.) and IFN- $\gamma$  (Figure 14 C). Previous reports have shown that TNF- $\alpha$ , and IL-6 were not detected in normal media of the mES cell but were detected in mES cells that have undergone apoptosis (Guo, Graham-Evans et al. 2006). Next we treated the E14 mES cells with the ligands for TLR-2, TLR-3, and TLR-4 and we measured release of a number of cytokines and chemokines noted in Table 3. We did not detect enhanced release of cytokines or chemokines see e.g. Table 4. Samples were assessed for cytokine and chemokine production, and sensitivity for each are denoted at charlesriver.com. (Charles River Molecular Diagnostic Laboratory, Wilmington, MA). 100  $\mu$ L of media from E14 mESCs in the presence and absence of TLR-2 ligands were sent Charles River Molecular Diagnostics Laboratory to measure 58 different cytokines and chemokines by ELISA (Table 3).

Next we wanted to determine if downstream targets to NF- $\kappa$ B would become activated. We looked for BCL-2 expression after 12 and 24 hours of TLR-2 stimulation (Figure 14 D). We saw an increase in BCL-2 expression after 24 hours in the presence of TLR-2 ligand, showing that NF- $\kappa$ B was functional in mES cells after 24 hours of ligand treatment. Expression of cytokines by the E14 mES cells showed minimal expression when compared to Raw264.71 macrophage- like cell line, the positive control after 12 hours (Figure 14 E, F, and G).

Figure 9. Pam<sub>3</sub>Cys enhances NF-κB nuclear translocation in mES cells. 1x 10<sup>6</sup> mESCs were plated in DMEM media in the presence of LIF. Once the cells reached confluence, 10 μg/mL Pam<sub>3</sub>Cys or 1 μg/mL of LPS was added directly into the media. mES cells were harvested at 30 minutes or 1 hour and nuclear and cytoplasmic proteins were extracted. The cytoplasmic (A and C) and the nuclear (B and D) were quantified, run on SDS-Page gel and blotted with an anti NF-κB p65, PARP or total ERK1/2 antibodies, The autoradiographs were quantified by densitometry and shown the average results of 3 separate experiments (C and D).



### Cytoplasmic Fraction



### Nuclear Fraction

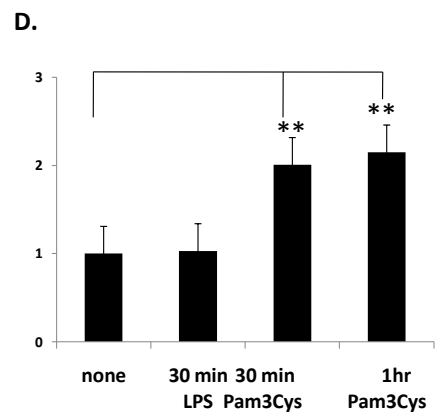
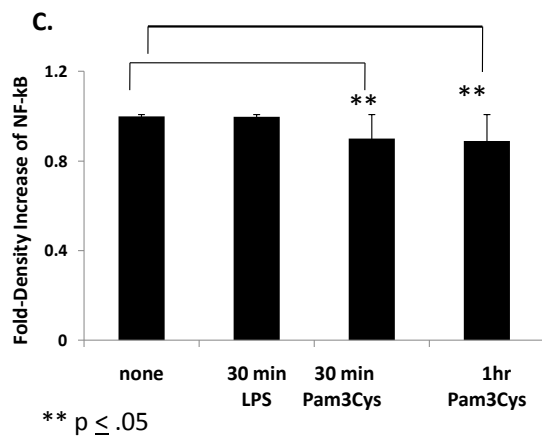
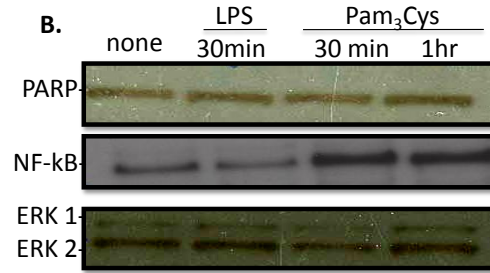
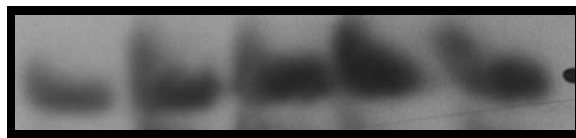


Figure 9

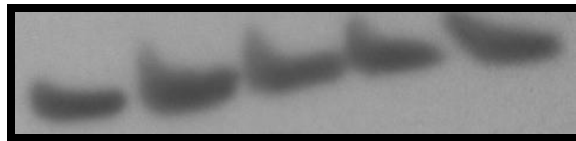
Figure 10. MyD88 is constituitvely expressed in mESCs with and without TLR-2 ligand activation for 15 minutes to 4 hours.  $\beta$ -actin was used as a loading control. Results shown are for one of two experiments with similar results.

Pam3Cys  
10.0 ug/mL

*4 hr*    *1 hr*    *30 mins*    *15 mins*    *Control*



-35kb MyD88



-45kb  $\beta$ -actin

Figure 10

Figure 11. TLR-2- activation in mESC cause phosphorylation of IKK- $\alpha/\beta$  at 15 and 30 minutes with the ligand for TLR-2 and TLR-3. Total IKK and  $\beta$ -actin was used as a loading control for experiments. Shown are the results of 1 of two reproducible experiments.

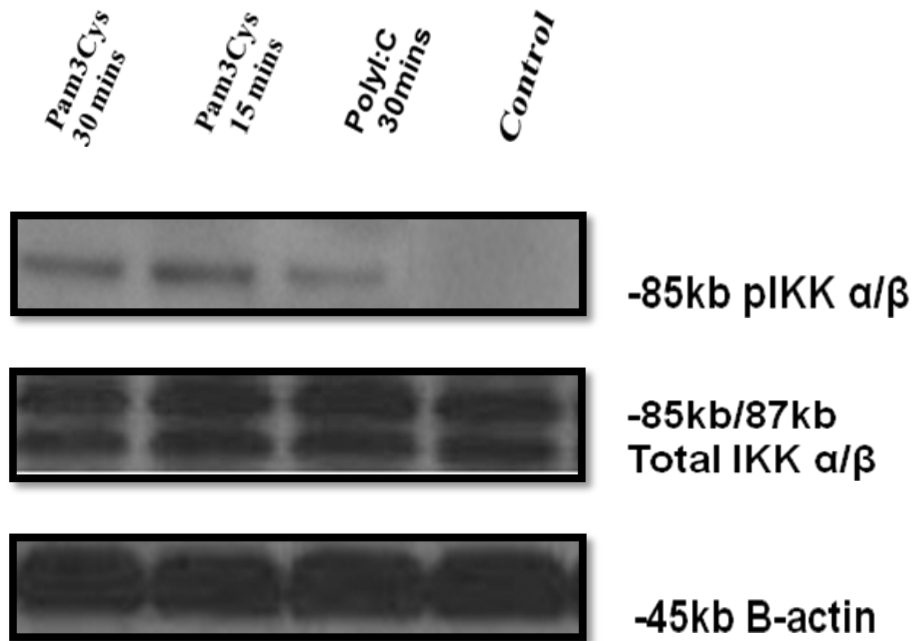


Figure 11

Figure 12. Pam<sub>3</sub>Cys enhances ES cell numbers on Day 3, 4, and 5 in the presence of LIF. A. ES cells were treated with Pam<sub>3</sub>Cys at varying doses for up to 96 hours. Significant changes are noted when compared to control for each day. B. Total cell number for each day with and without TLR-2 stimulation. C. Day 2 and Day 3 proliferation in the presence and absence of T.25 a blocking antibody for TLR-2 receptor with and without ligand. D. Day 3 proliferation assay in the presence and absence of TLR-2 ligand with and without blocking TLR-2 antibody (T.25). Results shown are the average of 3 experiments with each experiments performed in triplicate. p value  $\leq$  .05.

A.

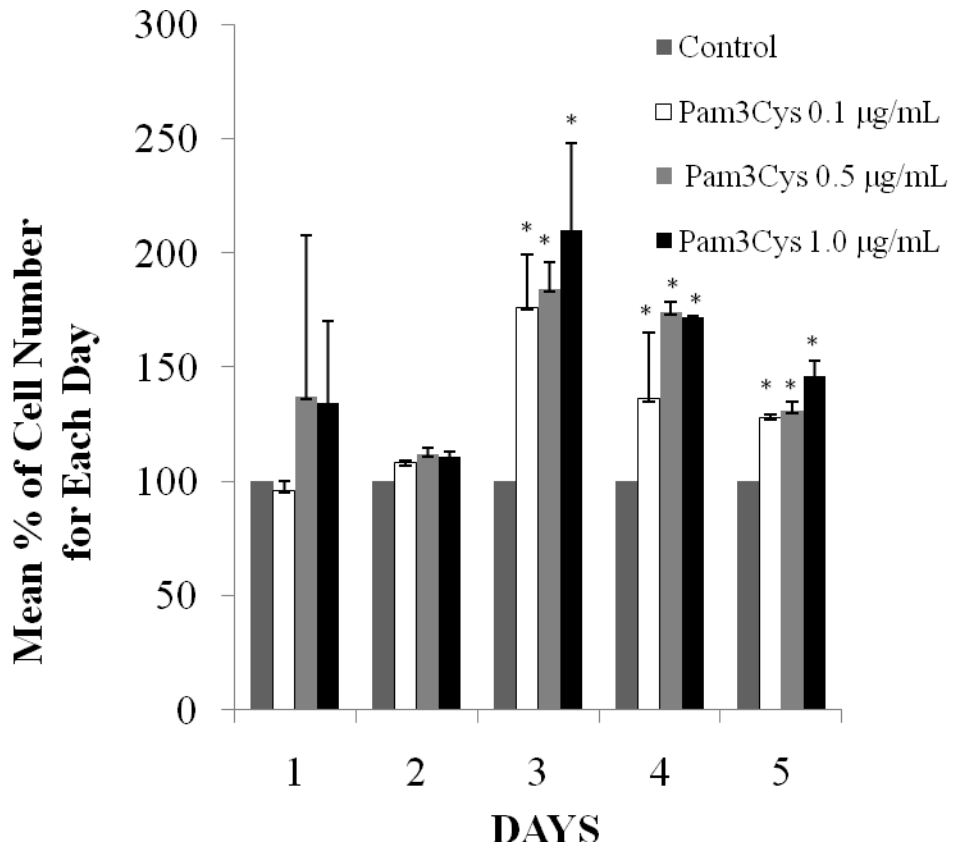


Figure 12

B.

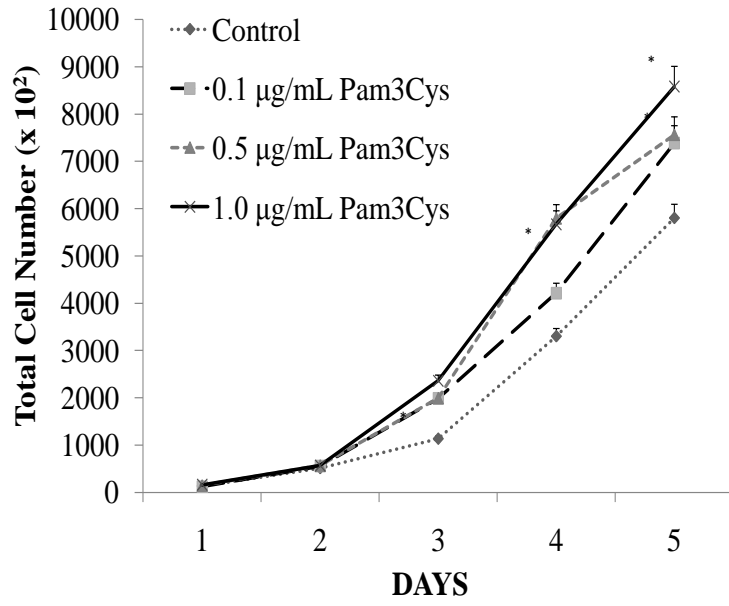


Figure 12



C.

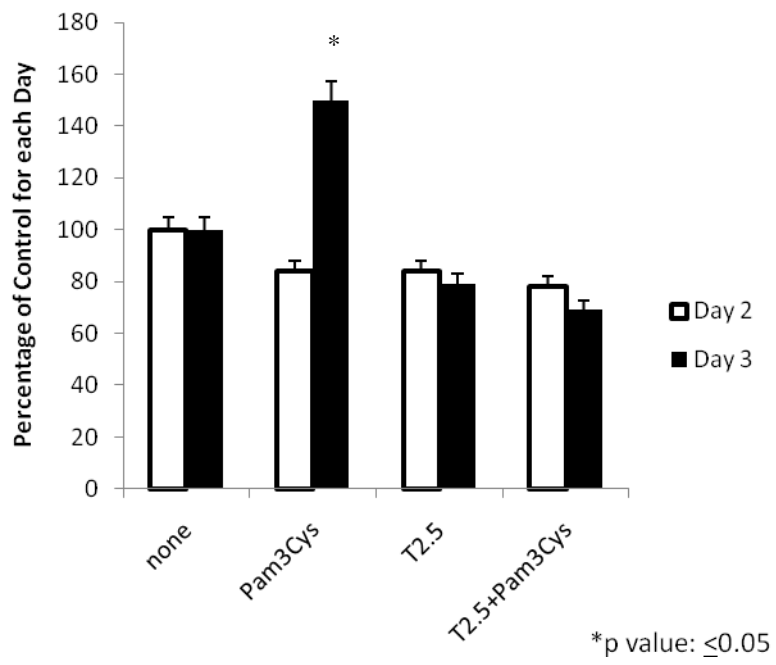
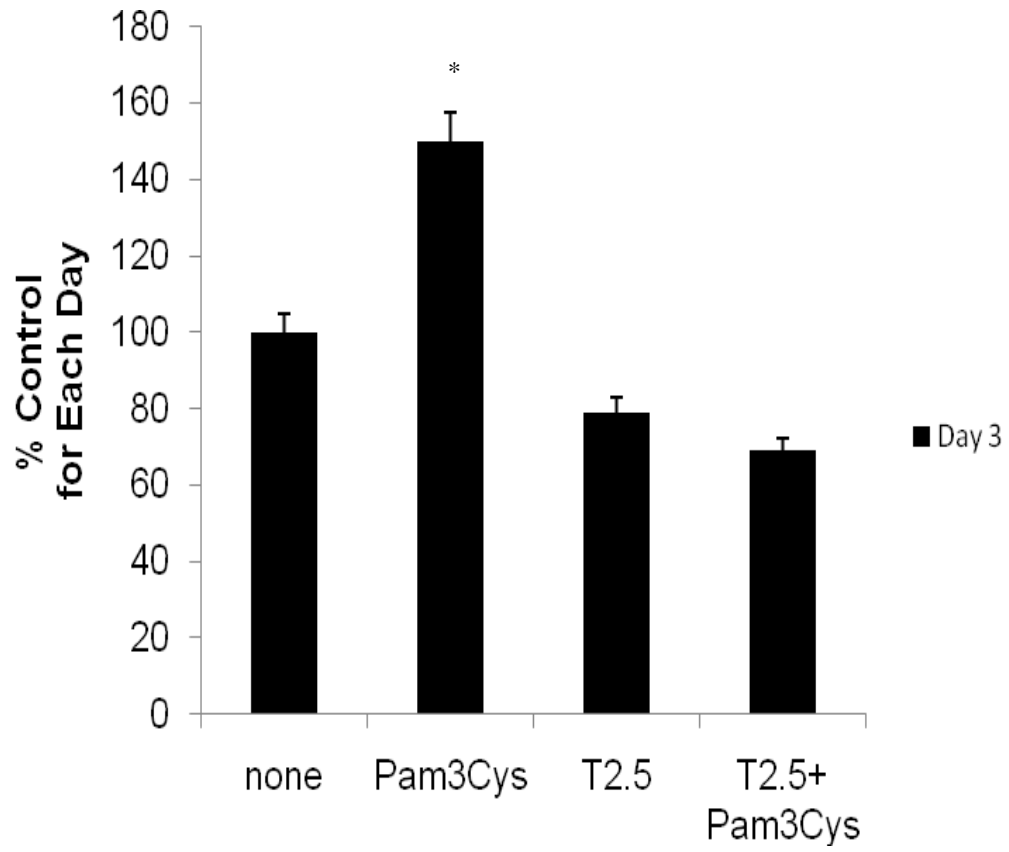


Figure 12

D.



\*p value  $\leq 0.05$

Figure 12

Figure 13. mESCs do not secrete various cytokines and chemokines following stimulation with TLR ligands, as assessed by ELISA. mES cell cultures were treated with various TLR ligands: 75µg/mL Poly (I:C), 10µg/mL LPS, or 10µg/mL Pam<sub>3</sub>Cys, as noted, for 24 hours prior to harvesting the conditioned medium. While cytokine release in response to TLR ligands was detected in media conditioned by Raw264.71 cells, it was not detected (ND) in media conditioned by mES cell line E14. These are results each of one experiment performed in triplicate.

### A. IFN- $\beta$

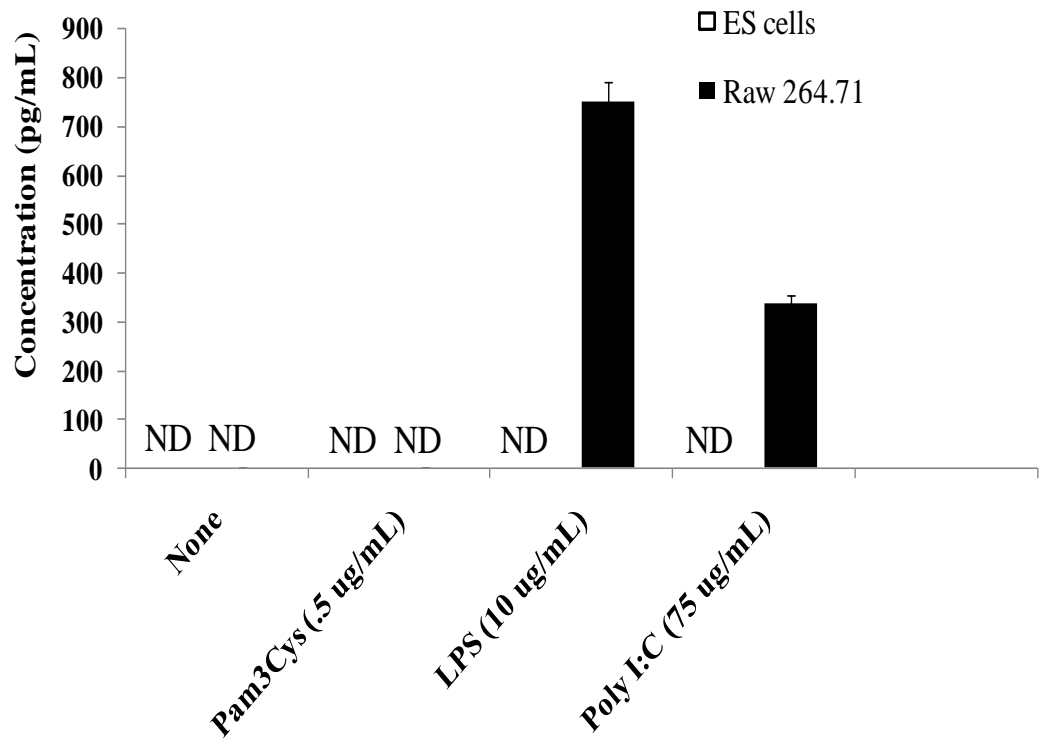


Figure 13

**B. TNF- $\alpha$**

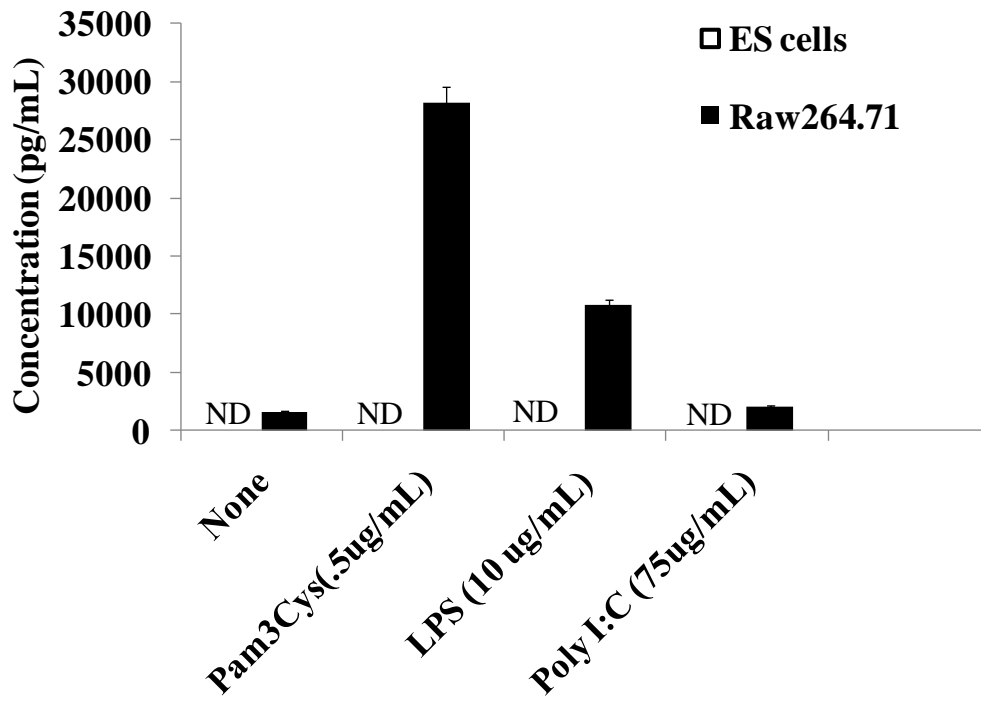


Figure 13

**C. IL-6**

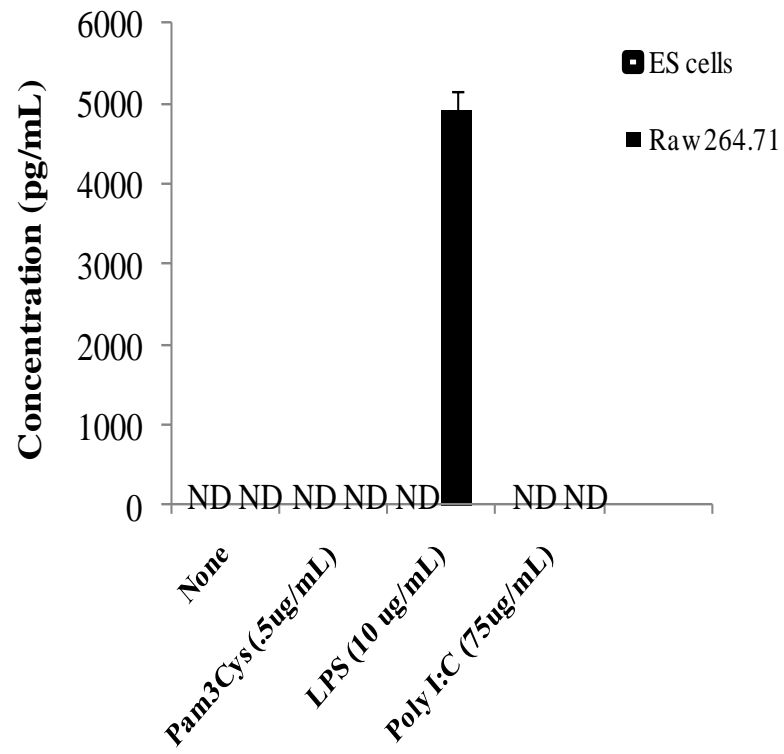
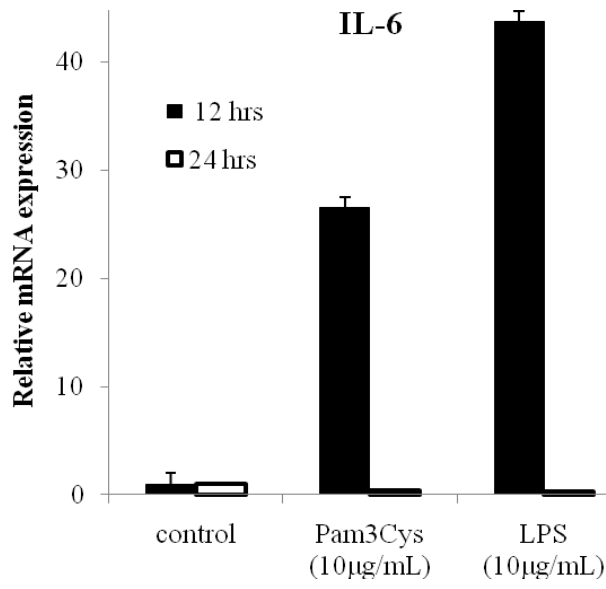


Figure 13

Figure 14. qRT-PCR for A. IL-6 B. TNF- $\alpha$ , and C. INF- $\gamma$  at 12 and 24 hrs after TLR-2 and TLR-4 ligand stimulation on E14 mESCs. D. BCL-2 protein expression after TLR-2 activation for 24 hours. E. IL-6, F. TNF- $\alpha$ , and G. INF- $\gamma$  at 12 hours after TLR-2 and TLR-4 ligand stimulation on Raw264.71 mouse macrophage like cells. These are results of two experiments. Each performed in triplicate.

A.



B.

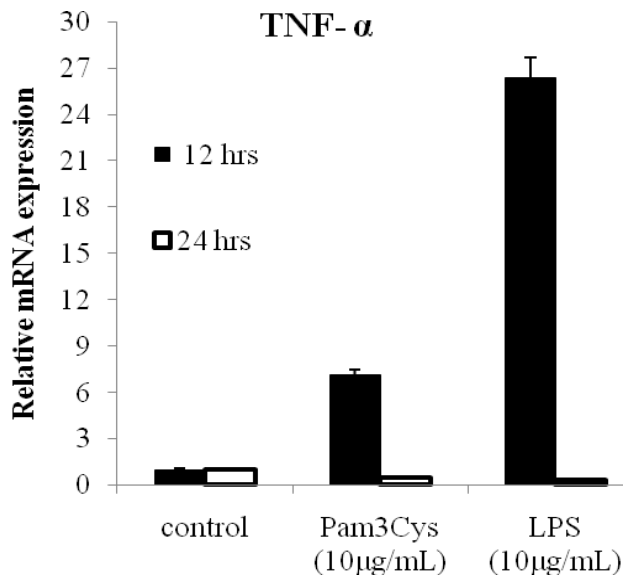
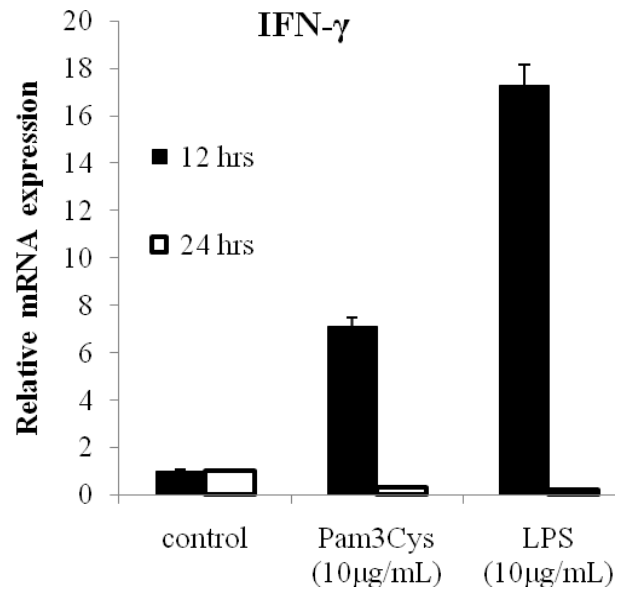


Figure 14



C.



D.

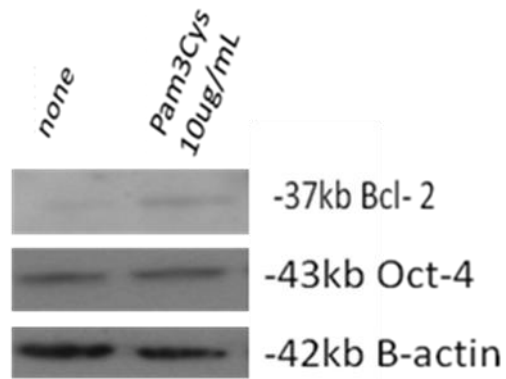
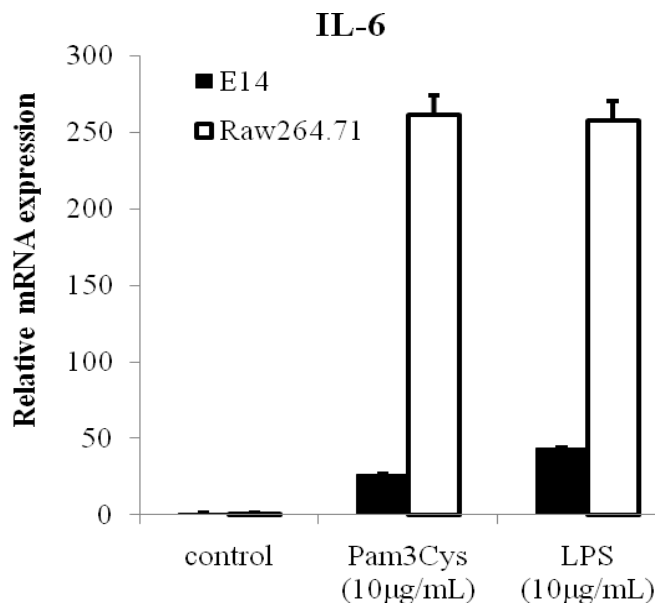


Figure 14

E.



F.

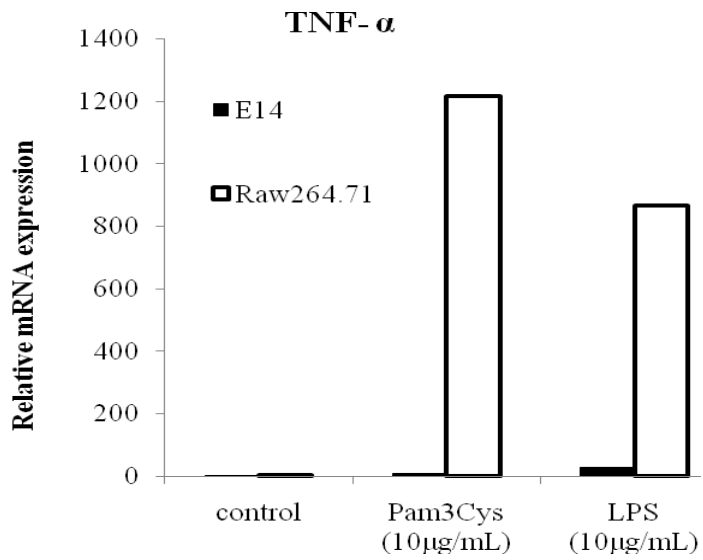


Figure 14

G.

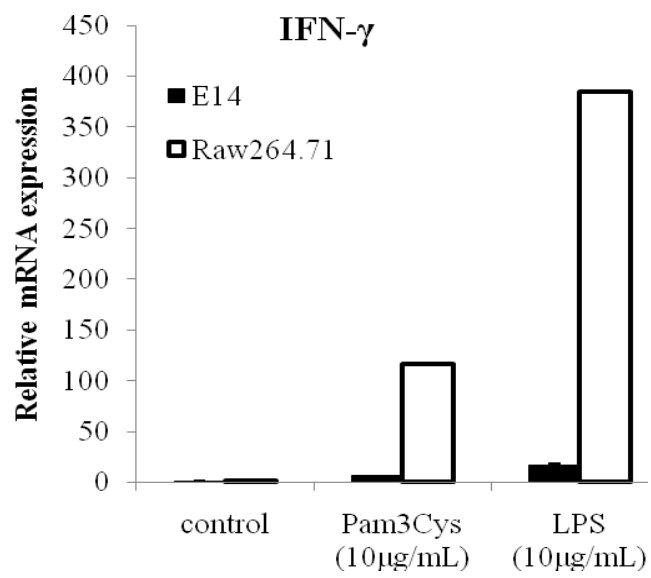


Figure 14

**Table 4. Other Cytokines, Chemokines, and Growth Factors Assessed by ELISA**

|   |   |
|---|---|
| Apolipoprotein A1 (Apo A1)                                  | Macrophage-colony stimulating factor (M-CSF)                              |
| C-Reactive Protein (CRP)                                    | Macrophage derived cytokine (MDC)   |
| CD40  | Macrophage inflammatory protein 1 $\alpha$ (MIP-1 alpha)                  |
| CD40 ligand   | Macrophage inflammatory protein 1 $\beta$ (MIP-1 beta)                    |
| Endothelin -1   | Macrophage inflammatory protein 1 $\gamma$ (MIP-1 gamma)                  |
| Eoxtaxin  | (MIP-2)   |
| Epidermal Growth Factor                                     | Macrophage inflammatory protein 3 $\beta$ (MIP-3 beta)                    |
| Factor VII  | Matrix metalloproteinase-9 (MMP 9)  |
| Fibrinogen  | Monocyte chemoattractant protein -1(MCP-1)                                |
| Fibroblast growth factor basic (FGF-basic)                  | Monocyte chemoattractant protein -3(MCP-3)                                |
| Fibroblast growth factor -9 (FGF-9)                         | Monocyte chemoattractant protein- 5(MCP-5)                                |
| Granulocyte chemotactic protein 2 (GCP-2)                   | Myeloperoxidase   |
| Granulocyte macrophage-colony stimulating factor (GM-CSF)   |   |
| Glutathione S-transferase $\alpha$ (GST-alpha)              | Myoglobin   |
|   | Oncostatin M (OSM)  |
| Haptoglobin   | Regulation upon activation, normal T-cell expressed and secreted (RANTES) |
| Immunoglobulin A (IgA)                                      | Serum Amyloid P   |
| Inducible Protein-10 (IP-10)                                | Serum glutamic-oxaloacetic transaminase (SGOT)                            |
| Insulin   | Stem Cell Factor (SCF)  |
| Interferon-gamma (IFN- $\gamma$ )                           | Thrombopoietin (TPO)  |
| IL-1 $\alpha$ (interleukin -1 alpha)                        | Tissue inhibitor of metalloproteinase type - 1 (TIMP1)                    |
| IL-1 $\beta$ (interleukin-1 beta)                           | Tissue Factor   |
| IL-2 (interleukin-2)  | Tumor Necrosis Factor-alpha (TNF- $\alpha$ )                              |
| IL-3 (interleukin-3)  | vascular cell adhesion molecule -1 (VCAM-1)                               |
| IL-4 (interleukin-4)  | Vascular endothelial cell growth factor (VEGF)                            |
| IL-5 (interleukin 5)  | Von Willebrand Factor (vWF)   |
| IL-6 (interleukin 6)  | Leptin  |
| IL-7 (interleukin 7)  | Leukemia inhibitory factor (LIF)  |
| IL-10 (interleukin 10)                                      | Lymphotactin  |
| IL-11(interleukin 11)                                       |   |
| IL-12p70 ( interleukin- 12p70)                              |   |
| IL-17 (interleukin 17)                                      |   |
| Melanoma growth stimulatory activity protein (KC/GRO alpha) |   |

**Table 5. Effects of Toll Like Receptor ligands on the capacity of E14 cells to release protein**

| <b>Increased protein release after ligand stimulation</b> | <b>TLR2 challenge (pg/mL)</b> | <b>TLR3 challenge (pg/mL)</b> | <b>TLR4 challenge (pg/mL)</b> | <b>Conditioned Media (pg/mL)</b> |
|---|-------------------------------|-------------------------------|-------------------------------|----------------------------------|
| <b>CRP</b>  |                               | 2433±513                      |                               | 2300±265                         |
| <b>EGF</b>  |                               | 5.1± 0.30                     | 5.1± 2                        | 4.7±0.81                         |
| <b>Fibronogen</b>   | 12000± 1000                   |                               | 13000±1000                    | 10500±1323                       |
| <b>IL-17</b>  | 2.0±0.1                       |                               |                               | 1.5±0.25                         |
| <b>IFN-β</b>  | 3±1.1                         |                               |                               | 2±0.4                            |
|   | 223333±305                    |                               |                               |                                  |
| <b>Haptoglobin</b>  | 50                            |                               | 230000± 4826                  | 21667±57258                      |
| <b>GM-CSF</b>   |                               | 0.23±0.06                     | 0.24±0.06                     | 0.19±0                           |
| <b>GCP-2</b>  | 1.8± 0.83                     |                               |                               | 1.7±0.4                          |
| <b>IL-4</b>   | 7.1±1.15                      |                               |                               | 5.8±0                            |
| <b>IP-10</b>  | 15±8                          |                               |                               | 13± 8                            |
| <b>MCP-1</b>  | 4±0.8                         |                               |                               | 2.4±0.8                          |
| <b>MCP-3</b>  | 6±0.6                         |                               |                               | 4.2±0.2                          |
| <b>KC/GRO-α</b>   | 9.1±5                         |                               |                               | 2.4±0.7                          |
| <b>(SAP)</b>  |                               | 8933±3153                     |                               | 8867±2650                        |
| <b>IL-6</b>   | 0.7±0.6                       |                               |                               | 0.06±0.5                         |
| <b>IL-12p70</b>   | 16±8                          |                               |                               | 12±7                             |
| <b>IL-17</b>  | 2± 0.1                        |                               |                               | 1.5± 0.25                        |
| <b>Lymphotactin</b>                                       | 4.13±0.5                      |                               |                               | 3.93±1.5                         |
| <b>MIP-1 alpha</b>  | 81±12                         | 88±0                          | 81±12                         | 76±29                            |
| <b>SGOT</b>   | 8000±13856                    | 12333±21362                   | 20000±3606                    | nd                               |
| <b>MIP-2</b>  | 2.4±0.1                       |                               | 2.2±0.1                       | 1.9±0.5                          |
| <b>VEGF</b>   | 673±250                       |                               | 591±279                       | 578±500                          |
| <b>FGF-9</b>  | 163±23                        |                               | 130±52                        | 118±56                           |
|   |                               |                               |                               | 256667±15044                     |
| <b>IgA</b>  |                               | 28333±90738                   |                               | 3                                |
| <b>IL-1 alpha</b>   | 13±2                          |                               |                               | 12.6±2.5                         |

Table shows average level of cytokine expression +/- SD (pg/mL).

### **mESCs maintain an un-differentiated state after TLR-2 activation in the presence of LIF**

mESCs were treated with TLR-2 and TLR-4 ligand for up to 3 days. We observed that TLR-2 and TLR-4 ligands did not change the expression of undifferentiated markers Oct-4, SSEA-1, KLF, and Sox-2, when compared to cells that were not treated with TLR ligands (Figures 15-18). Thus, TLR2 ligand- TLR2 interactions in the presence of LIF do not appear to trigger differentiation of mES cells (Figures 15-18), although more rigorous methods of assessing the non-differentiated of ES cells, e.g. *in vivo*/teratoma formation will be needed to conclusively determine this.

### **Pam3Cys enhances and LPS decreases mES cell survival upon delayed addition of serum**

mES cells were plated in the presence of LIF, but with delayed addition of serum for 0, 1, 2 and 4 days and in the absence or presence of Pam<sub>3</sub>Cys, the ligand for TLR-2, LPS, or SDF-1. SDF-1 was used as a positive control because our lab has shown that SDF-1 caused an increase in survival of mESCs in the presence of LIF with delayed addition of serum (Guo, Graham-Evans et al. 2006). As shown in Figure 19A, SDF-1 showed a significant increase in cell survival compared to cells that were not treated and also compared to cells treated for each day with 0.1 µg/mL, 1.0 µg/mL, and 10 µg/mL of TLR-2 ligand. mES cells treated with the ligand for TLR-2 showed a dose-dependent increase in survival when compared to cells that were not treated for each day. Pam<sub>3</sub>Cys resulted

in decreased apoptosis (Figure 19 B) interestingly, LPS triggered a decrease in survival (Figure 19 A) and an increase in apoptosis (Figure 19 B).

Figure 15. Surface expression of stem cell marker SSEA-1 after TLR-2 and TLR-4 ligand stimulation in wild-type E14 mESCs in the presence of LIF. SSEA-1 protein levels were analyzed by flow analysis. These are one of three experiments showing the same expression levels.



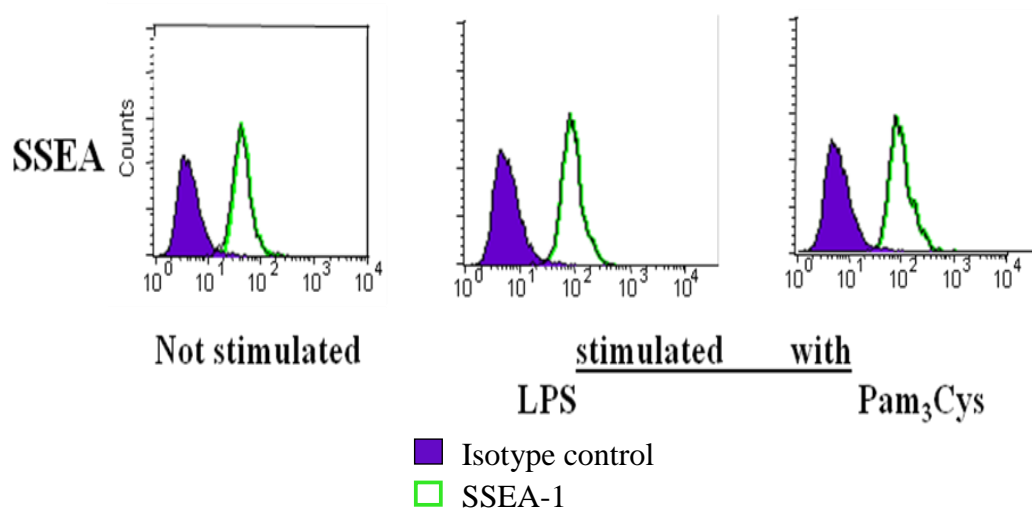


Figure 15

Figure 16. Intracellular expression of stem cell marker Oct 3/4 after TLR-2 and TLR-4 ligand stimulation in wild-type E14 mESCs in the presence of LIF. Oct 3/4 protein levels were analyzed by flow analysis. These are one of three experiments showing the same expression levels.

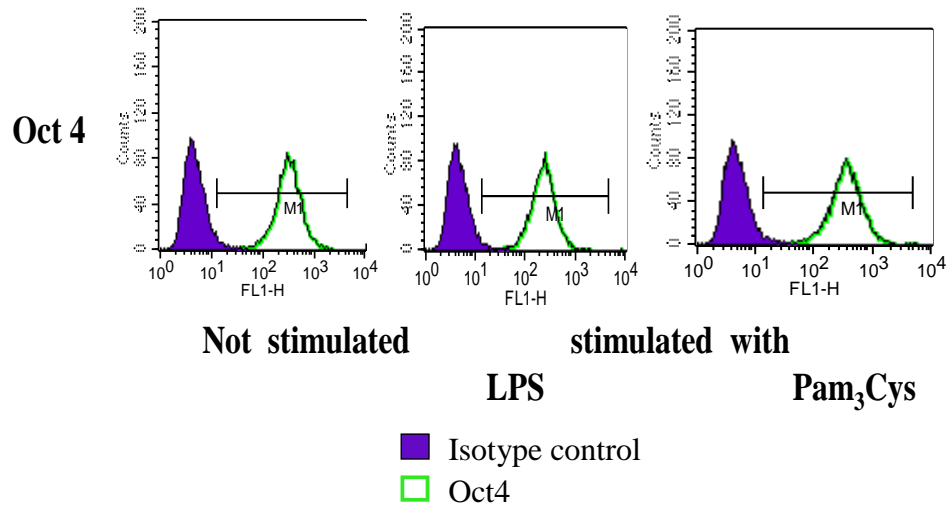


Figure 16

Figure 17. Intracellular expression of stem cell marker KLF-4 after TLR-2 and TLR-4 ligand stimulation in wild-type E14 mESCs in the presence of LIF. KLF-4 protein levels were analyzed by flow analysis. These are one of three experiments showing the same expression levels.

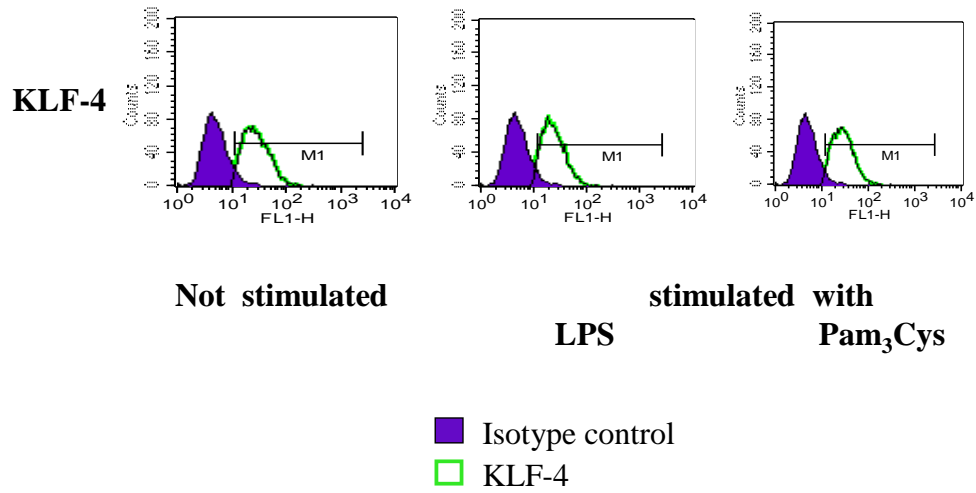


Figure 17

Figure 18. Intracellular expression of stem cell marker Sox 2 after TLR-2 and TLR-4 ligand stimulation for wild-type E14 mESCs in the presence of LIF. SOX-2 protein levels were analyzed by flow analysis. These are one of three experiments showing the same expression levels.

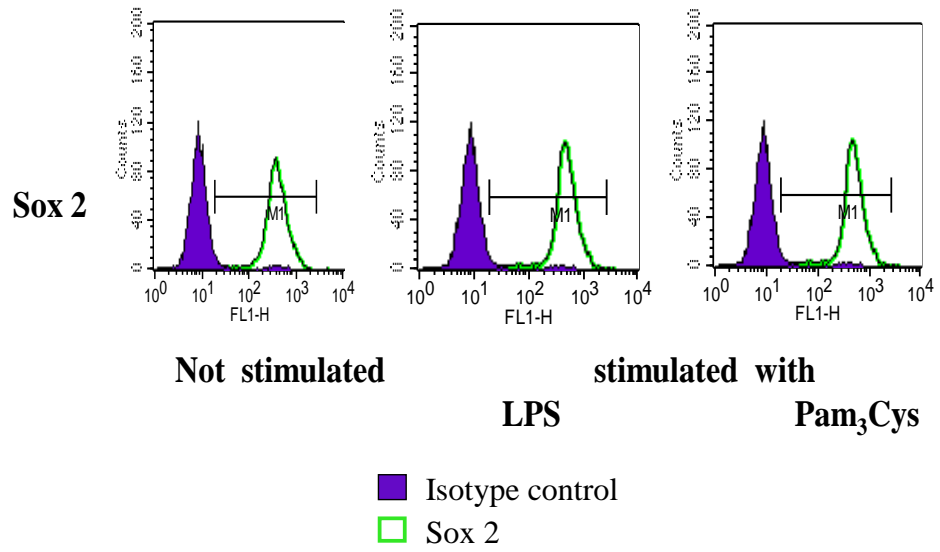


Figure 18

Figure 19. Influence of TLR-2 on survival of mES cell colony formation subjected to delayed addition of serum (A), and of apoptosis of mES cells in suspension culture as assessed by flow cytometry. The percent Annexin V-positive cells were compared to the controls of that specific day  $*p \leq 0.05$ . (B). mES cells were cultured without serum, and serum added at day 0, 1, 2, and 4 after the start of culture. Colonies formed by ESCs were counted 7 days after addition of serum. Results shown are the average of three experiments, each assessed in triplicate. Experimental points were compared with the time 0 of the control group: (\*)  $p \leq 0.05$ .



A.

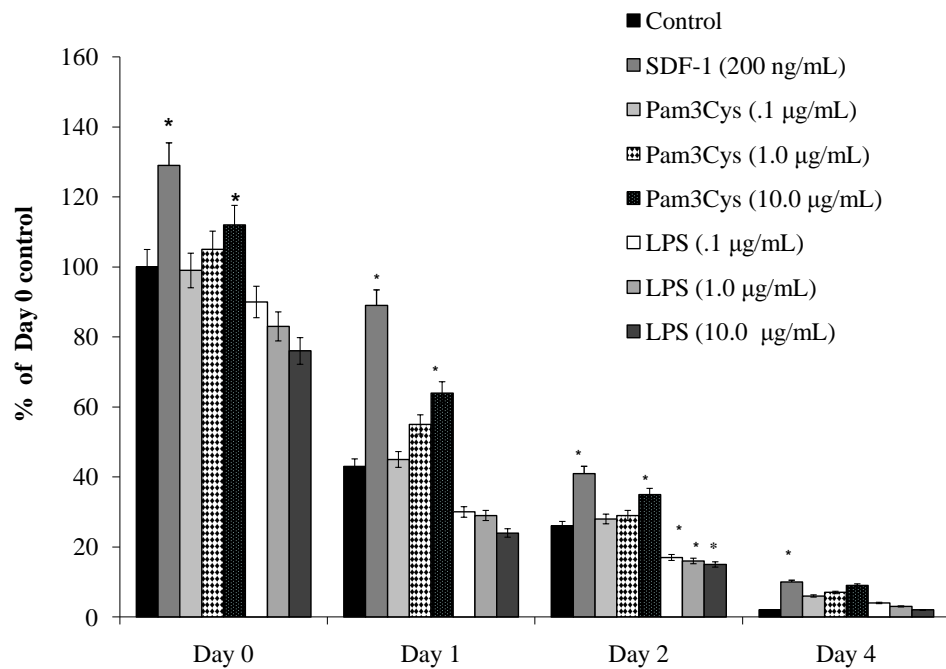


Figure 19

**B.**

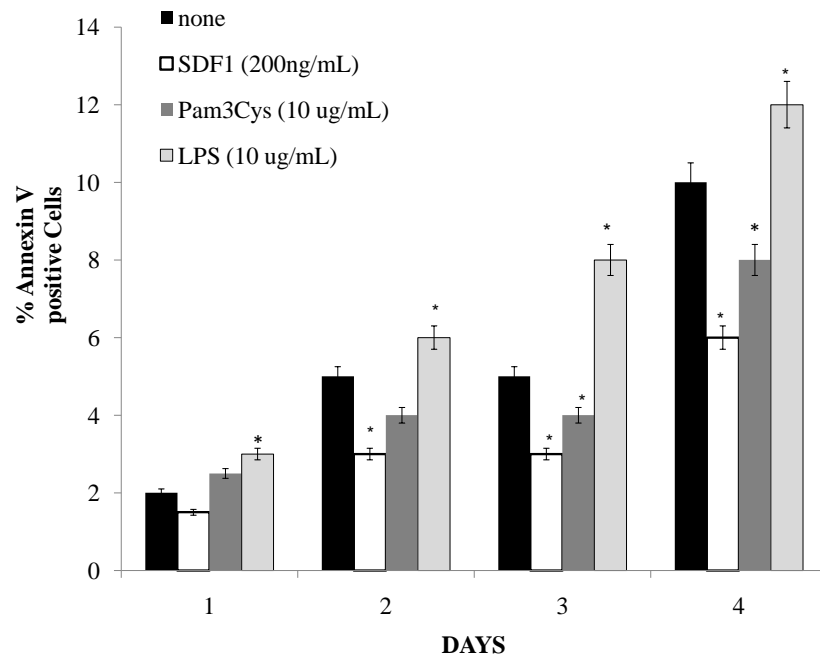


Figure 19

## RESULTS

### Part II

#### mES Cell Differentiation

##### **TLR-2 and TLR-4 are expressed in Embryoid Bodies (EBs)**

TLR-2 and TLR-4 protein expression was examined by flow analysis after removal of LIF. While we detected expression of TLR-2 and TLR-4 expression on the surface of mES cells after withdrawal of LIF, Pam<sub>3</sub>Cys did not influence TLR-2 expression (Figure 20) and had only minimal effects on TLR-4 expression (Figure 21).

##### **In the absence of LIF, TLR2 activation caused an increase in expression of Oct-4 and Sox-2 but not KLF-4 and SSEA-1 expression.**

We determined if Day 4 and Day 6 EBs derived from mESCs in the absence of LIF but in the presence of TLR-2 ligand at 10 µg/mL expressed non-differentiated markers Oct-4, Sox-2, KLF-4, and SSEA-1. As shown in Figures 22-25 respectively, mESCs in the absence of LIF, do not express Sox-2, SSEA-1, KLF-4, and Oct-4. In the absence of LIF and the presence Pam<sub>3</sub>Cys, there was a modest increase in expression of Sox 2 in Day 6 EBs (Figure 22), no effect on expression of cell surface marker SSEA-1 on Day 4 or Day 6 EBs (Figure 23), essentially no effect on expression of KLF in Day 4 or Day 6 EBs (Figure 24), and only a very modest increase in Oct 4 expression in day 6 EBs with 20

$\mu\text{g/mL}$  Pam<sub>3</sub>Cys (Figure 25). Thus from the flow data, there is little evidence other than for Sox-2 (Figure 22) and Oct-4 (Figure 25) expression that Pam<sub>3</sub>Cys has effects on modifying differentiation of mES cells after removal of LIF.

Figure 20. Pam<sub>3</sub>Cys does not modify expression of TLR-2 after removal of LIF. Flow Cytometry results are shown for Day 6 EBs. These are one of three experiments showing the same expression levels.

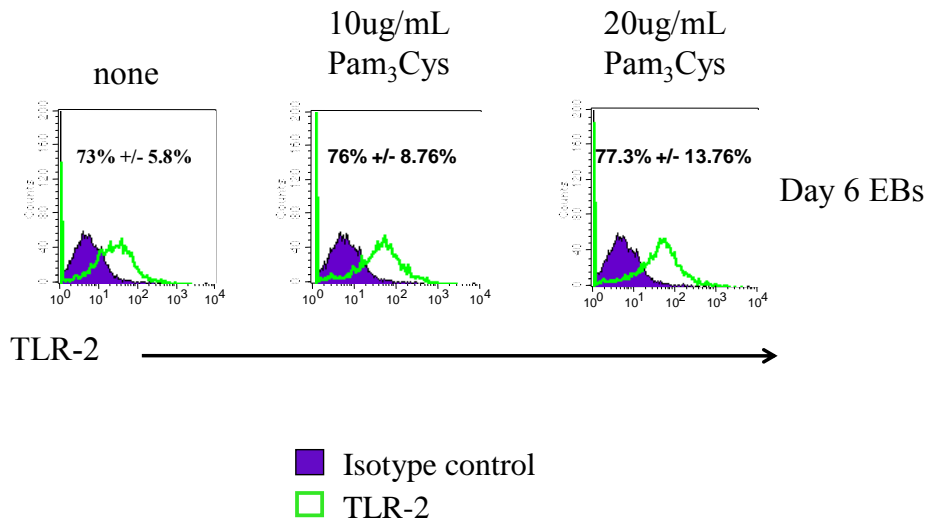


Figure 20

Figure 21. Pam<sub>3</sub>Cys has minimal to no effects on expression of TLR-4 after removal of LIF. Flow Cytometry results are shown for day 4 and 6 EBs. These are one of three experiments showing the same expression levels.

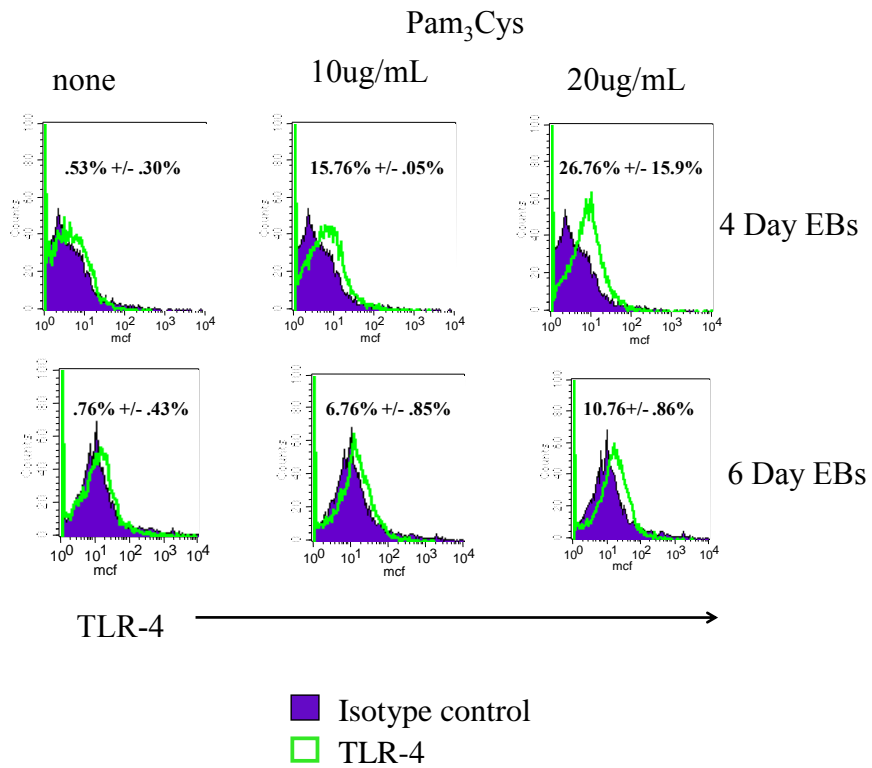


Figure 21



Figure 22. Flow analysis of Sox2 expression for Day 4 and Day 6 EBs in the absence of LIF but in the presence of Pam<sub>3</sub>Cys for undifferentiated markers Sox 2. These are one of three experiments showing the same expression levels.

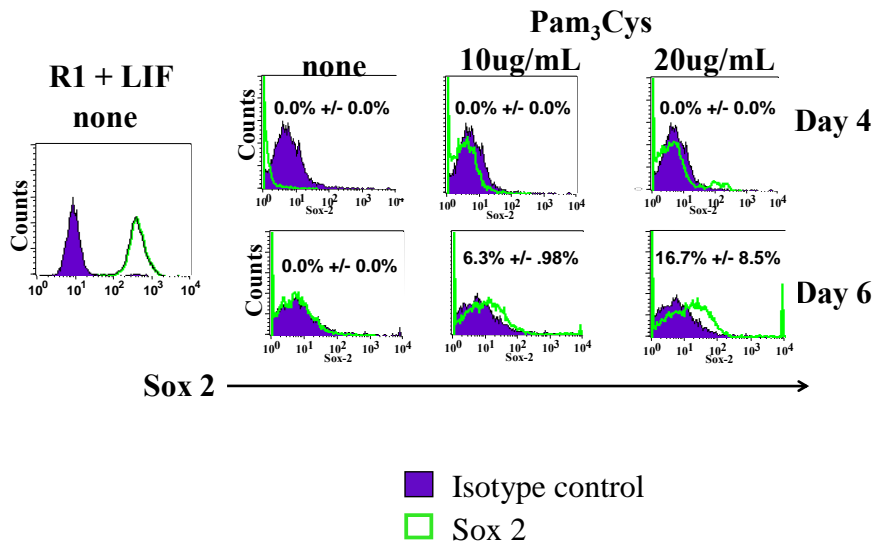


Figure 22

Figure 23. Flow analysis of SSEA-1 Expression for Day 4 and Day 6 EBs in the absence of LIF but in the presence Pam<sub>3</sub>Cys. These are one of three experiments showing the same expression levels.

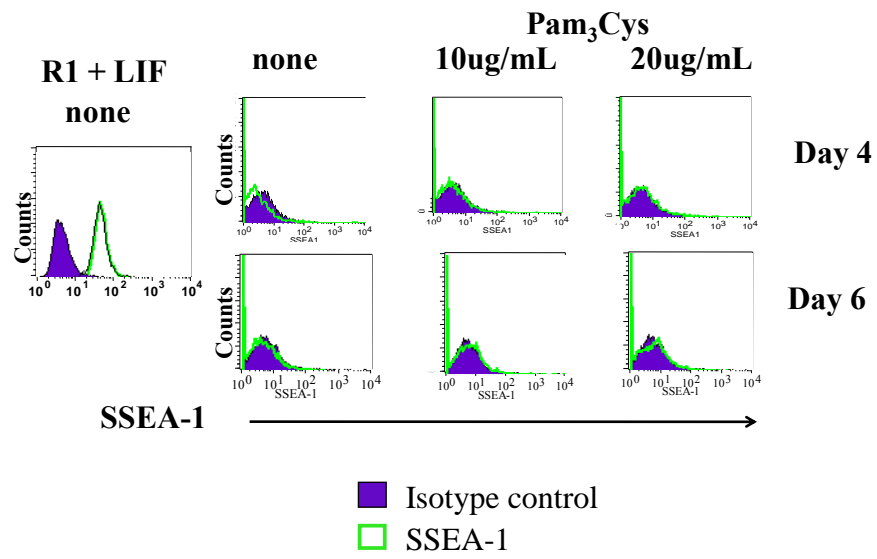


Figure 23

Figure 24. Flow analysis of KLF4 expression for Day 4 and Day 6 EBs in the absence of LIF but in the presence of Pam<sub>3</sub>Cys. These are one of three experiments showing the same expression levels.

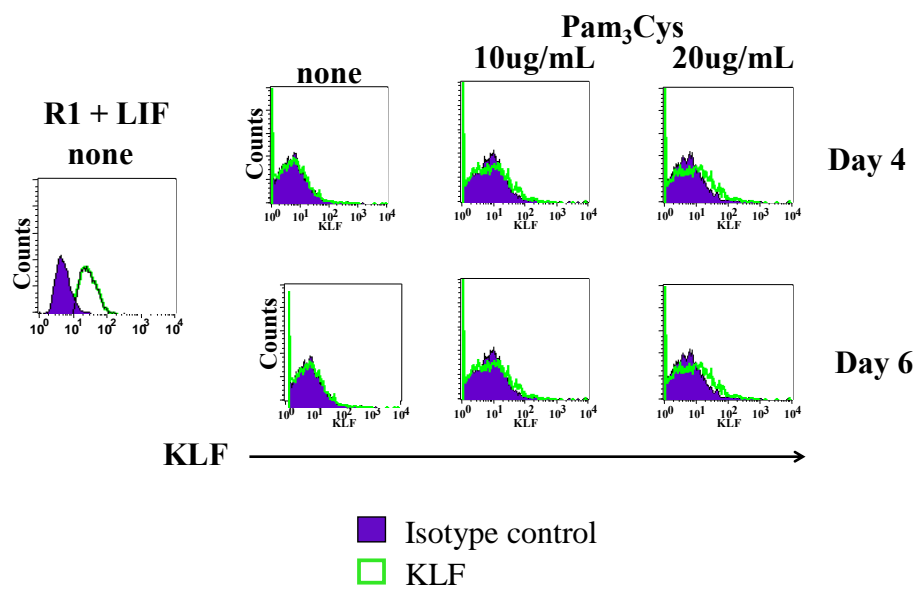


Figure 24

Figure 25. Flow analysis of Oct4 expression for Day 4 and Day 6 EBs in the absence of LIF but in the presence of Pam<sub>3</sub>Cys. These are one of three experiments showing the same expression levels.

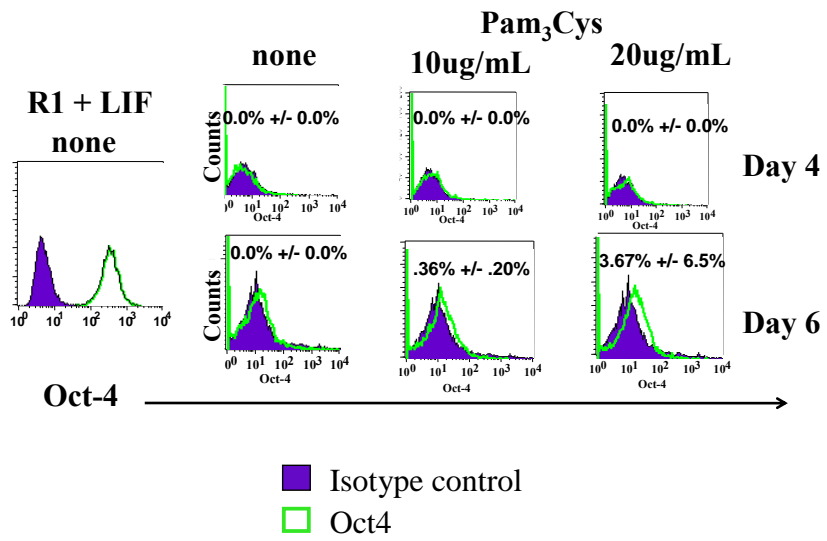


Figure 25



**Oct-4 levels, as assessed by Western blot, were maintained and a decrease in p-ERK in Day 6 EBs compared to EBs not treated with TLR-2 ligand**

mES cells were plated in the absence of LIF for 6 days, but in the presence of Pam<sub>3</sub>Cys. As shown in Figure 26, Oct-4 and p-MEK were assessed by western blot analysis. Oct-4 was highly expressed in R1 cells in the presence of LIF. This was used as a positive control compared to cells cultured in the absence of LIF for 6 days. In contrast to the flow data showing little to no expression of undifferentiated cell marker Oct-4, in the presence of Pam<sub>3</sub>Cys and absence of LIF we saw an increase in Oct-4 protein expression by Western blot analysis when compared to cells that were not treated with Pam<sub>3</sub>Cys (Figure 26 A). Next, we checked for p-ERK expression in these cells (Figure 26 B). Removal of LIF resulted in enhanced expression of phosphorylated ERK, but this expression level was greatly decreased in the presence of Pam<sub>3</sub>Cys.  $\beta$ -actin and total-ERK were used as loading controls (Figure 26 C and D).

Figure 26. mES cell line R1 treated with Pam<sub>3</sub>Cys, in the absence of LIF show lessened down regulation of Oct 4 expression but decreased expression of phosphorylated ERK (42kb) compared to cells in the absence of Pam<sub>3</sub>Cys. (A) Oct-4 (B) ERK phosphorylation. mES cells were grown to confluency and induced to differentiate by the removal of LIF. (C) Total ERK and (D)  $\beta$ -actin antibody to confirm equal loading. Representative data from two independent experiments are shown. These are one of three experiments showing the same expression levels.

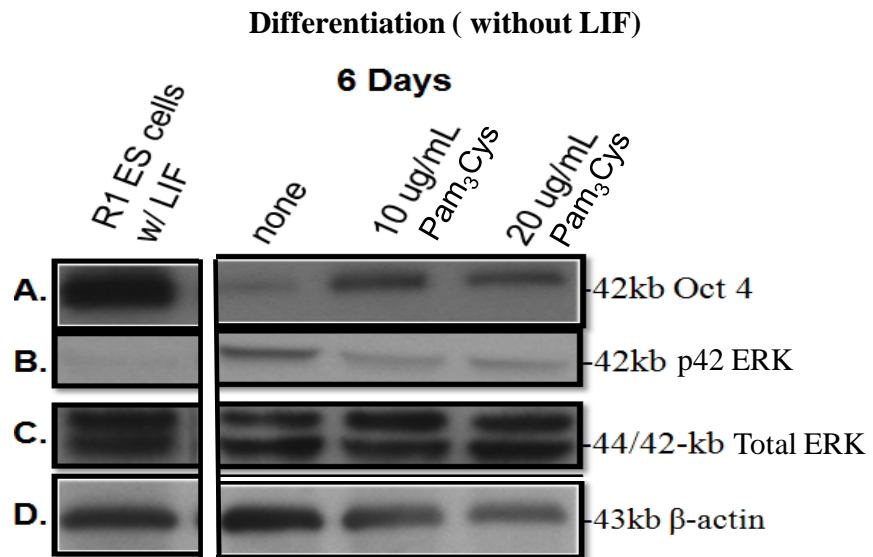


Figure 26

## DISCUSSION

### **Experiments in the presence of LIF**

TLRs are critical components of the adaptive immune response (Takeuchi, Hoshino et al. 1999; Underhill, Ozinsky et al. 1999; Hoebe, Du et al. 2003; Honda, Murao et al. 2003; Lund, Sato et al. 2003; Diebold, Kaisho et al. 2004; Heil, Hemmi et al. 2004; Krieg, Efler et al. 2004; Lebon, Adler et al. 2004). These receptors are expressed on hematopoietic stem and progenitor cells (Nagai, Garrett et al. 2006), as well as other pluripotent cell types (Rolls, Shechter et al. 2007) including mesenchymal stem/stromal cells (Pevsner-Fischer, Morad et al. 2007) and are selectively expressed on the mES cell line, D3 (Lee, Hong et al. 2009). While it is not entirely clear why mES cell lines would express TLRs, mES cell lines have been shown to express certain cytokine receptors, as well as produce cytokines that act on mES cell lines as well as on hematopoietic progenitor cells (Guo, Hango et al. 2005; Guo, Graham-Evans et al. 2006). Since our original studies on mES cell lines (Guo, Hango et al. 2005; Guo, Graham-Evans et al. 2006), we have been interested in a potential role for TLRs and their ligands in mESC line function. Our present study addresses our experiments on the expression of TLRs in the E14, CGR8, and R1 mES cells and the functional activities of Pam<sub>3</sub>Cys, a ligand for TLR-2, and to a lesser extent, the activity of LPS on the E14 mES cell line. These studies significantly extend those of others (Lee, Hong et al. 2009) with regards to TLR expression in mES cell lines, and not unexpectedly point up some subtle differences in expression of TLRs in different mES cell lines.

We found that the E14 mES cell line growing in the presence of LIF expresses mRNA (as assessed by semi-quantitative RT-PCR) for TLRs 1, 2, 3, 5, and 6, but not TLRs 4, 7, 8, or 9. This profile of TLR expression differs from the D3 mES cell line by others (Lee, Hong et al. 2009), where RT-PCR analysis showed mRNA for TLRs 2-6, but not for TLR1 or 7-9, thus distinguishing differential expression of mRNA for TLR-1 and 4 between the D3 and our E14 cell line. Interestingly, we do not observe expression of cell surface protein for TLR4 on the E14, CGR8, and R1 mES cell lines, and we did not detect mRNA expression for TLR4 on the E14 mES cell line. These differences may be due to the cell line itself, or perhaps subtle differences in how the cell lines were maintained and grown. In this context, others (Zampetaki, Xiao et al. 2006) have demonstrated that expression of TLR-4 varies in the D3 mES cell line and is regulated by epigenetic modifications. The state of chromatin in pluripotent ES cells is different from that of lineage committed cells (Sha et al.2009). The basic subunit of chromatin is the nucleosome, which is made up of two copies of the four core histones; H2A, H2B, H3 and H4, wrapped around 147bp of DNA (Sha et al, 2009) and maybe different amongst different ES cell lines. The organization of the chromatin nucleosome can have local and global effects on DNA mediated processes including gene regulation (Figure 27). It has recently been shown that epigenetic changes can contribute to cell fate by reprogramming a somatic cell to an embryonic stem cell. Ectopic expression of key transcription factors: cMyc, Oct-4, Sox-2, and Nanog in differentiated cells has clearly demonstrated that the epigenome of a differentiated cell can be reprogrammed to support embryonic development (Martin 1981; Meissner, Wernig et al. 2007; Takahashi, Okita et al. 2007;

Takahashi, Tanabe et al. 2007; Aoi, Yae et al. 2008; Lowry, Richter et al. 2008;  
Nakagawa, Koyanagi et al. 2008; Park, Zhao et al. 2008; Wernig, Meissner et al. 2008;  
Yamanaka 2008).

Figure 27. The basic unit of chromatin organization includes the nucleosome, which is made up of 147bp of DNA wrapped around a histone protein. Figure adapted from (Sha et al, 2009)

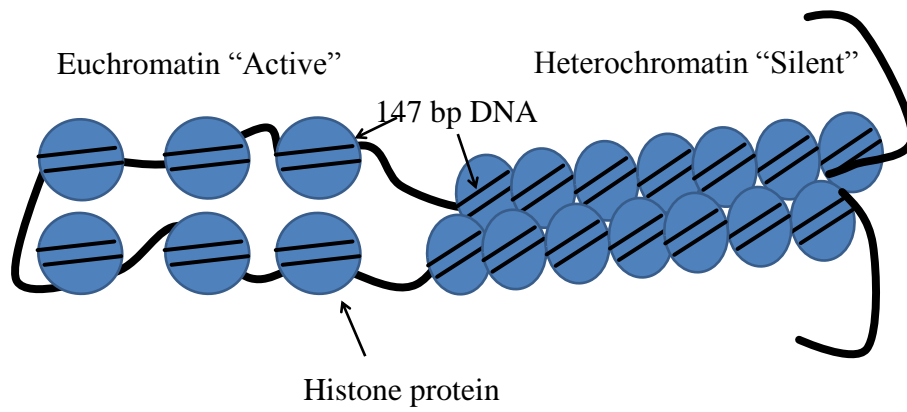


Figure 27



It is thought that TLR-2 and TLR-4 are important for differentiation and self renewal of other types of stem cells (Nagai, Garrett et al. 2006). A recent report shows MSCs that are set to undergo differentiation in the presence of TLR-2 ligand stimulation remained in a non-differentiated state (Pevsner-Fischer, Morad et al. 2007). Most importantly, we have defined a new role for TLR-2 in the E14 mES cell line, and its ligand Pam<sub>3</sub>Cys on the E14 mES cell line. Pam<sub>3</sub>Cys enhanced proliferation and cell survival, and decreased apoptosis in LIF-cultured cells, without apparent changes in the immature phenotype of the cells as assessed by cell morphology, and expression of SSEA-1, Oct-4, KLF-4, Sox-2 and alkaline phosphatase.

#### **TLR-2 Pathway Activates NF- $\kappa$ B in mES cells**

NF- $\kappa$ B nuclear translocation as well as increased proliferation did not result from TLR-4 ligand stimulation. We speculate that TLR-2 activation on mES cells may play a role in maintenance of the mES cell niche. Some of these effects may be, at least in part, mediated by translocation of NF- $\kappa$ B (Delhalle, Blasius et al. 2004; Liang, Zhou et al. 2004), and events upstream of NF- $\kappa$ B, including phosphorylation of IKK- $\alpha/\beta$ , as well as downstream reflects such as enhanced protein expression of BCL-2, as well as induced/enhanced expression of mRNA for TNF-  $\alpha$ , IFN- $\gamma$ , and IL-6. These cytokines have many functional activities, including effects on the hematopoietic system (Delhalle, Blasius et al. 2004). Although we did not detect, within the limits of our ELISA assay, TNF- $\alpha$ , IL-6 nor IFN- $\beta$  protein released into mES cell line containing culture medium in the presence or absence of Pam<sub>3</sub>Cys, if these three cytokines are having effects on

proliferation and/or survival of the E14 mES cell line, it would likely be through an autocrine-type interaction within the E14 cells, unless cytokine levels below that which we can detect are active, or working in synergy with each other and/or other released cytokines (Guo, Hangoc et al. 2005).

In contrast to the results of others (Lee, Hong et al. 2009) with the D3 mES cell line in which a large percentage of the cells expressed TLR-4, and LPS from *E.coli* modestly enhanced proliferation of these cells as detected by BrdU incorporation, our E14 mESC line showed no expression of TLR-4 on the cell surface, but responded to LPS from *Salmonella* with decreased cell survival and enhanced apoptosis. Whether this is mediated by TLR-4 or another TLR is not clear, but it did not appear to reflect nuclear translocation of NF- $\kappa$ B as noted in Figure 3 A-D. This does bring up caution in assuming that what occurs in one mES cell line will happen in another mES cell line. Again, this may reflect the mES cell itself, or how these cells are maintained in culture (Zampetaki, Xiao et al. 2006). It has recently been shown that “non-classical” LPS, such as that from *bacteroides fragilis* or any bacteria other than *Escherichia coli*, signals primarily through TLR-2 and not TLR-4 (Alhawi, Stewart et al. 2009). Classical LPS comes from *Escherichia coli* bacteria but in our studies we used LPS from *Salmonella* and this may be working through the TLR-2 receptor on the E14 mES cell line. Therefore, LPS maybe working through TLR-2 but functions to activate a pathway which causes apoptosis, where as Pam<sub>3</sub>Cys functions through the TLR-2 receptor and activates a pathway which cause proliferation of ES cells. This requires further investigation. Lastly our results with poly I:C (Figure 3 F), an activator of TLR-3, suggest that TLR-3 is functionally active in

the E14 mES cell line, as it is enhancing cell proliferation in the D3 mES cell line (Lee, Hong et al. 2009). In our case, we showed that PolyI:C enhanced/induced phosphorylation of IKK $\alpha/\beta$ .

### **Differentiation Experiments**

In our study, we found that TLR-2 activation, by its ligand Pam<sub>3</sub>cys, may help to decrease differentiation of mES cells in the absence of LIF. However, these studies were not conclusive due to differing effects as assessed by Western blotting and flow cytometry.

Roles of TLRs on differentiation of HPCs have been reported in innate immune system replenishment by HPCs (Nagai, Garrett et al. 2006) and in regeneration of intestinal epithelia (Pull, Doherty et al. 2005). Further investigation of these processes will be needed to determine how signals delivered through the activation of TLRs influence stem cell differentiation.

In summary, we demonstrate that mES cells express functional TLR-2 and that the expression of TLR-2 may be involved in proliferation and survival of non-differentiated mES cells. It is possible, but as yet unproven that activation of TLR-2 may helps mES cells remain in an un-differentiated state under differentiation inducing conditions, such as with removal of LIF.

Murine ES cell lines have been and continue to be useful models to study stem cell function and responsiveness to cytokines/ligands. Overall, this work is in agreement with the statement of others (Lee, Hong et al. 2009), that although the biological

significance of functional TLRs in mES cell lines are not yet known, further investigation of these cells could shed important and new information on the self-renewing, pluripotent state of ES cells that may translate into useful information for other stem cell types, and their modulation.

## FUTURE DIRECTIONS

### **Activation of Natural TLR-2 ligands on mESCs**

There are many unanswered questions. For example, what would be the natural ligand for TLR-2 on ES cells? In our study we used one ligand, Pam<sub>3</sub>Cys, but there are other ligands for the TLR-2/TLR-6 heterodimer. Peptidoglycan is a natural TLR-2 ligand (Lien, Sellati et al. 1999; Asong, Wolfert et al. 2009; Shida, Kiyoshima-Shibata et al. 2009). It activates TLR-2 through the TLR-2/TLR-6 heterodimer and has also been shown to cause an induction of NF- $\kappa$ B nuclear translocation in other cells, and may also be functional in mES cells because we show expression of TLR-2 and TLR-6 at the mRNA level (Figure 5). We could also determine if TLR-6 is expressed on the surface of mES cells, when antibodies to TLR-6 become available.

### **Effects of TLR2 activation on mES cells differentiation**

We did not perform self renewal colony assays on mESCs, and this can be done. Our attempts to determine if TLR-2 activation could block or prevent differentiation of the mES cells in the absence of LIF but in the presence of TLR-2 ligand was not conclusive. TLR-2 may be involved in helping to maintain the niche for ES cells self-renewal. We showed Oct-4 levels increase in the absence of LIF and that ERK phosphorylation decreased in mES cells in the absence of LIF but in the presence of TLR-2 ligand assessed by western blot, but our flow data showed little change in expression of Oct-4 levels in the absence or presence of Pam<sub>3</sub>Cys but after removal of LIF (Figure 26). Since

ES cell differentiation to EBs results in the formation of a ball of cells, perhaps all the cells were not broken up in order to get an accurate readout of cellular and intracellular protein levels. In the future, we could also perform western blot experiments using other undifferentiated markers such as Nanog, Sox-2, and KLF-4 to determine if we see expression in Day6 EBs treated with Pam<sub>3</sub>Cys.

**Do other TLR-ligands influence differentiation of mES cells in the absence of LIF?**

We can evaluate this by further differentiating the cells in the absence of LIF and determining if they form more differentiated cells, such as an hemangioblast. Next, we can check for differentiation markers such as Brachyury and FLK-1 expression in these EBs as compared to cells not treated with TLR ligands. We could also determine effects on differentiation down the hematopoietic and endothelial cell lineages that derive from hemangioblast.

## REFERENCES

- Adema, G. J., I. J. de Vries, et al. (2005). "Migration of dendritic cell based cancer vaccines: in vivo veritas?" Curr Opin Immunol **17**(2): 170-4.
- Akira, S., K. Takeda, et al. (2001). "Toll-like receptors: critical proteins linking innate and acquired immunity." Nat Immunol **2**(8): 675-80.
- Alhawi, M., J. Stewart, et al. (2009). "Bacteroides fragilis signals through Toll-like receptor (TLR) 2 and not through TLR4." J Med Microbiol **58**(Pt 8): 1015-22.
- Aoi, T., K. Yae, et al. (2008). "Generation of pluripotent stem cells from adult mouse liver and stomach cells." Science **321**(5889): 699-702.
- Arbibe, L., J. P. Mira, et al. (2000). "Toll-like receptor 2-mediated NF-kappa B activation requires a Rac1-dependent pathway." Nat Immunol **1**(6): 533-40.
- Arsura, M., F. Mercurio, et al. (2000). "Role of the IkappaB kinase complex in oncogenic Ras- and Raf-mediated transformation of rat liver epithelial cells." Mol Cell Biol **20**(15): 5381-91.
- Asong, J., M. A. Wolfert, et al. (2009). "Binding and Cellular Activation Studies Reveal That Toll-like Receptor 2 Can Differentially Recognize Peptidoglycan from Gram-positive and Gram-negative Bacteria." J Biol Chem **284**(13): 8643-53.
- Avilion, A. A., S. K. Nicolis, et al. (2003). "Multipotent cell lineages in early mouse development depend on SOX2 function." Genes Dev **17**(1): 126-40.
- Axelrod, H. R. (1984). "Embryonic stem cell lines derived from blastocysts by a simplified technique." Dev Biol **101**(1): 225-8.

- Banchereau, J. and R. M. Steinman (1998). "Dendritic cells and the control of immunity." Nature **392**(6673): 245-52.
- Bernad, A., M. Kopf, et al. (1994). "Interleukin-6 is required in vivo for the regulation of stem cells and committed progenitors of the hematopoietic system." Immunity **1**(9): 725-31.
- Beutler, B., K. Hoebe, et al. (2003). "How we detect microbes and respond to them: the Toll-like receptors and their transducers." J Leukoc Biol **74**(4): 479-85.
- Beutler, B., K. Hoebe, et al. (2004). "Genetic analysis of innate immunity: TIR adapter proteins in innate and adaptive immune responses." Microbes Infect **6**(15): 1374-81.
- Beutler, B., Z. Jiang, et al. (2006). "Genetic analysis of host resistance: Toll-like receptor signaling and immunity at large." Annu Rev Immunol **24**: 353-89.
- Bowie, A. and L. A. O'Neill (2000). "The interleukin-1 receptor/Toll-like receptor superfamily: signal generators for pro-inflammatory interleukins and microbial products." J Leukoc Biol **67**(4): 508-14.
- Bromberg, J. F., M. H. Wrzeszczynska, et al. (1999). "Stat3 as an oncogene." Cell **98**(3): 295-303.
- Burdon, T., I. Chambers, et al. (1999). "Signaling mechanisms regulating self-renewal and differentiation of pluripotent embryonic stem cells." Cells Tissues Organs **165**(3-4): 131-43.
- Burdon, T., A. Smith, et al. (2002). "Signalling, cell cycle and pluripotency in embryonic stem cells." Trends Cell Biol **12**(9): 432-8.



- Burdon, T., C. Stracey, et al. (1999). "Suppression of SHP-2 and ERK signalling promotes self-renewal of mouse embryonic stem cells." Dev Biol **210**(1): 30-43.
- Chung, Y. J., B. B. Park, et al. (2006). "Unique effects of Stat3 on the early phase of hematopoietic stem cell regeneration." Blood **108**(4): 1208-15.
- Delhalle, S., R. Blasius, et al. (2004). "A beginner's guide to NF-kappaB signaling pathways." Ann N Y Acad Sci **1030**: 1-13.
- Derbigny, W. A., S. C. Hong, et al. (2007). "Chlamydia muridarum infection elicits a beta interferon response in murine oviduct epithelial cells dependent on interferon regulatory factor 3 and TRIF." Infect Immun **75**(3): 1280-90.
- Dexter, T. M., T. D. Allen, et al. (1978). "Factors controlling the proliferation of haemopoietic stem cells in vitro." Symp Soc Dev Biol(35): 149-60.
- Diebold, S. S., T. Kaisho, et al. (2004). "Innate antiviral responses by means of TLR7-mediated recognition of single-stranded RNA." Science **303**(5663): 1529-31.
- Doetschman, T., P. Williams, et al. (1988). "Establishment of hamster blastocyst-derived embryonic stem (ES) cells." Dev Biol **127**(1): 224-7.
- Evans, M. J. and M. H. Kaufman (1981). "Establishment in culture of pluripotential cells from mouse embryos." Nature **292**(5819): 154-6.
- Ferrandon, D., J. L. Imler, et al. (2004). "Sensing infection in Drosophila: Toll and beyond." Semin Immunol **16**(1): 43-53.
- Friel, R., S. van der Sar, et al. (2005). "Embryonic stem cells: understanding their history, cell biology and signalling." Adv Drug Deliv Rev **57**(13): 1894-903.

- Gangloff, M., A. N. Weber, et al. (2003). "Evolutionary relationships, but functional differences, between the Drosophila and human Toll-like receptor families." Biochem Soc Trans **31**(Pt 3): 659-63.
- Gerhartz, C., B. Heesel, et al. (1996). "Differential activation of acute phase response factor/STAT3 and STAT1 via the cytoplasmic domain of the interleukin 6 signal transducer gp130. I. Definition of a novel phosphotyrosine motif mediating STAT1 activation." J Biol Chem **271**(22): 12991-8.
- Guo, Y., B. Graham-Evans, et al. (2006). "Murine embryonic stem cells secrete cytokines/growth modulators that enhance cell survival/anti-apoptosis and stimulate colony formation of murine hematopoietic progenitor cells." Stem Cells **24**(4): 850-6.
- Guo, Y., G. Hangoc, et al. (2005). "SDF-1/CXCL12 enhances survival and chemotaxis of murine embryonic stem cells and production of primitive and definitive hematopoietic progenitor cells." Stem Cells **23**(9): 1324-32.
- Guo, Y., C. Mantel, et al. (2008). "Oct-4 is critical for survival/antiapoptosis of murine embryonic stem cells subjected to stress: effects associated with Stat3/survivin." Stem Cells **26**(1): 30-4.
- Hackney, J. A., P. Charbord, et al. (2002). "A molecular profile of a hematopoietic stem cell niche." Proc Natl Acad Sci U S A **99**(20): 13061-6.
- Heil, F., H. Hemmi, et al. (2004). "Species-specific recognition of single-stranded RNA via toll-like receptor 7 and 8." Science **303**(5663): 1526-9.

- Heinrich, P. C., I. Behrmann, et al. (1998). "Interleukin-6-type cytokine signalling through the gp130/Jak/STAT pathway." Biochem J **334** ( Pt 2): 297-314.
- Henderson, J. K., J. S. Draper, et al. (2002). "Preimplantation human embryos and embryonic stem cells show comparable expression of stage-specific embryonic antigens." Stem Cells **20**(4): 329-37.
- Hilton, D. J., A. A. Hilton, et al. (1994). "Cloning of a murine IL-11 receptor alpha-chain; requirement for gp130 for high affinity binding and signal transduction." EMBO J **13**(20): 4765-75.
- Hoebe, K., X. Du, et al. (2003). "Identification of Lps2 as a key transducer of MyD88-independent TIR signalling." Nature **424**(6950): 743-8.
- Hoebe, K., E. Janssen, et al. (2004). "The interface between innate and adaptive immunity." Nat Immunol **5**(10): 971-4.
- Honda, K., N. Murao, et al. (2003). "The role of spinal muscarinic acetylcholine receptors in clonidine-induced anti-nociceptive effects in rats." Biol Pharm Bull **26**(8): 1178-80.
- Hoshino, K., O. Takeuchi, et al. (1999). "Cutting edge: Toll-like receptor 4 (TLR4)-deficient mice are hyporesponsive to lipopolysaccharide: evidence for TLR4 as the Lps gene product." J Immunol **162**(7): 3749-52.
- Hu, X., J. Chen, et al. (2007). "Crosstalk among Jak-STAT, Toll-like receptor, and ITAM-dependent pathways in macrophage activation." J Leukoc Biol **82**(2): 237-43.

- Irie, T., T. Muta, et al. (2000). "TAK1 mediates an activation signal from toll-like receptor(s) to nuclear factor-kappaB in lipopolysaccharide-stimulated macrophages." FEBS Lett **467**(2-3): 160-4.
- Iwasaki, A. and R. Medzhitov (2004). "Toll-like receptor control of the adaptive immune responses." Nat Immunol **5**(10): 987-95.
- Jenkins, B. J., A. W. Roberts, et al. (2007). "Pathologic consequences of STAT3 hyperactivation by IL-6 and IL-11 during hematopoiesis and lymphopoiesis." Blood **109**(6): 2380-8.
- Jenkins, B. J., A. W. Roberts, et al. (2005). "The threshold of gp130-dependent STAT3 signaling is critical for normal regulation of hematopoiesis." Blood **105**(9): 3512-20.
- Johansson, B. M. and M. V. Wiles (1995). "Evidence for involvement of activin A and bone morphogenetic protein 4 in mammalian mesoderm and hematopoietic development." Mol Cell Biol **15**(1): 141-51.
- Kambris, Z., J. A. Hoffmann, et al. (2002). "Tissue and stage-specific expression of the Tolls in Drosophila embryos." Gene Expr Patterns **2**(3-4): 311-7.
- Kawai, T. and S. Akira (2005). "Toll-like receptor downstream signaling." Arthritis Res Ther **7**(1): 12-9.
- Kawai, T. and S. Akira (2006). "TLR signaling." Cell Death Differ **13**(5): 816-25.
- Kondo, M., I. L. Weissman, et al. (1997). "Identification of clonogenic common lymphoid progenitors in mouse bone marrow." Cell **91**(5): 661-72.

- Krieg, A. M., S. M. Efler, et al. (2004). "Induction of systemic TH1-like innate immunity in normal volunteers following subcutaneous but not intravenous administration of CPG 7909, a synthetic B-class CpG oligodeoxynucleotide TLR9 agonist." J Immunother **27**(6): 460-71.
- Kurt-Jones, E. A., F. Sandor, et al. (2004). "Use of murine embryonic fibroblasts to define Toll-like receptor activation and specificity." J Endotoxin Res **10**(6): 419-24.
- Lebon, A., P. Adler, et al. (2004). "Magnetism, charge order, and giant magnetoresistance in SrFeO(3-delta) single crystals." Phys Rev Lett **92**(3): 037202.
- Lee, S. H., B. Hong, et al. (2009). "Embryonic stem cells and mammary luminal progenitors directly sense and respond to microbial products." Stem Cells **27**(7): 1604-15.
- Li, M., D. F. Carpio, et al. (2001). "An essential role of the NF-kappa B/Toll-like receptor pathway in induction of inflammatory and tissue-repair gene expression by necrotic cells." J Immunol **166**(12): 7128-35.
- Liang, Y., Y. Zhou, et al. (2004). "NF-kappaB and its regulation on the immune system." Cell Mol Immunol **1**(5): 343-50.
- Lien, E., T. J. Sellati, et al. (1999). "Toll-like receptor 2 functions as a pattern recognition receptor for diverse bacterial products." J Biol Chem **274**(47): 33419-25.
- Lowry, W. E., L. Richter, et al. (2008). "Generation of human induced pluripotent stem cells from dermal fibroblasts." Proc Natl Acad Sci U S A **105**(8): 2883-8.

- Lund, J., A. Sato, et al. (2003). "Toll-like receptor 9-mediated recognition of Herpes simplex virus-2 by plasmacytoid dendritic cells." J Exp Med **198**(3): 513-20.
- Martin, G. R. (1981). "Isolation of a pluripotent cell line from early mouse embryos cultured in medium conditioned by teratocarcinoma stem cells." Proc Natl Acad Sci U S A **78**(12): 7634-8.
- Martin, G. R. and M. J. Evans (1974). "The morphology and growth of a pluripotent teratocarcinoma cell line and its derivatives in tissue culture." Cell **2**(3): 163-72.
- Meissner, A., M. Wernig, et al. (2007). "Direct reprogramming of genetically unmodified fibroblasts into pluripotent stem cells." Nat Biotechnol **25**(10): 1177-81.
- Mercurio, F., B. W. Murray, et al. (1999). "IkappaB kinase (IKK)-associated protein 1, a common component of the heterogeneous IKK complex." Mol Cell Biol **19**(2): 1526-38.
- Mintz, B. and K. Illmensee (1975). "Normal genetically mosaic mice produced from malignant teratocarcinoma cells." Proc Natl Acad Sci U S A **72**(9): 3585-9.
- Nagai, Y., K. P. Garrett, et al. (2006). "Toll-like receptors on hematopoietic progenitor cells stimulate innate immune system replenishment." Immunity **24**(6): 801-12.
- Nakagawa, M., M. Koyanagi, et al. (2008). "Generation of induced pluripotent stem cells without Myc from mouse and human fibroblasts." Nat Biotechnol **26**(1): 101-6.
- Naumann, M. (2000). "Nuclear factor-kappa B activation and innate immune response in microbial pathogen infection." Biochem Pharmacol **60**(8): 1109-14.
- Niwa, H., T. Burdon, et al. (1998). "Self-renewal of pluripotent embryonic stem cells is mediated via activation of STAT3." Genes Dev **12**(13): 2048-60.

- Niwa, H., J. Miyazaki, et al. (2000). "Quantitative expression of Oct-3/4 defines differentiation, dedifferentiation or self-renewal of ES cells." Nat Genet **24**(4): 372-6.
- Oshiumi, H., M. Matsumoto, et al. (2003). "TICAM-1, an adaptor molecule that participates in Toll-like receptor 3-mediated interferon-beta induction." Nat Immunol **4**(2): 161-7.
- Ozinsky, A., D. M. Underhill, et al. (2000). "The repertoire for pattern recognition of pathogens by the innate immune system is defined by cooperation between toll-like receptors." Proc Natl Acad Sci U S A **97**(25): 13766-71.
- Park, I. H., R. Zhao, et al. (2008). "Reprogramming of human somatic cells to pluripotency with defined factors." Nature **451**(7175): 141-6.
- Pesce, M., K. Anastassiadis, et al. (1999). "Oct-4: lessons of totipotency from embryonic stem cells." Cells Tissues Organs **165**(3-4): 144-52.
- Pevsner-Fischer, M., V. Morad, et al. (2007). "Toll-like receptors and their ligands control mesenchymal stem cell functions." Blood **109**(4): 1422-32.
- Poltorak, A., X. He, et al. (1998). "Defective LPS signaling in C3H/HeJ and C57BL/10ScCr mice: mutations in Tlr4 gene." Science **282**(5396): 2085-8.
- Pull, S. L., J. M. Doherty, et al. (2005). "Activated macrophages are an adaptive element of the colonic epithelial progenitor niche necessary for regenerative responses to injury." Proc Natl Acad Sci U S A **102**(1): 99-104.
- Reubinoff, B. E., M. F. Pera, et al. (2000). "Embryonic stem cell lines from human blastocysts: somatic differentiation in vitro." Nat Biotechnol **18**(4): 399-404.

- Reubinoff, B. E., M. F. Pera, et al. (2001). "Effective cryopreservation of human embryonic stem cells by the open pulled straw vitrification method." Hum Reprod **16**(10): 2187-94.
- Rolls, A., R. Shechter, et al. (2007). "Toll-like receptors modulate adult hippocampal neurogenesis." Nat Cell Biol **9**(9): 1081-8.
- Rosetto, M., Y. Engstrom, et al. (1995). "Signals from the IL-1 receptor homolog, Toll, can activate an immune response in a Drosophila hemocyte cell line." Biochem Biophys Res Commun **209**(1): 111-6.
- Ruegg, C., A. Yilmaz, et al. (1998). "Evidence for the involvement of endothelial cell integrin alphaVbeta3 in the disruption of the tumor vasculature induced by TNF and IFN-gamma." Nat Med **4**(4): 408-14.
- Sato, N., L. Meijer, et al. (2004). "Maintenance of pluripotency in human and mouse embryonic stem cells through activation of Wnt signaling by a pharmacological GSK-3-specific inhibitor." Nat Med **10**(1): 55-63.
- Sha, K. and L. A. Boyer (2009). "The chromatin signature of pluripotent cells." Stembook, ed. The Stem Cell Research Community, Stembook, doi/10.3824/stembook.1.45.1.
- Shida, K., J. Kiyoshima-Shibata, et al. (2009). "Peptidoglycan from lactobacilli inhibits interleukin-12 production by macrophages induced by Lactobacillus casei through Toll-like receptor 2-dependent and independent mechanisms." Immunology **128**(1 Suppl): e858-69.



- Shimizu, T., Y. Kida, et al. (2008). "A triacylated lipoprotein from *Mycoplasma genitalium* activates NF-kappaB through Toll-like receptor 1 (TLR1) and TLR2." *Infect Immun* **76**(8): 3672-8.
- Smith, A. G. (2001). "Embryo-derived stem cells: of mice and men." *Annu Rev Cell Dev Biol* **17**: 435-62.
- Smith, A. G., J. K. Heath, et al. (1988). "Inhibition of pluripotential embryonic stem cell differentiation by purified polypeptides." *Nature* **336**(6200): 688-90.
- Solter, D. and B. B. Knowles (1978). "Monoclonal antibody defining a stage-specific mouse embryonic antigen (SSEA-1)." *Proc Natl Acad Sci U S A* **75**(11): 5565-9.
- Takahashi, K., K. Okita, et al. (2007). "Induction of pluripotent stem cells from fibroblast cultures." *Nat Protoc* **2**(12): 3081-9.
- Takahashi, K., K. Tanabe, et al. (2007). "Induction of pluripotent stem cells from adult human fibroblasts by defined factors." *Cell* **131**(5): 861-72.
- Takeda, K. and S. Akira (2005). "Toll-like receptors in innate immunity." *Int Immunol* **17**(1): 1-14.
- Takeuchi, O., K. Hoshino, et al. (1999). "Differential roles of TLR2 and TLR4 in recognition of gram-negative and gram-positive bacterial cell wall components." *Immunity* **11**(4): 443-51.
- Takeuchi, O., A. Kaufmann, et al. (2000). "Cutting edge: preferentially the R-stereoisomer of the mycoplasmal lipopeptide macrophage-activating lipopeptide-2 activates immune cells through a toll-like receptor 2- and MyD88-dependent signaling pathway." *J Immunol* **164**(2): 554-7.

- Takeuchi, O., S. Sato, et al. (2002). "Cutting edge: role of Toll-like receptor 1 in mediating immune response to microbial lipoproteins." J Immunol **169**(1): 10-4.
- Thomson, J. A., J. Itskovitz-Eldor, et al. (1998). "Embryonic stem cell lines derived from human blastocysts." Science **282**(5391): 1145-7.
- Underhill, D. M., A. Ozinsky, et al. (1999). "The Toll-like receptor 2 is recruited to macrophage phagosomes and discriminates between pathogens." Nature **401**(6755): 811-5.
- Wernig, M., A. Meissner, et al. (2008). "c-Myc is dispensable for direct reprogramming of mouse fibroblasts." Cell Stem Cell **2**(1): 10-2.
- Williams, R. L., D. J. Hilton, et al. (1988). "Myeloid leukaemia inhibitory factor maintains the developmental potential of embryonic stem cells." Nature **336**(6200): 684-7.
- Wobus, A. M. and K. R. Boheler (2005). "Embryonic stem cells: prospects for developmental biology and cell therapy." Physiol Rev **85**(2): 635-78.
- Wobus, A. M., H. Holzhausen, et al. (1984). "Characterization of a pluripotent stem cell line derived from a mouse embryo." Exp Cell Res **152**(1): 212-9.
- Xu, C., M. S. Inokuma, et al. (2001). "Feeder-free growth of undifferentiated human embryonic stem cells." Nat Biotechnol **19**(10): 971-4.
- Yamamoto, M., S. Sato, et al. (2003). "Role of adaptor TRIF in the MyD88-independent toll-like receptor signaling pathway." Science **301**(5633): 640-3.
- Yamanaka, S. (2008). "Induction of pluripotent stem cells from mouse fibroblasts by four transcription factors." Cell Prolif **41 Suppl 1**: 51-6.

- Ying, Q. L., M. Stavridis, et al. (2003). "Conversion of embryonic stem cells into neuroectodermal precursors in adherent monoculture." Nat Biotechnol **21**(2): 183-6.
- Zampetaki, A., Q. Xiao, et al. (2006). "TLR4 expression in mouse embryonic stem cells and in stem cell-derived vascular cells is regulated by epigenetic modifications." Biochem Biophys Res Commun **347**(1): 89-99.
- Zandi, E. and M. Karin (1999). "Bridging the gap: composition, regulation, and physiological function of the IkappaB kinase complex." Mol Cell Biol **19**(7): 4547-51.
- Zhang, J., C. Niu, et al. (2003). "Identification of the haematopoietic stem cell niche and control of the niche size." Nature **425**(6960): 836-41.
- Zipori, D. (1989). "Stromal cells from the bone marrow: evidence for a restrictive role in regulation of hemopoiesis." Eur J Haematol **42**(3): 225-32.
- Zipori, D. (1990). "Regulation of hemopoiesis by cytokines that restrict options for growth and differentiation." Cancer Cells **2**(7): 205-11.
- Zipori, D. (1992). "The renewal and differentiation of hemopoietic stem cells." FASEB J **6**(9): 2691-7.

## CURRICULUM VITAE

Tammi M. Taylor

### **Education**

Indiana University, Indianapolis, IN  
Ph.D. Microbiology and Immunology, 2010  
Dissertation: Mouse Embryonic Stem Cells Express Functional Toll Like Receptor 2

Jackson State University, Jackson, MS  
M.S. Biology, 2004  
Thesis: The Role of the N-Terminal Domain of Signal Transducer Activator of Transcription (STAT)-4

Tougaloo College, Tougaloo, MS  
B.S. Biology, 2002

### **Current Position**

Post-Doctoral Fellow, Emory University School of Medicine

### **Honors, Awards, and Fellowships**

Fellowship In Research and Science Teaching (FIRST), Emory University School of Medicine, .....Jan, 2010-Jan, 2013

Edwin T. Harper Scholar, Indiana University School of Medicine, ..Feb, 2007- Dec, 2009

Bridges to Doctorate Fellow, Jackson State University, ..... Aug, 2003-Aug, 2004

Bessie Irene Smith Scholarship/UNCF, Tougaloo College, ..... March, 2000- March, 2001

Tenneco Scholarship/UNCF, Tougaloo, College, ..... March, 1999- March, 2000

### **Research and Training Experience**

Bridges to Doctorate Program, Indiana University, Indianapolis, IN  
Summer Student: Microbiology and Immunology  
Mentor: Alexander Dent, Ph.D. .... May, 2004 - August, 2004

Bridges to Doctorate Program, Indiana University, Indianapolis, IN  
Summer Student: Microbiology and Immunology  
Mentor: Mark Kaplan, Ph.D. .... May, 2003 - August,2003

McNair Scholar University of North Texas Science Center, Fort Worth, TX  
McNair Scholar Summer Student: Public Health  
Mentor: Mark Garner, Ph.D. .... May, 2002-August, 2002

Leadership Alliance Summer Research Program, Brown University, Providence, RI  
Summer Research Early Identification Program Summer Research: Clinical Hematology  
Mentor: Loren D. Fast, Ph.D. .... May, 2000-August,2000

### **Professional Experience**

Teaching Assistant to Professor Larsen, PhD For “Microbiology Lab”, Fall, 2006.  
Collaborated With Dr. Larson About Our Lesson Plans Each Week, Met With Students  
Upon Request, and Graded All Exams Including Final Exam.

### **Conferences Attended**

51<sup>st</sup> Annual American Society of Hematology Conference, Poster Presentation, New  
Orleans, LA, ..... Dec, 2009

NOBCChe Regional Biotechnology Conference, Poster Presentation, Eli Lilly,  
Indianapolis, IN, ..... Oct, 2009

Leadership Alliance National Symposium, Moderator for Undergraduate Oral  
Presentations, Chantilly, VA, ..... July, 2009

NOBCChe Regional Biotechnology Conference, Judge for Undergraduate and High  
School Presentations, Eli Lilly, Indianapolis, IN, ..... Oct, 2008

49<sup>th</sup> Annual American Society of Hematology Conference, Atlanta, GA, ..... Dec, 2007

### **Publications**

**Taylor, T.M.**, Kim, Y-J., Ou, X., Derbigny, W., Broxmeyer, H.E., “Toll Like Receptor 2  
Mediates Proliferation, Survival, NF- $\kappa$ B Translocation, and Cytokine mRNA Expression  
in LIF-Maintained Undifferentiated Mouse Embryonic Stem Cells” Stem Cells and  
Development, January, 2010. (In Revision)

**Taylor, T.M.**, Ou, X., Chae, H., and Broxmeyer, H.E.”SIRT1 is required for Mouse  
Embryonic Stem Cell Commitment to Hematopoietic Cell Differentiation. January, 2010  
(Manuscript in Preparation)