

存档

79级

Pharmacology examination

Date

Name

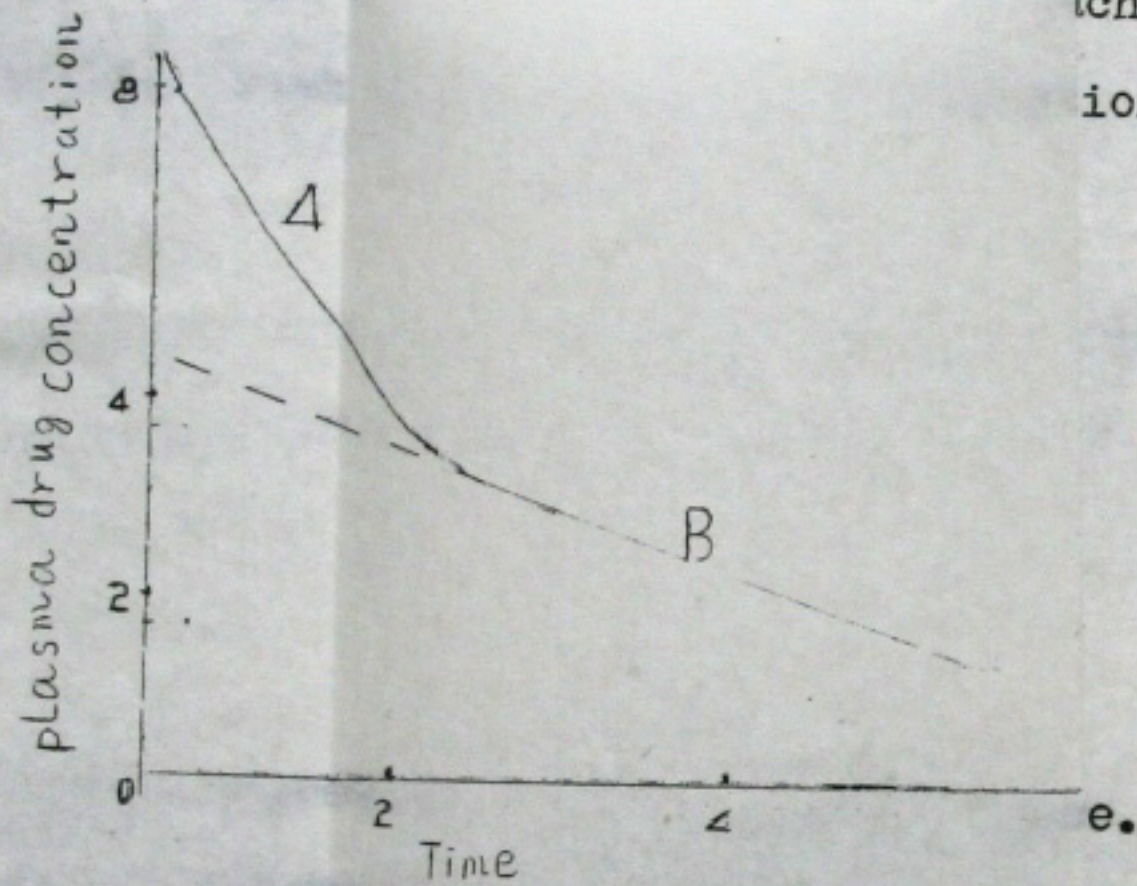
Multiple-choice questions (one mark for each question)

Type A.

Each of the question is followed by 5 suggested

ch case.

ions



D. The drug is eliminated by zeroorder kinetics.

E. Neither is correct.

2. If drug x is eliminated mainly by the kidney and is

a weak acid, alkalization of the urine would

A. make curve A steeper

B. make curve A less steep

C. make curve B steeper

A. increasing the production of -1-

D. make curve B less steep

E. not affect you slope of curve B

3. If drug x is eliminated mainly by microsomal enzymes,

having the patient take luminal for 4 weeks would

tend to.

A. make curve A steeper.

B. make curve A less steep.

C. make curve B steeper.

D. make curve B less steep.

E. Not affect the slope of curve B.

4. If drug x has a plasma  $t_{1/2}$  of 10 days and is adminis-

tered every 24 hours, a plateau blood concentration of

the drug develops.

A. when the amount of drug eliminated in 24 hours equals

half the daily dose.

B. at 40 to 50 days.

C. at 4 to 5 days.

D. at 48 hours.

E. none of the above.

5. Select the incorrect statement regarding ephedrine.

A. If produces stimulation of c.N.S.

B. If acts in part by releasing catecholamines.

C. If is longer acting than Adr.

D. It's action is weaker than Adr.