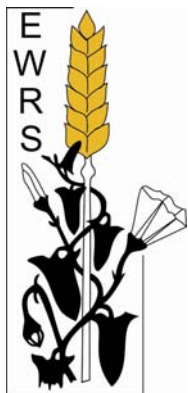


---

**EUROPEAN WEED RESEARCH SOCIETY**Secretary

Dr. Andrej SIMONCIC  
Agricultural Institute of Slovenia  
Hacquetova 17  
SI-1000 Ljubljana  
[andrej.simoncic@kis.si](mailto:andrej.simoncic@kis.si)

Newsletter Editor

Dr. Camilla MOONEN  
Land Lab  
Scuola Superiore Sant'Anna  
Piazza Martiri delle Libertà, 33  
IT-56127 Pisa  
[newsletter@ewrs.org](mailto:newsletter@ewrs.org)  
[moonen@sssup.it](mailto:moonen@sssup.it)

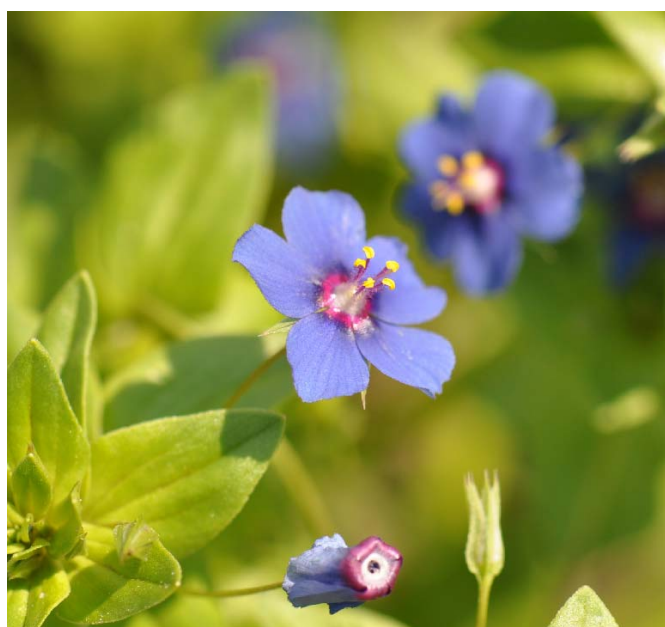


*Ailanthus altissima* (Mill.) (Tree of Heaven) climbing the castle walls in Castiglione di Garfagnana (Tuscany, Italy). In this Newsletter issue you can find the first information on the 3<sup>rd</sup> Symposium on 'Intractable Weeds and Plant Invaders' 2-7 October 2011, Ascona (Ticino), Switzerland. (Picture and text by Paolo Bàrberi).

---

## CONTENTS

Contents.....	1
From the Board .....	2
President's Message .....	2
Minutes of the 35 <sup>th</sup> General Assembly .....	4
EWRS Financial Report 2008.....	5
Scientific Committee and Working Groups .....	9
Report of the EWRS Working Group Herbicide Resistance.....	9
Report of the 12 <sup>th</sup> EWRS International Symposium on Aquatic Weeds 2009 .....	10
EWRS Working Group on Invasive Plants.....	12
Invitation to host the 16 <sup>th</sup> EWRS Symposium in 2013 .....	13
Member contributions .....	14
Close-up of <i>Adonis annua</i> L. ....	14
List of books and journals for disposal:.....	16
Reviews .....	17
The Encyclopaedia of Arable Weeds .....	17
Call for Conferences .....	18
Workshop "Towards sustainable management of <i>Ambrosia artemisiifolia</i> in Europe" .....	18
EWRS Education and Training Workshop on: How to write a paper for a scientific journal .....	18
15 <sup>th</sup> EWRS Symposium: subsidy to young scientists.....	19
3 <sup>rd</sup> Conference on Precision Crop Protection.....	20
21 <sup>st</sup> COLUMA Conference; International Meeting on Weed Control .....	21
Association of Applied Biologists conferences .....	22
3 <sup>rd</sup> Symposium on Environmental Weeds and Invasive Plants.....	22
Upcoming Conferences and Workshops .....	23
Editorial .....	24
Instructions for Contributors.....	24
Charges for Advertising Material in the Newsletter .....	24
EWRS Scientific Committee.....	26
EWRS Working Groups .....	26
EWRS Working Groups (continued) .....	27



Beautiful weeds; *Anagallis foemina* Mill. (Picture offered by Hansjörg Krähmer, Vice-President EWRS)

## **FROM THE BOARD**

---

### **PRESIDENT'S MESSAGE**

Dear Colleagues,

On November 6, 7 & 8 the EWRS Foundation Board, the Board and the Scientific Committee (SciCom) met in Volterra in Italy. During the 3 days a number of important issues were discussed that I will share with you.

Next year we are organising the 15<sup>th</sup> EWRS Symposium in Kaposvár in Hungary and Gabriella Kazinczi from Kaposvár University, who is chairing the Local Organising Committee, and Nandor Mátrai from the bureau that helps Gabriella organising the meeting therefore attended the SciCom meeting. The venue of the meeting is Kaposvár University, a university established in 1990 with state of the art meeting facilities and modern student accommodation that we will make use of.

The interest in participating in the symposium has been significant with 332 abstracts submitted. A tentative programme with 7 sessions and a scientific excursion has been planned. The abstracts have been allocated to a session and two session organisers per session have been appointed. At the end of November the authors of the abstracts will be notified and asked to produce the full abstract that will be published in the Symposium Proceedings. The fees for participation that includes all meals will be very reasonable compared to similar symposia and accommodation will be very cheap. For this symposium we are introducing lower student fees and as usual EWRS has allocated a sum for money for subsidising young scientists. I hope that these initiatives will help attracting even more young scientists than we normally have at our symposia and I strongly encourage the "older" scientist to consider inviting their PhD and MSc students to the symposium to present the results of their research and not at least to interact with the weed science community that we would like to see them stay part of in the future. I expect that all the Working Groups will meet during the symposia and this will also be a good opportunity for students to interact.

An important issue at every meeting of the Foundation Board is the economy of EWRS. Like other foundations our assets are placed on bank accounts or invested in for example bonds. Due to the financial crisis last year was difficult for many organisations but I am pleased to inform you that, due to what many financial advisors at that time would probably have characterised as a conservative investment, EWRS did very well last year with a 2.6% income on our investments. Without a sound economy it will not be possible for EWRS to support the activities of the Working Groups and allocate substantial subsidies to students and young scientists and the Foundation Board therefore devote a lot of time to discussing the economic affairs of the society.

This year will be electing a new Vice-President for 2010-2011 who will proceed to become President in 2012-2013. This means that our Past President Marco Quadranti will leave the Board. On behalf of the Board I would like to thank Marco for all his services to the society and his dedication to promote weed science in the 6 years he served on the Board. We will also be electing a new Scientific Secretary. After 8 years Paolo Bàrberi has decided not to seek re-election and I would also take this opportunity to thank Paolo for his numerous contributions to EWRS and not at least his leadership in organising the scientific programme of our symposia. Early next year two new additional members will be elected among the National Representatives to replace Thomas Eggers and Jukka Salonen. I will also take this opportunity to thank both of them for their services to the society that date many years back as both of them served as EWRS Secretary for many years.

Unfortunately we ran into some problems when sending out the voting forms which meant that some members did not receive their voting forms in time to be able to vote. The Board therefore extended the deadline until 15<sup>th</sup> November. Next time voting will be online as the long awaited shift to an online

system will be in place by the end of the year. This will not only make the voting procedure easier but also membership renewal and registration of new members.

This is my last message to you as my term as your President finishes by the end of the year. I feel very privileged having had the honour to serve as EWRS President. When I came in office as Vice-President 4 years ago EWRS was a very active society and I am pleased to say that this is still the case. Never before have the Working Groups been so active in organising joint research activities, workshops and training. As a matter of fact SciCom decided to establish a new Working Group (number 14) on European Weed Mapping lead by our current Vice-President Hansjörg Krähmer. We have members in 57 countries and although we would like to see that number increase we can consider ourselves as a truly international society. So although weed science is facing tremendous challenges in many countries where the importance and relevance of our science is not recognised and funding is difficult to obtain I am always very optimistic when I leave the yearly meetings of the SciCom and the Boards. With such a large number of dedicated and innovative researchers involved weed science our science will also have its place in the future. With this optimistic view on the future I am happy to handing over the Presidency to Hansjörg Krähmer. I know he shares my view on the state of the society and I am convinced that EWRS will continue to develop under his leadership.

Per Kudsk  
EWRS President



Present EWRS President Per Kudsk (left) hands over the gavel to the future President Hansjörg Krähmer (right).

[Back to Content](#)

## **MINUTES OF THE 35<sup>TH</sup> GENERAL ASSEMBLY**

Sunday 8 November 2009  
SIAF, Volterra, Italy

Report by Per Kudsk; EWRS President; [per.kudsk@agrsci.dk](mailto:per.kudsk@agrsci.dk)

Present: Per KUDSK (Chairman), Hansjöerg KRÄHMER, Ben POST, Paolo BARBERI, Christian BOHREN, Gabriela KAZINCZI, Jukka SALONEN, Paul HATCHER

### **GA-35.1 Opening (P. KUDSK)**

- P. KUDSK welcomed all participants and thanked P. BARBERI for hosting the meeting.

### **GA-35.2 Report of the Board (P. KUDSK)**

- In June this year a group of EWRS officers met with representatives of Wiley-Blackwell to discuss future perspectives of Weed Research. Wiley-Blackwell was very confident concerning the future of Weed Research. Nevertheless a number of action points were decided to secure the current position of Weed Research as the leading weed science journal.
- The EWRS Foundation Board met on 6 November 2009 and ratified the revised Foundation Articles. One implication of the ratification is that the Financial Committee, an ad hoc committee established to advise the Treasurer on investment policies, is terminated. P. KUDSK thanked on behalf of EWRS Peter LUTMAN for his active participation on the Financial Committee.
- The election of the new Vice-President and Scientific Secretary is still ongoing. Due to a mistake of the posting office many of the letters were sent as standard mail and arrived shortly before the original deadline. Thus the EWRS Board decided to prolong the voting period until 15 November. In the future elections will be online.

### **GA-35.3 Report of the Scientific Committee (SciCom) (P. BARBERI)**

- See full report in the next issue of the Newsletter.

### **GA-35.4 Report of the Treasurer (B. POST)**

- See report elsewhere in the Newsletter (p.5-8).

### **GA-35.5 Report of the Membership Office (B. POST)**

- See report elsewhere in the Newsletter (p.5-8).

### **GA-35.6 Report of the Editor of Weed Research (P. HATCHER)**

- Dr Paul Hatcher reported on Weed Research for 2008 and part of 2009. He took over from Andrea Graham as chair of the editorial board in August 2009, and the editorial board and the EWRS Board thanked her for her excellent work for the journal over many years. Weed Research is financially stable, with good renewal of subscriptions, and made a profit for the society in 2008 of £46,620, a 15% increase over 2008. Academically the journal is thriving, with increasing submissions and papers published (63 for volume 48 in 2008), and an impact factor in 2008 of 1.793, its highest ever. The journal will have the largest number of pages so far in 2009 and 2010, and in 2010 will have a cover redesign and review papers to celebrate the 50<sup>th</sup> volume of the journal.

### **GA-35.6 Any other business (P. KUDSK)**

- Nothing

### **GA-35.7 Next General Assembly (P.KUDSK)**

- July 13<sup>th</sup> 2010, Kaposvár, Hungary (in conjunction with the forthcoming EWRS Symposium).

## GA-35.9 Closing (P.KUDSK)

- At the end of 2009 the term of Past President M. QUADRANTI, Scientific Secretary P. BARBERI and Additional members of the Board J. SALONEN and T. EGGERS ends. P. KUDSK thanked all four of them for their significant and long standing contributions to EWRS.

## EWRS FINANCIAL REPORT 2008

Treasurer, Drs. Ben J. Post; [ewrs@bureaupost.nl](mailto:ewrs@bureaupost.nl)

3 November 2009

The EWRS Financial Report concludes the information of the "European Weed Research Society" (EWRS). The auditors Mr. J.H. Spijker and Mr. E.S.N Mol conducted the audit of the administration of the EWRS at the office of the Treasurer.

The balance and financial report were proved to be correct.

The Annexe 1 is correct and to be published in the EWRS Newsletter December 2009.

Ad Annexe 1. Income, Expenditure, Balance 2008

\* Capital of the Society on 31 December 2007 was € 3,456 (Annexe 1). Capital of the Society on 31 December 2008 was € 1,984 (Annexe 1).

The Executive Committee of the Society has asked financial support from the Foundation of an amount of € 29,000 EURO (Annexe 1).

The final result, including the transfer of money to the Foundation, is an apparent decrease in the Society's balance of € 1,472.

\* Income to the Society was € 61,429. Expenditure of the Society, due to scientific and executive activities, was € 91,199.

The result is an excess expenditure of € 29,770.

\* The financial activities of the Society resulted in an interest profit of € 0, but bank costs were € 702.

Ad Annexe 2.

\* The budget for the Year 2010 (Annexe 2) for the Working Groups and for other activities has been established according to the proposals by SciCom and Board on 8 November 2009, in Volterra, Italy.

The Board of the "Foundation for the financial interests of the EWRS" has accepted the balance of the Foundation.

The capital of the Foundation in 2008 decreased with € 15,539. This amount includes the transfer of € 29,000 to the Society. The Foundation's capital on 31 December 2008 was € 527,219.

The administration and balance of the Foundation has been audited by Mr. H. Wonnink (A.A.) (KAN Accountants, Doorwerth, The Netherlands)..

The Membership Fee for the year 2010 has been kept at the level of 2009 namely € 60.00 as standard fee, and a fee of € 30.00 for Student Members. Annex 3 and 4 for membership details and dynamics.

[Back to Content](#)

## Annex 1. Income, Expenditure and Balance 2008

<b>Society activities</b>	<b>Income</b>	<b>Expenditure</b>	<b>Balance</b>	
<b>Earnings</b>				
Membership Fees	10,128			
Journal Weed Research	51,301			
<i>sub-total</i>	<b>61,429</b>			
<b>Expenditure</b>				
Scientific Committee / Meetings		6,893		
Working Groups		22,765		
EWRS Symposia		0		
Other Symposia		11,561		
EWRS Subsidy Junior Scientists		10,463		
Board / Meetings		9,468		
Treasurers / Membership Office		16,025		
Newsletter (incl. postage)		3,442		
Website		1,296		
Taxes / Postage		2,830		
Notary Society Constitution		2,426		
Printing WG booklet		1,523		
Printing material WSSA		1,921		
Others		586		
<i>sub-total</i>		<b>91,199</b>		
<b>Financial Activities</b>				
Interest Society	0			
Bank Costs Society		702		
<i>sub-total</i>	<b>0</b>	<b>702</b>		
<b>total All Activities Society</b>	<b>61,429</b>	<b>91,901</b>	<b>(I-E)</b>	<b>-30,472</b>
Requested support from Foundation	29,000			<b>29,000</b>
<b>Result Society 2008</b>				<b>-1,472</b>
<b>Balance 31 December 2007</b>				<b>3,456</b>
<b>Balance 31 December 2008</b>				<b>1,984</b>

## Annex 2. Budget 2008-2010

<b>Society</b>	<b>Budget</b>	<b>Expenses</b>	<b>Budget</b>	<b>Budget</b>
	<b>2008</b>	<b>2008</b>	<b>2009</b>	<b>2010</b>
<b>Scientific Committee (SciCom):</b>	<b>4,500</b>	<b>0</b>	<b>1,500</b>	<b>3,000</b>
Chairman	1,500	0		1,500
Chairman Contingency	1,500	0		
Secretary	1,500	0	1,500	1,500
<b>SciCom Meetings:</b>	<b>4,000</b>	<b>6,893</b>	<b>4,000</b>	<b>4,000</b>
SciCom Cont. Osijek	4,000	6,576		
SciCom Cont. Volterra			4,000	
SciCom Cont. Kaposvar		317		4,000
<b>Working Groups</b>	<b>43,000</b>	<b>23,487</b>	<b>56,000</b>	<b>35,500</b>
Biological Control of Weeds	2,000	2,766	2,500	2,500
Crop-Weed Interactions	2,500	1,172	2,500	2,500
European Weed Mapping				2,500
Germination & Early Growth		4,823	2,500	2,500
Herbicide Resistance	2,000		7,500	5,500
Invasive Plants	5,000	4,390	5,500	2,500
Optimisation of Herbicide Dose	2,000		7,500	2,500
Parasitic Weeds	2,500	5,000	2,500	2,500

<b>Society</b>	<b>Budget 2008</b>	<b>Expenses 2008</b>	<b>Budget 2009</b>	<b>Budget 2010</b>
Physical and Cultural Weed Control		1,200	7,500	2,500
Site-Specific Weed Management		1,489	2,500	2,500
Weeds and Biodiversity	2,000	277	5,500	2,500
WM Arid & Semi-Arid Climates		2,371	7,500	2,500
WM Systems in Vegetables			2,500	2,500
<b>Extra for all WG's together</b>	<b>25,000</b>			
<b>Education &amp; Training</b>	<b>0</b>	<b>-722</b>	<b>7,500</b>	<b>3,500</b>
<b>EWRS Symposia:</b>	<b>0</b>	<b>0</b>	<b>5,000</b>	<b>0</b>
15 <sup>th</sup> EWRS Symp., Kaposvar 2010			5,000	0
<b>Subsidy other Symposia:</b>	<b>9,000</b>	<b>11,561</b>	<b>0</b>	
Vancouver 2008	9,000	11,561		
<b>Junior Scientists</b>		<b>10,463</b>	<b>6,500</b>	<b>10,000</b>
EWRS Junior Scientists Hamar 2007		463		
EWRS Junior Scientists Vancouver 2008		10,000		
EWRS Junior Scientists Aquatic Weeds Symp. Finland 2009			4,000	
EWRS Junior Scientists Int. Conf. Paras. Weeds Turkey 2009			2,500	
EWRS Junior Scientists Kaposvar 2010				10,000
<b>Executive Committee (ExCom):</b>	<b>9,000</b>	<b>3,795</b>	<b>5,200</b>	<b>5,300</b>
President	3,000			0
President Contingency	2,500	897		
Past Pres. - External Relations	2,500		1,000	1,500
Secretary	1,000		1,500	1,500
Treasurer / Membership Officer (Office Consumables)	1,500	550	1,500	750
Accountant Foundation audit	1,000	893	1,200	900
Financial Committee		814		
Constitution Committee		642		
Archive Committee				
<b>Board Meetings:</b>	<b>5,000</b>	<b>5,673</b>	<b>5,000</b>	<b>5,000</b>
Board Cont. 2008 Osijek				
Board Cont. 2007 Madrid	5,000	128		
Board Cont. 2008 Osijek		5,232		
Board Cont. 2008 Frankfurt		313		
Board Cont. 2009 Volterra			5,000	
Board Cont. 2010 Kaposvar				5,000
<b>Treasurership/Membership Office:</b>	<b>15,679</b>	<b>16,025</b>	<b>16,000</b>	<b>16,300</b>
<b>Newsletter:</b>	<b>8,000</b>	<b>3,442</b>	<b>2,000</b>	<b>2,000</b>
Newsletter production	4,000			
Newsletter postage	2,000	442		
Editor	2,000	3,000	2,000	2,000
<b>Website</b>	<b>2,500</b>	<b>1,296</b>	<b>2,000</b>	<b>2,000</b>
<b>Taxes &amp; Postage</b>	<b>600</b>	<b>2,830</b>	<b>1,100</b>	<b>1,100</b>
Taxes	100	94	100	100



<b>Society</b>	<b>Budget 2008</b>	<b>Expenses 2008</b>	<b>Budget 2009</b>	<b>Budget 2010</b>
Postage	500	2,735	1,000	1,000
<b>Various:</b>	<b>4,000</b>	<b>5,870</b>	<b>500</b>	<b>1,795</b>
Notary Society Constitution		2,426		795
Printing WG booklet		1,523		1,000
Printing material WSSA		1,921		
<b>Others:</b>	<b>1,000</b>	<b>586</b>		<b>500</b>
<b>Expenditure</b>	<b>117,779</b>	<b>91,199</b>	<b>113,300</b>	<b>89,995</b>

[Back to Content](#)

### Annex 3. EWRS Membership

<b>Ordinary Members 04-11-2009</b>	<b># Countries</b>	<b># Members</b>	<b>% of Total</b>
Central and Eastern Europe and Former Soviet Republic	<b>15</b>	<b>152</b>	<b>28 %</b>
Rest of Europe	<b>20</b>	<b>310</b>	<b>57 %</b>
Rest of the World	<b>19</b>	<b>79</b>	<b>15 %</b>
<b>Total</b>	<b>54</b>	<b>541</b>	<b>100 %</b>

### Annex 4. EWRS Membership dynamics 2007-2008

<b>Membership Dynamics 31 Dec 2007 - 08 Nov 2009</b>	<b>New Members</b>	<b>Cancellations</b>	<b>Re-enrolment, Suspension, RTS</b>	<b># Ordinary Members Total</b>
Central and Eastern Europe and Former Soviet Republic	<b>4</b>	<b>3</b>		<b>152</b>
Rest of Europe	<b>22</b>	<b>26</b>		<b>310</b>
Rest of the World	<b>9</b>	<b>5</b>		<b>79</b>
<b>Total</b>	<b>35</b>	<b>34</b>	<b>(8)</b>	<b>541 (532)</b>
% change since 31 Dec 2007				<b>ca + 2 %</b>

[Back to Content](#)

## SCIENTIFIC COMMITTEE AND WORKING GROUPS

### REPORT OF THE EWRS WORKING GROUP HERBICIDE RESISTANCE

By Anne Thompson, working group coordinator; [anthompson@dow.com](mailto:anthompson@dow.com)

The EWRS Herbicide Resistance Working Group meeting was held on the 18 May 2009 at the Ghent Symposium. The meeting was well attended with the highest turn out recorded. The current situation in each country was discussed with presentations by Stephen Moss (UK), Christophe Delye (France) Laura Carabel and Alberto Collavo (Italy) Andreu Taberner (Spain) Isabel Calha (Portugal) Els Merchant (Belgium) Baruch Rubin (Israel) Solvejg. Mathiaseen (Nordic).

Grass weeds continue to increase in resistance in every country especially *Alopecurus myosuroides* and *Lolium spp.* In the UK >250 cases of resistance to Atlantis (mesosulfuron and iodosulfuron) in pot tests. Target site Pro<sub>197</sub> confirmed in seven cases and one Trp<sub>574</sub>. Enhanced metabolism is widespread. It was demonstrated that flufenacet + diflufenican was more effective than prosulfocarb on resistant populations.

In France both *A.Myosuroides* and *Lolium spp.* resistance to ALS inhibitor herbicides is well developed. *Lolium* are also showing resistance to glyphosate.

In Italy increasing resistance to ACCase inhibitor and ALS herbicides in *Avena sterilis* and *Lolium spp.* In broadleaf weeds *Papaver rhoeas* resistance to ALS herbicides is widespread and some *Sinapis arvensis* resistance. In rice they have seen the first case of *Echinochloa crus-galli* resistant to ALS inhibitors and with a wide cross resistance pattern.

In Nordic NORBARAG was formed in 2007 and had the first meeting in 2008. Denmark resistance in *Stellaria media*, *P.Rhoeas* and *A.Myosuroides*, Sweden *A.Myosuroides*, Norway *S.Media*, *Sonchus spp.*, *Matricaria inodorum*, *Galeopsis tetrahit*, Finland *S.Media* ACCase resistant *A.myosuroides* in Denmark and starting to see a few survivors to SU's.

In Israel there is an increasing resistance to ACCase inhibitors in *Lolium rigidum*, *Phalaris paradoxa*, *Phalaris minor* and *Avena Sterilis*. Increasing numbers of Atlantis failures in *Lolium rigidum*. ALS resistance in broadleaf weeds is increasing and now seen in *Diploaxis eruocides*, *Capsella bursa pastoris*, *Amaranthus spp.*, *Chrysanthemum coronarium*, *Chrysanthemum spp.* *Lolium* may be showing resistance to ALS ACCase and glyphosate herbicides.

In Spain there has been an increase in glyphosate resistance in *Lolium* and *Conyza* Belgium reported work on metamilon resistance in *Chenopodium* and *A.myosuroides* resistance to ALS inhibitors.



A presentation was given on the situation in Eastern Europe. In Poland there are many cases of PS11

resistance, also resistance in *Apera spica-venti* and *Conyza Canadensis* to ALS inhibitors. *A.Myosuroides* resistance to ACCase, ALS and chlortoluron has been seen. In Hungary many PS11 herbicide resistance instances in broadleaf weeds has been noted. *Cirsium arvense* resistance to auxins and ALS inhibitors has been detected. In the Czech Republic many PS11 cases in broadleaf weeds and resistance to ALS inhibitors seen in *Kochia scoparia* and *Apera spica venti*. In the latter- there were problems with reduced efficacy in 20% of the farms tested and there is a combination of target site and metabolic resistance expected. *A.myosuroides* is rare in Czech but strong resistance to Atlantis has been seen

## **REPORT OF THE 12<sup>TH</sup> EWRS INTERNATIONAL SYMPOSIUM ON AQUATIC WEEDS 2009**

The 12<sup>th</sup> EWRS Symposium on Aquatic Weeds was held from 24 to 28 August in Jyväskylä, Finland. Finland is called "the country of thousand lakes". However, officially this number is much higher, i.e. 187'888, whereby only lakes with an area of more than 0.5 hectares are taken into account. The area of 47 lakes even exceeds one hundred square kilometres. In the lakes there are 98'050 islands, implying that the total length of the shoreline is more than 215'000 km. On average, Finnish lakes are only 7.2 metres deep; the deepest point measured, 95 m, is in lake Päijänne. In addition, there are plenty of rivers in Finland and the total length of their banks is approximately 53'000 km.

The fresh water lakes and the rivers form habitats for various species of aquatic macrophytes. Moreover, the brackish Baltic Sea and Gulf of Finland are also unique ecosystems for fresh water macrophytes, as well as for marine macro-algae. The total length of the Finnish coastline is about 46'000 km and in an area near the coast where the sea is relatively shallow, another 80'000 islands can be found. We can easily claim, therefore, that Finland is a country where conditions for aquatic plant growth are quite ideal. Lakes and rivers have always had a significant role in the Finnish way of life; first as waterways and fishing grounds, and later as sources of energy, supplies of drinking water and places of recreation.

In 1960, the former European Weed Research Council (EWRC) was established and transformed 1975 into the EWRS. The first Working Group under EWRC was the WG on Aquatic Weeds. The main activity of the Aquatic Weed WG during the last 40 years was the organisation of international symposia; the first one was held in 1964 and the most previous one 2002 in Moliets et Maâ in France. Although aquatic weeds increasingly became a matter of secondary importance within the EWRS, the aquatic weeds symposia remained a popular platform for scientists working on aquatic plants all over the world. In fact it had become the most prestigious series of international symposia on aquatic macrophytes. Eventually, Arnold Pieterse, retired from Royal Tropical Institute in Amsterdam, and Seppo Hellsten from the Finnish Environment Institute (SYKE) took the lead in organising the 12<sup>th</sup> EWRS International Symposium on Aquatic Weeds.

The city of Jyväskylä is situated in the middle of the Finnish lake district and offered excellent facilities for the 12<sup>th</sup> EWRS International Symposium on Aquatic Weeds, which was held during the period August 24-28 2009. The main theme of the symposium was "Aquatic invasions and their relation to environmental changes", with the following specific sessions:

- Biology, ecology and distribution of aquatic plants
- Indicator value of aquatic plants
- Management of aquatic vegetation and side effects
- Invasive plants and their ecological effects
- Environmental management in relation to aquatic plant development
- Aquatic vegetation and environmental relationships
- Practical uses

More than a hundred participants, representing all continents and almost thirty nationalities, participated. Hopefully this "Finnish experience", by means of the extensive programme consisting of oral and poster presentations, an excursion to nearby lakes around Jyväskylä and the opportunity of meeting colleagues with similar interests and scientific backgrounds, will be worthwhile. The University of Jyväskylä was providing the venue in the magnificent Agora building, situated at a beautiful site along lake Jyväskylä.

The Symposium was organised by the EWRS through its Working Group on Invasive Plants, in collaboration with the Working Groups on Macrophytes and Wetlands of the International Society of Limnology (SIL), as well as the Finnish Environment Institute (SYKE). Realisation of Aquatic Weeds 2009 would have never been possible without the unselfish, voluntary work by Dr. Arnold Pieterse. He has

worked restlessly for our common goal from September 2007, when the first ideas of revitalising this symposium series were put forward, and earns our sincere thanks.

The Abstracts of all contributions are published in the report series of SYKE (see below). Moreover, a special issue of *Hydrobiologia* will compile some full papers. The participants were encouraged to offer their papers to the journal *Weed Research*, too.

EWRS sponsored 5 young scientists to participate the symposium. A total amount of 4'000 € was spent for travelling, accommodation, conference fee and an annual EWRS membership fee for young scientists from Estonia, Japan, Russia, Spain and Sri Lanka. We give a hearty welcome to these new EWRS members! Ricardo Labrada, retired officer of the FAO plant protection service, was invited speaker. He gave a talk about "Major aquatic weeds in tropical and sub-tropical countries and their management". Further on he held an evening – seminar on "Weed risk assessment procedures".

We only got positive comments about the symposium. The Scientific Committee of the Symposium has decided to continue with this series: The 13<sup>th</sup> EWRS Symposium on Aquatic Plants is planned for 2012 in Poznań, Poland. Krzysztof Szoszkiewicz of Poznań University of Life Sciences will be the responsible organiser. The slightly revised name of the symposium, i.e. Plants instead of Weeds, was considered better to express the current scope of the event.

Proceedings (available as pdf format)

**Pieterse, A., Rytönen, A-M., Hellsten, S.** (eds.). 2009.

Aquatic weeds: Proceedings of the 12<sup>th</sup> European Weed Research Society Symposium. Helsinki, Finnish Environment Institute. 177 p. ISSN 1796-1718.

<http://www.ymparisto.fi/default.asp?contentid=332257&lan=en>

Christian Bohren  
WG coordinator

Jukka Salonen  
National representative of EWRS



**Picture 1:** More than 100 participants from all continents attended the 12<sup>th</sup> EWRS Symposium on Aquatic Weeds (Picture by Anne-Mari Rytönen)

[Back to Content](#)



**Picture 2:** The Finnish lake district offered excellent facilities to study aquatic macrophytes. (Picture by Christian Bohren)



**Picture 3:** Five young scientists were subsidised by EWRS to participate the symposium in Jyväskylä. (Picture by Jukka Salonen)

### **EWRS WORKING GROUP ON INVASIVE PLANTS**

Christian Bohren; Co-ordinator EWRS WG on Invasive Plants; [christian.bohren@acw.admin.ch](mailto:christian.bohren@acw.admin.ch)

The International Ragweed Society is reality! The International Ragweed Society was created in the beginning of October 2009. One aim of the Association shall be to facilitate collaboration, research, education, information, technical development, practical applications and laws concerning ragweed and its direct and indirect impacts, as well as control of that plant. Everybody concerned with ragweed is invited:

We will organize a new general assembly in NYON near Lausanne in Switzerland on **Sunday 6 December** between 14h30 and 17h.

If you are interested I can send you the minutes of the first general assembly and of the committee meeting and the statu. Please not that the following day there will be a one-day workshop 'Towards sustainable management of *Ambrosia artemisiifolia* in Europe' in Delémont, Switzerland (see p. 18 of this Newsletter).

Please find below the official invitation. Please send this information around to anyone you think might be interested in joining the International Ragweed Society.

#### **Invitation to the 1<sup>st</sup> General Assembly**

Location: Research Station Agroscope Changins Wädenswil ACW, Route de Duillier, CH- 1260 Nyon

In the conference room, please follow the signs

Date / time: 6 December 2009, 14.30 to 17.00

Contact: Christian Bohren, mobile +41 79 659 47 04

Proposed agenda:

- A) Introduction of the committee
- B) Structure of the society
- C) Election of additional committee members
- D) Corporate Identity
- E) Outline of strategies (goals, working groups)
- F) First project ideas
- G) Varia

## Travel

Nearest railway station is Nyon. For timetable trains see [www.sbb.ch](http://www.sbb.ch).

Please phone as soon as you are on the train to Christian Bohren +41 79 659 47 04 for pick up in Nyon  
For the committee of International Ragweed Society  
Christian Bohren

Please send a mail before 4 December 2009 to [christian.bohren@acw.admin.ch](mailto:christian.bohren@acw.admin.ch) if you wish to attend the general assembly

[Back to Content](#)

## INVITATION TO HOST THE 16<sup>TH</sup> EWRS SYMPOSIUM IN 2013

Dear EWRS members,

as you all know, EWRS Symposia represent the most important forum of our Society for meeting, interacting, and discussing weed science-related issues with scientists from all over Europe and overseas.

The 16<sup>th</sup> EWRS Symposium is scheduled for 2010. If you are interested in hosting this important event, please send a letter of intent (by e-mail) to the Scientific Secretary **before 15 January 2010**. In order to give the EWRS Scientific Committee a sound basis for evaluating the received proposals, please indicate:

- The requirements (visa, health insurance, etc.) to enter your country
- The situation, size, and facilities of the venue
- The accommodation facilities for participants (estimated cost range)
- The public transport facilities (international connections, e.g. airports, railway stations, etc.)
- The names of the local EWRS members who are willing to actively participate in the Programme Committee
- Any other issue that might play in favour of your suggested venue

The EWRS Scientific Committee will actively help to organise the Symposium in close connection with the Programme Committee and will provide seed money for the event. As usual, all Working Groups of the EWRS Scientific Committee will offer their assistance to put together the Scientific Programme of the Symposium. The venue selected to host the 16<sup>th</sup> EWRS Symposium will be announced during the closing session of the 15<sup>th</sup> EWRS Symposium (Kaposvár, Hungary, 11-16 July 2010).

I look forward to receiving your proposals!

Prof. Dr Paolo Bàrberi  
EWRS Scientific Secretary  
Land Lab, Scuola Superiore Sant'Anna  
Piazza Martiri della Libertà 33  
I-56127 Pisa, Italy  
Tel. +39-050-883.525  
Fax: +39-050-883.526  
E-mail: [barberi@sss.it](mailto:barberi@sss.it)

---

## MEMBER CONTRIBUTIONS

---

### CLOSE-UP OF *ADONIS ANNUA* L.

Dear Colleagues,

For the first time in my contribution series for the EWRS Newsletter, I wanted to take care of the red list species *Adonis aestivalis* L.. I had to learn, however, that species of this list may be really rare. When I asked for seeds of *A. aestivalis* L. I got *Adonis annua* L. (Bayer Code : ADOAN). This species does not seem to be endangered. Only when the plant flowered, I found out that it was neither *Adonis flammea* Jacq. nor *A. aestivalis* L.. I had, however, already cut some plants in pieces and I had looked at the histological specialties. I assume that there are no major differences between these species, but I will continue asking for the right seeds. When I explained one of my American colleagues why I was interested in rare weeds, he asked me why we call representatives of the red list weeds at all. They don't fit the definition of weeds: most of them look attractive, some are even grown as ornamentals or are used for breeding purposes, i.e. they are actually liked. Most of them don't compete with crops on arable land, at least in Central Europe. Adonis plants usually contain cardenolides, e.g. strophantic glycosides which make them rather poisonous. Animals may die after eating plants of the genus Adonis. However, this doesn't prevent us from liking them. Why do we call them weeds then?

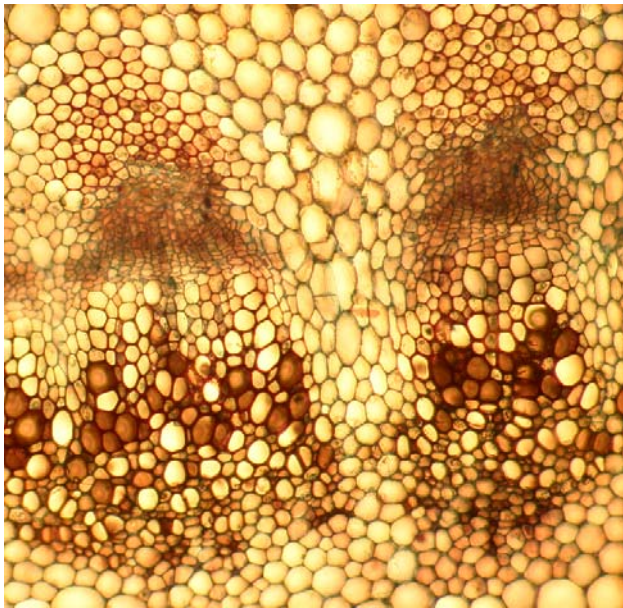
But let me come to my observations.  
This is the plant I tried to analyse:



There are some features I looked at:



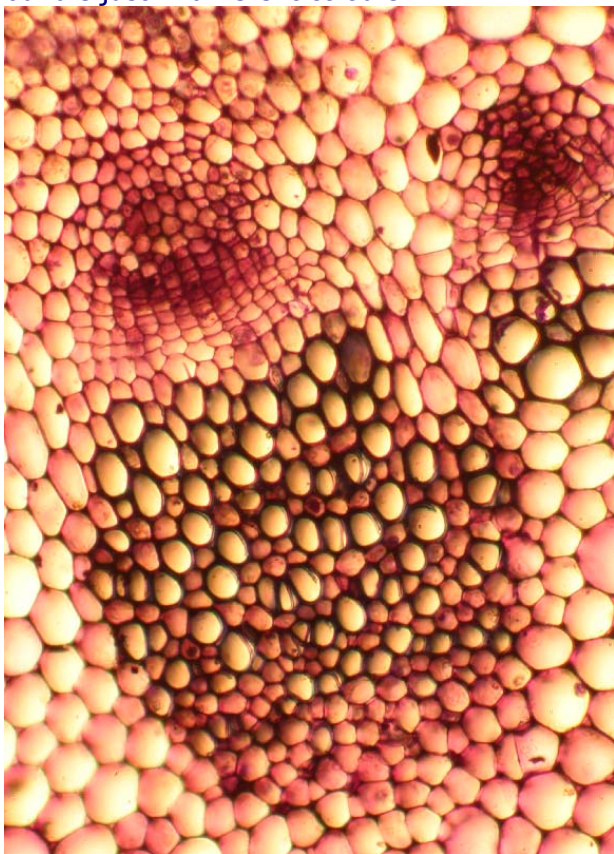
You recognize the vascular bundles by the light reflecting xylem portions arranged in a ring at the outer part of the stem section. The centre is filled with pith consisting of parenchyma cells. When you magnify the vascular bundle area to around 110-fold and when you stain your section in a modified Etzold-mixture (astra blue, chrysoidine, safranine, brilliant green), you can observe what is shown in the next picture, two vascular bundles are shown. On top of the section of the left corner you see one to two layers of parenchyma cells. These are followed by reddish/brown phloem fibres. The phloem is characterised by elements with bluish/gray cell walls just below. A layer of dividing and differentiating cells separates phloem and xylem. Quite a number of vessels are filled with phenols.



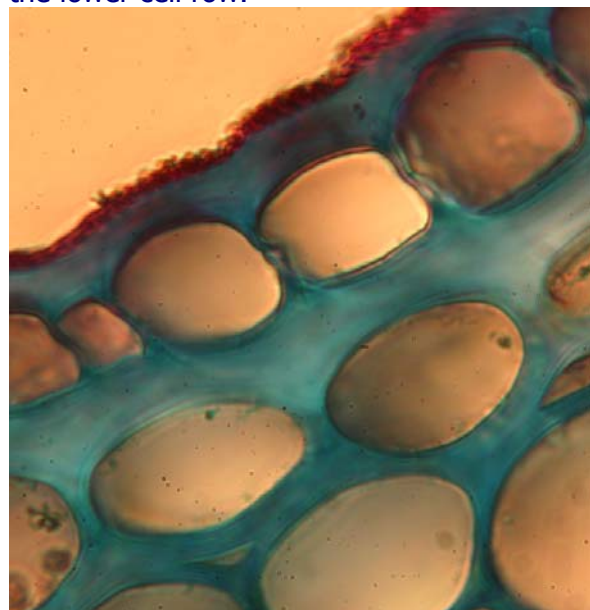
Staining with toluidine blue shows the vascular bundle just in different colours:



This part is enlarged in the next section:  
The cuticula is stained orange, cellulose blue.  
Layers of cellulose can be seen in the cell walls of the lower cell row.



The next section visualizes the location of the bundles close to the outer surface. Above the phloem fibres are cells with thick secondary cell walls (blue). The cell layer next to the epidermis is surrounded by thick cell walls also.



In the next issue, I will present a few slides on *Alopecurus myosuroides* Huds..

Hansjörg Krämer  
[Hansjoerg.Kraehmer@bayercropscience.com](mailto:Hansjoerg.Kraehmer@bayercropscience.com)

[Back to Content](#)



## **LIST OF BOOKS AND JOURNALS FOR DISPOSAL:**

Contact Davis Clay; [dvclay@gmail.com](mailto:dvclay@gmail.com)

Anyone interested in these Journal issues, books and abstracts, please contact me.

### **Aspects of Applied Biology series**

- 3, 1983. Crop Sensitivity to Herbicides.
- 4, 1983. Influence of Environmental Factors on Herbicide performance and Crop and Weed Biology.
- 5, 1984. Weed Control and Vegetation management in Forests and Amenity Areas. (2 copies).
- 8, 1984. Weed Control in Fruit Crops.
- 10, 1985. Field Trials Methods and Data Handling.
- 11, 1986. Biochemical and Physiological Techniques in Herbicide Research.
- 12, 1986. Crop Protection in Vegetables
- 14, 1987. Studies of Pesticide Transfer and Performance.
- 16, 1988. The practice of weed control and vegetation management in forestry, amenity and conservation area.
- 29, 1992. Vegetation Management in Forestry, Amenity and Conservation Areas.
- 44, 1996. Vegetation Management in Forestry, Amenity and Conservation Areas.
- 48, 1997. Optimising Pesticide Applications.
- 49, 1997. Biomass and Energy Crops.
- 58, 2000. Vegetation Management in Changing Landscapes.

### **British Crop Protection Council Symposium Series**

- 7, 1973. 2<sup>nd</sup> Symposium on Herbicides in British Fruit Growing.
- 27, 1984. Soils and Crop Protection Chemicals.
- 47, 1991. Pesticides in Soils and Water: Current perspectives.
- 50, 1992. Set-Aside
- 64, 1995. Weeds in a Changing World.
- 74, 2000. Predicting Field Performance in Crop Protection.
- 77, 2001. The Worlds Worst Weeds.
- 78, 2001. Pesticide Behaviour in Soils and Water.
- BCPC Occasional Publication Series No. 3. The Influence of Weather on the Efficiency and Safety of Pesticide Applications: The Drift of herbicides. Eds: Elliott & Wilson.

### **British Weed Control Conference Proceedings: 1960 – 1974**

### **BCPC Crop Protection Conference – Weeds, 1976 – 1987.**

### **Brighton Crop Protection Conference – Weeds, 1989 – 1997, 2001.**

### **European Weed Research Society Symposium Series**

- 1973. Herbicides in the Soil.
- 1988. Factors affecting herbicidal activity.

### **EC Experts Group Meetings.**

- 1985. Weed Control on Vine and Soft Fruits.
- 1986. Weed Control in Vegetable Production.
- 1988. Importance and Perspectives on Herbicide-resistant weeds.

### **Crop Protection in Northern Britain Conference Proceedings; 1993**

### **Annals of Applied Biology Supplement: Tests of Agrochemicals and Cultivars.**

- Numbers 2 (1981) to 22 (2000)

### **Weed Research Organization: Biennial Reports 1965 to 1983**

### **Books**

- Physiological Processes Limiting Plant Productivity. Ed. C B Johnson, Butterworths, 1981.
- MAFF Reference Book **347**, Pesticide Residues. HMSO, 1990.
- Herbicide Bioassays. Eds. Streibig & Kudsk, CRC Press, 1993.

### **'Weed Research' journal Vol. 19 (1979) – 47 (2007).**

[Back to Content](#)

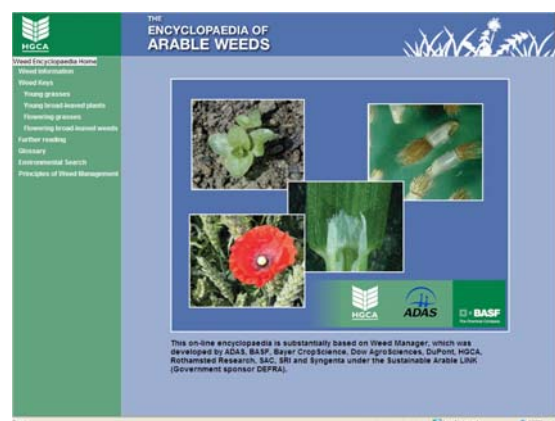
## REVIEWS

### THE ENCYCLOPAEDIA OF ARABLE WEEDS

June 2009 saw the completion of work to produce an on-line and printed version of The Encyclopaedia of Arable Weeds. Jointly funded by HGCA and BASF this pulls together information previously developed in the Weed Manager LINK project ([www.weedmanager.co.uk](http://www.weedmanager.co.uk)).

This definitive guide to arable weeds in the UK has both print and online editions. It is an essential tool for successful weed management containing:

- Full colour: photographs for identification, location map and lifecycle information
- Biology and management information
- **Print version:** for field use containing 100 weeds
- **Online:** identification tool and more detailed information on over 140 weeds



This encyclopaedia has been produced to fill the gap that exists in currently available information and to provide users, in easy to use formats, with a better understanding of weeds, their distribution and biological characteristics together with the best agricultural practice and the impact and importance of both cultural and herbicide use.

It is not a manual on 'how to do it', but a source of reference based on an accumulation of research and information about the weeds, their identification and growing habits, to help the user identify problem weeds and plan their crop management.

Crop production is a competitive balance between crop and weed for light and nutrients. A weed is a plant in an undesired place. It can often grow and reproduce aggressively and/or harbour and spread pests or pathogens which infect or degrade the quality of crops. Some can cause skin irritation or are hazardous if eaten. Although many weeds have undesirable consequences they can also provide feed for birds, are attractive to look at or fulfil a key ecological role.

Understanding weeds and their biology enables more effective management. The Encyclopaedia of Arable Weeds provides an essential tool for weed management in arable rotations.

To use the on-line edition see [www.hgca.com/awe](http://www.hgca.com/awe). The printed version is available from HGCA ([publications@hgca.com](mailto:publications@hgca.com)) and BASF in the UK.

For further information, please contact James Clarke by e-mail [james.clarke@adas.co.uk](mailto:james.clarke@adas.co.uk) or telephone +44 (0)1954 268219.

#### Acknowledgement:

*This encyclopaedia is substantially based on Weed Manager, which was developed by ADAS, BASF, Bayer CropScience, Dow AgroSciences, DuPont, HGCA, Rothamsted Research, SAC, SRI, and Syngenta under the Sustainable Arable LINK (Government sponsor Defra); from which the vast majority of text and images are derived.*

[Back to Content](#)

---

## CALL FOR CONFERENCES

---

### **WORKSHOP "TOWARDS SUSTAINABLE MANAGEMENT OF *AMBROSIA ARTEMISIIFOLIA* IN EUROPE"**

7 December 2009  
Delémont, Switzerland

Common ragweed, *Ambrosia artemisiifolia*, is one of the most damaging exotic weeds in Europe affecting human health, agriculture and biodiversity. Several countries have put in place early detection and management initiatives, but sustainable integrated control strategies to reduce its abundance in already well-infested areas are still missing.

In order to discuss sustainable management of common ragweed in Europe, we would like to invite interested researchers to a meeting to Delémont, Switzerland in December. The meeting will provide an excellent opportunity to get up to date information on Ambrosia research, in Europe and world wide, and on currently applied management concepts. Particular emphasis will be placed on biological control, especially on:

- The potential for classical biological control of Ambrosia in Europe
- Integration of biological control into current management methods
- Risk assessment required for introducing biological control organisms
- European and National legislations and regulations of invasive alien plants and of classical biological control in Europe

More information is available on [www.cabi.org/Ambrosia](http://www.cabi.org/Ambrosia).

### **EWRS EDUCATION AND TRAINING WORKSHOP ON: HOW TO WRITE A PAPER FOR A SCIENTIFIC JOURNAL**

Sunday 11 July from 9:00 to 17:00  
Kaposvár University Guba S. str. 40, H-7400 Kaposvár, Hungary

Instructors: Jon Marshall, Editor-in-Chief Weed Research (Marshall Agroecology, UK) and Jens Carl Streibig, Faculty of Life Sciences, University of Copenhagen.

The Workshop will be held in conjunction with the 15<sup>th</sup> EWRS Symposium (European Weed Research Society), 12-15 July 2010 in Kaposvár, Hungary.

#### **Description**

Science is hard to read and understand and its difficulties are born out of necessity, out of the extreme complexity of scientific concepts, data and analysis. But complexity of thoughts need not lead to impenetrability of expression. We believe that improving the quality of writing actually improves the quality of thought and the quality of the science. Without communicating our work, science cannot advance or be applied where it can make a difference to human endeavour.

The workshop will approach the questions:  
Why publish? When to publish? And where to publish?

The structure of a paper submitted to Weed Research. What is the editor looking for in:

- Title page
- Summary
- Keywords
- Introduction

- Materials & Methods
- Results
- Discussion
- Acknowledgements
- References
- Tables
- Figures
- Appendices
- Supplementary information

Should I do the research and then write, or the other way around?

Each participant should bring a draft manuscript and be prepared to share the draft with others on the course.

Participation to this workshop of the EWRS 'Education and Training' Working Group is free for members of the EWRS and for registrants to the 15<sup>th</sup> EWRS Symposium. Others must pay a workshop registration fee of 60 EURO, which corresponds to the annual membership fee to the EWRS.

Registration will be available online starting December 1<sup>st</sup> at [www.ewrs.org](http://www.ewrs.org). The number of participants is strictly limited to 20, on a first-come, first-served basis. Please apply early.

Jens Carl Streibig  
Professor of Weed Science  
University of Copenhagen  
Email: [jcs@life.ku.dk](mailto:jcs@life.ku.dk)

[Back to Content](#)

### **15<sup>TH</sup> EWRS SYMPOSIUM: SUBSIDY TO YOUNG SCIENTISTS**

The EWRS has decided to allocate a total sum of 10,000 Euro to facilitate participation of young research fellows in the 15<sup>th</sup> EWRS Symposium (Kaposvár, Hungary, 11-15 July 2010). Applicants must comply with the following two conditions: to present an oral or poster paper at the Symposium; to have not previously received a subsidy from the EWRS (e.g. to participate in the 12<sup>th</sup> EWRS Symposium – Papendal, NL 2002; the 7<sup>th</sup> EWRS Mediterranean Symposium –Adana, TR 2003, the 4<sup>th</sup> IWSC – Durban, ZA 2004, the 13<sup>th</sup> EWRS Symposium - Bari, IT 2005 or the 14<sup>th</sup> EWRS Symposium - Hamar, NO 2007).

If you meet these two conditions and are interested in the possibility of getting a partial subsidy from the EWRS, please send your application no later than 15 January 2010 (absolute deadline) by e-mail to the EWRS Scientific Secretary ([barberi@sssup.it](mailto:barberi@sssup.it)). Your application must include:

1. Curriculum Vitae;
2. Budget (estimation of the costs for travel, registration, accommodation and meals, including the costs covered by your home institution);
3. The abstract of your paper (version submitted to the session organisers after notification of acceptance: see first Symposium circular for details on authors duties and relevant deadlines).

Successful applicants will be warned by the EWRS Scientific Secretary in due time. Details on allocation of the subsidy will be provided later by the EWRS Treasurer.

Prof. Dr. Paolo Bàrberi, EWRS Scientific Secretary



**15<sup>th</sup> EWRS Symposium**  
(European Weed Research Society)  
July 12-15, 2010. | Kaposvár, Hungary

**INVITATION**  
We have the great pleasure to announce that the 2010 EWRS Conference will take place in Kaposvár, Hungary.

Kaposvár is located 190 kms from Budapest, in Southern Hungary. Being the seat of Somogy county, Kaposvár has some 70.000 inhabitants and a favourable topographical location amid the various hills of the Transdanubian landscape, in the embrace of River Drava and Lake Balaton. The town can be reached both on the main roads Nr. 61 and 67 and by the frequent train connection from Budapest.

The conference will be held in the campus of the youngest higher educational institutions in Hungary, established in 2000. Kaposvár University is a modern, dynamic and innovative institution situated in a lively and beautiful environment.

Please join us for a rewarding scientific program and an exciting and memorable social experience!

**LOCAL ORGANISER**  
Gabriella Kazinczi DSc  
EWRS national representative | Kaposvár University  
kazinczi.gabriella@ke.hu

**VENUE**  
Kaposvár University  
Guba S. str. 40, H-7400 Kaposvár, Hungary

**ABSTRACT**  
Authors are kindly encouraged to submit a short summary (250 words) of their intended contributions together with the preliminary registration, through the Symposium official website. Contributions will be refereed and published in the Proceedings, which will be available at the Symposium.

**THE SCOPE OF THE SYMPOSIUM**  
Offers of papers in all areas of weed science (crop and non-crop situations) are welcome. We also welcome contributions in current innovative and emerging areas, including research methodologies and environmental aspects.

**WORKSHOPS**  
A number of workshops on specific topics of weed science will be organised as satellite meetings. The EWRS Working Group Education and Training will organise a workshop on "How to write a paper for a scientific journal". If you have a suggestion for workshop topics, please contact the Symposium Secretariat.

**SPONSORS & EXHIBITION**  
Space on the official website and in all official documents is available to interested companies and institutions. Desks or stands for material exhibition will be available to interested companies at the Symposium venue. Please contact the Symposium Secretariat for further information.

**IMPORTANT DATES**  
September 15, 2009  
Submission of preliminary abstracts (max 250 words). Release of call for junior scientists subsidy. Preliminary registration

November 15, 2009  
Communication of paper acceptance and definition of preliminary programme. Registration opens

January 15, 2010  
Submission of abstracts to session organisers for review. Deadline for early bird registration. Submission of applications for junior scientists subsidy. Release of 2nd circular with detailed programme

March 15, 2010  
Submission of revised one-page text abstracts

March 31, 2010  
Deadline for standard registration. Communication of junior scientists subsidies to awardees

July 12-15, 2010  
15th EWRS Symposium

**SYMPOSIUM SECRETARIAT**  
Kaposvár University, Public Relations and Events Office & ASSZISZTENCIA Congress Bureau  
ewrs@asszisztencia.hu

**PRE-REGISTRATION**  
You are invited to pre-register by 15 September 2009 at the official Symposium websites:

[www.ewrs.org](http://www.ewrs.org)  
[www.asszisztencia.hu/cwrs](http://www.asszisztencia.hu/cwrs)

**FIRST CIRCULAR**

[Back to Content](#)

### 3<sup>RD</sup> CONFERENCE ON PRECISION CROP PROTECTION

19-21 September 2010  
Bonn, Germany

We cordially invite you to attend the 3<sup>rd</sup> Conference on Precision Crop Protection to be held in Bonn from 19 to 21 September 2010. The scientific conference will cover all major aspects of Precision Crop Protection. The program will include invited Keynote speakers, oral presentations and posters. Take this opportunity to gain an impression of the progress and future potential of this innovative and expanding field of agricultural science. We welcome you all to Bonn and we are looking forward to meeting you. Your active participation will make this conference an exciting scientific event. Please send this information to anyone who you think would be interested in attending.

The conference will cover all aspects of the site-specific and early detection and control of pests using modern and innovative technologies:

#### Contributions

Authors are invited to submit abstracts of max. 350 words, related to one of the conference topics. Please submit your abstract(s) via our website [www.precision-cropprotection.uni-bonn.de](http://www.precision-cropprotection.uni-bonn.de), or send it by e-mail to [ec-oerke@uni-bonn.de](mailto:ec-oerke@uni-bonn.de). Deadline for submission: 15 May 2010

## **Conference Book**

Abstracts of all contributions, whether oral or poster presentations, will be provided in printed form to all participants during the conference.

## **Conference fees**

- Participants 120 €
- Students 60 €

(includes Welcome Reception, Conference Dinner, and Coffee Breaks). Limited financial support is available for young scientists actively participating in the conference.

## **Post-Conference Tour**

It is intended to have a 1-day excursion on 22 September. Details will be given in the Second Circular.

## **Accommodation**

The Conference will be held at the G. Stresemann Institute Hotel in Bonn. The hotel is able to provide accommodation for all participants at a special package price which includes room, breakfast, lunch, and dinner. Cost of a single room is 90 € p.p./day. Reservations have to be made to the conference organizers. Deadline for hotel registration: 20 July 2010.

## **Venue**

G. Stresemann Institute, Langer Grabenweg 68, D-53175 Bonn-Bad Godesberg  
Tel. ++49 (0) 228 / 8107-0; Fax ++49 (0) 228 / 8107-197; <http://www.gsi-bonn.de>

## **Organising team**

Dr. Erich-Christian Oerke

Mrs. Ingrid Sikora

Tel.: ++49 (0) 228 73 24 50

E-mail: [ec-oerke@uni-bonn.de](mailto:ec-oerke@uni-bonn.de)

For more information, the second circular (February 2010) and registration please visit the following website: [www.precision-crop-protection.uni-bonn.de](http://www.precision-crop-protection.uni-bonn.de)

[Back to Content](#)

## **21<sup>ST</sup> COLUMA CONFERENCE; INTERNATIONAL MEETING ON WEED CONTROL**

8-9 December 2010

Dijon, France

Special emphasis will be put upon current areas of interest: evolution in plant protection legislation and impact on weed control, biodiversity, present and future solutions to prevent pollution in air, soil and water, genetic resistance of cultivated plants. The session tropical and Mediterranean Crops will be organized in cooperation with the French-speaking Association for Plant Protection (AFIPP), and a special attention will be paid to the weed management in the concerned areas.

Those interested in presenting a paper must complete the "Call for paper" form and return it promptly, at the latest before March 12th 2010. All submitted papers accepted by the scientific committee will be presented as an oral communication or a poster in the different sessions. All papers must be sent as a written text and will be published in the Conference Annals (a cd-rom with the texts and a book of abstracts) to be received by participants. The official languages are French or English. After evaluation by the reading committee, the definitive corrected texts must be returned no later than October 1<sup>ST</sup> 2010. After this date, no paper will be accepted.

More information can be found on the following website: <http://www.afpp.net/calendrier.htm>

## **ASSOCIATION OF APPLIED BIOLOGISTS CONFERENCES**

The following list of conferences has been proposed by the Association of Applied Biologists:

### **15-16 December 2009**

Plant Microbial Interactions: positive and negative interactions in relation to agricultural and natural ecosystem function. Olde Barn Hotel, Grantham, UK (AM&B Group)

### **5–7 January 2010**

International Advances in Pesticide Application. Robinson College, Cambridge, UK (Pesticide Application Group)

### **27-29 April 2010**

Agri-Environment schemes – what have they achieved and where do we go from here? University of Leicester, Oadby, UK (CATE Group)

More information can be found on the following website:

[www.aab.org.uk/contentok.php?id=184&basket=wwshowconflist](http://www.aab.org.uk/contentok.php?id=184&basket=wwshowconflist)

## **3<sup>RD</sup> SYMPOSIUM ON ENVIRONMENTAL WEEDS AND INVASIVE PLANTS**

2-7 October 2011

Ascona (Ticino), Switzerland

Central themes of the Symposium will be: Mapping, Early Detection, Public Relation, Funding, Control Methods. For more information on this event, please contact [Christian.bohren@acw.admin.ch](mailto:Christian.bohren@acw.admin.ch)

[Back to Content](#)

## **UPCOMING CONFERENCES AND WORKSHOPS**

---

---

### **WORKSHOP "TOWARDS SUSTAINABLE MANAGEMENT OF AMBROSIA ARTEMISIIFOLIA IN EUROPE"**

7 December 2009  
Delémont, Switzerland  
[www.cabi.org/Ambrosia](http://www.cabi.org/Ambrosia)

---

---

### **INTERNATIONAL CONFERENCE ON POSITIVE PLANT MICROBIAL INTERACTIONS IN RELATION TO PLANT PERFORMANCE AND ECOSYSTEM FUNCTION**

15-16 December 2009  
The Olde Barn Hotel, Grantham, Lincs, UK  
<http://www.aab.org.uk/contentok.php?id=86&basket=wwshowconfdets>

---

---

### **INTERNATIONAL ADVANCES IN PESTICIDE APPLICATION.**

5-7 January 2010  
Robinson College, Cambridge, UK (Pesticide Application Group)  
<http://www.aab.org.uk/contentok.php?id=82&basket=wwshowconfdets>

---

---

### **AGRI-ENVIRONMENT SCHEMES – WHAT HAVE THEY ACHIEVED AND WHERE DO WE GO FROM HERE?**

27-29 April 2010  
University of Leicester, Oadby, UK (CATE Group)  
<http://www.aab.org.uk/contentok.php?id=91&basket=wwshowconfdets>

---

---

### **15<sup>TH</sup> EWRS SYMPOSIUM**

11-16 July 2010  
Kaposvár, Hungary  
[www.ewrs.org](http://www.ewrs.org); [www.asszisztencia.hu/ewrs](http://www.asszisztencia.hu/ewrs); [ewrs@asszisztencia.hu](mailto:ewrs@asszisztencia.hu)

---

---

### **EWRS EDUCATION AND TRAINING WORKSHOP ON: HOW TO WRITE A PAPER FOR A SCIENTIFIC JOURNAL**

11 July 2009 from 9:00 to 17:00  
Kaposvár, Hungary  
[ics@life.ku.dk](mailto:ics@life.ku.dk)

---

---

### **3<sup>RD</sup> CONFERENCE ON PRECISION CROP PROTECTION**

19-21 September 2010  
Bonn, Germany  
[www.precision-crop-protection.uni-bonn.de](http://www.precision-crop-protection.uni-bonn.de)

---

---

### **21<sup>ST</sup> COLUMA CONFERENCE; INTERNATIONAL MEETING ON WEED CONTROL**

8-9 December 2010  
Dijon, France  
<http://www.afpp.net/calendrier.htm>

---

---

### **3<sup>RD</sup> SYMPOSIUM ON ENVIRONMENTAL WEEDS AND INVASIVE PLANTS**

2-7 October 2011  
Ascona (Ticino), Switzerland  
[Christian.bohren@acw.admin.ch](mailto:Christian.bohren@acw.admin.ch)

---

---

[Back to Content](#)



---

## **EDITORIAL**

---

### **INSTRUCTIONS FOR CONTRIBUTORS**

**Deadline for contributions to be published in the following Newsletter issue:  
1 January 2010**

#### **Photographic images**

It is possible to include photographic material. Photographs can be processed and scanned. Pictures can be sent as negatives, positives (slides with and without frames) and as original pictures. The easiest to handle are digital pictures, which can be reproduced of a higher quality within the Newsletter. Please make sure that these images are taken at no less than 300 dpi otherwise the picture quality drops.

#### **Questions**

If you have any problems in writing or formatting your article, please do not hesitate to contact me. I'll be happy to assist you. As Technical Editor of the Newsletter, I prepare the final layout of the Newsletter prior to publishing. You can contact me by sending an E-mail to [newsletter@ewrs.org](mailto:newsletter@ewrs.org) / [moonen@sssup.it](mailto:moonen@sssup.it) or by calling me at +39 050 883567. I'm looking forward to receiving your contributions.

Camilla Moonen.

### **CHARGES FOR ADVERTISING MATERIAL IN THE NEWSLETTER**

#### **Advertisements in the Newsletter**

The rate for an advertisement in all four editions of a year is € 400,00 / year / page. Reductions can be negotiated with the Newsletter editor for half page adverts. Maximum 4 pages of adverts in each issue.

[Back to Content](#)

## EWRS BOARD 2008 – 2009

President 2008-2009	Hr. Per <b>KUDSK</b> University of Aarhus Dept of Integrated Pest Management Forsøgsvej 1 DK-4200 SLAGELSE	T + 45 8999 1900 <a href="mailto:per.kudsk@agrsci.dk">per.kudsk@agrsci.dk</a>
Vice President 2008-2009	Dr. HansJoerg <b>KRÄHMER</b> BayerCropSciences AG Industriepark Hoechst H 872 D-65926 Frankfurt am Main	T +49 69 305 2732 F +49 69 305 7342 <a href="mailto:Hansjoerg.Kraehmer@bayercropscience.com">Hansjoerg.Kraehmer@bayercropscience.com</a>
Past President 2008-2009	Dr. Marco <b>QUADRANTI</b> Via Fontana CH-6874 CASTEL S. PIETRO	T +41 91 646 59 54 <a href="mailto:marco.quadranti@solnet.ch">marco.quadranti@solnet.ch</a>
Secretary 2008-2011	Dr. Andrej <b>SIMONCIC</b> Agricultural Institute of Slovenia Hacquetova 17 SI-1000 Ljubljana	T +386 1 280 52 20 T +386 1 280 52 22 <a href="mailto:andrej.simoncic@kis.si">andrej.simoncic@kis.si</a> <a href="http://www.kis.si">www.kis.si</a>
Treasurer 2008-2011	Drs. Ben <b>POST</b> EWRS Membership Office Postbus 28 NL-6865 ZG DOORWERTH	F + 31 26 3706896 <a href="mailto:ewrs@bureaupost.nl">ewrs@bureaupost.nl</a>
Scientific Secretary 2006-2009	Prof. Dr. Paolo <b>BÀRBERI</b> Land Lab/Agroecology Scuola Superiore Sant' Anna Piazza Martiri della Libertà 33 I-56127 PISA	T + 39 050 883 525 F + 39 050 883 526 <a href="mailto:barberi@sssup.it">barberi@sssup.it</a>
Membership Officer	Drs. Ben <b>POST</b> EWRS Membership Office Postbus 28 NL-6865 ZG DOORWERTH	F + 31 26 3706896 <a href="mailto:ewrs@bureaupost.nl">ewrs@bureaupost.nl</a>
Additional Members 2006-2009	Dr. rer. nat. Thomas <b>EGGERS</b> Am Beek 7 D-38108 BRAUNSCHWEIG	T + 49 5309 5858 F + 49 5309 5858 <a href="mailto:Uth.Eggers@gmail.com">Uth.Eggers@gmail.com</a>
2006-2009	Dr. Jukka <b>SALONEN</b> MTT Agrifood Research Finland Plant Protection FIN-31600 JOKIOINEN	T + 358 3 41882483 F + 358 3 41882584 <a href="mailto:iukka.salonen@mtt.fi">iukka.salonen@mtt.fi</a>
2008-2011	Prof. Dr. Bärbel <b>GEROWITT</b> University of Rostock Institute for Land Use Satower Str. 48 D-18051 ROSTOCK	T + 49 381 498 3160 F + 49 381 498 3162 <a href="mailto:baerbel.gerowitt@uni-rostock.de">baerbel.gerowitt@uni-rostock.de</a>
2008-2011	Dr. Gabriella <b>KAZINCZY</b> Pannon University / Institute for Plant Protection Deák F str. 16 HU-8361 KESZTHELY	T + 36 83 545 220 F + 36 83 545 143 <a href="mailto:kg@georgikon.hu">kg@georgikon.hu</a>
WEED RESEARCH Chairman Editorial Board	Dr. Paul <b>HATCHER</b> University of Reading School of Biological Sciences, Plant Science Laboratories GB -READING RG6 6AS	T + 44 118 378 8091 F + 44 118 378 7464 <a href="mailto:p.e.hatcher@rdg.ac.uk">p.e.hatcher@rdg.ac.uk</a>

[Back to Content](#)

## EWRS SCIENTIFIC COMMITTEE

Chairman / EWRS Vice-President  
2008-2009

Dr. HansJoerg **KRÄHMER**  
BayerCropSciences GmbH  
Institute of Herbicide Research and Phyto regulators  
Industriepark Hoechst H 872  
D-65926 Frankfurt am Main

T +49 69 305 2732  
F +49 69 305 7342  
[Hansjoerg.Kraehmer@bayercropscience.com](mailto:Hansjoerg.Kraehmer@bayercropscience.com)

Scientific Secretary  
2006-2009

Prof. Dr. Paolo **BÀRBERI**  
Land Lab/Agroecology  
Scuola Superiore Sant' Anna  
Piazza Martiri della Libertà 33  
IT-56127 PISA

T + 39 050 883 525  
F + 39 050 883 526  
[barberi@sssup.it](mailto:barberi@sssup.it)

EWRS President  
2008-2009

Hr. Per **KUDSK**  
University of Aarhus  
Dept of Integrated Pest Management  
Forsøgsvej 1  
DK-4200 SLAGELSE

T + 45 8999 1900  
[per.kudsk@agrsci.dk](mailto:per.kudsk@agrsci.dk)

## EWRS WORKING GROUPS

Biological Control of Weeds

Dr. Paul **HATCHER**  
The University of Reading,  
School of Biological Sciences, Plant Science Laboratories  
GB-READING RG6 6AS

T + 44 118 378 8091  
F + 44 118 378 7464  
[p.e.hatcher@rdg.ac.uk](mailto:p.e.hatcher@rdg.ac.uk)

Crop / Weed Interactions

Dr. Lammert **BASTIAANS**  
Wageningen University, Dept. Crop and Weed Ecology  
Postbus 430  
NL-6700 AK WAGENINGEN

T + 31 317 48 4770  
F + 31 317 48 5572  
[lammert.bastiaans@wur.nl](mailto:lammert.bastiaans@wur.nl)

Education and Training

Prof. Dr. Jens Carl **STREIBIG**  
University of Copenhagen  
Faculty of Life Science, Department of Agricultural Sciences  
Hoejbakkegaard Allé 13  
DK-2630 TAASTRUP

T +45 35 28 34 57  
F +45 35 28 34 60  
[ics@life.ku.dk](mailto:ics@life.ku.dk)

European Weed Mapping

Dr. HansJoerg **KRÄHMER**  
BayerCropSciences GmbH  
Institute of Herbicide Research and Phyto regulators  
Industriepark Hoechst H 872  
D-65926 Frankfurt am Main

T +49 69 305 2732  
F +49 69 305 7342  
[Hansjoerg.Kraehmer@bayercropscience.com](mailto:Hansjoerg.Kraehmer@bayercropscience.com)

Germination and Early Growth

Hr. Ilse Ankjær **RASMUSSEN**  
University of Aarhus  
Dept of Integrated Pest Management  
Forsøgsvej 1  
DK-4200 SLAGELSE

T + 45 8999 1900  
[ilsea.rasmussen@agrsci.dk](mailto:ilsea.rasmussen@agrsci.dk)

Herbicide Resistance

Ms. Anne **THOMPSON**  
Dow AgroSciences  
Latchment Court, Brand Street  
GB-HITCHIN , Herts, SG5 1NH

T + 44 1462 426649  
F + 44 1462 426664  
[anthompson@dow.com](mailto:anthompson@dow.com)

Invasive Plants

Mr Christian **BOHREN**  
Research Station Agroscope Changins-Wädenswil (ACW)  
P.O. Box 1012  
CH-1260 NYON 1

T + 41 22 363 44 25  
F + 41 22 363 43 94  
[christian.bohren@acw.admin.ch](mailto:christian.bohren@acw.admin.ch)

Optimisation of Herbicide Dose

Hr. Per **KUDSK**  
University of Aarhus, Dept of Integrated Pest Management  
Forsøgsvej 1  
DK-4200 SLAGELSE

T + 45 8999 1900  
[per.kudsk@agrsci.dk](mailto:per.kudsk@agrsci.dk)

[Back to Content](#)

## EWRS WORKING GROUPS (CONTINUED)

Parasitic Weeds	Dr. Maurizio <b>VURRO</b> Istituto di Scienze delle Produzioni Alimentari – CNR Via Amendola 122/O IT-70125 BARI	T + 39 080 5929331 F + 39 080 5929374 <a href="mailto:maurizio.vurro@ispa.cnr.it">maurizio.vurro@ispa.cnr.it</a>
Physical and Cultural Weed Control	Hr. Bo <b>MELANDER</b> University of Aarhus, Dept of Integrated Pest Management Forsøgsvej 1 DK-4200 SLAGELSE	T + 45 8999 1900 <a href="mailto:bo.melander@agrsci.dk">bo.melander@agrsci.dk</a>
Site-Specific Weed Management	Prof. Dr. Svend <b>CHRISTENSEN</b> Inst. of Chemical Eng., Biotechnology and Environmental Tech. University of Southern Denmark Niels Bohrs Allé 1 DK-5230 ODENSE M	T + 45 6550 7361 F + 45 6550 7454 <a href="mailto:svc@kbm.sdu.dk">svc@kbm.sdu.dk</a>
Weed Management Systems in Vegetables	Prof. Dr. Francesco <b>TEI</b> University of Perugia, Dept. of Agricultural and Environmental Sciences Borgo XX Giugno 74 IT-06121 PERUGIA	T + 39 075 585 63 20 F + 39 075 585 63 44 <a href="mailto:f.tei@unipg.it">f.tei@unipg.it</a>
Weeds and Biodiversity	Prof. Dr. Bärbel <b>GEROWITT</b> University of Rostock, Insitute for Land Use Satower Str. 48 DE-18051 ROSTOCK	T + 49 381 498 2200 F + 49 381 498 2199 <a href="mailto:baerbel.gerowitt@auf.uni-rostock.de">baerbel.gerowitt@auf.uni-rostock.de</a>
Weed Management in Arid and Semi-Arid Climate	Prof. Dr. Baruch <b>RUBIN</b> Hebrew University of Jerusalem Faculty of Agricultural, Food and Environmental Sciences RH Smith Inst. Plant Sci. & Genetics I-761000 REHOVOT	T +972 8 948 9248 F +972 8 936 2083 <a href="mailto:rubin@agri.huji.ac.il">rubin@agri.huji.ac.il</a>

[Back to Content](#)