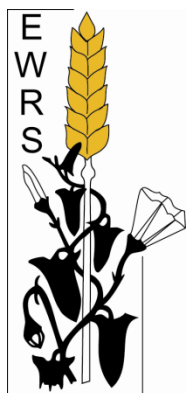


**EUROPEAN WEED RESEARCH SOCIETY**Secretary

Dr. Andrej SIMONČIČ  
Agricultural Institute of Slovenia  
Hacquetova 17  
SI-1000 Ljubljana  
[andrej.simoncic@kis.si](mailto:andrej.simoncic@kis.si)

Newsletter Editor

Dr. Camilla MOONEN  
Land Lab/Agroecology  
Institute of Life Sciences  
Scuola Superiore Sant'Anna  
Piazza Martiri della Libertà, 33  
IT-56127 Pisa  
[newsletter@ewrs.org](mailto:newsletter@ewrs.org)  
[moonen@sssup.it](mailto:moonen@sssup.it)



*Vaccaria hispanica* (Mill.) Rausert (also named *V. pyramidata*) is an annual herbaceous plant belonging to the Caryophyllaceae family. In southern Europe this weed grew typically in dryland winter cereals, germinating in autumn and flowering in spring. In the last decades this weed has become rare and is found in very extensive areas, only. In the picture, the plant was found at important density in a vetch crop in a very dry area of the Zaragoza province (North-eastern Spain). Despite the roots could be used to heal pimples and ulcers it also contains toxic components so that only experts should recommend its medical use. Its rareness suggests this species to be an interesting element of biodiversity (picture and text: Alicia Cirujeda).

## CONTENTS

Contents .....	2
From the Board.....	3
President's Message .....	3
Report of the 37 <sup>th</sup> General Assembly .....	4
EWRS Financial Report 2010 .....	6
Scientific Committee and Working Groups.....	10
Report on the 2 <sup>nd</sup> EWRS Workshop EU – Weed Mapping.....	10
Joint EWRS Working Group Workshop.....	11
Member contributions.....	14
Some remarks on the EWRS Logo history .....	14
Histology of <i>Bryonia dioica</i> .....	16
Call for Conferences .....	18
6 <sup>th</sup> World Congress on Allelopathy .....	18
25 <sup>th</sup> German Conference on Weed Biology and Weed Control .....	18
Interdisciplinary Workshop of the EWRS Working Group Site Specific Weed Management (SSWM) .	19
International Conference Global Herbicide Resistance Challenge 2013 .....	20
Association of Applied Biologists conferences .....	20
Upcoming Conferences and Workshops .....	21
Editorial.....	23
EWRS Board 2010–2011 .....	23
EWRS Scientific Committee 2010-2011.....	24
Instructions for Contributors.....	25
Charges for Advertising Material in the Newsletter.....	25

## EWRS ELECTIONS 2011

PLEASE REMEMBER TO VOTE FOR

- YOUR NEW VICE-PRESIDENT
  - SECRETARY
  - TREASURER

<http://ewrs.bureaupost.eu>

**DEADLINE 14 NOVEMBER 2011**

---

## FROM THE BOARD

---

### PRESIDENT'S MESSAGE

Dear Colleagues,

The new Board for 2012 is about to be elected. It is good to know that we had many excellent nominations for all open positions. I personally wish all candidates good luck and I wish them energy and a positive mood for their new office. They will guarantee the future of our society.

This will be my last message to you as EWRS president. I enjoyed the office very much. The position filled me with pride and I very much appreciated the cooperation with a dedicated team of experts who worked for the subject in the first instance. Our society stays successful despite all kinds of changes. I wish Paolo Bärberi all the best for his new duty. I am sure he will do an excellent job. Many young members contribute to our business today. Please help Paolo with his task to conserve the positive image of EWRS and to attract new members. My special thanks go to Camilla for her diligent Newsletter preparation despite her duties in her job and in her family.

Agriculture presently experiences dramatic changes. Energy plants, especially corn, will have an enormous effect on biodiversity and on changing weed spectra. Andreasen and Streibig recently stressed in *Weed Research* (51, 214-226, 2011) that *Setaria viridis* could get established in Denmark only due to continuous maize cultivation. This crop will have an effect on other invasive plants elsewhere. The number of *Ambrosia* infested corn fields is continuously growing in many parts of Europe. Other invasives are, however, spreading outside of agriculture. For example, *Impatiens grandiflora* is covering huge forest areas. Where it grows, it often grows as a monoculture. Some colleagues claim that it is a good host for bees. This argument can, however, only be regarded as a mere expression of hopelessness when we see how many plant habitats change completely due to the infestation of this single species. All good arguments for habitat conservation lose their value with such soft counter arguments. The new EU regulation 1107/2009 will make it more complicated to register new herbicides and to reregister older ones. This will leave the farmer with less and less tools to control weeds. Mechanical weed control will become more important again and the number of resistant weeds will increase due to the application of only very few herbicides that are left with the same mode of action. This means farmers will need your input as experts.

Weed science will stay important and interesting at the same time. I wish you and our society all the best.

Hansjörg Krähmer

[Back to Content](#)



## **REPORT OF THE 37<sup>TH</sup> GENERAL ASSEMBLY**

Samsun, Turkey  
27 March 2011

Present: Hansjöerg KRÄHMER (Chairman) , Josef SOUKUP, Ben POST, Paolo BARBERI, Gabriela KAZINCZI, and another 3 EWRS members, Jens STREIBIG, Daniel CLOUTIER and Stevan KNEZEVIC

### **GA-37.1 Opening** (H. KRÄHMER)

- H. KRÄHMER welcomed all members. He thanked Husrev Mennan for hosting this meeting.

### **GA-37.1 Communication regarding minutes of the 36<sup>th</sup> GA, 11 July 2010, Kaposvar, Hungary** (H. KRÄHMER)

- Some corrections should be made regarding the last General Assembly minutes.
  - Under GA-36.2 (additional board members) it should read....."for the next four years".
  - Under GA-36.5 e the year for the next EWRS symposium should be 2013.

### **GA-37.2 Report of the Board** (H. KRÄHMER)

- H. KRÄHMER reported about general Board meeting items
  - Elections – B. Post has presented his proposal of the election procedure based on an electronic on-line approach. The Society needs to elect a new vice president, treasurer and secretary in 2011. We should start the election procedure just after the Samsun Board Meeting, latest on April 11<sup>th</sup>. The deadline for candidate availability check (prenomination) is May 9<sup>th</sup>, 2011. The call will be sent only to European residents, who are eligible according to the EWRS Constitution. Afterwards the nomination list will be prepared and sent out to all EWRS members by 10<sup>th</sup> May the latest. Nomination deadline should be closed at 30<sup>th</sup> June. ExCom members will be informed about the outcome of the nomination to continue the election procedure. Consequently the top 4 ranked nominees, who agree to be nominated, will be put on the list on-line for final election procedure and sent out for voting latest by 18<sup>th</sup> July. The total list of nominees will be published. The deadline for voting is 8<sup>th</sup> August. The newly elected candidates will be invited by the Board for an introductory meeting by the end of the year. The elected candidates will be published in the Newsletter by the end of the year.
- P. Barberi proposed to inform EWRS members about the elections by e-mail in advance to ensure a timely voting procedure.

### **GA-37.3 Report of the Scientific Committee (SciCom)** (J. SOUKUP)

- J. Soukup presented information about the 15th EWRS Meeting in Kaposvar and future events planned for 2011 and 2012, as well as Working Group activities.
- WG coordinators gave reports on the past and ongoing activities in 2011. Seven workshops have been organised in 2011, two of them as a joint actions of two WGs. In 2012, four workshops have been planned and additional budget requested by coordinators for WGs Education and Training (3000 €), Germination and Early Growth (2500 €), Site Specific Weed Management (3000 €), and Weed Mapping (2500 €).
- General basic requirements for the on-line workshop registration procedure through the EWRS website were formulated by the Vice-President: i) an effective system for registration, confirmation of the registration and payment, and tracking of membership, ii) easy and efficient abstract upload and revision, keeping a high quality of abstracts, iii) ensuring ISBN for book of abstracts and indexing in CABI, Scopus and ISI Thomson databases.
- Daniel Cloutier presented to SciCom statistics demonstrating how often the EWRS website has been visited and how the functionality and visibility of the EWRS could be improved on the internet. Especially links with other institutions, Power Point slides, and proceedings for download appear to increase the number of hits.

- Husrev Mennan gave a report on how the venue for the 16<sup>th</sup> EWRS Symposium (Samsun, June 2013) is being prepared. Facilities for the scientific part of the conference (lecture halls and space for poster presentations), as well as the number of beds in hotels (at various price level) and dormitories (for students) are very good and abundant. Transportation and logistics will be ensured by the organisers. A special conference service will be used for registration, upload of abstracts and their redistribution to session organisers. Printing of the proceedings will be done by a private printing company. A preliminary schedule of further steps in organising the conference was proposed by the Vice-President.
- The establishment of a new WG (Herbicide Tolerant Crops) was proposed by Ivo Brants. The WG focus should cover wider aspects of growing HT crops, e.g. risk assessment and environmental monitoring. An independent WG coordinator would be preferred instead of a company employee.
- Baruch Rubin and Per Kudsk informed the SciCom about the current status and preparations of the coming IWSS Congress (Huangzhou, China, June 2012). Josef Soukup presented the Czech bid for the organisation of the 2016 IWSS congress in Prague. The EWRS is ready to support this European bid scientifically should it be approved.

#### **GA-37.4 Report of the Treasurer (B. POST)**

- The EWRS Financial is present at pages 6-9 of this Newsletter.

#### **GA-37.5 Report of the Membership Office (B. POST)**

- Ben Post reported that at present we have 580 ordinary members in 63 different countries (in 37 European countries out of 47 possible), 91 student members, 5 honorary members (Ebner, Eggers, Fryer, Hance and Hurlle), 1 sustaining member and 41 affiliated member organisations. Many members have not paid the membership fee for 2 to 4 years and have been removed from the EWRS membership list.
- Ben Post proposed to keep the membership fee at the same level as in 2011. The Board agreed. There will be the last call sent out to a number of colleagues to pay their fees, otherwise their membership will also be cancelled.
- There will be a reduction of the full fee for senior (retired) members from 60 EUR to 30 EUR, but without subscription to Weed Research.
- Action: Ben Post should adapt his membership website accordingly.

#### **GA-37.6 Report of the Editor of Weed Research (written report sent by J. MARSHALL)**

- H. Krähler reported about J. Marshall's written report on Weed Research for 2010 and in part for 2011. Weed Research is financially stable, with good renewals of subscriptions. Academically, the journal is thriving, with increasing submissions and papers published and an impact factor in 2010 of 2.033, the highest ever.

#### **GA-37.7 Other items (H. KRÄHMER)**

- H. Krähler reported about his visit to Poznan University in 2011 where he has given an invited lecture on future weed science aspects (Perspectives for weed science in the 21<sup>st</sup> century).
- Invasive species meetings linked to the EU strategy on invasive alien species have been organised by EU Commission in Brussels and Hansjörg has attended them several times.

#### **GA-37.8 Coming meetings and General Assembly (H. KRÄHMER)**

The following meetings will take place in Ljubljana, Slovenia from 23 to 25 March 2012:

- The Foundation Board Meeting will take place on Friday, 23<sup>rd</sup> March, 2012.
- The 53<sup>rd</sup> SciCom Meeting will take place on Saturday, 24<sup>th</sup> March, 2012.
- The 53<sup>rd</sup> Board Meeting will take place on Sunday, 25<sup>th</sup> March, 2012.
- The 38<sup>th</sup> General Assembly will take place on Sunday, 25<sup>th</sup> March 2012.

Minutes taken and compiled by  
Approved by

Andrej SIMONČIČ, Secretary  
Hansjörg KRÄHMER, President & Chairman

[Back to Content](#)

## **EWRS FINANCIAL REPORT 2010**

Treasurer, Drs. Ben J. Post; [ewrs@bureaupost.nl](mailto:ewrs@bureaupost.nl)

28 June 2011

The auditors Mrs. Riemens and Mr. E.S.N. Mol conducted the audit of the financial administration of the EWRS on 28 June 2011.

The balance and financial report were proved to be correct.  
The Annex 1 is correct and to be published in the next EWRS Newsletter.

Ad Annex 1. Income, Expenditure, Balance 2010

\* Capital of the Society on 31 December 2009 was € 12,546 (Annex 1).

Capital of the Society on 31 December 2010 was € 1,994 (Annex 1).

\* The Executive Committee of the Society transferred an amount of € 39,400 EURO to the Foundation (Annex 1).

\* The final result, including the transfer of money to the Foundation, is an apparent decrease in the Society balance of € 10,552.

\* Income to the Society was € 106,102.

Expenditure of the Society, due to scientific and executive activities, was € 76,895.

The Society's result is an excess income of € 29,207.

\* Balance between bank costs and interest income due to financial activities of the Society was € -359.

Ad Annex 2.

\* The budget for the Year 2012 (Annex 2) for the Working Groups and for other activities has been established according to the proposals by SciCom and Board on 27 March 2011, in Samsun, Turkey. On 27 March 2011 the General Assembly in Samsun, Turkey has approved the budgets for the year 2012.

The Foundation financial administration and balance of the year 2010 has been audited by Mr. H. Wonnink (A.A.) (KAN Accountants, Doorwerth, The Netherlands).

The Board of the "Foundation for the financial interests of the EWRS" has accepted the financial report of the Foundation.

The Foundation capital on 31 December 2009 was € 533,254.

The capital of the Foundation in 2010 increased with € 45,994.

This amount includes the transfer of € 39.400 from the Society.

The Foundation capital on 31 December 2010 was € 579,248.

[Back to Content](#)

## Annex 1. Income, Expenditure and Balance 2010

<b>Society activities</b>	<b>Income</b>	<b>Expenditure</b>	<b>Balance</b>
<b>Income</b>			
Membership Fees	36,103		
Journal Weed Research	68,105		
Symposia	1,866		
IWSS Fees	0		
IWSS Fees returned to IWSS	0		
Publications./Proceedings	0		
Interest	0		
Other items: error booking 2009 > returned in 2010	28		
<i>sub-total Society</i>	<b>106,102</b>		
<b>Expenditure</b>			
Scientific Committee / Meetings		5,692	
Working Groups		8,601	
EWRS Symposia		0	
Other Symposia		0	
EWRS Subsidy Junior Scientists		13,127	
Board / Meetings		10,522	
Treasury / Membership Office		16,541	
Newsletter (incl. postage)		2,000	
Website EWRS.ORG		4,531	
Website EWRS.Membership Office		12,253	
Taxes / Postage		1,907	
Other items: Meetings		0	
ASK archive destruction		37	
printing matters Digidruk online info, mailings debtors		1,635	
error booking 2010 (> to be returned in 2011)		49	
<i>sub-total Society</i>	<b>106,102</b>	<b>76,895</b>	<b>29,207</b>
<b>Financial Activities</b>			
<i>sub-total Financial Activities Society</i>		359	-359
<b>total All Activities Society</b>			<b>28,848</b>
Transferred to the Foundation	-39,400		-39,400
<b>Result Society 2010</b>			<b>-10,552</b>
<b>Balance 31 December 2009</b>			<b>12,546</b>
<b>Balance 31 December 2010</b>			<b>1,994</b>

## Annex 2. Budget 2010-2012

Society	Budget 2010	Expenses 2010	Budget 2011	Budget 2012
<b>All SciCom items summarised:</b>	<b>56,000</b>	<b>27,420</b>	<b>76,000</b>	<b>71,500</b>
<i>Scientific Committee (SciCom):</i>	<i>3,000</i>	<i>0</i>	<i>3,000</i>	<i>3,000</i>
Chairman	1,500		1,500	1,500
SciCom Contingency Chairman				
Secretary	1,500	0	1,500	1,500
<i>SciCom Meetings:</i>	<i>4,000</i>	<i>5,692</i>	<i>5,000</i>	<i>10,000</i>
SciCom Cont. Kaposvar 2010	4,000	5,692		
SciCom Cont. Samsun 2011			5,000	
SciCom Cont. Ljublijana 2012				5,000
SciCom Cont. 54 <sup>th</sup> meeting 2012				5,000
<i>Working Groups</i>	<i>35,500</i>	<i>8,601</i>	<i>60,500</i>	<i>46,000</i>
Biological Control	2,500		5,000	2,500
Crop-Weed Interactions	2,500	715	5,000	2,500
Education & Training	3,500	1,819	7,500	5,500
Germination & Early Growth	2,500	1,275	2,500	5,000
Herbicide Resistance	2,500		2,500	2,500
Invasive Plants	5,500	2,680	5,000	2,500
Optimisation of Herbicide Dose	2,500		2,500	2,500
Parasitic Weeds	2,500		5,000	2,500
Physical and Cultural Weed Control	2,500	749	7,500	2,500
Site-Specific Weed Management	2,500		2,500	5,500
Weed Mapping	2,500	955	7,500	5,000
Weeds and Biodiversity	2,500	408	5,500	2,500
WM Arid & Semi-Arid Climate	2,500		5,000	2,500
WM Systems in Vegetables	2,500		5,000	2,500
<i>EWRS Symposia:</i>	<i>0</i>	<i>0</i>	<i>0</i>	<i>2,500</i>
15 <sup>th</sup> EWRS Symp., Kaposvar 2010	0	0		
16 <sup>th</sup> EWRS Symp., Samsun 2013			0	2,500
<i>Junior Scientists</i>	<i>10,000</i>	<i>13,127</i>	<i>0</i>	<i>10,000</i>
Junior Scientists Kaposvar 2010	10,000	13,127		
Junior Scientists IWSS/IWCC China			0	10,000
<b>All Board items summarised:</b>	<b>33,995</b>	<b>27,063</b>	<b>34,988</b>	<b>44,700</b>
<i>Executive Committee (ExCom):</i>	<i>5,300</i>	<i>7,289</i>	<i>5,650</i>	<i>8,750</i>
President	0		0	1,500
ExCom Contingency President			0	0
Past Pres. - External Relations	1,500		1,500	1,500
Secretary	1,500		1,500	1,500
Office Consumables Bureaupost	750	4,557	1,000	2,000
Accountant Foundation audit	900	893	1,000	1,000
Financial Committee			0	0
Constitution Committee			0	0
Archive Committee	650	1,628	650	1,000
Archive Room Rent		212		250



<b>Society</b>	<b>Budget 2010</b>	<b>Expenses 2010</b>	<b>Budget 2011</b>	<b>Budget 2012</b>
<i>Board Meetings:</i>	<i>5,000</i>	<i>3,233</i>	<i>5,000</i>	<i>5,000</i>
Board Cont. 2010 Kaposvar	5,000	3,233		
Board Cont. Samsun 2011			5,000	
Board Cont. Ljubljana 2012				5,000
<i>Treasurers / Membership Office:</i>	<i>16,300</i>	<i>16,541</i>	<i>16,738</i>	<i>16,900</i>
Treasury / Membership Office	16,300	16,541	16,738	16,900
<i>Newsletter:</i>	<i>2,000</i>	<i>2,000</i>	<i>2,000</i>	<i>2,200</i>
Editor	2,000	2,000	2,000	2,200
<i>Website</i>	<i>2,000</i>	<i>16,783</i>	<i>3,000</i>	<i>10,500</i>
Website EWRS.org	2,000	4,531	3,000	7,000
Website MO		12,253	3,000	3,500
<i>Taxes &amp; Postage</i>	<i>1,100</i>	<i>1,907</i>	<i>1,100</i>	<i>850</i>
Taxes	100	52	100	100
Postage	1,000	1,855	1,000	750
<i>Others:</i>	<i>1,795</i>	<i>1,722</i>	<i>1,500</i>	<i>500</i>
ASK archive destruction	795			
printing matters Digidruk online info, mailings debtors	1,000			
<b>Expenditure</b>	<b>89,995</b>	<b>76,895</b>	<b>110,988</b>	<b>116,200</b>

## Annex 3. EWRS Financial Affairs Foundation

<b>Foundation</b>	<b>Income</b>	<b>Expenditure</b>	<b>Sub-totals</b>
Interest Foundation	10,841		
Bank Costs Foundation		538	
<b>Financial Activities Foundation</b>	<b>10,841</b>	<b>538</b>	<b>10,303</b>
Value Increase Stocks Foundation			-3,709
Foundation receipt from Society			39,400
Result Foundation 2010			45,994
<b>Balance 31 December 2009</b>			<b>533,254</b>
<b>Balance 31 December 2010</b>			<b>579,248</b>

[Back to Content](#)

## SCIENTIFIC COMMITTEE AND WORKING GROUPS

### REPORT ON THE 2<sup>ND</sup> EWRS WORKSHOP EU – WEED MAPPING

Jokioinen, Finland  
September 21<sup>st</sup> to 23<sup>rd</sup>



The second official workshop of the EWRS Weed Mapping Working Group took place in Jokioinen, Finland, from September 21<sup>st</sup> to 23<sup>rd</sup>. Thirty participants from 15 countries enjoyed excellent presentations and posters on running national and regional weed surveys in different European countries, on methods and software for assessing, documenting and evaluating data, on the mapping of resistant weeds and the involvement of citizens for the mapping of invasive weeds.

Three sessions of oral presentations were incorporated into the Programme:

- National and regional weed surveys
- Spatial weed distribution and methodology
- Weed resistance mapping

Three hours of the workshop were devoted to a “World Café” exercise in which two questions had to be answered:

- “Why do we map weeds and what do we want to achieve with the results?”
- “What are the databases for our maps, how do we validate and document our data and how do we finally map weeds independent of national borders?”

An abstract booklet was prepared by the MTT colleagues in Jokioinen. This booklet, the results of the World Café and single presentations will be posted on the working group website.

Most regional coordinators were confirmed. Ona Auskalniene will take over tasks of her husband. Kristin Hanzlik will be able to continue with her coordinator function in her new assignment. Maja Meseldzija will actively contribute to the working group again after her return from the present maternity leave. Juan Pedro Ruiz-Santaella has agreed to coordinate weed mapping activities in Spain, Portugal, France and Italy.

Five students received grants for their participation: Gionata Bocci, Ingo Meiners, Stefan Meyer, Silvia Panozzo, and Christos Vlachos (see picture below).



The local organizers did their best for the success of the aim of the workshop: to learn about the latest weed mapping activities in Europe and the way to a common action for a European overview of weed distribution. The leadership of the working group was finally handed over to Garifalia Economou who plans to organize the next workshop in Greece in September 2012.

Hansjörg Krähmer

### **JOINT EWRS WORKING GROUP WORKSHOP**

4-8 September 2011  
Huesca, Spain

For the first time, the two working groups of the EWRS – ‘Weed Management in Arid and Semi-Arid Climate’ and ‘Weed Management Systems in Vegetables’ were met in a joint workshop in the Polytechnic School of Huesca (University of Zaragoza) from 4 to 8th September 2011. The workshop aimed to share the experiences of researchers in weed biology and weed management in various crops especially in the Mediterranean climate areas. It was one of the most important international meetings in our technical and scientific field, which emphasized the exchange of ideas, results and discussions on current issues related to research on weeds and promoting the establishment of collaboration on new projects and networks.

The meeting was organized by the two EWRS Working groups coordinators: Prof. Baruch Rubin from the Hebrew University of Jerusalem, Israel and Dr. Euro Pannacci from the University of Perugia, Italy and by the local organizers: Dr. Joaquin Aibar from the Polytechnic School of Huesca, University of Zaragoza; the CITA of Aragon with researchers Dr. Carlos Zaragoza, Dr. Alicia Cirujeda and Mrs. Maria Leon, and Mrs. Sonsoles Fernández-Cavada from the Department of Agriculture and Environment of the



Government of Aragón. In this occasion 40 weed scientists and students from Algeria, Denmark, Greece, Hungary, Iran, Israel, Italy, Serbia, South Korea, Spain, Sweden, Turkey, UK., and USA presented 54 papers, demonstrating the wide interest of the professionals in this meeting.



Four sessions were dedicated to: "weed biology, ecology and modelling", "herbicide resistance and integrated management in dry-land and irrigated crops", "weed management in vegetables and minor crops", and "invasive and parasitic weeds". The workshop provided excellent opportunities for exchanging professional and individual information with colleagues from all parts of the world.

Vassilis Kotoulas from Laboratory of Agronomy, Agricultural University of Athens, Greece, Mrs. Dragana Bozic from Faculty of Agriculture, University of Belgrade, Belgrade, Serbia, Mr. Maor Matzrafi from the Institute of Plant Sciences and Genetics in Agriculture, The Hebrew University of Jerusalem, Israel.

EWRS subsidized 5 young scientists: Ms Yamina Bouchikh from the Department of Biology, Faculty of Science, University of Moulay Taher, Saida, Algeria; Ms Gal Dvorkin from the the Institute of Plant Sciences and Genetics in Agriculture, The Hebrew University of Jerusalem, Israel; Mr.

In the field excursion, we visited an organic vegetable farm and a trial of herbicides in rice. A medieval castle of Sádaba was also visited in the rural area of Cinco Villas (North of Zaragoza province).



The following are the conclusions that were compiled by the participants:

1. Nowadays the agriculture of arid and semi-arid climate regions and especially minor crops needs more than ever basic and applied knowledge in weed science, due to weed competitiveness and its difficulty of management.
2. As well as the other regions, hand labour for weeding is extremely expensive and a painful task for workers and very often nonexistent, especially on vegetable crops. For these reasons other weed removal systems are necessary; as chemical, mechanical or physical weed control and preventive or cultural techniques. These alternative methods require governmental / administrative support to make them affordable for farmers.
3. The problem of the present pesticide elimination and use restrictions in the EU and particularly of herbicides, for environmental and food safety reasons, is pressing the agriculture of these areas and especially vegetable crops. The authorities must be aware of it and defend the farmers need.

4. Furthermore, we have to consider these herbicide restrictions in the EU and the appearance of herbicide resistance as an opportunity to research more and develop better integrated control systems.
5. Since weed management cannot be based exclusively on herbicide use, integrated solutions are needed and for that a deep knowledge of all agro-ecological process related to weeds and their management is necessary. We must make an effort to take advantage of all opportunities offered by the new legislation, recently approved, to use the Mutual Recognition and the Extension of Use for minor crops of active substances already approved in the EU.
6. The integrated weed management must be based on a global vision that must consider the different feasible methods: preventive, cultural, physical, biological and chemical, in combination with characteristic crop husbandry systems of these areas (e.g.: sprinkler and drip irrigation or deficit irrigation,...). In this Workshop a number of practical examples have been presented.
7. The application of pre-emergence herbicides through the irrigation systems is possible and can be very useful in vegetable crops but it requires more research and development.
8. The parasitic weed species (such as *Orobanche* spp., *Phelipanche* spp., *Cuscuta* spp. ...) are very important in the warm areas. The integration of different methods and technologies is necessary for their efficient management.
9. Weed science and weed management are highly valued among farmers and the society is more and more aware of the inconvenience of weed presence (toxic, invaders, allergenic plants,...) but we as weed scientists must make an effort to develop and apply the new technologies.
10. That is why it is necessary to incorporate young scientists and modern technologists to the research, development and educational staffs since a scarce generational replacement is detected.
11. The Joint Workshop experience of two Working Groups meeting has been satisfactory. Both groups have interacted well and the knowledge transmitted has been very useful to the participants. It has been much more economical than having two separate meetings as well, which is very important nowadays.
12. While a good participation has been obtained (40 participants from 14 countries) it is necessary to make an effort to integrate more weed scientists of Mediterranean countries (as France, Portugal,...) because their experience (in herbicide resistance, invasive weeds, irrigation,...) can be very useful for everyone.
13. The establishment of regional networks for monitoring and alert of the newly introduced noxious or invasive alien weeds can also be of a great interest for all.
14. Global change high amount of movement of goods and human, and climate change brings new challenges in our region and crops we produced. Research, policy and awareness activities require more attention than it was before.





The organizers would like to express their appreciation for the assistance provided by the EWRS, the Spanish Weed Science Society (SEMh), the Ministry of Science and Innovation (Government of Spain), University of Zaragoza, Center for Research and Technology in Agro-Food (CITA), Department of Innovation and New Technology, and the Department of Agriculture and Environment of the Government of Aragon. Thanks are due also to the Huesca Town Hall, and the companies Bayer and Cheminova for their kind support.

Carlos Zaragoza, Euro Pannacci, Baruch Rubin

[Back to Content](#)

## MEMBER CONTRIBUTIONS

### SOME REMARKS ON THE EWRS LOGO HISTORY

Thomas EGGERS, Braunschweig, Germany; [uth.eggers@googlemail.com](mailto:uth.eggers@googlemail.com)

In the European Weed Research Society – *Newsletter No. 5, July 1976*, “the Executive Committee [invited] members to contribute designs for a distinctive EWRS logo or printed device to be used on the Society’s stationary and on the covers of its publications in future. The designer of the winning logo [...] receive three years free membership of EWRS commencing on 1.1.77. [...] Designs must reach the Editor, EWRS Newsletter, [...] not later than 1.11.76.”

After having got the idea to participate in this competition, I took the logo of my institute, the Federal Biological Research Centre for Agriculture and Forestry (BBA; Fig. 1), as a starting point, and selecting *Convolvulus arvensis* as a suitable weed species to replace the snake in that logo, I drafted the EWRS logo (Fig. 2, left) during the 1976 Colloque International sur la Biologie, l’Écologie et la Systématique des Mauvaises Herbes at Dijon. And I submitted my proposal (Fig. 2, middle) at the end of October 1976. Fig. 2 shows the different steps of creating the logo.



During the 2<sup>nd</sup> General Assembly of the European Weed Research Society held on 15 November 1976 at Brighton, UK, this *Document EWRS-AS-76-8* was distributed: "GENERAL ASSEMBLY AGENDA ITEM 2.7

Designs submitted for an EWRS Logo

Five members have submitted designs for an EWRS logo:

1. Miss J Thurston, Rothamsted Experimental Station, UK
2. J L V Moradello, Estacion Experimental Aula Dei, Saragossa. Spain
3. N Le Brun Keris, Société des produits chimiques Sovilo, Reims, France
4. Dr T Eggers, Inst. f. Unkrautforschung, Biol. Bundesanstalt, Braunschweig, Fed. Rep. of Germany
5. R J Chancellor, Weed Research Organization, Oxford

The designs are reproduced on the following pages, distinguished by letters. Members are asked to indicate one design they prefer [...] and hand it to the Secretary of EWRS at the end of the meeting."

Report of the 2<sup>nd</sup> EWRS General Assembly, by J E Y Hardcastle, *EWRS Newsletter No. 7, January 1977*: "During the 2<sup>nd</sup> General Assembly of the European Weed Research Society held on 15 November 1976 at Brighton, UK, the Secretary announced that the competition for a new logo or device of the Society had produced 14 designs to choose from and he called upon the Members present to indicate their preference upon the form provided. The winner of the competition was Dr T Eggers." – [During the 27<sup>th</sup> EWRS General Assembly held in Papendal/Arnhem, The Netherlands, on 26 June 2002 I had the first opportunity to show the members how I developed my proposal for the current EWRS logo (see Fig. 2).] The EWRS Logo was then used on the EWRS Newsletters and EWRS letter heads. The organizers of the EWRS Symposium 1977 at Uppsala, Sweden, managed to have a postmark with the EWRS Logo (Fig. 3).

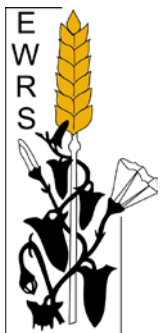


Fig. 3:  
The EWRS Logo postmarked during the EWRS Symposium at Uppsala, Sweden



Fig. 4:  
*Convolvulus* cf. *sepium* twining himself around a cereal ear

Since it appeared that the logo version with the letters EWRS at the bottom (Fig. 2) was often used for publication without the characters EWRS these were made a part of the logo that will not invite to be discarded easily. The Executive Committee decided in 2004 to use only this version of the Logo by the Society, e.g. on the top of each Newsletter. It is also printed (in white) on the green front page of the Society's journal WEED RESEARCH.

Layouts similar to my design of *Convolvulus arvensis* twining himself around wheat can be found:

- In the 1980s a *Convolvulus* T-shirt could be bought at the Weed Research Organization (WRO), Oxford (Fig. 4).
- The Turkish Weed Science Society had a logo similar to the EWRS Logo showing clearly *Convolvulus arvensis*, used for the 1<sup>st</sup> Herboloji Kongresi in 1993, and 2 years later a logo of the Society itself with a more abstract design of a maybe Mediterranean *Convolvulus* species with red flowers (Fig. 5).
- Sometime after 1980 I found purely by chance a similar artwork at a house in southern Germany (Fig. 6).





Fig. 5:  
Logos of the Turkish Weed Science Society:  
*Convolvulus arvensis* and *Convolvulus* spec.  
twining around a cereal ear



Fig. 6:  
*Convolvulus* cf. *sepium* twining himself  
around cereal plants, artwork at a house  
wall

[Back to Content](#)

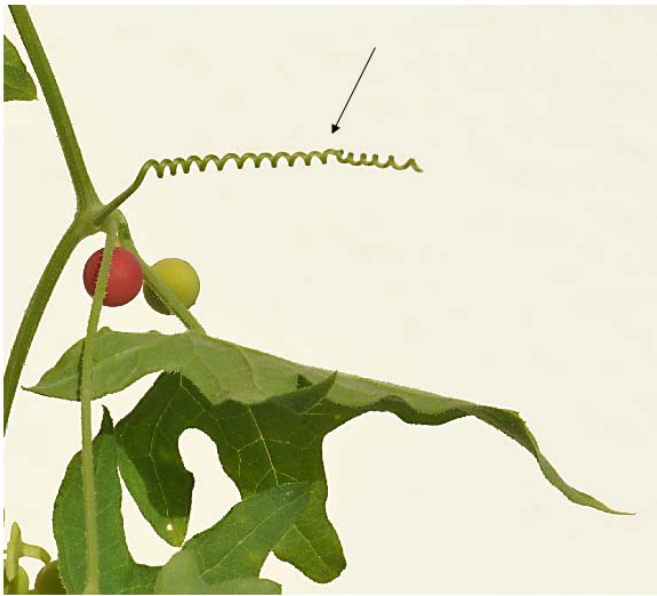
### HISTOLOGY OF *BRYONIA DIOICA*

Dear Colleagues,

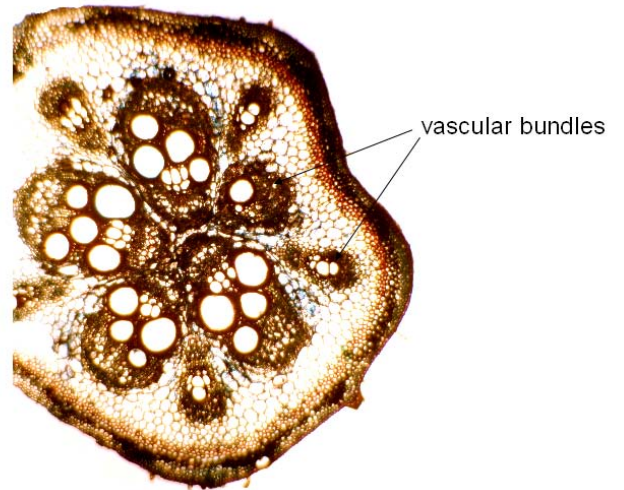
In this Newsletter issue, I will show a few pictures of a species that is not a weed in arable crops. It is a perennial winding and climbing weed which can grow several meters high on fences, bushes or trees: *Bryonia dioica* Jacqu. (Bayer code: BYODI) or bryony. It belongs to the Cucurbitaceae family. The Latin name tells us that this plant is dioecious, i.e. male and female flowers grow on different plants. The red berries of bryony are extremely poisonous. Carl Correns, one of the first scientists to recognize Gregor Mendel's achievements, used to cross *Bryonia* species. A transverse section through the stem of *Bryonia* shows its bicollateral vascular bundles. The bundles are protected by fibers forming a peripheral cylinder. The root is a tuber-like storage organ.



*B. dioica* growing on a fence near Frankfurt,  
Germany



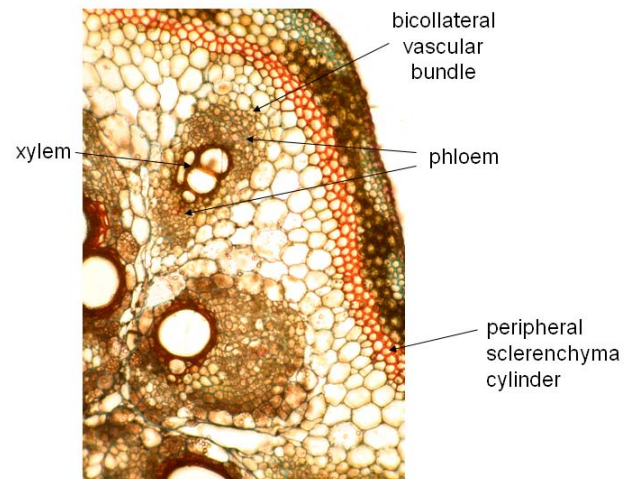
Tendrills (arrow) allow *Bryonia* to climb.



Transverse section through shoot with typical arrangement of vascular bundles (Etzold blue, 40x)



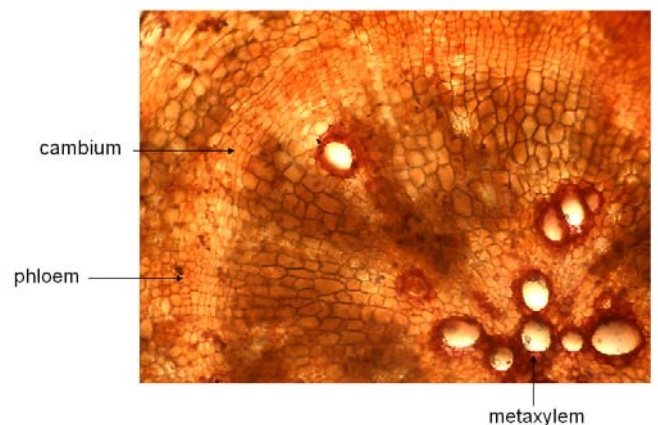
Female flower with an inferior ovary leading to an epigynous berry.



Enlarged view showing bicollateral vascular bundles and peripheral sclerenchyma cylinder (100x).



Male flower with anthers but no stigmas



Transverse section through root (astrablue/safranin, 100x).

My next contribution will deal with *Cardaria draba* (L.) Desv.

Hansjörg Krämer

[Back to Content](#)



## **CALL FOR CONFERENCES**

---

### **6<sup>TH</sup> WORLD CONGRESS ON ALLELOPATHY**

15-19 December 2011

Guangzhou, China

The 6<sup>th</sup> World Congress on Allelopathy will be held in Guangzhou, China from 15-19 December 2011. The World Congress of Allelopathy (WCA) is a formal academic conference organized by the International Allelopathy Society every three years. Recent trends in sustainable development and advances in research methodology have helped to make allelopathy a rapidly growing research field throughout the world. The 6<sup>th</sup> WCA will provide an excellent opportunity for exchanges between those who are interested in allelopathy.

The city of Guangzhou is the southern gate of China with a subtropical climate. Because beautiful flowers can be grown year round in Guangzhou, it is called the "Flower City". You are warmly welcomed by your hosts in Guangzhou!

For more information go to:

<http://www.international-allelopathy-society.org/main/WCA/index.html>

The first circular is at:

<http://www.international-allelopathy-society.org/main/WCA/WCA.pdf>

### **25<sup>TH</sup> GERMAN CONFERENCE ON WEED BIOLOGY AND WEED CONTROL**

13 – 15 March 2012

Braunschweig, Germany

Julius Kühn-Institute (JKI), the Institute for Geoecology of the TU Braunschweig and the Weed Science Working Group of the German Phytomedical Society (DPG) would like to invite you to attend the 25<sup>th</sup> German Conference on Weed Biology and Weed Control.

The aim of the conference is to provide a platform for an exchange and discussion of new research results and innovative methods in the area of weed science. The program will consist of oral presentations and posters. Scientific contributions will be presented both in German and English.

Topics will include but are not limited to the following:

- Weed biology & weed ecology
- Weed population dynamics
- Modeling in weed science
- Alien/Invasive/Rare weed species
- Biodiversity/Ecological functions of weeds
- Weed monitoring
- Allelopathy
- Intra- and interspecific competition
- Weed management in field crops, organic farming, grassland, non-crop land, ...
- Preventive and cultural weed control (e.g. crop rotation, tillage, ...)
- Biological/physical/chemical weed control measures
- New herbicides, MoAs & formulations
- Strategies for a sustainable use of herbicides
- Herbicide resistance in crops/weeds
- Molecular methods in weed science
- Precision farming
- Application techniques
- Environmental behaviour of herbicides



- Environmental and aquatic impact of herbicide application
- Weed management in extension services
- Legal aspects in weed control

Registration details and further information can be found at the official website of the conference at: [www.unkrauttagung.de](http://www.unkrauttagung.de)

The regular registration fee is € 210,00 whereas the reduced fee for Students and Pensioners is € 105,00. The registration includes proceedings, welcome reception and coffee breaks. The Conference dinner on 14 March will cost an extra € 12,00 and this includes a buffet and drinks. Accommodation can be arranged at: [www.braunschweig.de/english](http://www.braunschweig.de/english) → Tourist Service → Hotels.

Further information can be obtained from the local organizers Dr. Henning Nordmeyer and Dr. Lena Ulber, Julius Kühn-Institut (JKI), Braunschweig, Germany; e-mail: [unkrauttagung@jki.bund.de](mailto:unkrauttagung@jki.bund.de)

### **INTERDISCIPLINARY WORKSHOP OF THE EWRS WORKING GROUP SITE SPECIFIC WEED MANAGEMENT (SSWM)**

University of Copenhagen, Denmark  
28-31 May 2012

- Expected participants: Weed scientists, engineers, PhD or master students, and crop protection companies.
- Preregistration: Send an email to the chairman of the SSWM Working Group, prof. Svend Christensen [svc@life.ku.dk](mailto:svc@life.ku.dk) a.s.a.p. but not later than 1 November 2011. Please attach a short abstract (max.one page) of your interest or activity in SSWM.
- Workshop Fee: None
- Final program and possible accommodations: Will be announced on 1 December 2011

Within the past 5 years, technical development of camera and imaging systems have created new opportunities to automatically detect and map weed occurrence and weed density in fields. Several studies have also shown that significant savings of herbicides can be achieved by site-specific weed management.

In the EWRS Working Group Site Specific Weed Management (SSWM), we have decided to invite weed scientists, engineers, master and PhD students and crop protection companies from all over the world. The workshop is interdisciplinary with a theoretical part and an experimental part aiming at measuring varying vegetation density with weed sensing platforms. The objectives of the workshop are partly a scientific introduction and discussion of different weed sensor platforms, and partly a joint experiment with proof-of-concepts from participating research groups. A field split-plot experiment with varying vegetation density will be established at the research farm of University of Copenhagen. The main idea is to apply several sensor platforms on the same experiment using the same measurement protocol.

In addition to varying vegetation density, the experiment includes a series of different herbicides and doses. The idea of this part of the experiment is to describe the performance of the sensor platforms with the relationship between dose and vegetation responses. Another goal of the workshop is to write one or two joint peer review articles for Weed Research Precision Agriculture or Computers and Electronics in Agriculture. The workshop also includes a theoretical introduction and discussion of decision algorithms and spatial variable spraying systems for SSWM.

Currently, groups from Hohenheim University, University of Copenhagen, University of Southern Denmark and Bioforsk in Norway participate with their sensor systems. Other groups are warmly welcome to attend with their sensor systems.

The workshop is held 28-31 May 2012 at Copenhagen University. The experimental cost and meals during the workshop is covered partly by EWRS and partly by Department of Agriculture and Ecology, University of Copenhagen. There is no workshop fee but you have to cover your travel cost and accommodation. EWRS has granted the working group a small amount of money. We have decided to allocate the money to cover travel cost and accommodation for some PhD students or young engineers working on SSWM. If you are in this category, please apply for a travel and accommodation grant by sending me 1-2 page description of your SSWM activity.

On behalf of the organising committee

Roland Gerhards, Hohenheim University.

Therese With Berge, Norwegian Institute for Agricultural and Environmental Research (Bioforsk).

Jens Streibig, University of Copenhagen.

Svend Christensen, University of Copenhagen.

### **INTERNATIONAL CONFERENCE GLOBAL HERBICIDE RESISTANCE CHALLENGE 2013**

18-22 February 2013

Perth, Australia

Global food production is one of the greatest challenges of the 21<sup>st</sup> Century. Sustaining world food production requires reliable control of yield reducing crop weeds. Herbicides are the principal tool for crop weed control yet their sustainability is threatened by the evolution of herbicide resistant weed populations in many parts of the world. The latest chapter in resistance evolution is the widespread appearance of glyphosate resistant weeds threatening the success of glyphosate resistant crops. Crops with new herbicide resistance gene traits, new herbicides and non-chemical methods to manage weeds are being introduced to counter the weed/resistance threats.

The Global Resistance Challenge 2013 conference offers a multidisciplinary forum focused on all aspects of herbicide resistance in crops and weeds and their impact on global food production. Scientific sessions will range from the molecular basis of herbicide resistance evolution through agro-ecology and agronomy to on-farm resistance management.

The Global Resistance Challenge 2013 conference will provide a stage for young and established private and public sector researchers, crop consultants and others to present their work in front of a welcoming international audience in the beautiful portside city of Fremantle, Perth, Western Australia. We welcome everyone who wishes to discover the latest advances in herbicide resistance to Perth in February 2013, to experience a magnificent Western Australian late summer.

For more information: <http://www.herbicideresistanceconference.com.au/>

### **ASSOCIATION OF APPLIED BIOLOGISTS CONFERENCES**

The following list of conferences is among the ones proposed by the Association of Applied Biologists:

#### **29 November 2011**

Biopesticides conference at: Olde Barn Hotel, Marston, Lincs, UK

#### **30 November 2011**

Advances in Biological Control at: Olde Barn Hotel, Marston, Lincs, UK

More information can be found on the following website:

[www.aab.org.uk/contentok.php?id=184&basket=wwshowconflist](http://www.aab.org.uk/contentok.php?id=184&basket=wwshowconflist)

[Back to Content](#)

## **UPCOMING CONFERENCES AND WORKSHOPS**

---

### **INTERNATIONAL CONFERENCE: GOOD PRACTICES FOR SUSTAINABLE AGRICULTURAL PRODUCTION**

18 – 19 November 2011

Sofia, Bulgaria

[http://oldweb.ltu.bg/conferences/agroconf/2009/index\\_en.html](http://oldweb.ltu.bg/conferences/agroconf/2009/index_en.html) / [agroconf.ltu@gmail.com](mailto:agroconf.ltu@gmail.com)

---

### **BIOLIEF 2011 – 2<sup>ND</sup> WORLD CONFERENCE ON BIOLOGICAL INVASIONS AND ECOSYSTEM FUNCTIONING**

21-24 November 2011

Mar del Plata, Argentina

<http://www.grieta.org.ar/biolief>

---

### **XIII NATIONAL CONGRESS ON WEEDS, SOCIEDAD ESPAÑOLA DE MALHERBOLOGÍA**

22 – 24 November 2011

University of La Laguna (Tenerife island), Spain

<http://www.13congresonacionalmalherbologia.com/>

---

### **SYMPOSIUM ON DEVELOPMENT AND APPLICATIONS OF ADJUVANTS FOR AGROCHEMICALS**

25 November 2011

Okura hotel, Amsterdam, The Netherlands

[http://www.surfaplust.com/en/research\\_development/amsterdam\\_symposium\\_2011/index.htm](http://www.surfaplust.com/en/research_development/amsterdam_symposium_2011/index.htm)

---

### **ADVANCES IN BIOLOGICAL CONTROL**

29 November 2011

Olde Barn Hotel, Marston, Lincs, UK

[www.aab.org.uk/contentok.php?id=184&basket=wwwshowconflist](http://www.aab.org.uk/contentok.php?id=184&basket=wwwshowconflist)

---

### **BIOPESTICIDES CONFERENCE**

30 November 2011

Olde Barn Hotel, Marston, Lincs, UK

[www.aab.org.uk/contentok.php?id=184&basket=wwwshowconflist](http://www.aab.org.uk/contentok.php?id=184&basket=wwwshowconflist)

---

### **6<sup>TH</sup> INTERNATIONAL CONFERENCE ON BIOPESTICIDES**

11-16 December 2011

Chiang Mai, Thailand

[www.icob6.org](http://www.icob6.org)

---

### **6<sup>TH</sup> WORLD CONGRESS ON ALLELOPATHY**

15-19 December 2011

Guangzhou, China

<http://www.international-allelopathy-society.org/main/WCA/index.html>

---

### **CALIFORNIA WEED SCIENCE SOCIETY 2012 CONFERENCE**

Santa Barbara, CA, USA

23 - 25 January 2012

[www.cwss.org](http://www.cwss.org)

---

### **WEED SCIENCE SOCIETY OF AMERICA ANNUAL MEETING**

6– 9 February 2012

Big Island, Hawaii, USA

<http://www.wssa.net>

---

### **25<sup>TH</sup> GERMAN CONFERENCE ON WEED BIOLOGY AND WEED CONTROL**

13 – 15 March 2012

Braunschweig, Germany

[www.unkrauttagung.de](http://www.unkrauttagung.de)

---

---

---

**SHORT COURSE IN 'WEED MANAGEMENT IN MODERN AGRICULTURE'**

Zaragoza, Spain

16-21 April 2012

[Belkodja@iamz.chiheam.org](mailto:Belkodja@iamz.chiheam.org) / [www.iamz.chiheam.org](http://www.iamz.chiheam.org)

---

---

---

**INTERDISCIPLINARY WORKSHOP OF THE EWRS WORKING GROUP SITE SPECIFIC WEED MANAGEMENT (SSWM)**

University of Copenhagen, Denmark

28-31 May 2012

[svc@life.ku.dk](mailto:svc@life.ku.dk) (Prof. Svend Christensen)

---

---

---

**VI<sup>TH</sup> INTERNATIONAL WEED SCIENCE CONGRESS (IWSC): DYNAMIC WEEDS, DIVERSE SOLUTIONS**

17- 22 June 2012

New Century Grand Hotel, Hangzhou, China

<http://www.iwss.info>

---

---

---

**18<sup>TH</sup> AUSTRALASIAN WEEDS CONFERENCE**

8- 11 October 2012

Sebel and Citigate Albert Park, Melbourne, Australia

<http://www.18awc.com>

---

---

---

**INTERNATIONAL CONFERENCE GLOBAL HERBICIDE RESISTANCE CHALLENGE 2013**

18-22 February 2013

Perth, Australia

<http://www.herbicideresistanceconference.com.au/>

---

[Back to Content](#)

## EWRS ELECTIONS 2011

PLEASE REMEMBER TO VOTE FOR

- YOUR NEW VICE-PRESIDENT
  - SECRETARY
  - TREASURER

<http://ewrs.bureaupost.eu>

**DEADLINE 14 NOVEMBER 2011**

## EDITORIAL

### EWRS BOARD 2010–2011

President 2010-2011	Dr. Hansjörg <b>KRÄHMER</b> Kantstrasse 20 D-65719 Hofheim	<a href="mailto:Kraehmer-Hofheim@t-online.de">Kraehmer-Hofheim@t-online.de</a>
Vice President 2010-2011	Prof. Dr. Paolo <b>BÄRBERI</b> Land Lab/Agroecology; Institute of Life Sciences Scuola Superiore Sant' Anna Piazza Martiri della Libertà 33 I-56127 Pisa	T + 39 050 883 525 F + 39 050 883 526 <a href="mailto:barberi@sss.it">barberi@sss.it</a>
Past President 2010-2011	Hr. Per <b>KUDSK</b> Dept of Integrated Pest Management University of Aarhus Forsøgsvej 1 DK-4200 Slagelse	T + 45 8999 1900 <a href="mailto:per.kudsk@agrsci.dk">per.kudsk@agrsci.dk</a>
Secretary 2008-2011	Dr. Andrej <b>SIMONČIČ</b> Agricultural Institute of Slovenia Hacquetova 17 SI-1000 Ljubljana	T + 386 1 280 52 20 F + 386 1 280 52 22 <a href="mailto:andrej.simoncic@kis.si">andrej.simoncic@kis.si</a> <a href="http://www.kis.si">www.kis.si</a>
Treasurer 2008-2011	Drs. Ben <b>POST</b> EWRS Membership Office Postbus 28 NL-6865 ZG Doorwerth	F + 31 26 3706896 <a href="mailto:ewrs@bureaupost.nl">ewrs@bureaupost.nl</a>
Scientific Secretary 2010-2013	Prof. Josef <b>SOUKUP</b> Faculty of Agrobiolgy, Food and Natural Resources Czech University of Life Sciences Prague Kamycka 129 CZ-165 21 Prague 6 - Suchdol	T + 420 224 382780 F + 420 224 382780 M + 420 777 206 072 <a href="mailto:soukup@af.czu.cz">soukup@af.czu.cz</a>
Membership Officer	Drs. Ben <b>POST</b> EWRS Membership Office Postbus 28 NL-6865 ZG Doorwerth	F + 31 26 3706896 <a href="mailto:ewrs@bureaupost.nl">ewrs@bureaupost.nl</a>
Additional Members 2008-2011	Prof. Dr. Bärbel <b>GEROWITT</b> Institute for Land Use University of Rostock Satower Str. 48 D-18051 Rostock	T + 49 381 498 3160 F + 49 381 498 3162 <a href="mailto:baerbel.gerowitt@uni-rostock.de">baerbel.gerowitt@uni-rostock.de</a>
2008-2011	Dr. Gabriella <b>KAZINCZI</b> Dept. of Botany and Plant Production Kaposvár University Guba S. str. 40 H-7400 Kaposvar	T + 36 82 505 386 <a href="mailto:kazinczi.gabriella@ke.hu">kazinczi.gabriella@ke.hu</a>
2010-2013	Dr. Henri <b>DARMENCY</b> UMR Biologie et la Gestion des Adventices INRA 17, rue Sully, BP 86510 F-21065 Dijon-Cedex	T + 33 38069 3184 <a href="mailto:henri.darmency@dijon.inra.fr">henri.darmency@dijon.inra.fr</a>
2010-2013	Dr. Jan <b>NETLAND</b> Plant Health and Plant Protection Bioforsk Hoegskoleveien 7 N-1432 Aas	T + 47 97178710 <a href="mailto:jan.netland@bioforsk.no">jan.netland@bioforsk.no</a>
WEED RESEARCH Chairman Editorial Board	Dr. Paul <b>HATCHER</b> School of Biological Sciences, Plant Science Laboratories University of Reading GB -Reading RG6 6AS	T + 44 118 378 8091 F + 44 118 378 7464 <a href="mailto:p.e.hatcher@rdg.ac.uk">p.e.hatcher@rdg.ac.uk</a>

[Back to Content](#)



## EWRS SCIENTIFIC COMMITTEE 2010-2011

Chairman / EWRS Vice-President  
2010-2011

Prof. Dr. Paolo **BÀRBERI**  
Land Lab/Agroecology; Institute of Life Sciences  
Scuola Superiore Sant' Anna  
Piazza Martiri della Libertà 33  
IT-56127 PISA

T + 39 050 883 525  
F + 39 050 883 526  
[barberi@sssup.it](mailto:barberi@sssup.it)

Scientific Secretary  
2010-2013

Prof. Josef **SOUKUP**  
Faculty of Agrobiology, Food and Natural Resources  
Czech University of Life Sciences Prague  
Kamycka 129  
CZ-165 21 PRAGUE 6 - SUCHDOL

T + 420 224 382780  
F + 420 224 382780  
M + 420 777 206 072  
[soukup@af.czu.cz](mailto:soukup@af.czu.cz)

EWRS President  
2010-2011

Dr. Hansjörg **KRÄHMER**  
Kantstrasse 20  
D-65719 Hofheim

[Kraehmer-Hofheim@t-online.de](mailto:Kraehmer-Hofheim@t-online.de)

## EWRS Working Groups

Biological Control of Weeds

Dr. Paul **HATCHER**  
School of Biological Sciences, Plant Science Laboratories  
The University of Reading,  
GB-READING RG6 6AS

T + 44 118 378 8091  
F + 44 118 378 7464  
[p.e.hatcher@rdg.ac.uk](mailto:p.e.hatcher@rdg.ac.uk)

Crop / Weed Interactions

Dr. Lammert **BASTIAANS**  
Dept. Crop and Weed Ecology  
Wageningen University,  
Postbus 430  
NL-6700 AK WAGENINGEN

T + 31 317 48 4770  
F + 31 317 48 5572  
[lammert.bastiaans@wur.nl](mailto:lammert.bastiaans@wur.nl)

Education and Training

Prof. Dr. Jens Carl **STREIBIG**  
Dept. Agriculture and Ecology (Crop Science)  
Faculty of Life Sciences  
The University of Copenhagen  
Højebakkegaard Allé 13  
Room 20  
DK-2630 TAASTRUP

T + 45 35 33 34 57  
F + 45 35 33 34 78  
[jcs@life.ku.dk](mailto:jcs@life.ku.dk)

European Weed Mapping

Dr. Hansjörg **KRÄHMER**  
Kantstrasse 20  
D-65719 Hofheim

[Kraehmer-Hofheim@t-online.de](mailto:Kraehmer-Hofheim@t-online.de)

Germination and Early Growth

Hr. Ilse Ankjær **RASMUSSEN**  
Langagervej 23  
DK-4100 RINGSTED

T + 45 6166 0284  
[IlseA.Rasmussen@gmail.com](mailto:IlseA.Rasmussen@gmail.com)

Herbicide Resistance

Ms. Anne **THOMPSON**  
Dow AgroSciences  
Latchmore Court, Brand Street  
GB-HITCHIN , Herts, SG5 1NH

T + 44 1462 426649  
F + 44 1462 426664  
[anthompson@dow.com](mailto:anthompson@dow.com)

Invasive Plants

Mr Christian **BOHREN**  
Research Station Agroscope Changins-Wädenswil (ACW)  
P.O. Box 1012  
CH-1260 NYON 1

T + 41 22 363 44 25  
F + 41 22 363 43 94  
[christian.bohren@acw.admin.ch](mailto:christian.bohren@acw.admin.ch)

Optimisation of Herbicide Dose

Hr. Per **KUDSK**  
Dept of Integrated Pest Management  
University of Aarhus  
Forsøgsvej 1  
DK-4200 SLAGELSE

T + 45 8999 1900  
[per.kudsk@agrsci.dk](mailto:per.kudsk@agrsci.dk)

Parasitic Weeds

Dr. Maurizio **VURRO**  
Istituto di Scienze delle Produzioni Alimentari – CNR  
Via Amendola 122/O  
IT-70125 BARI

T + 39 080 5929331  
F + 39 080 5929374  
[maurizio.vurro@ispa.cnr.it](mailto:maurizio.vurro@ispa.cnr.it)

[Back to Content](#)

## EWRS Working Groups (continued)

Physical and Cultural Weed Control	Hr. Bo <b>MELANDER</b> Dept of Integrated Pest Management University of Aarhus Forsøgsvej 1 DK-4200 SLAGELSE	T + 45 8999 1900 <a href="mailto:bo.melander@agrsci.dk">bo.melander@agrsci.dk</a>
Site-Specific Weed Management	Prof. Dr. Svend <b>CHRISTENSEN</b> University of Copenhagen Faculty of Life Sciences Department of Agriculture and Ecology Højbakkegård Alle 30 DK-2630 Taastrup, Denmark	T + 45 353 33561 M +45 3058 9614 <a href="mailto:svc@life.ku.dk">svc@life.ku.dk</a>
Weed Management Systems in Vegetables	Dr. Euro <b>PANNACCI</b> Dept. of Agricultural and Environmental Sciences University of Perugia, Borgo XX Giugno 74 IT-06121 PERUGIA	T + 39 075 585 6342 F + 39 075 585 6344 <a href="mailto:pannacci@unipg.it">pannacci@unipg.it</a>
Weeds and Biodiversity	Prof. Dr. Bärbel <b>GEROWITT</b> Insitute for Land Use University of Rostock Satower Str. 48 DE-18051 ROSTOCK	T + 49 381 498 2200 F + 49 381 498 2199 <a href="mailto:baerbel.gerowitt@uni-rostock.de">baerbel.gerowitt@uni-rostock.de</a>
Weed Management in Arid and Semi-Arid Climate	Prof. Dr. Baruch <b>RUBIN</b> Faculty of Agricultural, Food and Environmental Sciences Hebrew University of Jerusalem RH Smith Inst. Plant Sci. & Genetics I-761000 REHOVOT	T +972 8 948 9248 F +972 8 936 2083 M + 972 54 8820054 <a href="mailto:rubin@agri.huji.ac.il">rubin@agri.huji.ac.il</a>

### INSTRUCTIONS FOR CONTRIBUTORS

**Deadline for contributions to be published in the following Newsletter issue:  
1 January 2012**

#### Photographic images

It is possible to include photographic material. Photographs can be processed and scanned. Pictures can be sent as negatives, positives (slides with and without frames) and as original pictures. The easiest to handle are digital pictures, which can be reproduced of a higher quality within the Newsletter. Please make sure that these images are taken at no less than 300 dpi otherwise the picture quality drops.

#### Questions

If you have any problems in writing or formatting your article, please do not hesitate to contact me. I'll be happy to assist you. As Technical Editor of the Newsletter, I prepare the final layout of the Newsletter prior to publishing. You can contact me by sending an E-mail to [newsletter@ewrs.org](mailto:newsletter@ewrs.org) / [moonen@sssup.it](mailto:moonen@sssup.it) or by calling me at +39 050 883567. I'm looking forward to receiving your contributions.

Camilla Moonen

### CHARGES FOR ADVERTISING MATERIAL IN THE NEWSLETTER

#### Advertisements in the Newsletter

The rate for an advertisement in all four editions of a year is € 400,00 / year / page. Reductions can be negotiated with the Newsletter editor for half page adverts. Maximum 4 pages of adverts in each issue.

[Back to Content](#)