

Discovery and identification of infrared counterpart candidates of four Galactic centre low mass X-ray binaries[★]

P.A. Curran¹, S. Chaty¹, and J.A. Zurita Heras²

¹ Laboratoire AIM, CEA/IRFU-Université Paris Diderot-CNRS/INSU, CEA DSM/IRFU/SAP, Centre de Saclay, F-91191 Gif-sur-Yvette, France

² François Arago Centre, APC, Université Paris Diderot, CNRS/IN2P3, CEA/DSM, Observatoire de Paris, 13 rue Watt, 75205 Paris Cedex 13, France

Preprint online version: July 12, 2011

ABSTRACT

Context. The near infrared (nIR)/optical counterparts of low mass X-ray binaries (LMXBs) are often observationally dim and reside in high source density fields which make their identification problematic; however, without such a counterpart identification we are unable to investigate many of the properties of LMXB systems.

Aims. Here, in the context of a larger identification campaign, we examine the fields of four LMXB systems near the Galactic centre, in a bid to identify nIR/optical counterparts to the previously detected X-ray point sources.

Methods. We obtain nIR/optical images of the fields with the ESO – New Technology Telescope and apply standard photometric and astrometric calibrations; these data are supplemented by *Spitzer*-GLIMPSE catalog data.

Results. On the basis of positional coincidence with the arcsecond accurate X-ray positions, we identify unambiguous counterpart candidates for XTEJ1637–498, IGR J17379–3747, IGR J17585–3057 and GX 9+1.

Conclusions. We propose tentative nIR counterparts of four LMXBs which require further investigation to confirm their associations to the X-ray sources.

Key words. X-rays: binaries – infrared: stars – X-rays: individuals: XTEJ1637–498, IGR J17379–3747, IGR J17585–3057, GX 9+1

1. Introduction

Given the main sequence or red giant nature of the companion stars of low mass X-ray binaries (LMXBs), they are intrinsically dim in the optical and near-infrared (nIR), and hence difficult to detect (see e.g., Charles & Coe 2003 for a review of the optical and nIR properties of LMXBs). The intrinsic dimness of all these sources is further compounded by the high level of optical extinction in the direction of the Galactic plane (Schlegel et al., 1998), where many LMXBs are found (Grimm et al., 2002); hence observing at nIR wavelengths, where this is less pronounced, may increase the chance of a detection. Due to their positions in the Galactic plane or centre, where the optical/nIR (OIR) source density is extremely high, accurate X-ray or radio positions are necessary to confidently identify the OIR counterparts of LMXBs and reduce the probability of chance superpositions. The required (sub)arcsecond positions are now more readily available due to missions such as *Swift*, *XMM-Newton* and *Chandra*, and when combined with the current generation of optical telescopes and instruments, increase the likelihood of counterpart discovery.

If the LMXB is a persistent source or a transient source in outburst (van Paradijs & McClintock, 1994) emission from the active accretion disk may be brighter than the companion star and more likely to be detected at OIR wavelengths; at nIR wavelengths it is even possible that a jet component will make a

significant contribution to the emission (e.g., Russell & Fender 2010). Broadband SED fitting of observed OIR counterparts can allow the various emission components (companion star and accretion disk/jet if present) to be disentangled from each other and, along with spectral lines, allows the spectral type – and hence mass – of the companion to be constrained. When combined with radial velocity information from X-ray or optical light curves this allows constraints to be placed on the mass of the compact object with which to confirm the nature of the compact object as derived from X-ray spectral or timing properties. Furthermore the relationship between the OIR and X-ray flux can be used as a diagnostic with which to derive the compact object or companion star nature, and to identify the state of the system at the time of observations (e.g., Russell et al. 2006).

Here we examine the fields of four LMXB systems near the Galactic centre, in a bid to identify nIR/optical counterparts to the previously detected X-ray point sources (Table 1). For XTEJ1637–498, IGR J17379–3747, IGR J17585–3057 and GX 9+1 we identify unambiguous counterpart candidates on the basis of positional coincidence with the arcsecond accurate X-ray positions. We have also observed a further three LMXB systems (1A 1742–294, SLX 1744–300 and IGR J17505–2644)* as part of our campaign to identify the nIR counterparts of high energy sources near the Galactic centre. Though we do not detail these observations, they confirm the results of Zolotukhin & Revnivtsev (2011) and have been used to verify our reduction methods. In section 2 we introduce our observations and reduction method while in section 3, after briefly introducing each source, we detail the results of those observations. We summarise our findings in section 4. Throughout, positions

Send offprint requests to: P.A. Curran (peter.curran@cea.fr)

* Based on observations collected at the European Organisation for Astronomical Research in the Southern Hemisphere, Chile under ESO programs 081.D-0401 & 084.D-0535 (P.I. Chaty)

Table 1. X-ray and nIR positions for the LMXBs in our study

Source	X-ray			nIR		
	RA	Declination	Err (")	RA	Declination	Err (")
XTE J1637–498 ¹	16:37:02.67	–49:51:40.6	1.8	16:37:02.66	–49:51:40.0	0.16
IGR J17379–3747 ²	17:37:58.81	–37:46:19.6	1.4	17:37:58.77	–37:46:19.9	0.32
IGR J17585–3057 ³	17:58:29.85	–30:57:01.6	0.6	17:58:29.83	–30:57:01.6	0.16
GX 9+1 ³	18:01:32.15	–20:31:46.1	0.6	18:01:32.15	–20:31:46.2	0.16

Reference to X-ray positions: ¹ Starling et al. (2008), ² Krimm et al. (2008), ³ M. Revnivtsev (private communication)

(J2000) are given with 90% confidence while all others values, including magnitudes, are given with 1σ confidence.

2. Observations and data analysis

Optical (U, B, V, R, i) and nIR (J, H, K_s) data were obtained with the ESO Faint Object Spectrograph and Camera (v.2; EFOSC2) and the Son of ISAAC (SofI) infrared spectrograph and imaging camera on the 3.58m ESO – New Technology Telescope (NTT) over two observing runs in September/October 2008 and March 2010 (Table 2). The NTT data used a dithered pattern of 3 and 9 exposures per final image in the optical and nIR respectively. Data were reduced using the IRAF package wherein crosstalk correction, flatfielding, sky subtraction, bias-subtraction and frame addition were carried out as necessary. The $3.9' \times 3.9'$ images were astrometrically calibrated against 2MASS (Skrutskie et al., 2006) or USNO-B1.0 (Monet et al., 2003) within the GAIA package and given positional errors include a $0.16''$ 2MASS systematic uncertainty (Table 1).

PSF photometry was carried out on the final images using the DAOPHOT package (Stetson, 1987) within IRAF. The magnitude of the source of interest in each field was calculated relative to a number of comparison stars in the field, including the scatter as a measure of error. The comparison stars were calibrated against Persson et al. (1998) or Landolt (1992) photometric standards (though in the case of IGR J17379–3747, no suitable optical standards were observed so magnitudes were calibrated against USNO-B1.0 sources). If a field was observed on more than one night we tested for variability, using only the error associated with the relative magnitude. As no variability was found, the tabulated magnitudes are calculated from the weighted average relative magnitudes and, since the exposures being compared were equal, the quoted exposures are of a single image only. The equation, $i - I = (0.247 \pm 0.003)(R - I)$ (Jordi et al., 2006), was used to transform the cataloged I magnitudes of the standard stars into i magnitudes with which to calibrate the images. It was again used to transform the observed i band magnitude of the object into appropriate I magnitudes. Upper limits are approximated from the dimmest observable object in the region of interest.

To supplement our own observations, we utilise data from the *Spitzer Space Telescope*'s (Werner et al., 2004) Galactic Legacy Infrared Mid-Plane Survey Extraordinaire (GLIMPSE; Benjamin et al. 2003), when available. GLIMPSE was carried out by the IRAC instrument (Fazio et al., 2004) aboard *Spitzer*, spans 65° either side of the Galactic center up to $\pm 2-4^\circ$ in latitude and includes mosaic images and catalog entries at 3.6, 4.5, 5.8 and $8.0 \mu\text{m}$.

The observed infrared magnitudes (Table 3) were first converted to flux densities, F_ν , at frequency ν , then to flux per filter, F_{filter} in units of photons $\text{cm}^{-2} \text{s}^{-1}$. This is done via $F_{\text{filter}} = 1509.18896 F_\nu (\Delta\lambda/\lambda)$ where λ and $\Delta\lambda$ are the effective wavelength and full width at half maximum of the filter in question.

Table 2. Observation log

Source	Night of observation	Filters
XTE J1637–498	September 9 2008	optical/nIR
IGR J17379–3747	September 20, 21 2008	optical, nIR
	September 29 2008	optical/nIR
IGR J17585–3057	October 2, 3 2008	optical, nIR
	March 29 2010	K_s
GX 9+1	March 28 2010	K_s

Note that the second epoch of observations, if done, were carried out over 2 nights: optical on the first, nIR on the second.

Table 3. Apparent magnitudes of the LMXB counterparts

Source	Filter	Exp (s)	Magnitude	
XTE J1637–498†	U	180	21.51 ± 0.14	
	B	180	20.77 ± 0.05	
	V	180	18.90 ± 0.05	
	R	180	17.66 ± 0.05	
	I	180	16.24 ± 0.16	
	J	90	14.80 ± 0.09	
	H	90	14.13 ± 0.10	
	K_s	90	13.55 ± 0.07	
	$3.6 \mu\text{m}$...	12.87 ± 0.09	
	$4.5 \mu\text{m}$...	12.51 ± 0.10	
IGR J17379–3747†	R	180	21.5 ± 0.3	
	I	180	20.0 ± 0.4	
	J	90	18.3 ± 0.1	
	H	90	≥ 18.0	
	K_s	90	≥ 18.0	
	IGR J17585–3057	K_s	54	14.18 ± 0.05
		$3.6 \mu\text{m}$...	11.38 ± 0.05
		$4.5 \mu\text{m}$...	10.71 ± 0.05
		$5.8 \mu\text{m}$...	10.07 ± 0.05
		$8.0 \mu\text{m}$...	9.30 ± 0.03
GX 9+1	K_s	90	15.35 ± 0.04	

† For observations with 2 epochs, magnitudes were consistent so we present the weighted average and, since the exposures being compared were equal, the exposure of a single image.

XSPEC compatible files, for Spectral Energy Distribution (SED) fitting, are then produced from the flux per filter value using the FTOOL, `f1x2xsp`.

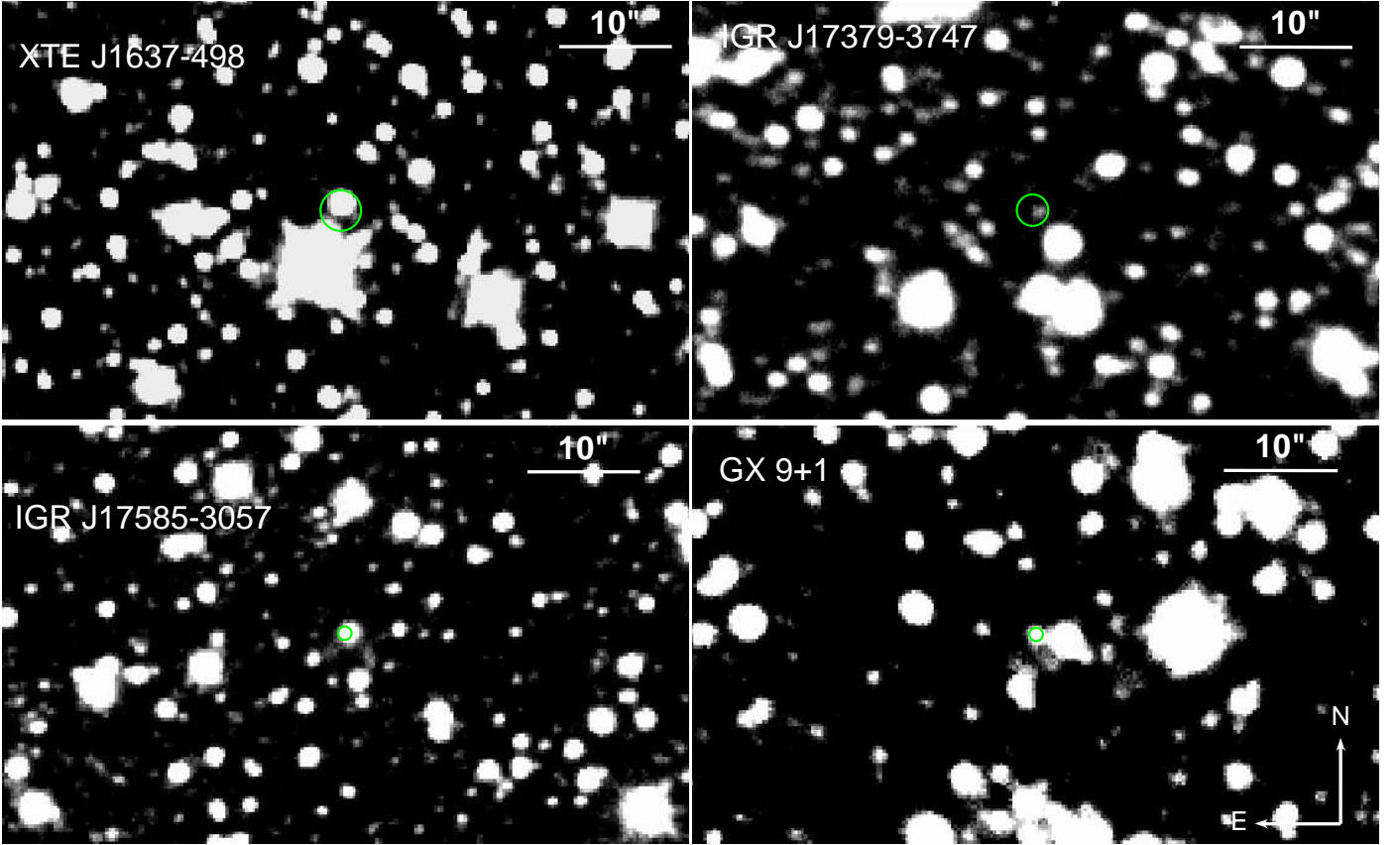


Fig. 1. NTT images ($60'' \times 35''$) of the fields of XTE J1637–498, IGR J17379–3747, IGR J17585–3057 and GX 9+1 with the X-ray 90% position marked. IGR J17379–3747 is an EFOSC2 R band image, while all others are SofI K_S band images; all have a common scaling and orientation.

3. Results

3.1. XTE J1637–498

The transient X-ray source, XTE J1637–498, was first detected by the *Rossini X-ray Timing Explorer* (RXTE) at a 2–10 keV flux of 2–4 mCrab; an outburst which lasted approximately from August 25 to September 5 2008 (Markwardt et al., 2008a). Follow up observations by the *Swift* X-ray Telescope (XRT) allowed the position to be refined (Table 1; Starling et al. 2008). Based on a power law fit (photon index 1.5 ± 0.4) of the XRT spectrum, Wijnands et al. (2008) suggested that the source was an LMXB, though they cautioned that another system type (i.e., high mass X-ray binary) could not be excluded. Starling et al. also noted that an optical source, consistent with 2MASS object J16370267–4951401, was detected in the v band by the *Swift* Ultraviolet & Optical Telescope (UVOT), within the XRT positional error. No further analysis of this source was published so its true classification remains unknown.

Within the X-ray positional error, we find that an optical and nIR source is detected in all filters (Figure 1; best seeing was $\sim 0.95''$ in nIR filters and 1.0 – $1.1''$ in optical filters). From examination of our second epoch nIR images we derive a position of RA, Dec = 16:37:02.66 –49:51:40.0 ($\pm 0.16''$), consistent with 2MASS object J16370267–4951401, noted by Starling et al. (2008). We find no variability (≤ 0.05 magnitudes) of the counterpart between the two epochs so present only the average values (Table 3). We note that the observed magnitudes in J , H and K_S are consistent with the cataloged 2MASS values; this is not surprising, given that the observations were obtained

after the X-ray outburst had faded. Furthermore we note that this source is also tabulated in the GLIMPSE catalog (G335.4256–01.7828).

Figure 2 shows the spectral shape of the counterpart of XTE J1637–498, including the GLIMPSE data. Also plotted are the fluxes corrected for a Galactic extinction in that direction (Schlegel et al., 1998) of $E_{B-V} = 2.143^1$ ($A_K \sim 0.8$, $A_V \sim 7.1$; Cardelli et al. 1989), though this should be considered as an upper limit. Though we are unable to find a single model – for any value of Galactic extinction – that fits both the NTT and GLIMPSE data, we find that the NTT data alone can be fit by black body radiation at a temperature of 3100–12800 K and corresponding extinctions of $0.4 < E_{B-V} < 2.0$. However, when extended to the *Spitzer* data, this model underestimates the flux at those wavelengths. In fact, the *Spitzer* data itself implies a power law ($F_\nu \propto \nu^\alpha$) of spectral index $1.0 < \alpha < 1.7$ for the same range of extinctions as implied by the black body fit to the NTT data. A power law of similar slope is not a good fit to the NTT data alone or the NTT and *Spitzer* data combined ($\chi^2_\nu \gg 1$). This implies that there is excess emission at the *Spitzer*–IRAC wavelengths (see section 4), either due to intrinsic IR excess or an excess at the time of the *Spitzer* observations which, as catalog magnitudes, were not simultaneous with the NTT observations.

¹ Note that these extinctions should be treated with caution as estimates so close to the Galactic plane (< 5 deg) are unreliable.

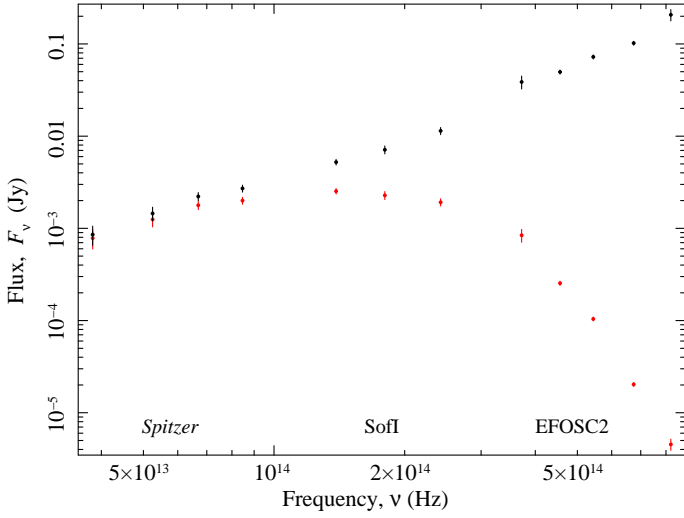


Fig. 2. Flux versus frequency plot for XTE J1637–498: uncorrected (lower) and corrected (upper) for Galactic extinction in that direction of $E_{B-V} = 2.143$.

3.2. IGR J17379–3747

Outbursts from IGR J17379–3747² were first reported from the *International Gamma-Ray Astrophysics Satellite* (INTEGRAL) by Chelovekov et al. (2006) with a fuller investigation of INTEGRAL and other observations presented in Chelovekov & Grebenev (2010). Chelovekov et al. (2006) classified the source as an X-ray burster – a weakly magnetized, accreting neutron star in a LMXB system – on the basis of a type-I burst or a thermonuclear explosion, due to the unstable burning of H and He on the neutron star surface (Hoffman et al., 1978). During the 2008 outburst the X-ray position was refined to arcsecond precision (Table 1; Krimm et al. 2008) by the *Swift*-XRT.

At the X-ray position a new source is detected in our *i* and *R* images on both nights (Figure 1; best seeing was $\sim 1.4''$ in nIR filters and $\sim 1.2''$ in optical filters). The source exhibits no variability (< 0.05 , < 0.1 magnitudes respectively) between the 2 epochs which are separated by 3 days (we present the average magnitudes). The lack of variability is not surprising since observations were taken after the 2008 September 2–21 X-ray outburst had faded (Markwardt et al., 2008b). The source is also detected in the second epoch *J* band image but not in the first, though the magnitude limit on that night is consistent with the detected magnitude. We note that the counterpart is at the edge of the psf of a nearby, bright 2MASS object (J17375858–3746228; $J = 13.210$, $H = 12.067$, $K_s = 11.743$). There was no detections in the *U*, *B* and *V* bands and the lack of suitable optical standard stars on either night have lead us to omit their magnitude limits. The position of the optical/nIR counterpart was derived as RA, Dec = 17:37:58.77 –37:46:19.9 ($\pm 0.32''$) from the *R* and *J* band images. The spectral shape of the proposed OIR counterpart of IGR J17379–3747 (Figure 3) is not particularly constraining but is consistent with stellar-like black body emission for a realistic range of temperatures, at extinctions up to the value for Galactic extinction in that direction (Schlegel et al., 1998) of $E_{B-V} = 1.506$ ¹ ($A_K \sim 0.5$; Cardelli et al. 1989). This region is

² While Chelovekov et al. (2006) and Chelovekov & Grebenev (2010) refer to the source by differing IGR designations (IGR J17364–2711 and IGR J17380–3749), herein we shall adhere to that of the INTEGRAL catalog (Bird et al., 2007, 2010).

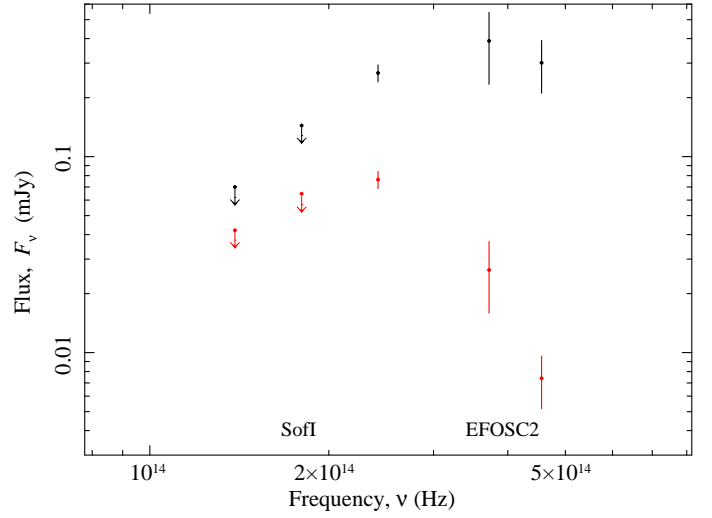


Fig. 3. Flux versus frequency plot for IGR J17379–3747: uncorrected (lower) and corrected (upper) for Galactic extinction in that direction of $E_{B-V} = 1.506$.

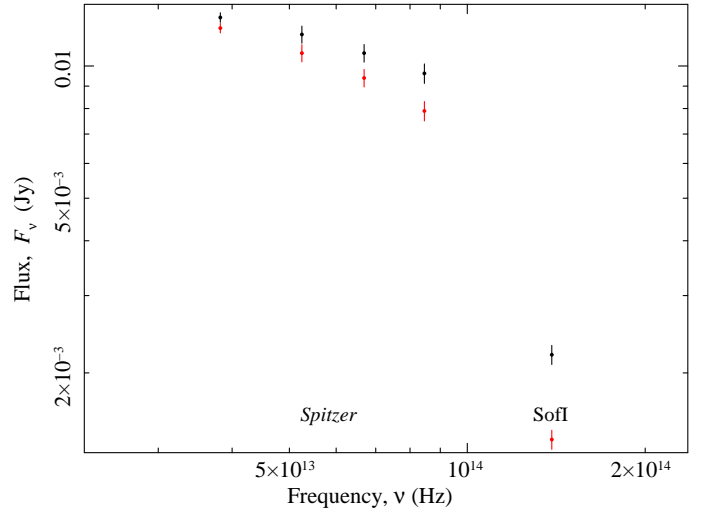


Fig. 4. Flux versus frequency plot for IGR J17585–3057: uncorrected (lower) and corrected (upper) for Galactic extinction in that direction of $E_{B-V} = 1.302$.

not covered by the GLIMPSE survey so we are unable to extend the SED redwards.

3.3. IGR J17585–3057

Detected by INTEGRAL (Bird et al., 2007, 2010), IGR J17585–3057 is assumed to be a LMXB based on Galactic position and the lack of an alternative classification (Revnitsev et al., 2008). Monitored as part of both the INTEGRAL all-sky survey in hard X-rays (Krivonos et al., 2007) and the *Swift*-BAT 58-Month Hard X-ray Survey (Baumgartner et al., 2010) there has been no evidence of flux variation. No further analysis of this source was published so its true classification remains unknown, though an accurate X-ray position was obtained by *Chandra* (Table 1; M. Revnitsev, private communication).

At the X-ray position we find a bright, $K_s = 14.183 \pm 0.05$ counterpart in our single SofI image of the field (Figure 1; seeing $\sim 0.8''$) and we derive a position of RA, Dec = 17:58:29.83

–30:57:01.6 ($\pm 0.1''$). This coincides with a GLIMPSE catalog source (G359.6862-03.4261), the magnitudes of which we reproduce in Table 3. From the SED (Figure 4), it is clear that the extrapolation of the *Spitzer* data overestimates the K_S magnitude significantly. In fact the *Spitzer* data implies a spectral index of $\alpha = -0.37 \pm 0.10$ (when optical extinction is set to that of Galactic extinction in that direction (Schlegel et al., 1998), $E_{B-V} = 1.302^1$; $A_K \sim 0.4$; Cardelli et al. 1989) but then drops by almost an order of magnitude, requiring a steepening to $\alpha \gtrsim 5$ to agree with the K_S flux. This implies either intrinsic excess emission at the *Spitzer*-IRAC wavelengths or it is possible that the source is variable, though without multiple photometric observations, we cannot test this.

3.4. GX 9+1

The persistent X-ray source GX 9+1, a.k.a. Sgr X–3, was initially discovered by sounding rockets (Bradt et al., 1968; Mayer et al., 1970) and later confirmed by the first dedicated X-ray astronomy satellite, Uhuru (as 2U 1758-20; Giacconi et al. 1971, 1972). Thereafter, it was observed by most other X-ray missions which revealed that the source is likely an ‘Atoll’ source, a class of neutron star LMXB (e.g., Langmeier et al. 1985; Hasinger & van der Klis 1989; Schulz et al. 1989). Previous searches for an optical or nIR counterpart (Gottwald et al., 1991; Naylor et al., 1991) did not yield any plausible candidates due to the lack of an accurate X-ray position, which is now available from *Chandra* observations (Table 1; M. Revnivtsev, private communication).

At the X-ray position we detect a $K_S = 15.35 \pm 0.04$ source in our single SofI image of the field (Figure 1; seeing $\sim 1.4''$) and we derive a position of RA, Dec = 18:01:32.15 –20:31:46.2 ($\pm 0.16''$). We note that there is also a source directly to the West which appears in the GLIMPSE (G009.0755+01.1545) and 2MASS (J18013196–2031464; $K_S = 13.263 \pm 0.055$) catalogs but we find that it is $> 6\sigma$ from the X-ray position and is hence likely unrelated to GX 9+1.

4. Discussion and conclusions

To approximate the probability of a chance superposition of the 90% X-ray positions with random sources in the respective fields, we calculate $P \approx \rho_N \times A_{Err}$; where ρ_N is the surface area number density of observed sources down to the limiting magnitude and A_{Err} is the area of the X-ray positional error. The probability of chance coincidence for XTE J1637–498 and IGR J17379–3747 are quite high at 86% and 28% respectively, due to a large number of sources in the deep fields but more significantly, the radius of the X-ray positional errors. The importance of sub-arcsecond positions from e.g. *Chandra* is further illustrated by the significantly lower probabilities of IGR J17585–3057 and GX 9+1 (8% and 7%) which have comparable number densities to the previous two fields but much more accurate X-ray positions. The probability of chance superposition could be reduced further if we limited our search to sources of specific magnitude ranges but due to a lack of information on these sources, we make no such assumption.

On the basis of positional coincidence with the arcsecond accurate X-ray positions, we suggest unambiguous (in so far as there is only one per source) counterpart candidates for four LMXBs near the Galactic centre. We caution that given the probability of chance superpositions in these crowded fields, the associations are tentative and require further investigations of e.g.,

spectral type, variability, distance, to confirm the associations with the X-ray sources. The spectral shapes of the counterpart candidates are not particularly constraining but, in general, could be consistent with stellar-like black body emission in the optical/nIR but with an excess at the longer, *Spitzer*, wavelengths, as for XTE J1637–498. The excess could be due to warm circumbinary dust, likely related to the formation of the compact object (e.g., Rahoui et al. 2010) or to non-thermal, synchrotron jet emission (e.g., Gelino et al. 2010). Further, possibly simultaneous, photometric and spectroscopic observations are required to disentangle the different emission components and identify the spectral type of the companion star, if it is detected over the other possible emission mechanisms.

Acknowledgements. We thank the referee for their constructive comments and M. Revnivtsev for supplying *Chandra* positions for two of the sources in our study. This work was supported by the Centre National d’Etudes Spatiales (CNES) and is based on observations obtained with MINE: the Multi-wavelength INTEGRAL Network. This research has made use of NASA’s Astrophysics Data System and the VizieR catalogue access tool, CDS, Strasbourg. IRAF is distributed by the National Optical Astronomy Observatory, which is operated by the Association of Universities for Research in Astronomy (AURA) under cooperative agreement with the National Science Foundation. GAIA was created by the now closed Starlink UK project funded by the Particle Physics and Astronomy Research Council (PPARC), and has been more recently supported by the Joint Astronomy Centre Hawaii funded by PPARC and now its successor organisation, the Science and Technology Facilities Council (STFC).

References

- Baumgartner W. H., Tueller J., Markwardt C., Skinner G., 2010, The Swift-BAT 58 Month Survey, in Bulletin of the American Astronomical Society, Vol. 42, AAS/High Energy Astrophysics Division #11, p. 675
- Benjamin R. A., Churchwell E., Babler B. L., et al., 2003, PASP, 115, 953
- Bird A. J., Bazzano A., Bassani L., et al., 2010, ApJS, 186, 1
- Bird A. J., Malizia A., Bazzano A., et al., 2007, ApJS, 170, 175
- Bradt H., Naranan S., Rappaport S., Spada G., 1968, ApJ, 152, 1005
- Cardelli J. A., Clayton G. C., Mathis J. S., 1989, ApJ, 345, 245
- Charles P. A., Coe M. J., 2003, arXiv, 0308020
- Chelovekov I. V., Grebenev S. A., 2010, Astronomy Letters, 36, 895
- Chelovekov I. V., Grebenev S. A., Sunyaev R. A., 2006, Astronomy Letters, 32, 456
- Fazio G. G., Hora J. L., Allen L. E., et al., 2004, ApJS, 154, 10
- Gelino D. M., Gelino C. R., Harrison T. E., 2010, ApJ, 718, 1
- Giacconi R., Kellogg E., Gorenstein P., Gursky H., Tananbaum H., 1971, ApJ, 165, L27
- Giacconi R., Murray S., Gursky H., et al., 1972, ApJ, 178, 281
- Gottwald M., Steinle H., Pietsch W., Graser U., 1991, A&AS, 89, 367
- Grimm H.-J., Gilfanov M., Sunyaev R., 2002, A&A, 391, 923
- Hasinger G., van der Klis M., 1989, A&A, 225, 79
- Hoffman J. A., Marshall H. L., Lewin W. H. G., 1978, Nature, 271, 630
- Jordi K., Grebel E. K., Ammon K., 2006, A&A, 460, 339
- Krimm H. A., Kennea J. A., Evans P. A., Markwardt C. B., 2008, The Astronomer’s Telegram, 1714
- Krivonos R., Revnivtsev M., Lutovinov A., et al., 2007, A&A, 475, 775
- Landolt A. U., 1992, AJ, 104, 340
- Langmeier A., Sztajno M., Truemper J., Hasinger G., 1985, Space Sci. Rev., 40, 367
- Markwardt C. B., Krimm H., Wijnands R., Swank J. H., 2008b, The Astronomer’s Telegram, 1709
- Markwardt C. B., Pereira D., Swank J. H., 2008a, The Astronomer’s Telegram, 1699
- Mayer W., Bradt H. V., Rappaport S., 1970, ApJ, 159, L115
- Monet D. G., Levine S. E., Canzian B., et al., 2003, AJ, 125, 984
- Naylor T., Charles P. A., Longmore A. J., 1991, MNRAS, 252, 203
- Persson S. E., Murphy D. C., Krzeminski W., Roth M., Rieke M. J., 1998, AJ, 116, 2475
- Rahoui F., Chaty S., Rodriguez J., et al., 2010, ApJ, 715, 1191
- Revnivtsev M., Lutovinov A., Churazov E., et al., 2008, A&A, 491, 209
- Russell D. M., Fender R. P., 2010, arXiv, 1001.1244
- Russell D. M., Fender R. P., Hynes R. I., et al., 2006, MNRAS, 371, 1334
- Schlegel D. J., Finkbeiner D. P., Davis M., 1998, ApJ, 500, 525
- Schulz N. S., Hasinger G., Truemper J., 1989, A&A, 225, 48
- Skrutskie M. F., Cutri R. M., Stiening R., et al., 2006, AJ, 131, 1163

- Starling R., Evans P., Wijnands R., 2008, *The Astronomer's Telegram*, 1704
Stetson P. B., 1987, *PASP*, 99, 191
van Paradijs J., McClintock J. E., 1994, *A&A*, 290, 133
Werner M. W., Roellig T. L., Low F. J., et al., 2004, *ApJS*, 154, 1
Wijnands R., Linares M., Degenaar N., Markwardt C. B., 2008, *The Astronomer's Telegram*, 1700
Zolotukhin I. Y., Revnivitsev M. G., 2011, *MNRAS*, 411, 620