

# A mathematical model for unsteady mixed flows in closed water pipes

Christian Bourdarias\*

Mehmet Ersoy†

Stéphane Gerbi‡

**Abstract.** We present the formal derivation of a new unidirectional model for unsteady mixed flows in non uniform closed water pipe. In the case of free surface incompressible flows, the **FS**-model is formally obtained, using formal asymptotic analysis, which is an extension to more classical shallow water models. In the same way, when the pipe is full, we propose the **P**-model, which describes the evolution of a compressible inviscid flow, close to gas dynamics equations in a nozzle. In order to cope the transition between a free surface state and a pressured (i.e. compressible) state, we propose a mixed model, the **PFS**-model, taking into account changes of section and slope variation.

**Key words.** Shallow water equations, unsteady mixed flows, free surface flows, pressurized flows, curvilinear transformation, asymptotic analysis.

## Notations concerning geometrical variables

- $(0, \mathbf{i}, \mathbf{j}, \mathbf{k})$ : Cartesian reference frame
- $\omega(x, 0, b(x))$ : parametrization in the reference frame  $(0, \mathbf{i}, \mathbf{j}, \mathbf{k})$  of the plane curve  $\mathcal{C}$  which corresponds to the main flow axis
- $(\mathbf{T}, \mathbf{N}, \mathbf{B})$ : Serret-Frenet reference frame attached to  $\mathcal{C}$  with  $\mathbf{T}$  the tangent,  $\mathbf{N}$  the normal and  $\mathbf{B}$  the bi-normal vector
- $X, Y, Z$ : local variable in the Serret Frenet reference frame with  $X$  the curvilinear abscissa,  $Y$  the width of pipe,  $Z$  the  $\mathbf{B}$ -coordinate of any particle.
- $\sigma(X, Z) = \beta(X, Z) - \alpha(X, Z)$ : width of the pipe at  $Z$  with  $\beta(X, Z)$  (resp.  $\alpha(X, Z)$ ) is the right (resp. left) boundary point at altitude  $Z$
- $\theta(X)$ : angle  $(\mathbf{i}, \mathbf{T})$
- $S(X)$ : cross-section area
- $R(X)$ : radius of the cross-section  $S(X)$
- $\mathbf{n}_{wb}$ : outward normal vector to the wet part of the pipe
- $\mathbf{n}$ : outward normal vector at the boundary point  $m$  in the  $\Omega$ -plane

---

\*Laboratoire de Mathématiques, Université de Savoie, 73376 Le Bourget du Lac, France, (Christian.Bourdarias@univ-savoie.fr).

†BCAM - Basque Center for Applied Mathematics, Bizkaia Technology Park, Building 500. 48160 Derio Basque Country - Spain, (mersoy@bcamath.org).

‡Laboratoire de Mathématiques, Université de Savoie, 73376 Le Bourget du Lac, France, (Stephane.Gerbi@univ-savoie.fr).

## Notations concerning the free surface (FS) part

- $\Omega(t, X)$ : free surface cross section
- $H(t, X)$ : physical water height
- $h(t, X)$ :  $Z$ -coordinate of the water level
- $\mathbf{n}_{\text{fs}}$ : outward  $\mathbf{B}$ -normal vector to the free surface
- $A$ : wet area
- $Q$ : discharge
- $\rho_0$ : density of the water at atmospheric pressure  $p_0$

## Notations concerning the pressurised part

- $\Omega(X)$ : pressurised cross section
- $\rho(t, X)$ : density of the water
- $\beta$ : water compressibility coefficient
- $c = \frac{1}{\sqrt{\beta \rho_0}}$ : sonic speed
- $A = \frac{\rho}{\rho_0} S$ : FS equivalent wet area
- $Q$ : FS equivalent discharge

## Notations concerning the PFS model

- $\mathbf{S}$ : the physical wet area:  $\mathbf{S} = A$  if the state is free surface,  $S$  otherwise
- $\mathcal{H}$ : the  $Z$  coordinate of the water level:  $\mathcal{H} = h$  if the state is free surface,  $R$  otherwise

## Other notations

- Bold characters are used for vectors except for  $\mathbf{S}$

# 1 Introduction

The presented work takes place in a more general framework: the modelling of unsteady mixed flows in any kind of closed domain taking into account the cavitation problem and air entrapment. We are interested in flows occurring in closed pipe with non uniform sections, where some parts of the flow can be free surface (it means that only a part of the pipe is filled) and other parts are pressurised (it means that the pipe is full). The transition phenomenon between the two types of flows occurs in many situations such as storm sewers, waste or supply pipes in hydroelectric installations. It can be induced by sudden change in the boundary conditions as failure pumping. During this process, the pressure can reach severe values and cause damages. The simulation of such a phenomenon is thus a major challenge and a great amount of works was devoted to it these last years (see [15],[24],[25],[12] for instance). Recently Fuamba [17] proposed a model for the transition from a free surface flow to a pressurised one in a way very close to ours.

The classical shallow water equations are commonly used to describe free surface flows in open channels. They are also used in the study of mixed flows using the Preissman slot artefact (see for example [12, 25]). However, this technique does not take into account the depressurisation

phenomenon which occurs during a water hammer. On the other hand the Allievi equations, commonly used to describe pressurised flows, are written in a non-conservative form which is not well adapted to a natural coupling with the shallow water equations.

A model for the unsteady mixed water flows in closed pipes and a finite volume discretization have been previously studied by two of the authors [6] and a kinetic formulation has been proposed in [8]. We propose here the **PFS**-model which tends to extend naturally the work in [6] in the case of a closed pipe with non uniform section. For the sake of simplicity, we do not deal with the deformation of the domain induced by the change of pressure. We will consider only an infinitely rigid pipe.

The paper is organized as follows. The first section is devoted to the derivation of the free surface model from the 3D incompressible Euler equations which are written in a suitable local reference frame in order to take into account the local effects produced by the changes of section and the slope variation. To this end, we present two models derived by two techniques inspired from the works in [3] and [18]. The first one consists in taking the mean value in the Euler equations along the normal section to the main axis. The obtained model provides a description taking in account the geometry of the domain, namely the changes of section and also the inertia strength produced by the slope variation. The second one is a formal asymptotic analysis. In this approach, we seek for an approximation at the first order and, by comparison with the previous model, the term related to the inertia strength vanishes since it is a term of second order. We obtain the FS-model. In Section 3, we follow the derivation of the FS-model and we derive the model for pressurised flows, called P-model, from the 3D compressible Euler equations by a formal asymptotic analysis. Writing the source terms into a unified form and using the same couple of conservative unknowns as in [7], we propose in Section 4, a natural model for mixed flows, that we call **PFS**-model, which ensures the continuity of the unknowns and the source terms.

## 2 Formal derivation of the free surface model

The classical shallow water equations are commonly used to describe physical situations like rivers, coastal domains, oceans and sedimentation problems. These equations are obtained from the incompressible Euler system (see e.g. [1, 19]) or from the incompressible Navier-Stokes system (see for instance [10, 11, 18, 21]) by several techniques (e.g. by direct integration or asymptotic analysis or as in [14] and especially as proposed by Bouchut *et al.* [3, 4] from which the **PFS**-model is based).

In order to formally derive a unidirectional shallow water type equation for free surface flow in closed water pipe with varying slope and section, we consider that the length of the pipe is larger than the diameter and we write the incompressible Euler equations in a local Serret-Frenet frame attached to a given plane curve (generally the main pipe axis, see Remark 4.1). Then, taking advantage of characteristic scales, we perform a thin layer asymptotic analysis with respect to some small parameter  $\varepsilon = \frac{H}{L}$  which is also assumed to be proportional to the vertical,  $W$  and horizontal,  $U$  ratio of the fluid movements, i.e.  $\varepsilon = \frac{W}{U}$ . This assumption translates the fact that in such domain, the flow follows a main flow axis. Finally, the equations are vertically averaged along orthogonal sections to the given plane curve and we get the **Free Surface** model called **FS**-model.

Throughout this section, we only consider pipes with variable circular section. However, this analysis can be easily adapted to any type of closed pipes.

Let  $(O, \mathbf{i}, \mathbf{j}, \mathbf{k})$  be a convenient Cartesian reference frame, for instance the canonical basis of  $\mathbb{R}^3$ . The Euler equations in Cartesian coordinate are :

$$\begin{cases} \operatorname{div}(\rho_0 \mathbf{U}) &= 0 \\ \partial_t(\rho_0 \mathbf{U}) + \rho_0 \mathbf{U} \cdot \nabla \mathbf{U} + \nabla P &= \rho_0 \mathbf{F} \end{cases} \quad (1)$$

where  $\mathbf{U}(t, x, y, z)$  is the velocity field of components  $(u, v, w)$ ,  $P = p(t, x, y, z)I_3$  is the isotropic pressure tensor,  $\rho_0$  is the density of the water at atmospheric pressure  $p_0$  and  $\mathbf{F}$  is the exterior strength of gravity given by:  $\mathbf{F} = -g \begin{pmatrix} -\sin \theta(x) \\ 0 \\ \cos \theta(x) \end{pmatrix}$  where  $\theta(x)$  is the angle  $(\mathbf{i}, \mathbf{T})$  in the  $(\mathbf{i}, \mathbf{k})$ -plane (c.f. FIG. 1 or FIG. 2) with  $\mathbf{T}$  the tangent vector (defined below) and  $g$  is the gravity constant.

We introduce a characteristic function,  $\phi$ , in order to define the fluid area (as in [18, 21]) :

$$\phi = \begin{cases} 1 & \text{if } z \in \Omega(t, x), \\ 0 & \text{otherwise} \end{cases} \quad (2)$$

where  $\Omega(t, x)$  is the wet section (5)). Using the divergence free equation, we obviously find the equation on  $\phi$ :

$$\partial_t(\rho_0 \phi) + \operatorname{div}(\rho_0 \phi \mathbf{U}) = 0. \quad (3)$$

**Remark 2.1.** *This equation allows to get the kinematic free surface condition:*

any free surface particle is advected by the fluid velocity.

On the wet boundary ( $\mathbf{fm}$ ), we assume a no-leak condition:  $\mathbf{U} \cdot \mathbf{n}_{\mathbf{fm}} = 0$  where  $\mathbf{n}_{\mathbf{fm}}$  is the outward unit normal vector to the wet boundary (as displayed on FIG. 2). We also assume that the pressure at the free surface level is equal to the atmospheric pressure (which is assumed to be zero in the rest of the paper for the sake of simplicity).

We define the domain  $\Omega_F(t)$  of the flow at time  $t$  as the union of sections,  $\Omega(t, x)$ , assumed to be simply connected compact sets, orthogonal to some plane curve  $\mathcal{C}$ . We define the parametric representation of this curve by  $x \rightarrow (x, 0, b(x))$  in the plane  $(O, \mathbf{i}, \mathbf{j}, \mathbf{k})$  where  $\mathbf{k}$  is the vertical axis,  $b(x)$  is the elevation of the point  $\omega(x, 0, b(x))$  in the  $(O, \mathbf{i}, \mathbf{j})$ -plane (c.f. FIG. 1).

Setting

$$X = \int_{x_0}^x \sqrt{1 + \left( \frac{d b(\xi)}{d \xi} \right)^2} d\xi \quad (4)$$

the curvilinear variable where  $x_0$  is a given abscissa,  $Y = y$ , the variable ‘‘width’’ and  $Z$  the  $\mathbf{B}$ -coordinate (i.e. the elevation of a fluid particle  $M$  along the  $\mathbf{B}$  vector as defined below), we define the local reference of origin  $\omega(x, 0, b(x))$  and by the basis  $(\mathbf{T}, \mathbf{N}, \mathbf{B})$  where  $\mathbf{T}$  is the unit tangent vector,  $\mathbf{N}$  the unit normal vector and  $\mathbf{B}$  the unit bi-normal vector attached to the plane curve  $\mathcal{C}$  at the point  $\omega(x, 0, b(x))$  (see FIG. 1 and FIG. 3 for notations). In the  $(O, \mathbf{i}, \mathbf{k})$ -plane, the vector  $\mathbf{B}$  is normal to the curve  $\mathcal{C}$ .

With these notations, for every point  $\omega \in \mathcal{C}$ , the wet section  $\Omega(t, X)$  can be defined by the following set:

$$\Omega(t, X) = \{(Y, Z) \in \mathbb{R}^2; Z \in [-R(X), -R(X) + H(t, X)], Y \in [\alpha(X, Z), \beta(X, Z)]\} \quad (5)$$

where  $R(X)$  is the radius of the pipe section  $S(X) = \pi R^2(X)$  and  $H(t, X)$  is the physical water height. We note  $\alpha(X, Z)$  (respectively  $\beta(X, Z)$ ) the left (respectively right) boundary point at elevation  $Z$ , for  $-R(X) \leq Z \leq R(X)$  (as displayed on FIG. 3). We also assume that the support of the functions  $\alpha(\cdot, z)$  and  $\beta(\cdot, z)$  are compact in  $[-R(X), R(X)]$ . Finally, we note the  $Z$ -coordinate of the water height by  $h(t, X) = -R(X) + H(t, X)$ .

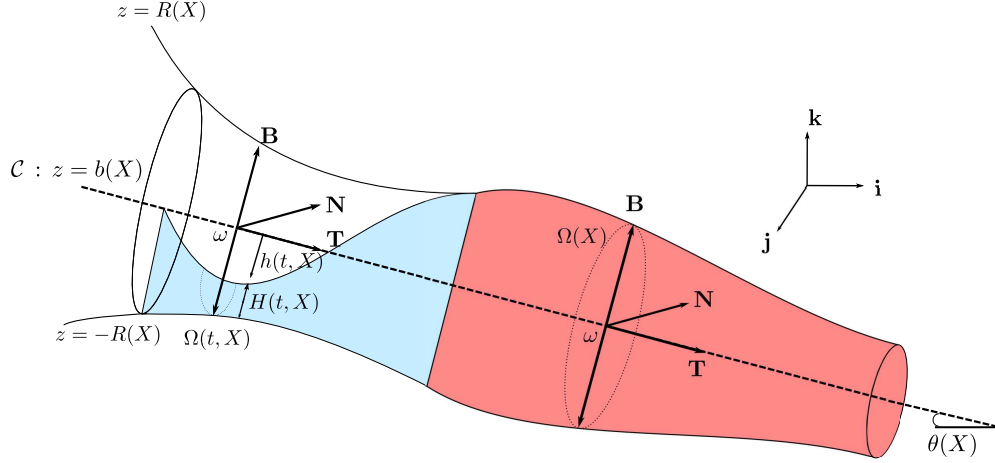


Figure 1: Geometrics characteristics of the pipe  
Mixed flows: free surface and pressurized

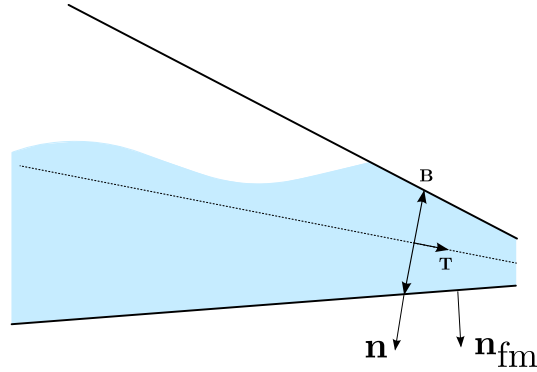


Figure 2: outward unit normal vector  $\mathbf{n}_{fm} \neq \mathbf{n}$  (except for a pipe with uniform section)

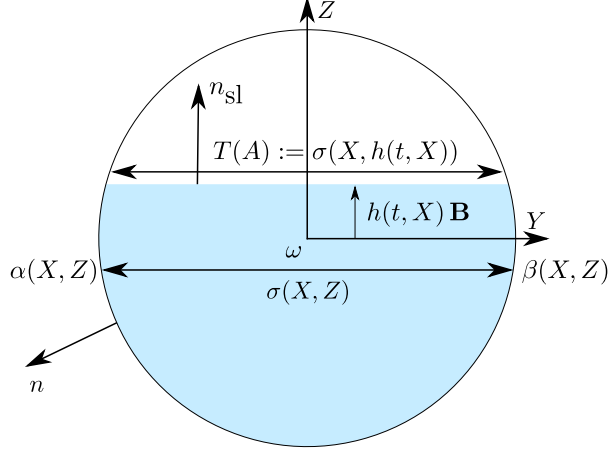


Figure 3: Transversale section  $\Omega(t, X)$  at the point  $\omega$  for a free surface flow

In what follows, we will assume that the following condition holds:

(H) Let  $\mathcal{R}(x)$  bet the algebraic curvature radius at the point  $\omega(x, 0, b(x))$ . Then, for every  $x \in \mathcal{C}$ , we have:

$$|\mathcal{R}(x)| > R(x).$$

**Remark 2.2.** *This geometric condition ensure that the application  $\mathcal{T} : (x, y, z) \rightarrow (X, Y, Z)$  is a  $C^1$ -diffeomorphism. In other words, it simply means that for a given fluid particle, there exists a unique point  $\omega \in \mathcal{C}$  as displayed on FIG. 4.*

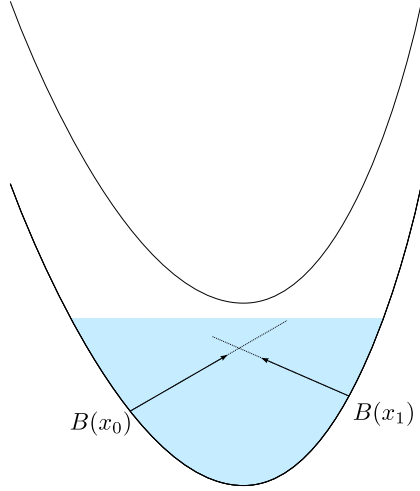


Figure 4: Forbidden case by assumption (H) :

## 2.1 Incompressible Euler equations in curvilinear coordinates

Following Bouchut *et al.* [3, 4], we write the previous system (1) in the local frame of origin  $\omega(x, 0, b(x))$  and of basis  $(\mathbf{T}, \mathbf{N}, \mathbf{B})$  by the following change of variables  $\mathcal{T} : (x, y, z) \rightarrow (X, Y, Z)$  using the divergence chain rule that we recall here:

**Lemma 2.1.** *Let  $(X, Y, Z) \mapsto \mathcal{T}(X, Y, Z) = (x, y, z)$  be a  $C^1$ -diffeomorphism and  $\mathcal{A}^{-1} = \nabla_{(X, Y, Z)} \mathcal{T}$  be the Jacobian matrix with determinant  $J$ .*

*Then, for every vector field  $\Phi$ , we have:*

$$J \operatorname{div}_{(x, y, z)} \Phi = \operatorname{div}_{(X, Y, Z)} (J \mathcal{A} \Phi),$$

and, for every scalar function  $f$  :

$$\nabla_{(x, y, z)} f = \mathcal{A}^t \nabla_{(X, Y, Z)} f,$$

where  $\mathcal{A}^t$  is the transposed matrix of  $\mathcal{A}$ .

Let  $(U, V, W)^t$  be the components of the vector field in variables  $(X, Y, Z)$ ,

$$(U, V, W)^t = \Theta(u, v, w)^t$$

where  $\Theta$  is the rotation matrix generated around the axis  $\mathbf{j}$ :

$$\Theta = \begin{pmatrix} \cos \theta & 0 & \sin \theta \\ 0 & 1 & 0 \\ -\sin \theta & 0 & \cos \theta \end{pmatrix}.$$

### 2.1.1 Transformation of the divergence equation

A given point  $M$  of coordinates  $(x, y, z)$  such that:

$$M(x, y, z) = (x - Z \sin \theta(x), y, x + Z \cos \theta(x)) \quad (6)$$

(in the  $(O, \mathbf{i}, \mathbf{j}, \mathbf{k})$ -basis) has  $(X, Y, Z)$ -coordinate in the local frame generated by the basis  $(\mathbf{T}, \mathbf{N}, \mathbf{B})$  from origin  $\omega$  and the matrix  $\mathcal{A}^{-1}$  (appearing in Lemma 2.1) reads as follows:

$$\begin{aligned} \mathcal{A}^{-1} &= \begin{pmatrix} \frac{dx}{dX} - Z \frac{d\theta}{dX} \cos \theta(X) & 0 & \sin \theta(X) \\ 0 & 1 & 0 \\ \frac{db}{dX} - Z \frac{d\theta}{dX} \sin \theta(X) & 0 & \cos \theta(X) \end{pmatrix} \\ &= \begin{pmatrix} J \cos \theta & 0 & \sin \theta \\ 0 & 1 & 0 \\ J \sin \theta & 0 & \cos \theta \end{pmatrix} \end{aligned}$$

where

$$\frac{dx}{dX} = \frac{1}{\sqrt{1 + \left( \frac{db}{dx}(x(X, Y, Z)) \right)^2}} = \cos \theta(X), \quad \frac{db(X)}{dX} = \sin \theta(X),$$

and

$$J(X, Y, Z) := \det(\mathcal{A}^{-1}) = 1 - Z \frac{d\theta(X)}{dX}$$

with  $J(X, Y, Z) = J(X, Z)$ .

Then, we have:

$$\mathcal{A} = \frac{1}{J} \begin{pmatrix} \cos \theta & 0 & \sin \theta \\ 0 & 1 & 0 \\ -J \sin \theta & 0 & J \cos \theta \end{pmatrix} \quad (7)$$

and using Lemma (2.1), the free divergence equation in variables  $(X, Y, Z)$  is,

$$J \operatorname{div}_{x,y,z}(\mathbf{U}) = \operatorname{div}_{X,Y,Z} \begin{pmatrix} U \\ JV \\ JW \end{pmatrix} = 0,$$

i.e.

$$\partial_X U + \partial_Y (JU) + \partial_Z (JW) = 0. \quad (8)$$

**Remark 2.3.** *The application  $(x, y, z) \rightarrow M(x, y, z)$  is a  $C^1$ -diffeomorphism since  $J(X, Z) > 0$  in view of the assumption (H).*

### 2.1.2 Transformation of the equation of conservation of the momentum

Following the previous paragraph, using Lemma 2.1 to the scalar convection equation  $\frac{df}{dt}$  characterized by the speed  $\mathbf{U}$  which is a divergence free field, we get the following identity:

$$J(\partial_t + \mathbf{U} \cdot \nabla)f = J(\partial_t f + \operatorname{div}(f\mathbf{U})) = J \operatorname{div}_{t,x,y,z} \begin{pmatrix} Jf \\ J\mathcal{A}^{-1}f\mathbf{U} \end{pmatrix},$$

where  $\mathcal{A}^{-1}$  is the inverse matrix of  $\mathcal{A}$  given by (7). Thus, we have:

$$J(\partial_t + \mathbf{U} \cdot \nabla)f = \partial_t(Jf) + \partial_X(fU) + \partial_Y(JfV) + \partial_Z(JfW) \quad (9)$$

Performing a left multiplication of the equation of conservation of the momentum (1) by  $J\Theta$ , where the source term is written as  $\mathbf{F} = -\nabla(\mathbf{g} \cdot M)$  (for a point  $M$  defined as previously (6)), we get:

$$\begin{aligned} 0 &= J\Theta(\partial_t \mathbf{U} + \mathbf{U} \cdot \nabla \mathbf{U} + \operatorname{div}(P/\rho_0) + \nabla(\mathbf{g} \cdot M)) \\ &= J \left( \partial_t(\Theta \mathbf{U}) + (\Theta \mathbf{U} \cdot \nabla) \mathbf{U} + J\Theta \operatorname{div}(P/\rho_0) + J\Theta \nabla(\mathbf{g} \cdot M) \right) \\ &= J \underbrace{\left( \partial_t \begin{pmatrix} U \\ V \\ W \end{pmatrix} + \begin{pmatrix} (\mathbf{U} \cdot \nabla u) \cos \theta + (\mathbf{U} \cdot \nabla w) \sin \theta \\ \mathbf{U} \cdot \nabla v \\ -(\mathbf{U} \cdot \nabla u) \sin \theta + (\mathbf{U} \cdot \nabla w) \cos \theta \end{pmatrix} \right)}_{(a)} \\ &\quad + \underbrace{\begin{pmatrix} J \operatorname{div}(\psi \mathbf{i}) \cos \theta + J \operatorname{div}(\psi \mathbf{k}) \sin \theta \\ J \operatorname{div}(\psi \mathbf{j}) \\ -J \operatorname{div}(\psi \mathbf{i}) \sin \theta + J \operatorname{div}(\psi \mathbf{k}) \cos \theta \end{pmatrix}}_{(b)} \end{aligned}$$

where  $\psi := (p + g(b + Z \cos \theta))/\rho_0$ .

Then, we proceed in two steps:



**Computation of (a).**

We have:

$$\begin{aligned} & J \begin{pmatrix} \partial_t U + (\mathbf{U} \cdot \nabla u) \cos \theta + (\mathbf{U} \cdot \nabla w) \sin \theta \\ \partial_t V + \mathbf{U} \cdot \nabla v \\ \partial_t W + -(\mathbf{U} \cdot \nabla u) \sin \theta + (\mathbf{U} \cdot \nabla w) \cos \theta \end{pmatrix} \\ &= J \begin{pmatrix} \partial_t U + \mathbf{U} \cdot \nabla U - W \mathbf{U} \cdot \nabla \theta \\ \partial_t V + \mathbf{U} \cdot \nabla V \\ \partial_t W + \mathbf{U} \cdot \nabla W + U \mathbf{U} \cdot \nabla \theta \end{pmatrix}. \end{aligned} \quad (10)$$

Applying successively the identity (9) with  $f = U, V, W$ , we get:

$$\partial_t \begin{pmatrix} JU \\ JV \\ JW \end{pmatrix} + \operatorname{div}_{X,Y,Z} \left( \begin{pmatrix} U \\ JV \\ JW \end{pmatrix} \otimes \begin{pmatrix} U \\ JV \\ JW \end{pmatrix} \right) - \mathbf{i} U W \frac{d\theta}{dX} + \mathbf{k} U^2 \frac{d\theta}{dX}. \quad (11)$$

**Computation of (b).**

Applying again Lemma 2.1, we show that the three following identities hold for every scalar function  $\psi$ :

$$\begin{cases} J \operatorname{div}(\psi \mathbf{i}) &= \operatorname{div}_{X,Y,Z} \begin{pmatrix} \psi \cos \theta \\ 0 \\ -J\psi \sin \theta \end{pmatrix}, \\ J \operatorname{div}(\psi \mathbf{j}) &= \partial_Y(J\psi), \\ J \operatorname{div}(\psi \mathbf{k}) &= \operatorname{div}_{X,Y,Z} \begin{pmatrix} \psi \sin \theta \\ 0 \\ J\psi \cos \theta \end{pmatrix}. \end{cases} \quad (12)$$

Moreover, we have:

$$\begin{cases} \partial_X(\psi \cos \theta) \cos \theta + \partial_X(\psi \sin \theta) \sin \theta &= \partial_X \psi, \\ \partial_Z(J\psi \cos \theta) \sin \theta - \partial_Z(J\psi \sin \theta) \cos \theta &= 0, \end{cases} \quad (13)$$

and

$$\begin{cases} \partial_X(\psi \sin \theta) \cos \theta - \partial_X(\psi \cos \theta) \sin \theta &= \psi \partial_X \theta, \\ \partial_Z(J\psi \cos \theta) \cos \theta + \partial_Z(J\psi \sin \theta) \sin \theta &= \partial_Z(\psi J). \end{cases} \quad (14)$$

In view of equalities (12)–(14) applied to the quantity  $\psi := (p + g(b + Z \cos \theta))/\rho_0$ , the term (b) reads as follows:

$$\begin{pmatrix} \partial_X(\psi) \\ \partial_Y(J\psi) \\ \psi \partial_X \theta + \partial_Z(J\psi) \end{pmatrix}. \quad (15)$$

Finally, gathering results (11)–(15), the incompressible Euler equations in variables  $(X, Y, Z)$  are:

$$\begin{cases} \partial_X(\rho_0 U) + \partial_Y(J\rho_0 V) + \partial_Z(J\rho_0 W) &= 0, \\ \partial_t(J\rho_0 U) + \partial_X(\rho_0 U^2) + \partial_Y(J\rho_0 UV) + \partial_Z(J\rho_0 UW) + \partial_X p &= G_1, \\ \partial_t(J\rho_0 V) + \partial_X(\rho_0 UV) + \partial_Y(J\rho_0 V^2) + \partial_Z(J\rho_0 VW) + J\partial_Y(p) &= 0, \\ \partial_t(J\rho_0 W) + \partial_X(\rho_0 UW) + \partial_Y(J\rho_0 VW) + \partial_Z(J\rho_0 W^2) + J\partial_Z(p) &= G_2 \end{cases} \quad (16)$$

where

$$G_1 = \rho_0 U W \frac{d\theta}{dX} - g\rho_0 J \sin \theta, \quad G_2 = -\rho_0 U^2 \frac{d\theta}{dX} - Jg\rho_0 \cos \theta. \quad (17)$$

The no-leak condition, with respect to the new variables, becomes:

$$\begin{pmatrix} U \\ V \\ W \end{pmatrix} \cdot \mathbf{n}_{\text{fm}} = 0 \quad (18)$$

where  $\mathbf{n}_{\text{fm}} = \frac{1}{\cos \theta(X)} \begin{pmatrix} -\sin \theta(X) \\ 0 \\ \cos \theta(X) \end{pmatrix}$ .

The condition at the free surface, in the new variables, reads:

$$p(t, X, Y, Z = h(t, X)) = 0. \quad (19)$$

### 2.1.3 Formal asymptotic analysis

Taking advantage of the ratio of the domain, we perform a formal asymptotic analysis of the equations (16) with respect to a small parameter  $\varepsilon$ . Especially, we are interested on the approximation at main order. In that case, we will get  $J \equiv 1$ .

To this end, let  $\frac{1}{\varepsilon} = \frac{L}{H} = \frac{L}{l}$ , be the ratio aspect of the pipe, assumed very large.  $H$ ,  $L$  and  $l$ , is the characteristic height, length and width (to simplify,  $l = H$  as the pipe, here, is assumed with circular cross section). In the same way, denoting by  $(\overline{V}, \overline{W})$  the characteristic speed following the normal and bi-normal direction,  $\overline{U}$  the characteristic speed following the main pipe axis, we also assume that:

$$\varepsilon = \frac{\overline{V}}{\overline{U}} = \frac{\overline{W}}{\overline{U}}.$$

Let  $T$  and  $P$  be the characteristic time and pressure such that

$$\overline{U} = \frac{L}{T}, \quad P = \rho_0 \overline{U}^2.$$

We set the following non-dimensional variables:

$$\begin{aligned} \tilde{U} &= \frac{U}{\overline{U}}, \quad \tilde{V} = \varepsilon \frac{V}{\overline{U}}, \quad \tilde{W} = \varepsilon \frac{W}{\overline{U}}, \\ \tilde{X} &= \frac{X}{L}, \quad \tilde{Y} = \frac{Y}{H}, \quad \tilde{Z} = \frac{Z}{H}, \quad \tilde{p} = \frac{p}{P}, \quad \tilde{\theta} = \theta. \end{aligned}$$

Under these assumptions, the rescaled Jacobian is:

$$\tilde{J}(\tilde{X}, \tilde{Y}, \tilde{Z}) = 1 - \varepsilon \tilde{Z} \frac{d\tilde{\theta}}{d\tilde{X}}.$$

Then, the non-dimensional system (16) is reduced to:

$$\begin{cases} \partial_{\tilde{X}} \tilde{U} + \partial_{\tilde{Y}}(\tilde{J}\tilde{V}) + \partial_{\tilde{Z}}(\tilde{J}\tilde{W}) = 0 \\ \partial_{\tilde{t}}(\tilde{J}\tilde{U}) + \partial_{\tilde{X}}(\tilde{U}^2) + \partial_{\tilde{Y}}(\tilde{J}\tilde{U}\tilde{V}) + \partial_{\tilde{Z}}(\tilde{J}\tilde{U}\tilde{W}) + \partial_{\tilde{X}}\tilde{p} = G_1, \\ \varepsilon^2 \left( \partial_{\tilde{t}}(\tilde{J}\tilde{V}) + \partial_{\tilde{X}}(\tilde{U}\tilde{V}) + \partial_{\tilde{Y}}(\tilde{J}\tilde{V}^2) + \partial_{\tilde{Z}}(\tilde{J}\tilde{V}\tilde{W}) \right) + \partial_{\tilde{Y}}(\tilde{J}\tilde{p}) = 0, \\ \varepsilon^2 \left( \partial_{\tilde{t}}(\tilde{J}\tilde{W}) + \partial_{\tilde{X}}(\tilde{U}\tilde{W}) + \partial_{\tilde{Y}}(\tilde{J}\tilde{V}\tilde{W}) + \partial_{\tilde{Z}}(\tilde{J}\tilde{W}^2) \right) + \tilde{J}\partial_{\tilde{Z}}(\tilde{p}) = G_2 \end{cases} \quad (20)$$

where

$$G_1 = \varepsilon \tilde{U} \tilde{W} \frac{d\tilde{\theta}}{d\tilde{X}} - \frac{\sin \tilde{\theta}(\tilde{X})}{F_{r,L}^2} - \frac{\tilde{Z}}{F_{r,H}^2} \frac{d}{d\tilde{X}} \cos \tilde{\theta}(\tilde{X}),$$

$$G_2 = -\varepsilon \tilde{U}^2 \frac{d\tilde{\theta}}{d\tilde{X}} - \frac{\cos \tilde{\theta}(\tilde{X})}{F_{r,H}^2} + \varepsilon \frac{d\tilde{\theta}}{d\tilde{X}} \frac{\tilde{Z} \tilde{J} \cos \tilde{\theta}(\tilde{X})}{F_{r,H}^2},$$

$F_{r,\chi} = \frac{\bar{U}}{\sqrt{g\chi}}$  is the Froude number following the axis  $\mathbf{T}$ ,  $\mathbf{B}$  or  $\mathbf{N}$  with  $\chi = L$  or  $\chi = H$ .

Formally, taking  $\varepsilon = 0$  in the previous equation, we get:

$$\partial_{\tilde{X}} \tilde{U} + \partial_{\tilde{Y}} \tilde{V} + \partial_{\tilde{Z}} \tilde{W} = 0, \quad (21)$$

$$\partial_{\tilde{t}} \tilde{U} + \partial_{\tilde{X}} (\tilde{U}^2) + \partial_{\tilde{Y}} (\tilde{U} \tilde{V}) + \partial_{\tilde{Z}} (\tilde{U} \tilde{W}) + \partial_{\tilde{X}} \tilde{p} = -\frac{\sin \tilde{\theta}(\tilde{X})}{F_{r,L}^2} - \frac{\tilde{Z}}{F_{r,H}^2} \frac{d}{d\tilde{X}} \cos \tilde{\theta}(\tilde{X}), \quad (22)$$

$$\partial_{\tilde{Y}} \tilde{p} = 0, \quad (23)$$

$$\partial_{\tilde{Z}} \tilde{p} = -\frac{\cos \tilde{\theta}(\tilde{X})}{F_{r,H}^2}. \quad (24)$$

$\triangle$  Henceforth, we note  $(x, y, z)$  the dimensioned variables  $(X, Y, Z)$  and  $(u, v, w)$  dimensioned speed  $(U, V, W)$ . In particular, we set:

$$x = L\tilde{X}, \quad y = H\tilde{Y}, \quad z = H\tilde{Z}$$

et

$$u = \bar{U}\tilde{U}, \quad v = \varepsilon \bar{U}\tilde{V}, \quad w = \varepsilon \bar{U}\tilde{W} \quad \text{et} \quad p = \rho_0 \bar{U}^2 \tilde{p}.$$

Then, multiplying the equation (21) by  $\rho_0 \frac{\bar{U}}{L}$ , (22) by  $\rho_0 \frac{\bar{U}}{T}$ , (23) by  $\rho_0 \frac{\bar{U}^2}{H}$ , (24) by  $\rho_0 \frac{\bar{U}^2}{H}$ , we obtain the hydrostatic approximation of the Euler equations (16):

$$\partial_x(\rho_0 u) + \partial_y(\rho_0 v) + \partial_z(\rho_0 w) = 0, \quad (25)$$

$$\partial_t(\rho_0 u) + \partial_x(\rho_0 u^2) + \partial_y(\rho_0 uv) + \partial_z(\rho_0 uw) + \partial_x p = -g\rho_0 \sin \theta(x) - g\rho_0 z \frac{d}{dx} \cos \theta(x), \quad (26)$$

$$\partial_y p = 0, \quad (27)$$

$$\partial_z p = -g \cos \theta(x). \quad (28)$$

#### 2.1.4 Vertical averaging of the hydrostatic approximation of Euler equations

Let  $A(t, x)$  and  $Q(t, x)$  be the conservative variables of wet area and discharge defined by the following relations:

$$A(t, x) = \int_{\Omega(t,x)} dydz \quad (29)$$

and

$$Q(t, x) = A(t, x) \bar{u}(t, x) \quad (30)$$

where

$$\bar{u}(t, x) = \frac{1}{A(t, x)} \int_{\Omega(t,x)} u(t, x, y, z) dydz \quad (31)$$

is the mean speed of the fluid over the section  $\Omega(t, x)$ .

**Kinematic boundary condition and the equation of the conservation of the mass.**

Let  $\mathbf{V}$  be the vector field  $\begin{pmatrix} v \\ w \end{pmatrix}$ . Integrating the equation of conservation of the mass (3) on the set:

$$\bar{\Omega}(x) = \{(y, z); \alpha(x, z) \leq y \leq \beta(x, z), -R(x) \leq z \leq \infty\},$$

we get the following equation:

$$\int_{\bar{\Omega}(x)} \partial_t(\rho_0\phi) + \partial_x(\rho_0\phi u) + \text{div}_{y,z}(\rho_0\phi\mathbf{V}) \, dydz = \rho_0 \left( \partial_t A + \partial_x Q + \int_{\partial\bar{\Omega}_{\text{fm}}(x)} (u\partial_x M - \mathbf{V}) \cdot \mathbf{n} \, ds \right) \quad (32)$$

where  $A$  and  $Q$  are given by (29) and (30).

According to the definition (2) of  $\phi$ , the boundary  $\bar{\Omega}_{\text{fm}}$  coincides with  $\gamma_{\text{fm}}$ . Using, the no-leak condition (18), Equation (32) is equivalent to

$$\partial_t(\rho_0 A) + \partial_x(\rho_0 Q) = 0 \quad (33)$$

Now, if integrate the equation (3) on  $\Omega(t, x)$ , we get:

$$\rho_0 \left( \int_{-R(x)}^{h(t,x)} \partial_t \int_{\alpha(x,z)}^{\beta(x,z)} \, dydz + \partial_x Q + \int_{\partial\Omega(t,x)} (\mathbf{V} - u\partial_x M) \cdot \mathbf{n} \, ds \right) = 0 \quad (34)$$

where

$$\int_{-R(x)}^{h(t,x)} \partial_t \int_{\alpha(x,z)}^{\beta(x,z)} \, dydz = \partial_t A - \sigma(x, h(t, x))\partial_t h$$

with  $\sigma(x, h(t, x))$  the width at the free surface elevation as displayed on FIG. 3.

In view of the no-leak condition (18), the integral on the wet boundary is zero, i.e. :

$$\int_{\gamma_{\text{fm}}(t,x)} (\mathbf{V} - u\partial_x M) \cdot \mathbf{n}_{\text{fm}} \, ds = 0.$$

Then, we deduce:

$$\partial_t(\rho_0 A) + \partial_x(\rho_0 Q) + \rho_0 \int_{\gamma_{\text{sl}}(t,x)} (\partial_t M + u\partial_x M - \mathbf{V}) \cdot \mathbf{n}_{\text{sl}} \, ds = 0. \quad (35)$$

By comparing equations (33) and (35), we finally get the kinematic condition at the free surface:

$$\int_{\gamma_{\text{sl}}(t,x)} (\partial_t M + u\partial_x M - \mathbf{V}) \cdot \mathbf{n}_{\text{sl}} \, ds = 0. \quad (36)$$

and we deduced from (35) the following equation of the conservation of the mass:

$$\partial_t(\rho_0 A) + \partial_x(\rho_0 Q) = 0. \quad (37)$$

**Equation of the conservation of the momentum.**

In order to get the equation of the conservation of the momentum of the free surface model, we integrate each terms of (26) along sections  $\Omega(t, x)$  as follows:

$$\int_{\Omega} \underbrace{\partial_t(\rho_0 u)}_{a_1} + \underbrace{\partial_x(\rho_0 u^2)}_{a_2} + \underbrace{\text{div}_{y,z}(\rho_0 u \mathbf{V})}_{a_3} + \underbrace{\partial_x p}_{a_4} dydz = \int_{\Omega} \underbrace{-\rho_0 g z \frac{d}{dx} \cos \theta}_{a_5} - \underbrace{\rho_0 g \sin \theta}_{a_6} dydz$$

where  $\mathbf{V} = \begin{pmatrix} v \\ w \end{pmatrix}$ .

Assuming that

$$\overline{uv} \approx \overline{u} \overline{v}, \quad \overline{u^2} \approx \overline{u}^2,$$

we successively get:

**Computation of the term  $\int_{\Omega(t,x)} a_1 dydz$ .**

The pipe being non-deformable, only the integral at the free surface is relevant:

$$\int_{\gamma_{\text{fm}}(t,x)} \rho_0 u \partial_t M \cdot \mathbf{n}_{\text{sl}} ds = 0.$$

So, we get:

$$\int_{\Omega(t,x)} \partial_t(\rho_0 u) dydz = \partial_t \int_{\Omega(t,x)} \rho_0 u dydz - \int_{\gamma_{\text{sl}}(t,x)} \rho_0 u \partial_t M \cdot \mathbf{n}_{\text{sl}} ds.$$

**Computation of the term  $\int_{\Omega(t,x)} a_2 dydz$ .**

$$\begin{aligned} \int_{\Omega(t,x)} \partial_x(\rho_0 u^2) dydz &= \partial_x \int_{\Omega(t,x)} \rho_0 u^2 dydz - \int_{\gamma_{\text{sl}}(t,x)} \rho_0 u^2 \partial_x M \cdot \mathbf{n}_{\text{sl}} ds \\ &\quad - \int_{\gamma_{\text{fm}}(t,x)} \rho_0 u^2 \partial_x M \cdot \mathbf{n}_{\text{fm}} ds. \end{aligned}$$

**Computation of the term  $\int_{\Omega(t,x)} a_3 dydz$ .**

$$\begin{aligned} \int_{\Omega(t,x)} \text{div}_{y,z}(\rho_0 u \mathbf{V}) dydz &= \int_{\gamma_{\text{sl}}(t,X)} \rho_0 u \mathbf{V} \cdot \mathbf{n}_{\text{sl}} ds \\ &\quad + \int_{\gamma_{\text{fm}}(t,X)} \rho_0 u \mathbf{V} \cdot \mathbf{n}_{\text{fm}} ds. \end{aligned}$$

Summing the result of the previous step  $a_1 + a_2 + a_3$ , we get:

$$\int_{\Omega(t,x)} a_1 + a_2 + a_3 dydz = \partial_t(\rho_0 Q) + \partial_x \left( \rho_0 \frac{Q^2}{A} \right) \quad (38)$$

where  $A$  and  $Q$  are given by (29) and (30).

**Computation of the term  $\int_{\Omega(t,x)} a_4 dydz$ .**

Let us first note that the pressure is hydrostatic:

$$p(t, x, z) = \rho_0 g (h(t, x) - z) \cos \theta(x) \quad (39)$$

since from the equation (27), the pressure does not depend on the variable  $y$ . Equation (39) follows immediately by integrating the equation (28) from  $z$  to  $h(t, x)$ .

For  $\psi = p$ ,  $p$  given by the relation (39),  $(t, x)$  fixed, we have:

$$\begin{aligned} \int_{\Omega(t,x)} \partial_x \psi dydz &= \int_{-R(x)}^{h(t,x)} \int_{\alpha(x,z)}^{\beta(x,z)} \partial_x \psi dydz \\ &= \int_{-R(x)}^{h(t,x)} \partial_x \int_{\alpha(x,z)}^{\beta(x,z)} \psi dydz \\ &\quad - \left( \int_{-R(x)}^{h(t,x)} \partial_x \beta(x, z) \psi|_{y=\beta(x,z)} - \partial_x \alpha(x, z) \psi|_{y=\alpha(x,z)} dz \right) \\ &= \partial_x \int_{\Omega(t,x)} \psi dydz \\ &\quad - \left( \int_{-R(x)}^{h(t,x)} \partial_x \beta(x, z) \psi|_{y=\beta(x,z)} - \partial_x \alpha(x, z) \psi|_{y=\alpha(x,z)} dz \right) \\ &\quad - \partial_x h(t, x) \int_{\alpha|z=h(t,x)}^{\beta|z=h(t,x)} \psi|_{z=h(t,x)} dy \\ &\quad - \partial_x R(x) \int_{\alpha|z=h(t,x)}^{\beta|z=h(t,x)} \psi|_{z=-R(x)} dy. \end{aligned}$$

Finally, we have:

$$\begin{aligned} \int_{\Omega(t,x)} \partial_x p dydz &= \partial_x (\rho_0 g I_1(x, A(t, x)) \cos \theta(x)) - g \rho_0 I_2(x, A) \cos \theta(x) \\ &\quad - \rho_0 g (h(t, x) + R(x)) \cos \theta(x) \sigma(x, -R(x)) \frac{d R(x)}{dx} \end{aligned} \quad (40)$$

where  $I_1$  is the hydrostatic pressure:

$$I_1(x, A) = \int_{-R(x)}^{h(A)} (h(A) - z) \sigma(x, z) dz. \quad (41)$$

When the sections of the pipe are rectangular and uniform, we have  $I_1(x, A) := I_1(A)$  and  $\sigma(x, z) = \sigma = cte$ . Moreover, we have  $A = (h + R)\sigma = H\sigma$  and the pressure reads

$$\frac{g I_1(A)}{\sigma} = \frac{g I_1(A)}{\sigma} = g \frac{H^2}{2}$$

as for the usual formulation of the mono-dimensional Saint-Venant equations.

We can also regard  $I_1/A = \bar{y}$  as the distance separating the free surface to the center of the mass of the wet section (see FIG. 5).

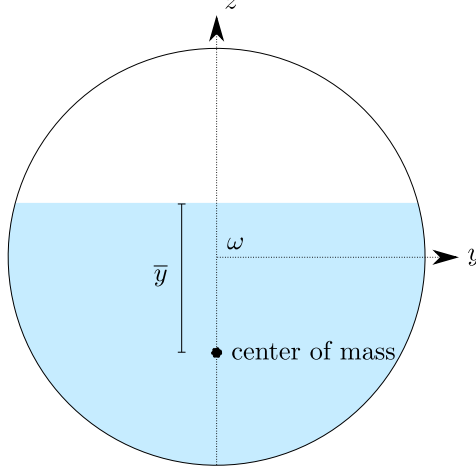


Figure 5:  $\bar{y}$

The term  $I_2$  is the pressure source term:

$$I_2(x, A) = \int_{-R(x)}^{h(A)} (h(A) - z) \partial_x \sigma(x, z) dz. \quad (42)$$

It takes into account of the section variation via the term  $\partial_x \sigma(x, \cdot)$ .

The term  $\rho_0 g (h(t, x) + R(x)) \cos \theta(x) \sigma(x, -R(x)) \frac{dR(x)}{dx}$  is also a term which takes into account the variations of the section. The contribution of this term is non zero when:

$$\sigma(x, z = -R(x)) \neq 0, \text{ and} \quad (43)$$

$$\partial_x R(x) \neq 0. \quad (44)$$

As we only deal with pipe with circular section, therefore, the result of the computation is simply

$$\int_{\Omega(t, x)} a_4 dydz = \int_{\Omega(t, x)} \partial_x p dydz = \partial_x (\rho_0 g I_1(x, A(t, x)) \cos \theta(x)) - g \rho_0 I_2(x, A) \cos \theta(x) \quad (45)$$

in the rest of the paper.

**Computation of the term  $\int_{\Omega(t, x)} a_5 dydz$ .**

We have:

$$\int_{\Omega(t, x)} \rho_0 g z \frac{d}{dx} \cos \theta dydz = \rho_0 g A \bar{z} \frac{d}{dx} \cos \theta \quad (46)$$

where  $\bar{z}$  is the  $z$ -coordinate of the center of the mass. As  $\frac{I_1(x, A(t, x))}{A(t, x)} := \bar{y}$  (see step “Computation of the term  $a_3$ .”), the quantity  $\bar{z}$  is related to  $I_1$  by the formula:

$$\bar{z} = h(t, x) - \frac{I_1(x, A(t, x))}{A(t, x)}. \quad (47)$$

**Computation of the term**  $\int_{\Omega(t,x)} a_6 dydz$ .

We have:

$$\int_{\Omega(t,x)} \rho_0 g \sin \theta dydz = \rho_0 g A \sin \theta. \quad (48)$$

Then, gathering results (38)–(48), we get the equation of the conservation of the momentum. Finally, the new shallow water equations for free surface flows in closed water pipe with variable slope and section are:

$$\begin{cases} \partial_t(\rho_0 A) + \partial_x(\rho_0 Q) & = 0 \\ \partial_t(\rho_0 Q) + \partial_x \left( \rho_0 \frac{Q^2}{A} + g \rho_0 I_1 \cos \theta \right) & = -g \rho_0 A \sin \theta + g \rho_0 I_2 \cos \theta - g \rho_0 A \bar{z} \frac{d}{dx} \cos \theta \end{cases} \quad (49)$$

This model is called **FS**-model.

In System (49), we may add a friction term  $-\rho_0 g S_f \mathbf{T}$  to take into account dissipation of energy. We have chosen this term  $S_f$  as the one given by the Manning-Strickler law (see e.g. [25]):

$$S_f(A, U) = K(A) U |U|.$$

The term  $K(A)$  is defined by:  $K(A) = \frac{1}{K_s^2 R_h(A)^{4/3}}$ ,  $K_s > 0$  is the Strickler coefficient of roughness depending on the material,  $R_h(A) = A/P_m$  is the hydraulic radius and  $P_m$  is the perimeter of the wet surface area (length of the part of the channel's section in contact with the water).

### 3 Formal derivation of the pressurized model

When the section is completely filled, we have to define a strategy to derive a suitable pressurized model in order to

- take into the compressibility of the water,
- modelise the water hammer (issuing from the overpressure and depression waves)

keeping in mind that we want to construct a mixed model which allows

- deal with free surface flows,
- deal with pressurized flows and
- to cope the transition between a free surface state and a pressurized (i.e. compressible) state transition phenomenon.

There exists a large literature on this topic, for instance

- the Preissmann slot artefact (see, for instance, [13]) but this technique has the drawback to do not take into account the sub-atmospheric flows,
- the Allievi equations (see, for instance, [2]) but this equation are not well suited for a coupling with the derived **FS**-model.



Then, as a starting point, we consider the 3D isentropic compressible Euler equations:

$$\partial_t \rho + \operatorname{div}(\rho \mathbf{U}) = 0, \quad (50)$$

$$\partial_t(\rho \mathbf{U}) + \operatorname{div}(\rho \mathbf{U} \otimes \mathbf{U}) + \nabla p(\rho) = \rho \mathbf{F}, \quad (51)$$

where  $\mathbf{U}(t, x, y, z)$  is the fluid velocity of components  $(u, v, w)$  and  $\rho(t, x, y, z)$  is the volumetric mass of the fluid. The gravity source term is  $\mathbf{F} = -g \begin{pmatrix} -\sin \theta(x) \\ 0 \\ \cos \theta(x) \end{pmatrix}$  where  $\theta(x)$  is the angle  $(\mathbf{i}, \mathbf{T})$

(see FIG. 1 or FIG. 2). As defined previously,  $\mathbf{T}$  is the tangential vector at the point  $\omega \in \mathcal{C}$  (see Section 2 for notations) where the “pressurized” plane curve is defined below.

The system is closed by the linearised pressure law (see [25, 27]):

$$p = p_a + \frac{\rho - \rho_0}{\beta_0 \rho_0} \quad (52)$$

which have the advantage to show clearly overpressure state and depression state. Indeed,  $\rho_0$  being the volumetric mass of water, the overpressure state corresponds to  $\rho > \rho_0$  while  $\rho < \rho_0$  represents a depression state. The case  $\rho = \rho_0$  is a critic one and a bifurcation point as we will see on FIG. 8.

In the expression of the pressure (52), the sound speed is defined as  $c^2 = \frac{1}{\rho_0 \beta_0}$  where  $\beta_0$  is the compressibility coefficient of water. In practice,  $\beta_0$  is  $5.0 \cdot 10^{-10} \text{ m}^2/\text{N}$  and thus  $c \approx 1400 \text{ m}^2/\text{s}$ .  $p_a$  is some function and without loss of generality, it may be set to zero. Let us note that  $p_a$  plays an important role in the construction of the mixed model **PFS** (as we will see in Section 4).

At the wet boundary, we assume a no-leak condition and we assume that the pipe is non-deformable. Thus we have the following crucial property:

$$\left\{ \begin{array}{l} \text{If } (x, 0, b_{\text{sl}}(x)) \text{ is the parametric representation of the plane curve } \mathcal{C}_{\text{sl}} \text{ for} \\ \text{free surface flows, then we define continuously the parametric} \\ \text{representation } (x, 0, b(x)) \text{ of the plane curve } \mathcal{C}_{\text{ch}} \text{ for pressurized flows.} \end{array} \right. \quad (53)$$

As a consequence, the section  $\Omega(x)$  (in pressurized state) orthogonal to the plane curve  $\mathcal{C}_{\text{ch}}$  is a continuous extension of the free surface one. Henceforth, we note this curve  $\mathcal{C}$ . At a given curvilinear abscissa, at the point  $\omega \in \mathcal{C}$ , we define pressurized section as follows:

$$\Omega(X) = \{(Y, Z) \in \mathbb{R}^2; Z \in [-R(X), R(X)], Y \in [\alpha(X, Z), \beta(X, Z)]\}.$$

**Remark 3.1.** *As the section is non-deformable,  $\Omega(x)$  depends only on the spatial variable  $x$ .*

Following the previous section, we proceed to the change of variables, namely we consider the application  $\mathcal{T} : (x, y, z) \rightarrow (X, Y, Z)$ .

### 3.1 Compressible Euler equations in curvilinear coordinates

Let  $(U, V, W)^t$  be the component of the fluid velocity in variables  $(X, Y, Z)$  given by

$$(U, V, W)^t = \Theta(u, v, w)^t$$

where  $\Theta$  is the rotation matrix generated around the axis  $\mathbf{j}$ :

$$\Theta = \begin{pmatrix} \cos \theta & 0 & \sin \theta \\ 0 & 1 & 0 \\ -\sin \theta & 0 & \cos \theta \end{pmatrix}.$$

### 3.1.1 Transformation of the equation of conservation of the mass

Writing the equation of conservation of the mass (50) under a divergence form:

$$\operatorname{div}_{t,x,y,z} \begin{pmatrix} \rho \\ \rho \mathbf{U} \end{pmatrix} = 0$$

and applying Lemma 2.1, we obviously get the equations in variables  $(X, Y, Z)$ :

$$\partial_t(J\rho) + \partial_X(\rho U) + \partial_Y(J\rho V) + \partial_Z(J\rho W) = 0 \quad (54)$$

where  $J$  is the determinant of the matrix  $\mathcal{A}^{-1}$  (as already defined by (29)).

**Remark 3.2.** *Let us also remark that, from (H), we have  $J(X, Z) > 0$ .*

### 3.1.2 Transformation of the equation of conservation of the momentum

Following Section 2.1, namely:

- using Lemma 2.1,
- multiplying the equation of conservation of the momentum (51) on the left by the matrix  $J\Theta$ ,

we get the equation for  $U$  in the variables  $(X, Y, Z)$ :

$$\partial_t(\rho JU) + \partial_X(\rho U^2) + \partial_Y(\rho JUV^2) + \partial_Z(\rho JUW) + \partial_X p = -\rho Jg \sin \theta(X) + \rho UW \frac{d}{dX} \cos \theta(X). \quad (55)$$

Other equations are unused since we want to derive a unidirectional model. Let us also note, in the derivation of the **FS**-model, all these equations were relevant to get the expression of the pressure.

### 3.1.3 Formal asymptotic analysis

As previously made in Section 2.1.3, we write the non-dimensioned version of equation equations (54)-(55) with respect to the small parameter  $\varepsilon$  already introduced. In particular, we seek for an approximation at main order with respect to the asymptotic expansion with respect to  $\varepsilon$ . As pointed out before, we will get  $J \approx 1$  where  $J$  is the determinant of the Jacobian matrix of the change of variables.

Let us recall that

$$\frac{1}{\varepsilon} = \frac{L}{H} = \frac{L}{l} = \frac{\bar{U}}{\bar{V}} = \frac{\bar{U}}{\bar{W}}$$

is assumed large enough where  $H$ ,  $L$  and  $l$  is a characteristic length of the height, the length, and the width (where  $l = H$  since we deal with only circular cross section pipe) and  $\bar{U}$ ,  $\bar{V}$  and  $\bar{W}$ , is a characteristic speed following the main axis, the normal direction and the bi-normal one. Then, let  $T$  be a characteristic time such that

$$\bar{U} = \frac{L}{T}.$$

We set the non-dimensioned variables:

$$\tilde{U} = \frac{U}{\bar{U}}, \quad \tilde{V} = \varepsilon \frac{V}{\bar{V}}, \quad \tilde{W} = \varepsilon \frac{W}{\bar{W}},$$

$$\tilde{X} = \frac{X}{L}, \tilde{Y} = \frac{Y}{H}, \tilde{Z} = \frac{Z}{H}, \tilde{\rho} = \frac{\rho}{\rho_0}, \tilde{\theta} = \theta.$$

With these notations, the non-dimensioned equations (54)-(55) are:

$$\left\{ \begin{array}{l} \partial_{\tilde{t}}(\tilde{\rho}\tilde{J}) + \partial_{\tilde{X}}(\tilde{\rho}\tilde{U}) + \partial_{\tilde{Y}}(\tilde{\rho}\tilde{J}\tilde{V}) + \partial_{\tilde{Z}}(\tilde{\rho}\tilde{J}\tilde{W}) = 0 \\ \partial_{\tilde{t}}(\tilde{\rho}\tilde{J}\tilde{U}) + \partial_{\tilde{X}}(\tilde{\rho}\tilde{U}^2) + \partial_{\tilde{Y}}(\tilde{\rho}\tilde{J}\tilde{U}\tilde{V}) + \partial_{\tilde{Z}}(\tilde{\rho}\tilde{J}\tilde{U}\tilde{W}) + \frac{1}{M_a^2}\partial_{\tilde{X}}\tilde{\rho} = \epsilon\tilde{\rho}\tilde{U}\tilde{W}\tilde{\rho}(\tilde{X}) \\ -\tilde{\rho}\frac{\sin\tilde{\theta}(\tilde{X})}{F_{r,L}^2} \\ -\frac{\tilde{Z}}{F_{r,H}^2}\frac{d}{d\tilde{X}}\cos\tilde{\theta}(\tilde{X}) \end{array} \right. \quad (56)$$

where  $F_{r,M} = \frac{\bar{U}}{\sqrt{gM}}$  is the Froude number and  $M_a = \frac{\bar{U}}{c}$  is the Mach number.

Formally, taking  $\epsilon = 0$ , the previous equations (56) reads:

$$\partial_{\tilde{t}}(\tilde{\rho}) + \partial_{\tilde{X}}(\tilde{\rho}\tilde{U}) + \partial_{\tilde{Y}}(\tilde{\rho}\tilde{V}) + \partial_{\tilde{Z}}(\tilde{\rho}\tilde{W}) = 0, \quad (57)$$

$$\partial_{\tilde{t}}(\tilde{\rho}\tilde{U}) + \partial_{\tilde{X}}(\tilde{\rho}\tilde{U}^2) + \partial_{\tilde{Y}}(\tilde{\rho}\tilde{U}\tilde{V}) + \partial_{\tilde{Z}}(\tilde{\rho}\tilde{U}\tilde{W}) + \frac{1}{M_a^2}\partial_{\tilde{X}}\tilde{\rho} = -\tilde{\rho}\frac{\sin\tilde{\theta}(\tilde{X})}{F_{r,L}^2} \quad (58)$$

$$-\frac{\tilde{Z}}{F_{r,H}^2}\frac{d}{d\tilde{X}}\cos\tilde{\theta}(\tilde{X}) \quad (59)$$

△ Henceforth, we note  $(x, y, z)$  the dimensioned variables  $(X, Y, Z)$ , and  $(u, v, w)$  dimensioned speed  $(U, V, W)$ . Setting:

$$x = L\tilde{X}, y = H\tilde{Y}, z = H\tilde{Z},$$

$$u = \bar{U}\tilde{U}, v = \epsilon\bar{U}\tilde{V}, w = \epsilon\bar{U}\tilde{W},$$

$\rho = \tilde{\rho}$ , we finally get the following equations written in the curvilinear variables:

$$\partial_t\rho + \partial_x(\rho u) + \partial_y(\rho v) + \partial_z(\rho w) = 0, \quad (60)$$

$$\partial_t(\rho u) + \partial_x(\rho u^2) + \partial_y(\rho uv) + \partial_z(\rho uw) + \partial_x p = -g\rho\sin\theta(x) - g\rho z\frac{d}{dx}\cos\theta(x). \quad (61)$$

where  $p$  is the linearised pressure law given by (52).

**Remark 3.3.** *The previous equations are the hydrostatic approximation of the Euler compressible equations where we have neglected the second and third momentum equation.*

### 3.1.4 Vertical averaging of the hydrostatic approximation of Euler equations

The physical section of water,  $S(x)$ , and the discharge,  $Q(t, x)$ , are defined by:

$$S(x) = \int_{\Omega(t,x)} dydz, \quad (62)$$

and

$$Q(t, x) = S(x)\bar{u}(t, x) \quad (63)$$

where  $\bar{u}$  is the mean speed over the section  $\Omega(x)$ :

$$\bar{u}(t, x) = \frac{1}{S(t, x)} \int_{\Omega(t, x)} u(t, x, y, z) dydz. \quad (64)$$

Let  $\mathbf{m} \in \partial\Omega(x)$ , we denote  $\mathbf{n} = \frac{\mathbf{m}}{|\mathbf{m}|}$  the outward unit normal vector to the boundary  $\partial\Omega(x)$  at the point  $\mathbf{m}$  in the  $\Omega$ -plane and  $\mathbf{m}$  stands for the vector  $\omega m$  (c.f. FIG. 3).

Following the section-averaging method performed to obtain the **FS**-model, we integrate System (60)-(61) over the cross-section  $\Omega$ . Noting the averaged values over  $\Omega$  by the overlined letters (except for  $\bar{z}$ ), and using the approximations  $\overline{\rho u} \approx \bar{\rho} \bar{u}$ ,  $\overline{\rho u^2} \approx \bar{\rho} \bar{u}^2$ , we get the following shallow water like equations:

$$\partial_t(\bar{\rho}S) + \partial_x(\bar{\rho}S\bar{u}) = \int_{\partial\Omega(x)} \rho (u\partial_x\mathbf{m} - \mathbf{V}) \cdot \mathbf{n} ds \quad (65)$$

$$\begin{aligned} \partial_t(\bar{\rho}S\bar{u}) + \partial_x(\bar{\rho}S\bar{u}^2 + c^2\bar{\rho}S) &= -g\bar{\rho}S \sin \theta + c^2\bar{\rho}\frac{dS}{dx} - g\bar{\rho}S\bar{z}\frac{d}{dx} \cos \theta, \\ &+ \int_{\partial\Omega(x)} \rho u (u\partial_x\mathbf{m} - \mathbf{V}) \cdot \mathbf{n} ds \end{aligned} \quad (66)$$

where  $\mathbf{V} = (v, w)^t$  is the velocity field in the  $(\mathbf{N}, \mathbf{B})$ -plane. The integral terms appearing in (65) and (66) vanish, as the pipe is infinitely rigid, i.e.  $\Omega = \Omega(x)$  (see [7] for more details about deformable pipes). It follows the non-penetration condition (see FIG. 6):

$$\begin{pmatrix} u \\ v \\ w \end{pmatrix} \cdot \mathbf{n}_{\mathbf{wb}} = 0.$$

Omitting the overlined letters (except for  $\bar{z}$ ), setting the conservative variables

$$A = \frac{\rho}{\rho_0} S \quad \text{the FS equivalent wet area} \quad (67)$$

$$Q = AU \quad \text{the FS equivalent discharge.} \quad (68)$$

and dividing Equations (65)-(66) by  $\rho_0$ , adding on each side of the equation (66) the quantity  $-c^2\frac{dS}{dx}$ , we get the pressurized model, called **P**-model:

$$\begin{cases} \partial_t A + \partial_x Q &= 0, \\ \partial_t Q + \partial_x \left( \frac{Q^2}{A} + c^2(A - S) \right) &= -gA \sin \theta + c^2 \left( \frac{A}{S} - 1 \right) \frac{dS}{dx} - gA\bar{z}\frac{d}{dx} \cos \theta. \end{cases} \quad (69)$$

**Remark 3.4.** *In term of area, a depression occurs when  $A < S$  (i.e.  $\rho < \rho_0$ ) and an overpressure if  $A > S$  (i.e.  $\rho > \rho_0$ ).*

As introduced previously for the **FS**-model, we may introduce the friction term  $-\rho g S_f \mathbf{T}$  given by the Manning-Strickler law (see e.g. [25]):

$$S_f(S, U) = K(S)U|U|$$

where  $K(S)$  is defined by:  $K(S) = \frac{1}{K_s^2 R_h(S)^{4/3}}$ ,  $K_s > 0$  is the Strickler coefficient of roughness depending on the material and  $R_h(S) = S/P_m$  is the hydraulic radius where  $P_m$  is the perimeter of the wet surface area (length of the part of the channel's section in contact with the water, equal to  $2\pi R$  in the case of circular pipe).

## 4 The PFS-model

In the previous sections, we have proposed two models, one for the free surface flows and the other for pressurized (compressible) flows which are very close to each other. In this section, we are motivated to connect “continuously” these two models through the transition points. Let us recall these two models.

### The FS-model.

$$\left\{ \begin{array}{l} \partial_t A_{sl} + \partial_x Q_{sl} = 0, \\ \partial_t Q_{sl} + \partial_x \left( \frac{Q_{sl}^2}{A_{sl}} + p_{sl}(x, A_{sl}) \right) = -gA_{sl} \frac{dZ}{dx} + Pr_{sl}(x, A_{sl}) - gA_{sl} \bar{z} \frac{d}{dx} \cos \theta \\ -gK(x, A_{sl}) \frac{Q_{sl}|Q_{sl}|}{A_{sl}} \end{array} \right. \quad (70)$$

where

$$\begin{aligned} p_{sl}(x, A_{sl}) &= gI_1(x, A_{sl}) \cos \theta, \\ Pr_{sl}(x, A_{sl}) &= gI_2(x, A_{sl}) \cos \theta, \\ K(x, A_{sl}) &= \frac{1}{K_s^2 R_h (A_{sl})^{4/3}}, \end{aligned}$$

with  $I_1$  and  $I_2$  are defined by (41) and (42).

### The P-model.

$$\left\{ \begin{array}{l} \partial_t A_{ch} + \partial_x Q_{ch} = 0, \\ \partial_t Q_{ch} + \partial_x \left( \frac{Q_{ch}^2}{A_{ch}} + p_{ch}(x, A_{ch}) \right) = -gA_{ch} \frac{dZ}{dx} + Pr_{ch}(x, A_{ch}) - gA_{ch} \bar{z} \frac{d}{dx} \cos \theta \\ -gK(x, S) \frac{Q_{ch}|Q_{ch}|}{A_{ch}} \end{array} \right. \quad (71)$$

where

$$\begin{aligned} p_{ch}(x, A_{ch}) &= c^2(A_{ch} - S), \\ Pr_{ch}(x, A_{ch}) &= c^2 \left( \frac{A_{ch}}{S} - 1 \right) \frac{dS}{dx}, \\ K(x, S) &= \frac{1}{K_s^2 R_h (S)^{4/3}}. \end{aligned}$$

We remark that the term  $\frac{dZ}{dx}$ ,  $\bar{z} \frac{d}{dx} \cos \theta$  and the friction are similar in both models (where we set  $Z(x) = b(x)$ ).

**Remark 4.1.** *The plane curve with parametrization  $(x, 0, b(x))$  is chosen as the main pipe axis in the axis-symmetric case. Actually this choice is the more convenient for pressurised flows while the bottom line is adapted to free surface flows. Thus, we must assume small variations of the section ( $S'$  small) or equivalently small angle  $\varphi$  as displayed on FIG. 6 in order to keep a continuous connection of the term  $Z(x)$  from one to other type of flows.*

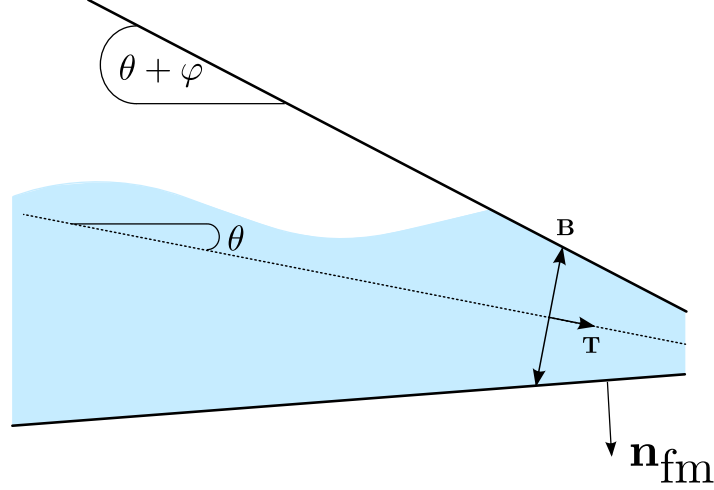


Figure 6: Some restriction concerning the geometric domain:  $\varphi < \theta$ .

The real difference between these two models is mainly due to the pressure law: one is of “acoustic” type while the other is hydrostatic. We are then motivated by defining a suitable couple of “mixed” variables in order to connect “continuously” these two models through the transition points. But, necessarily, the gradient of flux of the new system will be discontinuous at transition points, due to the difference of sound speed (as we will see below).

To this end, we introduce a state indicator  $E$  (see FIG. 8) such that:

$$E = \begin{cases} 1 & \text{if the state is pressurised: } (\rho \neq \rho_0), \\ 0 & \text{if the state is free surface: } (\rho = \rho_0). \end{cases} \quad (72)$$

Next, we define the *physical wet area*  $\mathbf{S}$  by:

$$\mathbf{S} = \mathbf{S}(A, E) = \begin{cases} S & \text{if } E = 1, \\ A & \text{if } E = 0. \end{cases} \quad (73)$$

We introduce then a couple of variables, called “mixed variables”:

$$A = \frac{\rho}{\rho_0} \mathbf{S}, \quad (74)$$

$$Q = Au \quad (75)$$

which satisfies:

- if the flow is free surface,  $\rho = \rho_0$ ,  $E = 0$  and consequently  $\mathbf{S} = A$ , and
- if the flow is pressurized,  $\rho \neq \rho_0$ ,  $E = 1$  and consequently  $\mathbf{S} = S$ .

To construct a “mixed” pressure law (c.f. FIG. 8), we set:

$$p(x, A, E) = c^2(A - \mathbf{S}) + gI_1(x, \mathbf{S}) \cos \theta \quad (76)$$

where the term  $I_1$  is given by:

$$I_1(x, \mathbf{S}) = \int_{-R(x)}^{\mathcal{H}(\mathbf{S})} (\mathcal{H}(\mathbf{S}) - z) \sigma(x, z) dz \quad (77)$$

with  $\mathcal{H}$  representing the  $z$ -coordinate of the water level:

$$\mathcal{H} = \mathcal{H}(\mathbf{S}) = \begin{cases} h(A) & \text{si } E = 0, \\ R(x) & \text{si } E = 1. \end{cases} \quad (78)$$

Thus, the constructed pressure is continuous throughout the transition points:

$$\lim_{\substack{A \rightarrow S \\ A < S}} p(x, A, E) = \lim_{\substack{A \rightarrow S \\ A > S}} p(x, A, E)$$

but its gradient is discontinuous (c.f. FIG. 7):

$$\frac{\partial p}{\partial A}(x, A, 0) = \sqrt{\frac{gA}{T}} \neq c^2 = \frac{\partial p}{\partial A}(x, A, 1).$$

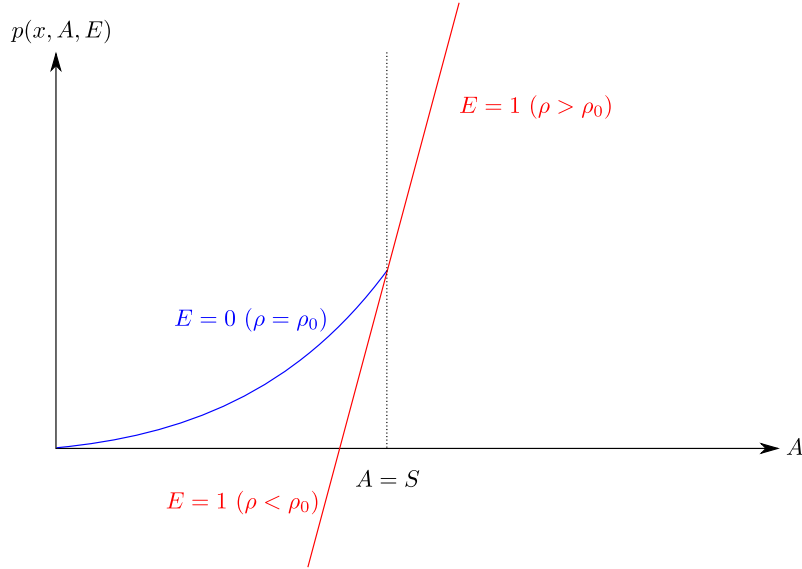


Figure 7: Pressure law in the case of pipe with circular section.

**Remark 4.2.** *The transition point ( $\rho = \rho_0$ ) is then a bifurcation point.*

From the **FS**-model (70), the **P**-model (71), the “mixed” variables (74)-(75), the state indicator  $E$  (72), the physical height of water  $\mathbf{S}$  (73) and the pressure law (76), we can define the **PFS**-model (**P**ressurised and **F**ree **S**urface) for unsteady mixed flows in closed water pipes with variable section and slope, as follows:

$$\left\{ \begin{array}{l} \partial_t A + \partial_x Q = 0 \\ \partial_t Q + \partial_x \left( \frac{Q^2}{A} + p(x, A, E) \right) = -gA \frac{dZ}{dx} + Pr(x, A, E) \\ \quad \quad \quad -G(x, A, E) \\ \quad \quad \quad -gK(x, A, E) \frac{Q|Q|}{A} \end{array} \right. \quad (79)$$

where  $Pr$ ,  $K$ , and  $G$  represent respectively the pressure source term, the curvature term and the friction:

$$\begin{aligned}
 Pr(x, A, E) &= c^2 \left( \frac{A}{S} - 1 \right) \frac{dS}{dx} + gI_2(x, \mathbf{S}) \cos \theta \\
 &\text{with } I_2(x, \mathbf{S}) = \int_{-R(x)}^{\mathcal{H}(\mathbf{S})} (\mathcal{H}(\mathbf{S}) - z) \partial_x \sigma(x, z) dz, \\
 G(x, A, E) &= gA \bar{z}(x, \mathbf{S}) \frac{d}{dx} \cos \theta, \\
 K(x, A, E) &= \frac{1}{K_s^2 R_h(\mathbf{S})^{4/3}}.
 \end{aligned}$$

**Remark 4.3.** From the **PFS** equations, it is easy to recover the **FS**-model. Indeed, if  $E = 0$  then  $\mathbf{S}(A, E) = A$  and the pressure law (76) is the hydrostatic pressure, the term  $Pr$  is also the hydrostatic pressure source term. It follows that the **PFS**-system (79) coincide exactly with the **FS**-model (70).

If  $E = 1$ , then  $\mathbf{S}(A, E) = S$  and the pressure law gives  $c^2(A - S) + gI_1(x, S) \cos \theta$  which is exactly the linearised pressure law if we consider  $p_a(x) = gI_1(x, S) \cos \theta$  instead of 0. We can then see the term  $p_a$  as a limit state between an over-pressurized zone and a de-pressurized one. We show different situations on FIG. 8.

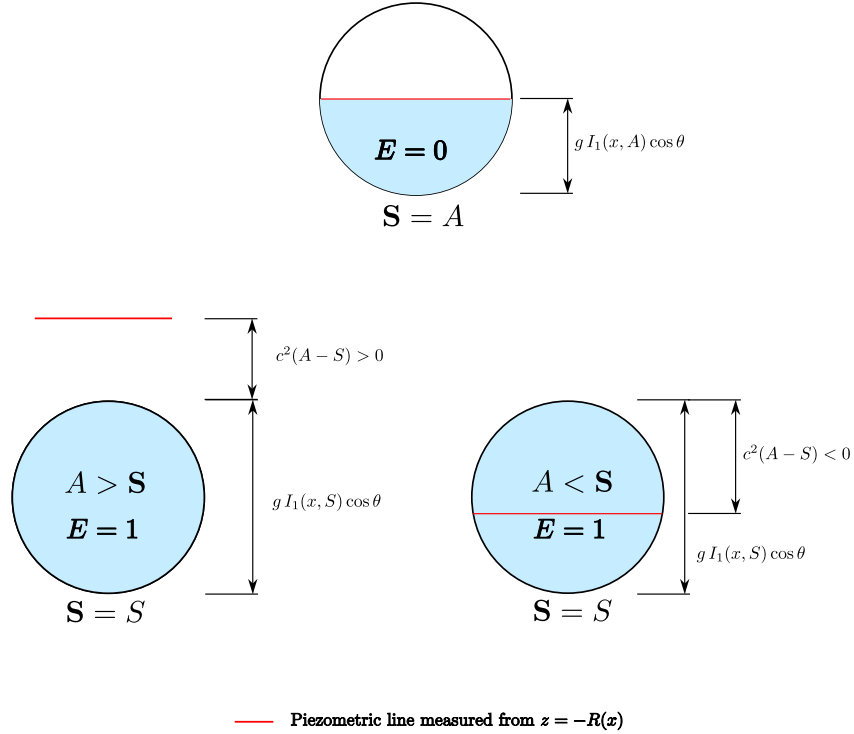


Figure 8: Free surface state  $p(X, A, 0) = g I_1(X, A) \cos \theta$  (top), pressurized state with overpressure  $p(x, A, 1) > 0$  (bottom left), pressurized state with depression  $p(x, A, 1) < 0$  (top right).

**Remark 4.4.** We have seen that when the flow is fully pressurized, the overpressure states are reported when  $A > S$  and depression states when  $A < S$ . However, when the flow is mixed and



$A < S$ , we do not know a priori if the state is free surface or pressurized. Therefore, the indicator state  $E$  is there to overcome this difficulty. Thus, combining this with a discrete algorithm on  $E$  is useful to describe both depression areas and free surface ones. When  $A > S$ , without any ambiguity, the pressurized state is proclaimed. From a numerical point of view, the transition points between two types of flows are treated as a free boundary, corresponding to the discontinuity of the gradient of the pressure (for more details, see [5, 16]).

The **PFS**-model (79) satisfies the following properties:

**Theorem 4.1.**

1. The right eigenvalues of System (79) are given by:

$$\lambda^- = u - c(A, E), \quad \lambda^+ = u + c(A, E)$$

$$\text{with } c(A, E) = \begin{cases} \sqrt{g \frac{A}{T(A)} \cos \theta} & \text{if } E = 0, \\ c & \text{if } E = 1. \end{cases}$$

Then, System (79) is strictly hyperbolic on the set:

$$\{A(t, x) > 0\} .$$

2. For smooth solutions, the mean velocity  $u = Q/A$  satisfies

$$\begin{aligned} \partial_t u + \partial_x \left( \frac{u^2}{2} + c^2 \ln(A/S) + g\mathcal{H}(S) \cos \theta + gZ \right) \\ = -gK(x, A, E)u|u| \leq 0. \end{aligned} \quad (80)$$

The quantity  $\frac{u^2}{2} + c^2 \ln(A/S) + g\mathcal{H}(S) \cos \theta + gZ$  is called the total head.

3. The still water steady state reads:

$$u = 0 \quad \text{and} \quad c^2 \ln(A/S) + g\mathcal{H}(S) \cos \theta + gZ = \text{cte}. \quad (81)$$

4. It admits a mathematical entropy

$$\mathcal{E}(A, Q, E) = \frac{Q^2}{2A} + c^2 A \ln(A/S) + c^2 S + gA\bar{z}(x, S) \cos \theta + gAZ \quad (82)$$

which satisfies the entropy relation for smooth solutions

$$\partial_t \mathcal{E} + \partial_x \left( (\mathcal{E} + p(x, A, E)) u \right) = -gAK(X, A, E)u^2|u| \leq 0. \quad (83)$$

Notice that the total head and  $\mathcal{E}$  are defined continuously through the transition points.

**Remark 4.5.** The term  $A\bar{z}(x, A)(\cos \theta)'$  is also called “corrective term” since it allows to write the equation (80) and (83) with (82).

**Proof of Theorem 4.1:** The results (80) and (83) are obtained in a classical way. Indeed, Equation (80) is obtained by subtracting the result of the multiplication of the mass equation by  $u$  to the momentum equation. Then multiplying the mass equation by  $\left(\frac{u^2}{2} + c^2 \ln(A/\mathbf{S}) + g\mathcal{H}(\mathbf{S}) \cos \theta + gZ\right)$  and adding the result of the multiplication of Equation (80) by  $Q$ , we get:

$$\begin{aligned} & \partial_t \left( \frac{Q^2}{2A} + c^2 A \ln(A/\mathbf{S}) + c^2 S + gA\bar{z}(x, \mathbf{S}) \cos \theta + gAZ \right) \\ & + \partial_x \left( \left( \frac{Q^2}{2A} + c^2 A \ln(A/\mathbf{S}) + c^2 S + gA\bar{z}(x, \mathbf{S}) \cos \theta + gAZ + p(x, A, E) \right) u \right) \\ & + c^2 \left( \frac{A}{\mathbf{S}} - 1 \right) \partial_t \mathbf{S} = -gAK(x, A, E)u^2|u| \leq 0. \end{aligned}$$

We see that the term  $c^2 \left( \frac{A}{\mathbf{S}} - 1 \right) \partial_t \mathbf{S}$  is identically 0 since we have  $\mathbf{S} = A$  when the flow is free surface whereas  $\mathbf{S} = S(x)$  when the flow is pressurised. Moreover, from the last inequality, when  $\mathbf{S} = A$ , we have the classical entropy inequality (see [6, 7]) with  $\mathcal{E}$ :

$$\mathcal{E}(A, Q, E) = \frac{Q^2}{2A} + gA\bar{z}(x, A) \cos \theta + gAZ$$

while in the pressurised case, it is:

$$\mathcal{E}(A, Q, E) = \frac{Q^2}{2A} + c^2 A \ln(A/S) + c^2 S + gAZ.$$

Finally, the entropy for the **PFS**-model reads:

$$\mathcal{E}(A, Q, E) = \frac{Q^2}{2A} + c^2 A \ln(A/\mathbf{S}) + c^2 S + gA\bar{z}(X, \mathbf{S}) \cos \theta + gAZ.$$

Let us remark that the term  $c^2 S$  makes  $\mathcal{E}$  continuous through transition points and it permits also to write the entropy flux under the classical form  $(\mathcal{E} + p)u$ . ■

## 5 Perspectives

In view of the difference of sound speed ( $c \approx 1400$  m/s for a pressurised state and  $c \approx 1$  m/s for a free surface state), the gradient of the pressure, thus the flux of the **PFS** equations, is discontinuous throughout the transition points. More generally, these equations belong to a class of hyperbolic systems of conservation laws with discontinuous gradient, especially a generalization of equations coupled through a fixed discontinuity (see [20, 23, 22] with the classical example of Lighthill-Whitham-Richards model for road traffic) since, in the present case the discontinuity is mobile. It is then an interesting and a difficult problem because of the definition of the solution associated to the Riemann problem. In general, given two initial states which are not connected by a shock wave, there exists an infinite number of paths to connect them through the interface. For instance, in Boutin's thesis [9], he defined paths using physical criteria that enable to extract the solution. To our knowledge, and up to date, there are no results for the mobile discontinuities and the **PFS**-model is a nice example of such open problem. However, in each region where the gradient of the flux is continuous, the solution is constructed in a classical way (see, for example, [26]).

## Acknowledgements

This work is supported by the “Agence Nationale de la Recherche” referenced by ANR-08-BLAN-0301-01 and the second author was supported by the ERC Advanced Grant FP7-246775 NUMERI-WAVES.

## References

- [1] B. Alvarez-Samaniego and D. Lannes. Large time existence for 3D water-waves and asymptotics. *Invent. Math.*, 171(3):485–541, 2008.
- [2] G. Blommaert. *Étude du comportement dynamique des turbines francis: contrôle actif de leur stabilité de fonctionnement*. PhD thesis, EPFL, 2000.
- [3] F. Bouchut, E.D. Fernández-Nieto, A. Mangeney, and P.-Y. Lagrée. On new erosion models of Savage-Hutter type for avalanches. *Acta Mech.*, 199(1-2):181–208, 2008.
- [4] F. Bouchut, A. Mangeney-Castelnau, B. Perthame, and J.-P. Vilotte. A new model of Saint Venant and Savage-Hutter type for gravity driven shallow water flows. *C. R. Math. Acad. Sci. Paris*, 336(6):531–536, 2003.
- [5] C. Bourdarias, M. Ersoy, and S. Gerbi. A model for unsteady mixed flows in non uniform closed water pipes and a well-balanced finite volume scheme. *International Journal On Finite Volumes*, 6(2):1–47, 2009.
- [6] C. Bourdarias and S. Gerbi. A finite volume scheme for a model coupling free surface and pressurised flows in pipes. *J. Comp. Appl. Math.*, 209(1):109–131, 2007.
- [7] C. Bourdarias and S. Gerbi. A conservative model for unsteady flows in deformable closed pipe and its implicit second order finite volume discretisation. *Computers & Fluids*, 37(10):1225–1237, 2008.
- [8] C. Bourdarias, S. Gerbi, and M. Gisclon. A kinetic formulation for a model coupling free surface and pressurised flows in closed pipes. *J. Comp. Appl. Math.*, 218(2):522–531, 2008.
- [9] B. Boutin. *Étude mathématique et numérique d’équations hyperboliques non-linéaires : couplage de modèles et chocs non classiques*. PhD thesis, CEA de Saclay et Laboratoire J.-L. Lions, 2009.
- [10] M. Boutounet, L. Chupin, P. Noble, and J-P. Vila. Shallow water viscous flows for arbitrary topography. *Commun. Math. Sci.*, 6(1):29–55, 2008.
- [11] D. Bresch and P. Noble. Mathematical justification of a shallow water model. *Methods Appl. Anal.*, 14(2):87–117, 2007.
- [12] H. Capart, X. Sillen, and Y. Zech. Numerical and experimental water transients in sewer pipes. *Journal of Hydraulic Research*, 35(5):659–672, 1997.
- [13] J.A. Cunge. Modèle pour le calcul de la propagation des crues. *La Houille Blanche*, 3:219–223, 1971.

- [14] A. Decoene, L. Bonaventura, E. Miglio, and F. Saleri. Asymptotic derivation of the section-averaged shallow water equations for natural river hydraulics. *Methods Appl. Anal.*, 14(2):87–117, 2007.
- [15] Nguyen Trieu Dong. Sur une méthode numérique de calcul des écoulements non permanents soit à surface libre, soit en charge, soit partiellement à surface libre et partiellement en charge. *La Houille Blanche*, 2:149–158, 1990.
- [16] M. Ersoy. *Modélisation, analyse mathématique et numérique de divers écoulements compressibles ou incompressibles en couche mince*. PhD thesis, Université de Savoie (France), 2010.
- [17] M. Fuamba. Contribution on transient flow modelling in storm sewers. *Journal of Hydraulic Research*, 40(6):685–693, 2002.
- [18] J.-F Gerbeau and B. Perthame. Derivation of viscous Saint-Venant system for laminar shallow water; numerical validation. *Discrete Contin. Dyn. Syst. Ser. B*, 1(1):89–102, 2001.
- [19] C-D. Levermore, M. Oliver, and Edriss S. Titi. Global well-posedness for models of shallow water in a basin with a varying bottom. *Indiana University Mathematics Journal.*, 45(2), 1996.
- [20] M. J. Lighthill and G. B. Whitham. On kinematic waves. ii. A theory of traffic flow on long crowded roads. *Proc. R. Soc. Lond. A*, 229(1781):317–345, 1955.
- [21] F. Marche. Derivation of a new two-dimensional viscous shallow water model with varying topography, bottom friction and capillary effects. *European Journal of Mechanic. B, Fluids*, 26(1):49–63, 2007.
- [22] S. Mochon. An analysis of the traffic on highways with changing surface conditions. *Mathematical Modelling*, 9(1):1–11, 1987.
- [23] P.I. Richards. Shock waves on the highway. *Operations Research*, 4(1):42–51, 1956.
- [24] P.L. Roe. Some contributions to the modelling of discontinuous flows. In *Large-scale computations in fluid mechanics, Part 2 (La Jolla, Calif., 1983)*, volume 22 of *Lectures in Appl. Math.*, pages 163–193. Amer. Math. Soc., Providence, RI, 1985.
- [25] V.L. Streeter, E.B. Wylie, and K.W. Bedford. *Fluid Mechanics*. McGraw-Hill, 1998.
- [26] E. F. Toro. Riemann problems and the WAF method for solving the two-dimensional shallow water equations. *Philos. Trans. Roy. Soc. London Ser. A*, 338(1649):43–68, 1992.
- [27] E.B. Wylie and V.L. Streeter. *Fluid Transients*. McGraw-Hill, New York, 1978.