

## 蹦蹦属二新种的记述

(直翅目: 斑腿蝗亚科)

黄春梅

(中国科学院动物研究所)

蹦蹦属已知有11种, 分布在我国东南部及台湾省。作者在整理标本时发现二新种。现将新种记述如下。

所有模式标本均保存在中国科学院动物研究所。

九连山蹦蹦 *Sinopodisma jiulianshana*, 新种

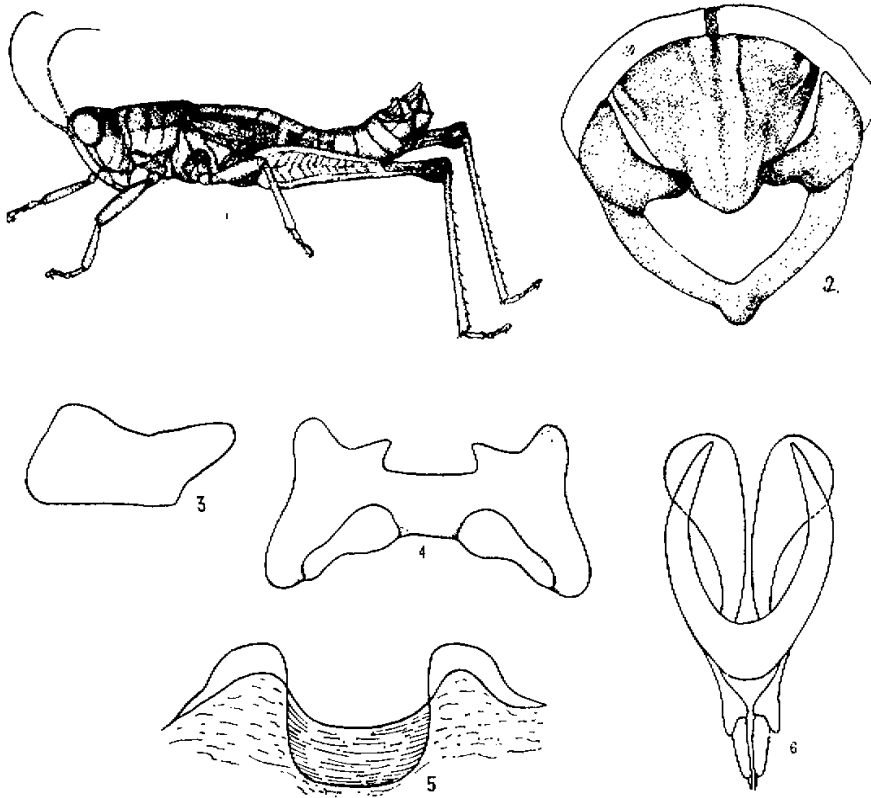
雄: 体形中等。头短。复眼间头顶的宽度狭于触角间颜面隆起的宽度。颜面隆起明显, 具纵沟或纵沟不明显, 两侧缘几乎平行。颜面侧隆线明显。触角丝状, 超过前胸背板的后缘。复眼卵形, 垂直直径为水平直径的1.2—1.3倍, 为眼下沟长的1.6—1.8倍。前胸背板圆柱状, 具点刻; 中隆线低、细, 被3条横沟所割断; 沟前区的长度为沟后区长度的1.8—2.0倍; 前缘微弧形, 后缘具小的三角形凹口; 侧片长大于高。前胸腹板突圆锥状, 顶端钝圆。中胸腹板侧叶长宽相等, 侧叶间之中隔的长度为其最狭处的1.3—2.0倍。后胸腹板侧叶彼此分开。鼓膜器发达。前翅鳞片状, 侧置, 略超过腹部第1节背板的后缘, 完全复盖鼓膜器, 长为宽的2.5—2.9倍。后足股节上侧上隆线平滑, 顶端具尖刺。后足胫节缺外端刺, 内、外缘各具刺9—10枚。腹部末节背板后缘具钝圆形的尾片。肛上板三角形, 端部钝圆, 基部两侧具小隆脊, 端部两侧具纵隆脊, 纵沟在基部一半明显, 较深。尾须向内弯曲, 外下缘具一钝齿, 略不到达肛上板的后缘。下生殖板锥形, 顶端较尖。

体褐色。复眼后方具黑色纵条纹, 此条纹向后延伸至中、后胸背板两侧, 前翅和腹部1—5节背板侧缘。前胸背板侧片黄绿色。前翅暗褐色。后足股节内、外侧黄绿色或橄榄绿色。上、下膝侧片黑色。后足胫节蓝绿色, 刺黑色。

雌: 体较粗大。前翅到达或略不到达腹部第1节背板的后缘, 两侧缘平行, 端部狭圆形。肛上板三角形, 端部圆。产卵瓣狭长, 上产卵瓣的上外缘具细齿, 下产卵瓣的下外缘平滑。下生殖板长方形, 后缘中央呈锐角突出。

\*特征图由崔云瑞同志绘制, 特此致谢。

本文1981年8月26日收到。



1—6 九连山蹦蝗 *Sinopodisma jiulianshana*, 新种 (♂)

1. 整体 2. 肛上板 3. 尾须 4. 阳茎基背片前面观 5. 阳茎基背片后面观 6. 阳茎复合体

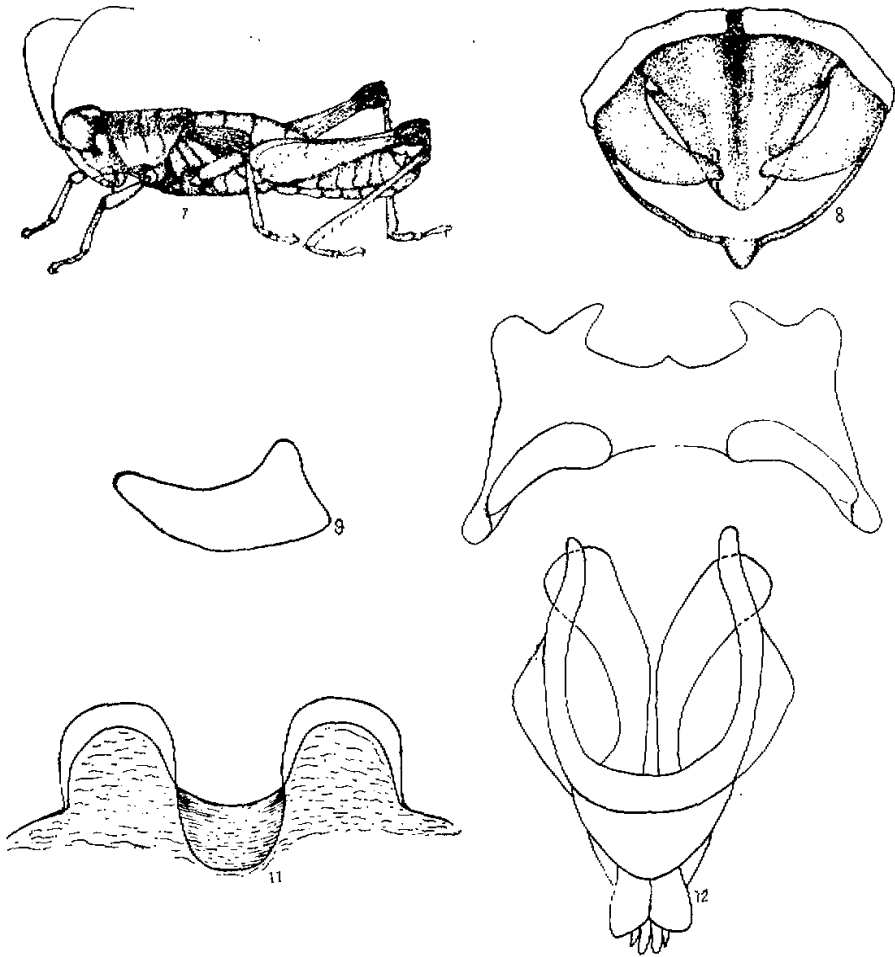
体长：雄21.0—21.5，雌27.5—29.4毫米；前翅长：雄3.4—4.5，雌4.5—5.0毫米；前胸背板长：雄4.9—5.1，雌5.9—6.7毫米。

正模♂，配模♀，江西：九连山，1979.Ⅷ.30，虞佩玉。副模4♂♂，5♀♀，同正模；1♂2♀♀，江西：于都，1973.Ⅹ.29；1♀，江西：莲花，1980.Ⅷ.3；1♀，江西：牙前山牛塘坑，1979.Ⅷ.30；2♂♂，江西：吉安，1980；1♂新建。

本种近似 *Sinopodisma lofaoshana* (Tinkham)，主要区别在于雄性尾须形状不一，肛上板顶端不尖；前翅较短，不到达腹部第2节背板的后缘。

霍山蹦蝗 *Sinopodisma houshana*, 新种

雄 体形中等。头短。复眼间头顶的宽度略小于触角间颜面隆起的宽度。颜面隆起明显，纵沟浅，两侧缘几乎平行。颜面侧隆线明显。触角丝状，超过前胸背板的后缘较远。复眼卵圆形，垂直直径为水平直径的1.3倍，为眼下沟长的1.7—2.0倍。前胸背板

7—12 霍山瑞蝗 *Sinopodisma houashana*, 新种 (♂)

7. 整体 8. 肛上板 9. 尾须 10. 阳茎基背片前面观 11. 阳茎基背片后面观 12. 阳茎复合体

中隆线低、细；后横沟明显割断中隆线，前、中横沟不割断或略割断中隆线，沟前区的长度为沟后区长度的1.7—2.0倍；前缘略为弧形，后缘具明显的凹口或不具凹口。前翅略不到达腹部第1节背板的后缘或到达腹部第2节的中部。后足胫节无外端刺。雄性腹部末节背板的后缘具尾片。尾须、肛上板的形状见图8、9。

体黄褐至褐色或橄榄绿色。复眼后方具黑色纵条纹，此条纹向后延伸至腹部1—6节。前胸背板中隆线处黑色。前翅臀脉域前为黑色。后足股节内、外侧红褐色，尤其底侧红褐色更明显，股节膝侧片黑色。后足胫节蓝绿色。

雌：近似雄性。体较粗壮，褐色。后足股节内侧和底侧均为红褐色，具暗色斑纹，外侧褐色具暗色斑纹。

体长，雄19.7—21.9，雌28—29毫米；前翅长，雄4.3—4.5，雌5.1毫米；前胸背板长，雄5.0，雌6.4毫米；后足股节长，雄11.8—12.5，雌13.5—14.5毫米。

正模♂，配模♀，副模5♂♂，安徽霍山（900米），1978.V.2，王书永采。副模1♂2♀♀，安徽大别山，1978.VI.31；1♂，安徽黄山，1978.VII.18，均由王书永采。

本种近似比氏翅蝗 *Sinopodisma pieli* (Chang)，但后足股节内、外侧及底侧为红褐色，前胸背板中隆线处具狭的黑色纵条纹可与后者区别之。

## TWO NEW SPECIES OF *Sinopodisma* CHANG (ORTHOPTERA: CATANTOPINAE)

Huang Chunmei

(*Institute of Zoology, Academia Sinica*)

The present paper describes two new species of *Sinopodisma* Chang from China.

All type specimens preserved in the Institute of Zoology, Academia Sinica.  
*Sinopodisma jiulianshana*, sp. nov.

Male: Size medium. Antennae slender, extending over the posterior margin of pronotum. Eyes oval, its vertical diameter 1.6—1.8 times the distance of subocular suture. Pronotum cylindrical, median keel low, weak, cut by three transverse culci, the length of prozona about 1.8—2.0 times the length of metazona, posterior margin slightly emarginated. Prosternal spine conical, blunt rounded at apex. Mesosternal lobes as broad as length, the length of interspace between mesosternal lobes 1.3—2.0 times the minimum width. Elytra narrow, its length about 2.5—2.9 times the broad, extending slightly beyond the posterior margin of first abdominal segment. Tympanum developed. Hind tibia without outer apical spine. The forms of analplate and cerci as fig. 2, 3.

Body brownish. Behind the eyes, the sides of pronotum, mesonotum, metanotum, 1—5 abdominal segments and the posterior margin of elytra with black bands. Elytra dark brown. The inner and outer sides of hind femora yellowish green or olive green.

Female: Body robust, larger than male. Subgenital plate longer than broad, with acut triangular projection at middle of posterior margin.

Holotype ♂, Allotype ♀, Jiuliashan, Jiangxi, 30. X. 1979, collected by Yu Peiyu.

This new species is closely related to *S. lofaoshana* (Tinkham), but differs by the form of cerci, the apex of supraanal plate not pointed, elytra shorter, not reaching the posterior margin of 2nd abdominal segment.

*Sinopodisma houshana*, sp. nov.

Male: Size medium. Head short. Antennae extending over the posterior margin of pronotum obviously. Eyes oval, the vertical diameter 1.7—2.0 times the distance of subocular suture. Pronotum cylindrical, median keel low, weak, cut by hind transverse culeus obviously, the length of prozona 1.7—2.0 times the length of metazona, posterior margin emarginal or not. Elytra not reaching slightly posterior margin of 1st abdominal segment or reaching the middle of 2nd. Hind tibia without outer apical spine. The forms of cerci and analplate as fig. 8.9.

Body yellowish brown, brown or olive green. The black band from behind the eyes continued to the 6th abdominal segments. The median keel of pronotum and before the anal area of elytra black, the inner and outer sides of hind femora red brown. Hind tibia blue green.

Female: Allied to male.

Holotype ♂, Allotype ♀, Houshan, Anhui, 2. X. 1978, collected by Wang Shuyoung.

This new species similar to *S. pieli* (Chang), but differs by the inner and outer sides of hind femora red brown and the median keel of pronotum with narrow black longitudinal stripe.