

杉卷赤眼蜂新种记述

(膜翅目: 赤眼蜂科)

陈泰鲁 庞雄飞

(中国科学院动物研究所) (华南农学院)

在杉梢小卷蛾 *Polychrosis cunninghamiacola* Liu et Pai 卵中发现有三种赤眼蜂寄生。据湖南和江西两地调查, 大部分为拟澳洲赤眼蜂 *Trichogramma confusum* Viggiani 和松毛虫赤眼蜂 *T. dendrolimi* Matsumra。在江西还有另一种赤眼蜂, 经研究鉴定为一新种, 属赤眼蜂科 (*Trichogrammatidae*)、赤眼蜂属 (*Trichogramma*) , 订名为杉卷赤眼蜂 *Trichogramma polychrosis* Chen et Pang。模式标本保存于中国科学院动物研究所。

杉卷赤眼蜂 *Trichogramma polychrosis* Chen et pang 新种

雄: 成虫体长0.40毫米, 头宽0.22毫米。体黄色, 中胸盾片及腹部部分淡黄褐色。触角(图1)毛细长, 约45根, 最长的近于鞭节最宽处的2.4倍。前翅(图2)臀角缘毛的长度相当于翅最宽处的1/6。雄性外生殖器(图3): 阳基背突末端钝圆如指状, 伸达D的3/5处, 不突出于侧瓣之外; 腹中突小, 锐角形, 其长度相当于D的2/5; 中脊成对, 向前伸至接近阳基基部的前缘, 钩爪成二叶, 钩状、弯曲弧度大, 基部靠近腹中突两侧还有小突起, 整个基部也不和腹中突靠齐, 而延至中脊的基部, 钩爪端部水平线达D的7/10; 阳基和其内突约等长, 两者全长稍短于阳基的长度, 短于后足胫节。

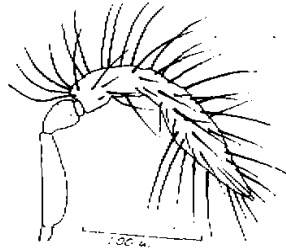


图1 触角(♂)

雌: 体长0.50毫米。体黄, 产卵器的长度相当于后足胫节的 $1\frac{1}{5}$ 。

正模♂(雄外生殖器固定于玻片中), 配模♀、副模1♂2♀♀, 寄生于杉梢小卷蛾卵中, 1977.VI.7.刘友樵、沈光普采自江西余干。

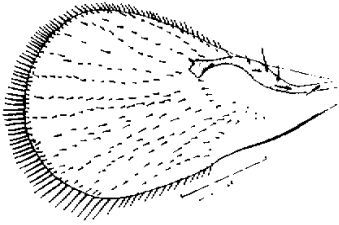


图2 前翅♀

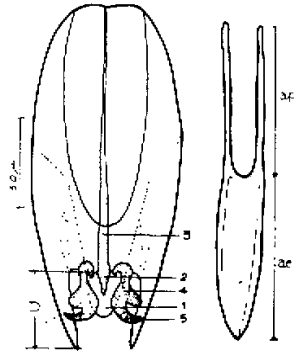


图3 雄性外生殖器

阳基: 1. 阳基背突; 2. 腹中突; 3. 中脊;
4. 钩爪; 5. 阳基侧瓣
阳基: ac. 阳基; ap. 阳基内突。

分布: 江西。

寄主: 杉梢小卷蛾 *Polychrosis cunninghamiacola* Liu et Pai。

该种的雄性外生殖器近似宽突赤眼蜂 *T. bennetti* Nagaraja et Nagarkatti, 但阳基背突比后者窄, 钩爪粗大, 同时弯曲的弧度也大, 如称钩状, 基部还有小突起, 中脊向阳基基部延伸比宽突赤眼蜂长, 故易于区别。

参 考 文 献

- 庞雄飞、陈泰鲁 1974 中国的赤眼蜂属 *Trichogramma* 记述。昆虫学报 17 (4): 441—454。
Naparaja, H. et Nagarkatti, S. 1973 A key to some New World species of *Trichogramma* (Hymenoptera: Trichogrammatidae), with descriptions of four new species. *Proc. Ent. Soc. Wash.* 75 (3): 288—297.

TRICHOGRAMMA POLYCHROSIS, A NEW SPECIES OF *TRICHOGRAMMATIDAE* (HYMENOPTERA)

Chen Tailu

(*Institute of Zoology, Academia Sinica*)

Pang Xiongfei

(*South China Agricultural College*)

Abstract

The present paper deals with a new species of *Trichogramma* Westwood,

from the eggs of *Polychrosis cunninghamicola* Liu et Pai. Described as follows.

Trichogramma polychrosis Chen et Pang, sp. n.

Male: Yellow, mesoscutum and part of abdomen yellowish brown, around 45 long antennal hairs, the longest approximately 2.4 times of the maximum width of flagellum; fringe on tornus of forewing about $1/6$ the width of the wing. Genitalia: Dorsal expansion of gonobase extending to near $3/5D$, with round posterior extremity, without lateral lobes, median ventral projection minute, triangular, $2/5$ as long as D . Median sclerotized ridge paired, extending anteriorly to the base of gonobase; chelate structures shown in fig. 3, extending base of sclerotized ridge to $7/10 D$; the length of aedagus and apodemes added together a little bit shorter than gonobase, shorter than hind tibia.

Length: 0.4mm. Width cross head: 0.22mm.

Female: Yellow. Ovipositor about $1\frac{1}{2}$ length of hind tibia.

Length: 0.5mm.

Holotype: Male and its genitalia slide. Allotype of female on slide. Paratypes 1 male and 2 females on slides. All from Jaingxi, China (1977, 7, VII by Liu Youqiao). Type specimens are deposited at the Institute of Zoology, Academia Sinica.