

云南毛蚜属二新种

张广学 钟铁森

(中国科学院动物研究所 北京)

关键词: 毛蚜属 滇杨毛蚜 住杨毛蚜 滇杨 毛白杨 新种

本文记述云南杨树上的毛蚜科Chaitophoridae毛蚜属*Chaitophorus* Koch, 1854 二新种。模式标本存中国科学院动物研究所。

滇杨毛蚜 *Chaitophorus populi yunnanensis* Zhang, 新种

与*Chaitophorus leucomelas* Koch, 1854 近缘, 但头、胸、股节及腹管均淡色(*C. leucomelas* 为深色); 体背片表皮光滑(后者有小颗粒构造); 腹部背毛为触角节Ⅲ基宽的2.0—8.8(后者3.0—6.5)倍; 触角节Ⅲ的毛长为该节基宽的4.3(后者3.0)倍。

数据 头部毛22—24, 前胸毛20, 腹管背片毛18—22; 触角节Ⅰ毛4或5, Ⅰ4或5, Ⅱ14—18, Ⅲ8—12, Ⅳ4—6, Ⅴ2—3+0, 顶端2; 膝节Ⅳ+Ⅴ次生毛6—8, 跗节Ⅰ7; 尾片毛15—24, 尾板毛30—36根。长或宽(毫米); 体长2.06, 宽1.16; 触角长1.236, 节Ⅲ0.322, Ⅳ0.206, Ⅴ0.164, Ⅵ0.092+0.307, Ⅶ宽0.039, 毛长0.168; 膝节Ⅳ+Ⅴ长0.120, 后股节0.487, 后胫节0.811, 后跗节Ⅰ0.121; 头顶毛0.200, 腹节Ⅰ毛0.245, Ⅱ0.252, 背面短毛0.084, 后胫节毛0.162。

正模 无翅孤雌蚜, 玻片号7155-1-3-2, 副模: 4无翅孤雌蚜, 8有翅孤雌蚜, 1980. V. 25, 云南丽江, 钟铁森采自滇杨。

住杨毛蚜 *Chaitophorus populi habitans* Zhang, 新种

与*Chaitophorus truncatus* (Hausmann, 1802) 近缘, 但寄主植物为毛白杨, 不为青柳(*C. truncatus*, 多种柳树); 腹部背毛为触角Ⅲ基宽2.0—8.3(后者4—6)倍; 触角节Ⅲ毛为该节基宽的0.60—2.3(后者2—4)倍。有翅孤雌蚜触角节Ⅳ及Ⅴ有时各有次生感觉圈1个(后者依次有0—3, 0—2个)。

数据 头部毛36—42; 前胸毛26—29; 腹节Ⅰ毛48, Ⅱ20—21; 触角节Ⅰ毛8, Ⅰ4, Ⅱ12, Ⅲ4或5, Ⅳ2—4, Ⅴ2或3+0根, 顶端2—3根; 膝节Ⅳ+Ⅴ次生毛4—6; 跗节Ⅰ7, 尾片毛7—9, 尾板毛20—23根。长或宽(毫米); 体长2.00, 宽

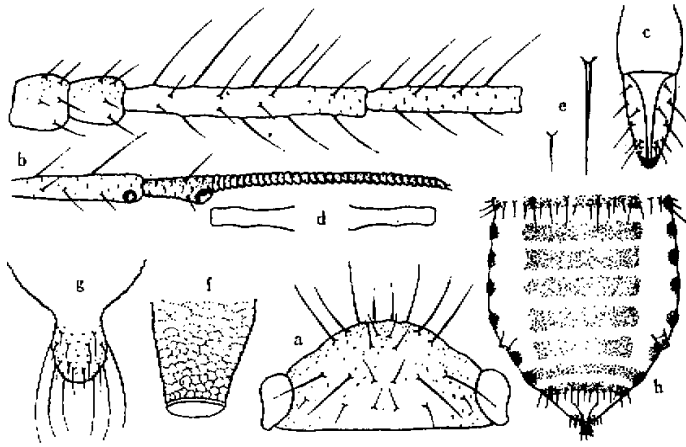


Fig. 1 *Chaitophorus populiunnanensis* Zhang, sp. nov.
Apterous viviparous female,

- | | |
|--|--------------------------|
| a dorsal view of head; | b antennal segment I-VI; |
| c apical rostral segments; | d mesosternal furca; |
| e dorsal setae; | f siphunculus; |
| g cauda; | |
| h dorsal view of abdominal pattern of pigmentation | |
- Alate viviparous female;

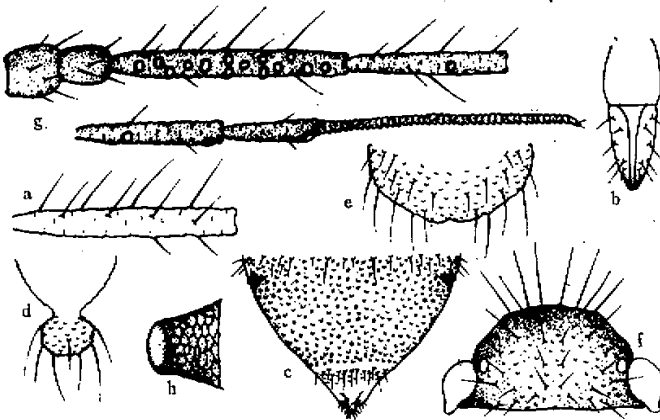


Fig. 2 *Chaitophorus populihabitans* Zhang, sp. nov.
Apterous viviparous female,

- | | |
|---|----------------------------|
| a antennal segment II; | b apical rostral segments; |
| c dorsal sculpture of abdominal segments IV-VI; | d cauda; |
| e anal plate; | f dorsal view of head; |
| g antennal segments I-VI; | h siphunculus; |
- Alate viviparous female;

1.10; 触角长1.157, 节Ⅰ0.284, N0.174, V0.155, VI0.119+0.305, Ⅱ中宽0.034, 毛长0.096, 喙节IV+V0.109, 后股节0.437, 后胫节0.655, 后跗节Ⅰ0.107, 头顶毛长0.176, 腹节I毛0.168, Ⅳ毛0.196, 背面短毛0.059, 后胫节毛0.110。

正模 无翅孤雌蚜, 玻片号7196-1-2-3, 副模, 6无翅孤雌蚜, 4有翅孤雌蚜。
1980. V.30. 云南丽江, 毛白杨, 钟铁森采。

参 考 文 献

- Eastop, V. F. & D. Hille Ris Lambers, 1976 Survey of the world's aphids. Dr. W. Junk b. v., Publishers, The Hague. 1—572
- Heie, Ole E. 1982 The Aphidoidea (Hemiptera) of Fennoscandia and Denmark. II. The family Drepanosiphidae. Scandinavian Science Press Ltd. Klampenborg. Denmark. 1—176
- Higuchi, H. 1972 A taxonomic study of the subfamily Callipterinae in Japan. *Insecta Matsum.* 35:19—126
- Stroyan, H. L. G. 1977 Homoptera Aphidoidea (part) Chaitophoridae & Callaphididae. Handbooks for identification of British insects. Vol. II part 4(a): 1—130

TWO NEW SPECIES OF *CHAITOPHORUS* Koch FROM YUNNAN, CHINA (APHIDOIDEA: CHAITOPHORIDAE)

Zhang Guangxue Zhong Tiesen

(Institute of Zoology, Academia Sinica, Beijing)

In present paper 2 new species of *Chaitophorus* Koch are described. Type specimens are deposited in the Institute of Zoology, Academia Sinica.

Chaitophorus populiunnanensis Zhang, sp. nov.

Differs from the closely related *Chaitophorus leucomelas* Koch, 1854 in the following features: Head, thorax, femur and siphunculus pale, tergites with cuticular smooth, abdominal tergites with setae 2.0—8.8x as basal width of 3rd antennal segment, 3rd antennal segment with setae 4.3x as basal width of the segment, 4th+5th rostral segments most often with 6—8 subsidiary setae.

Holotype, apterous viviparous female, no. 7155-1-3-2, paratypes, 4 apterous viviparous females and 8 alate viviparous females. Lijiang Xian, Yunnan Province, China, 25. V. 1980, on *Populus yunnanensis* Dode, Coll. Zhong Tiesen.

Chaitophorus populihabitans Zhang, sp. nov.

May be distinguished from the very closely related *Chaitophorus truncatus* (Hausmann, 1802) by the following features: *Populus alba* L. as hostplant, never on *Salix* spp., abdominal tergites with setae 2.0–8.3x as basal width of 3rd antennal segment, 3rd antennal segment with setae 0.60–2.3x as basal width of the segment, 4th and 5th antennal segments at most with one secondary sensorium each occasionally.

Holotype, apterous viviparous female, no. 7196–1–2–3, paratypes, 6 apterous viviparous females and 4 alate viviparous females. Lijiang Xian, Yunnan Province, China, 30. v. 1980, on *Populus alba* L., Coll. Zhong Tiesen.

Key words *Chaitophorus*
Chaitophorus populi yunnanensis
Chaitophorus populihabitans
Populus yunnanensis
Populus alba
Species nova