

First record of the genus *Locheutis* Meyrick from China, with description of one new species

(Lepidoptera: Oecophoridae)

WANG Shu-Xia

(Department of Biology, Nankai University, Tianjin 300071)

Abstract: The genus *Locheutis* Meyrick was reported for the first time from China, with one species described as new to science: *L. tianmushana* sp. nov. The male genital structure of the new species is figured. The type specimens are deposited in the Department of Biology, Nankai University.

Key words: Lepidoptera; Oecophoridae; *Locheutis*; new species; China

Locheutis Meyrick was erected in 1883, with *Locheutis philochsra* Meyrick as its type. There are fourteen species known in the world up to date^[1-4]. Among them, ten species are distributed in Australia^[5], three were reported from New Zealand and one was found in Sri Lanka. This paper deals with one new species collected from Mt. Tianmushan, Zhejiang Province, China. The type specimens are deposited in the Department of Biology, Nankai University.

Locheutis Meyrick, 1883 New record to China

Locheutis Meyrick, 1883, *Proc. Linn. Soc. N. S. Wales*, 8: 341.

Type species: *Locheutis philochora* Meyrick, 1883.

Head with appressed scales, sidetufts somewhat spreading. Antennae about 3/4 of the forewing, basal segment moderately elongate, without pecten. Labial palpi very long, recurved, second segment reaching or exceeding base of antennae, terminal segment nearly as long as second, slender, acute. Forewing with R_4 and R_5 stalked, R_5 reaching apex. Hindwing elongate-ovate, R_s , M_1 and M_2 nearly parallel, M_3 and Cu_{1a} connate. Posterior tibiae clothed with hairs above.

Distribution: China, Sri Lanka, Australia, New Zealand.

***Locheutis tianmushana* Wang, sp. nov.** (Fig. 1)

Male Wing expanse 16.5 ~ 18.0 mm. Head dark

brown, scales loose and large, with purple shining. Antenna lutescent, slightly shorter or nearly as long as forewing; scape black brown dorsally, flagellum ringed brown. Second segment of labial palpus dark brown, dorsally mixed with white scales at base, thicker; third segment thin and acute, about 1/2 as long as second, greyish white, somewhat yellowish, densely with brown scales at base and distal. Thorax, tegula and forewing lutescent to yellowish white, with scattered brown scales. Costa of forewing black at base; irregular small black spot set in middle and end of cell as well as middle of fold respectively; sometimes an obscure, greyish brown fascia oblique outside extending from costal 4/5 to before tornus; a set of small dots from distal portion of costa along termen to tornus; cilia lutescent. Hindwing greyish brown except for basal 2/3 of costa greyish white; cilia greyish brown. Fore and mid legs black brown to greyish white, tarsi with white spots. Hind leg greyish white, with dense brown scales on outer surface, outer spur brown.

Male genitalia (Fig. 1) Uncus and gnathos absent. Tegumen broad and short, gently arched. Vinculum narrowly banded in shape, sclerotized. Costa obviously separated from valva. Costa arched, sparsely setose, distally narrowed, apex pointed, slightly exceeding end of valva. Valva longer than costa, gradually widened from base to 2/3, distal 1/3 digitate, rounded apically, with long sparse setae; sclerotized longus plate set

basally at upper margin. Juxta developed, anterior margin somewhat straight, basal 1/5 narrowed, distal portion cone-like, with spines. Aedeagus long and slender, gently arched, about 1.5 times as long as valva, sclerotized, distally with short spines and warts.

Female Unknown.

Holotype ♂, Mt. Tianmushan (30.4°N, 119.5°E), Zhejiang Province, alt. 1 140 m, August 17,

1999, collected by LI Hou-Hun. Paratype: 1 ♂, alt. 500 m, August 16, 1999, same collector as holotype.

This species is closely allied to *L. empolaea* Meyrick, but can be distinguished from the latter by male genitalia: distal portion of valva not dilated, with sparse setae; juxta with short spines distally; aedeagus 1.5 times as long as valva, without cornutus.

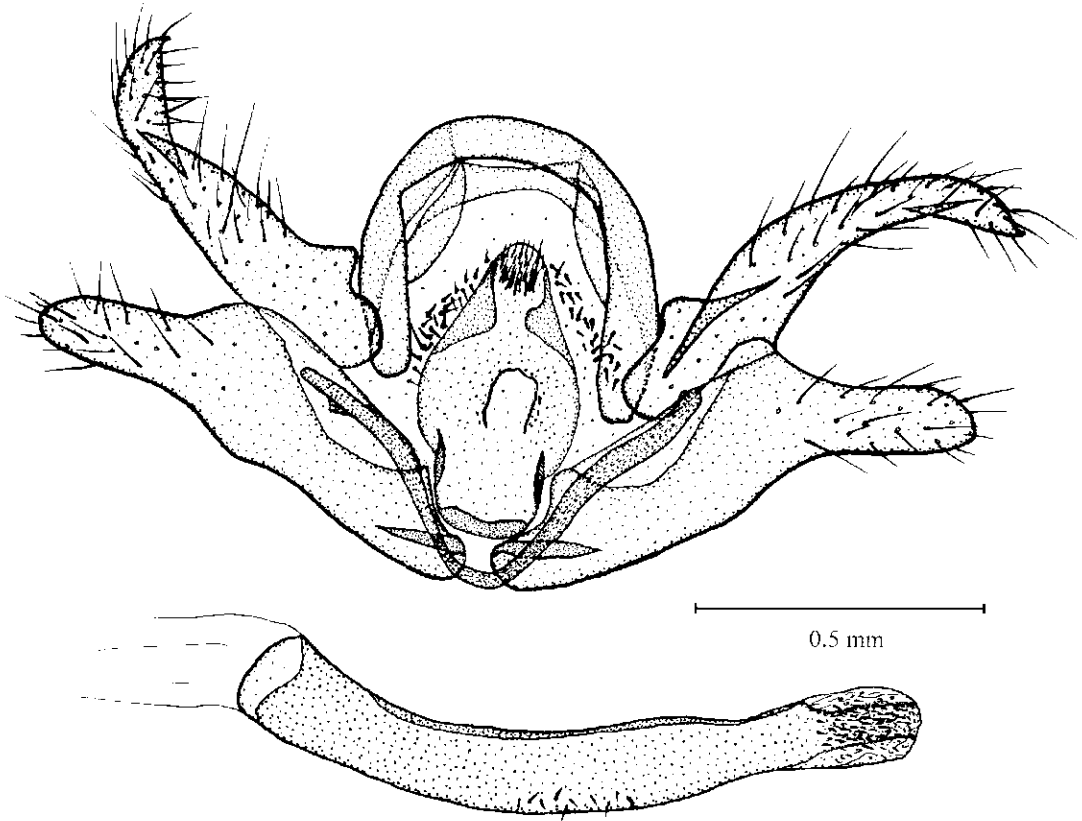


Fig. 1 Male genitalia of *Locheutis tianmushana* sp. nov.

图 1 天目潜织蛾雄性外生殖器

References (参考文献)

- [1] Clarke J F G. Catalogue of the Type Specimens of Microlepidoptera in the British Museum (Natural History) described by Edward Meyrick. Vol 4, London: British Museum (Natural History), 1963. 1 - 521.
- [2] Gaede M. Oecophoridae I. Lepidopterorum Catalogus, 1938, 88:

1 - 208. Meyrick E. Family Oecophoridae. *Genera Insectorum*, 1922, 180: 1 - 244.

- [3] Meyrick E. Exotic Microlepidoptera, Vol 1, 1914 [Reprint: London: Classey E W. 1969. 225 - 256]
- [4] Nielsen E S, Edwards E. D, Rangsi T V eds. Checklist of the Lepidoptera of Australia, Monographs on Australian Lepidoptera. Vol 4, Colling wood: CSIRO, 1996. 1 - 529.

潜织蛾属 *Locheutis* Meyrick 在中国首次报道及一新种记述 (鳞翅目: 织蛾科)

王淑霞

(南开大学生物系, 天津 300071)

摘要: 首次报道了潜织蛾属 *Locheutis* Meyrick 在中国的分布, 并记述了一新种: 天目潜织蛾 *L. tianmushana* sp. nov., 采自浙江省天目山。该新种与 *L. empolaea* Meyrick 相似, 但可通过雄性外生殖器特征区别: 该种抱器瓣端部不膨大, 具稀疏刚毛; 阳茎端基环端部有一堆短刺; 阳茎约为抱器瓣的 1.5 倍长, 端部具微刺和疣突。模式标本保存在南开大学生物系。

关键词: 鳞翅目; 织蛾科; 潜织蛾属; 新种; 中国

中图分类号: Q969.423 **文献标识码:** A **文章编号:** 0454-6296 (2002) S0-0061-03