

A NEW SPECIES OF THE GENUS *CULICOIDES* (*JILINOCOIDES*) (DIPTERA: CERATOPOGONIDAE) FROM THE GUANGXI ZHUANG AUTON. REG., CHINA

LIU Guo-ping¹* and HAO Bao-shan²

1) *Institute of Military Medical Sciences, Shenyang Military District, Shenyang 110034, China;*

2) *Anti-epidemic Team, Guangzhou Military District, Guangzhou, 510500, China*

(Received Apr. 6, 2002; accepted Mar. 5, 2003)

Abstract A new species of *Culicoides* (*Jilinocoides*), *C. (J.) guangxiensis* sp. nov. from Guangxi Zhuang Autonomous Region, China is described. The new species is closely allied to *Culicoides qianweiensis* Yu 1982, but is distinctly different in the presentation of the sensilla coeloconica, sensory pit of the palpus third segment, number of mandible teeth, pale spot on basal portion of wing and r-m pale spot on wing of female. The type specimen is deposited in the Institute of Military Medical Sciences, Shenyang Military District, Shenyang 110034, China.

Key words Diptera, Ceratopogonidae, genus *Culicoides*, subgenus *Jilinocoides*, new species

INTRODUCTION

The genus *Culicoides* are mainly blood-sucking midges with 1210 species recorded worldwide (Borkent and Wirth, 1997). In China 283 species in 11 subgenera have been recorded, of which 31 are of the subgenus *Trithecoides*; 3 are of the subgenus *Sinocoides*; 41 of the subgenus *Avaritia*; 36 of the subgenus *Culicoides*; 95 of the subgenus *Oecata*; 4 of the subgenus *Haemophoructus*; 1 of the subgenus *Nullicella*; 32 of the subgenus *Beltranmyia*; 10 of the subgenus *Monoculicoides*; and 21 species whose subgenus is uncertain (Lee 1988, Liu *et al.* 2002, Liu 2002).

The subgenus *Jilinocoides* Chu 1983 was discovered in China. Diagnostic characters: Female wing with 2 pale spots in marginal portion only, the second costal pale spot covers distal 1/2 of R2 cell. Eyes contiguous, pubescent or bare. The 3rd segment of maxillary palpus with a sensory pit. Antenna with sensorial tufts usually present on segments 3, 11—15. Three well-developed spermathecae present.

Male unknown (Chu 1983). The species of subgenus *Jilinocoides* have been known in China: *C. (J.) dunhuaensis* Chu, 1983; *C. (J.) mihunensis* Chu, 1983; *C. (J.) guangxiensis* sp. nov.

A new species of *Culicoides* (*Jilinocoides*) from China is described as follows.

Culicoides (*Jilinocoides*) *guangxiensis* **sp. nov.** (Fig. 1)

Femal: Wing length 1.15 mm, width 0.50 mm.

Head: Eyes contiguous, bare, front with transverse suturae. Antenna with lengths of flagellar segments in proportion of 22 17 18 19 20 20 19 19 24 26 30 31 45, antennal ratio 1.01, sensilla coeloconica present on segments 3, 11—15. Palpus with lengths of segments in proportion of 8 25 34 13 12, third segment moderately swollen, with sensory pit, palpal ratio 3.09. Proboscis length 190mm, P/H 0.68, mandible 17 teeth.

Thorax: Scutellum with 2 lateral bristles, 2 midscutellar bristles, and 4 accessory hairs. Wing pattern as figured, pale spots and dark markings

* To whom all correspondence and reprint request should be addressed. Email: kqhxj2@163.com

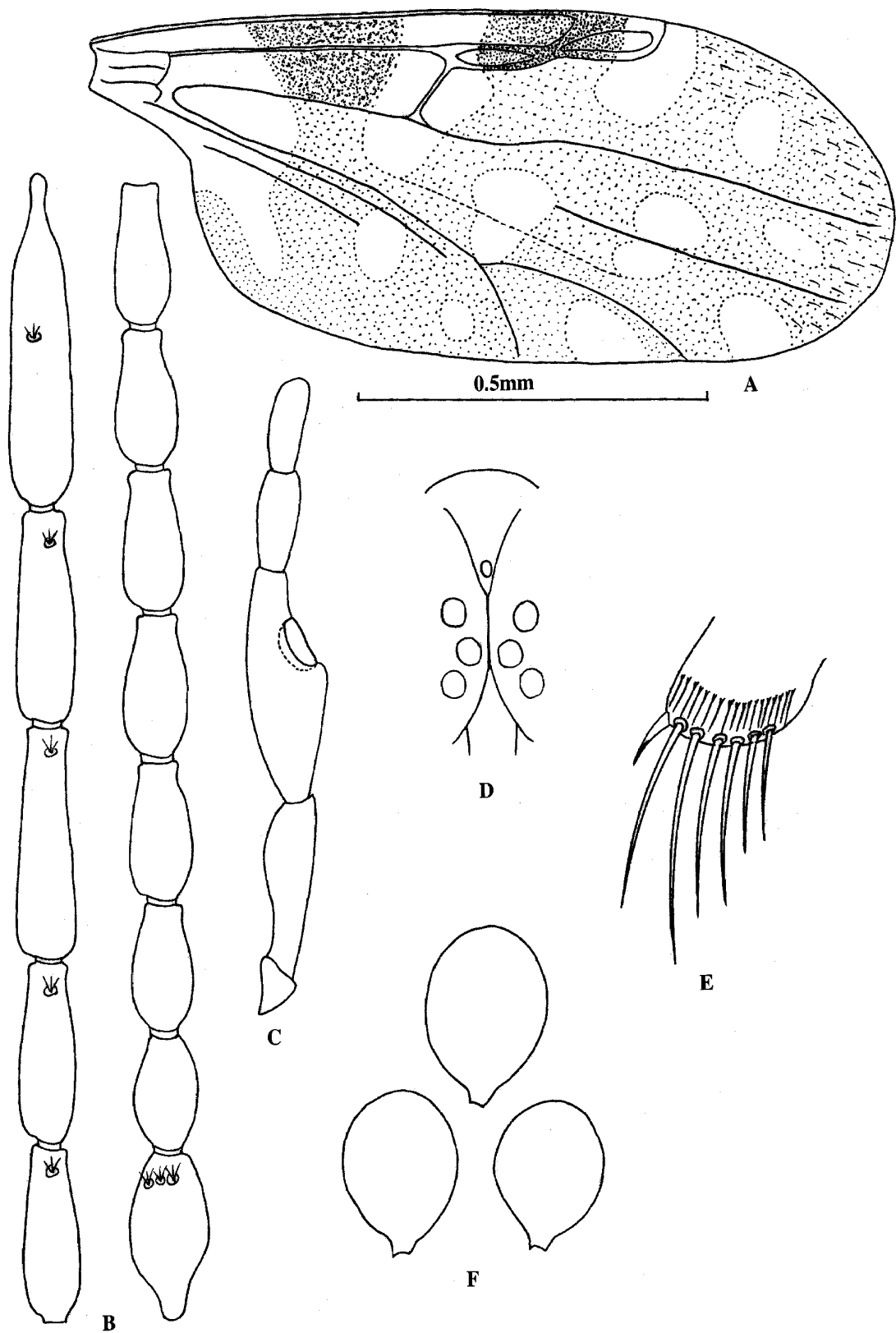


Fig.1 *Culicoides (Jilinocoides) guanxiensis* sp. nov.

A: wing; B: antenna; C: maxillary palp; D: front; E: hindtibal comb; F: spermathecae.

extensive, with a large pale spot on wing base portion. Anterior margin of wing with three pale spots, first pale spot over basal portion of cell R_1 and r-m cross-vein; second pale spot over distal one-third of cell R_2 ; third pale spot in cell R_5 . Two ovoid pale spots in cell M_1 . Three pale spots in cell M_2 . A pale spot in M_4 . Anal cell with two pale spots. Macrotrichia distributed on distal one-third of wing, basal cell without macrotrichia, costal ratio 0.67. Foreleg with lengths of F-T in proportion of 75 74 40 19 13 9 10, TR ratio 2.11; midleg with lengths of F-T in proportion of 95 99 57 21 14 9 10, TR ratio 2.71; hindleg with lengths of F-T in proportion of 90 87 44 25 14 10 11, TR ratio 1.76. hindtibial comb with 6 spines, second from the spur longest.

Abdomen: Spermathecae 3, unequal, $55 \times 44 \mu\text{m}$, $50 \times 43 \mu\text{m}$, $45 \times 40 \mu\text{m}$.

Male: Unknown

Holotype, Pingxing city, Guangxi Zhuang Autonomous Region, China, August 29, 1974, HAO Bao-shan.

The new species is closely allied to *Culicoides qianweiensis* Yu 1982, but differs distinctly in the presentation of the sensilla coeloconica, sensory pit

of palpus third segment, numbers of mandible teeth, pale spot of wing basal portion and r-m pale spot on wing of female.

References

- Borkent, A. and W. W. Wirth 1997 World species of biting midges (Diptera: Ceratopogonidae). New York Bulletin of the American Museum of Natural History **233**: 16-138.
- Lee, T. S. 1988 Diptera: Ceratopogonidae (). Fasc. 38. Economic Insect Fauna of China. 2-3 (in Chinese) Beijing: Science Press
- Liu, G. P., B. S. Hao and Y. X. Yu 2002 Faunal distribution of genus *Culicoides* in China. *Cin. J. Vec. Bio Cont.* **13**(3): 196-199. (in Chinese)
- Liu, G. P. 2002 A new species of *Culicoides* (*Oecata*) (Diptera: Ceratopogonidae) from Heilongjiang province, China. *Entomotaxonomia* **24**(3): 191-193. (in Chinese)
- Chu, F. I. 1983 Two new subgenus and new species of *Culicoides* from China (Diptera: Ceratopogonidae). *Entomotaxonomia* **1**(1): 25-32. (in Chinese)
- Yu, Y. X. 1982 Chapter . The identification of important biting midges of China. In Manual of Important Chinese Insect Vectors of Animal Disease. Beijing: People's Health Publishing House, 178-224. (in Chinese)

广西库蠓属吉林亚属一新种 (双翅: 蠓科)

刘国平¹⁾ 郝宝善²⁾

1) 沈阳军区军事医学研究所, 沈阳 110034 2) 广州军区卫生防疫队, 广州 510500

中国库蠓属吉林亚属已知有 2 种。在广西发现的库蠓属吉林亚属一新种: *Culicoides (Jilinocoides) guanxiensis* sp. nov. 正模, 1974-08-29, 广西壮族自治区凭祥市, 郝宝善采。本新种与犍为库蠓 *Culicoides qianweiensis* Yu 1982 相近似, 但后者触角第 7、9 节有嗅觉器, 触须第 3 节无感觉器窝, 大颚齿 14 枚, 翅基淡斑和径中淡斑的形状与本新种明显不同。模式标本保存在沈阳军区军事医学研究所, 沈阳 110034。

关键词 双翅目 蠓科 库蠓属 吉林亚属 新种