

滇北斑虻属一新种记述

(双翅目: 虻科)

杨建设

(云南省昭通地区卫生防疫站 657000)

许荣满

(军事医学科学院微生物流行病学研究所 北京 100071)

1991年6—8月, 第一作者在丽江州和迪庆州作虻类调查采集, 于迪庆州中甸县纳帕海山发现斑虻属一新种。模式标本除1只副模保存在第一作者所在单位外, 其余均保存在军事医学科学院。

迪庆斑虻 *Chrysops deqenensis* 新种(图1)

雌虻体长: 9—10mm。

头部: 额具灰黄色粉被, 着生灰黄毛和少量黑毛, 额基宽与高略等, 明显大于顶宽; 额胛大, 黑色, 两侧与眼接近, 中央隆起, 背方凹下, 光裸区与单眼区相连接; 单眼黑色, 明显, 周围有黑色光泽的光裸区; 颜与颊黄色; 颜胛圆形, 位于侧颜部分黑色, 位于中颜部分棕

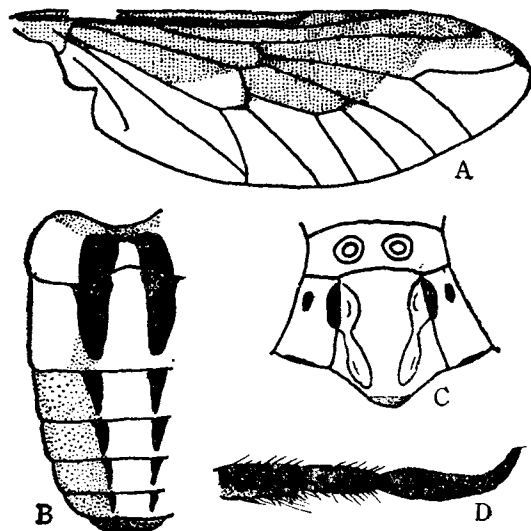


图1 迪庆斑虻 *Chrysops deqenensis* sp. nov. (♀)

A. 翅; B. 腹背; C. 颜面; D. 触角。

色;中颜前方口缘部分覆薄粉,1只副模在两侧具不明显棕色光裸区;上侧颜具小块棕黑色光裸区,颊胛呈窄条形黑色光裸区;触角黑色,柄节和梗节外侧腹方少许及内侧腹方大部带棕色,柄节略长于梗节,鞭节黑色,约等于柄节和梗节之和;下颚须暗棕色,着生浅黄色毛和少量黑色。

胸部:背板黑色,覆灰黄色毛,盾片有4列灰黄色纵条:侧板、腹板和足基节灰黑色,具黄色毛;足股节和胫节深棕色,黄毛与黑毛混杂,跗节棕黑色;翅横带不达翅后缘,翅端翅向端部渐细,略超过R,脉端部;平衡棒棕黑色,球部黑色。

腹部:背板灰黄色,向尾端色渐变深,中央具2列黑斑,背板I前缘黑色,中央1对黑斑达该节后缘,II—VI节黑斑不达后缘;腹板灰黑色,覆黄色粉被和黄色毛。

雄虻:未详。

正模♀,云南省迪庆州中甸县纳帕海山3400m,东经99.5°,北纬28°,1991.VII.21杨建设采;副模3♀♀,采集地同正模,1991.VII.21—23。

本新种属于三角斑虻组 *Chrysops designata* group^[1,2,3,4],接近副三角斑虻 *Chrysops paradesignata* Wang, 1977^[5],但本新种翅横带不达翅后缘,翅第I基室全暗,第II基室基部大部暗色,仅端部1/3透明。

参 考 文 献

- 1 Chen Sicien, Quo F. On the opisthacanthous Tabanidae of China. *Chinese Journal of Zoology*, 1949, 3:1—10.
- 2 Philip C B. Further notes on Far Eastern Tabanidae (Diptera) VI. New and little-known species from the Orient and additional records, particularly from Malaysia. *Pac. Ins.* 1979, 21(2—3):179—202.
- 3 Ricardo G. New species of Tabanidae from the Oriental Region. *Ann. Mag. Nat. Hist. ser.* 1913, 8, 9:542—547.
- 4 王遵明. 横断山地区虻科记述. *动物学集刊*, 1988, 6: 263—271.
- 5 王遵明. 华南地区吸血虻类记略. *昆虫学报*, 1977, 20(1): 106—118.

A NEW SPECIES OF CHRYSOPS FROM NORTHERN YUNNAN, CHINA (DIPTERA: TABANIDAE)

Yang Jianshe

(*Healthy and Anti-Epidemic Station of Zhaotong prefecture, Yunnan Province 657000*)

Xu Rongman

(*Institute of Microbiology & Epidemiology, 23(A) Qilizhuang Road, Fengtai District Beijing 100071*)

Abstract *Chrysops degenensis* sp. nov. (fig. 1)

♀, 9—10mm. Frons grayish yellow, widened below; callus black, strongly convex, nearly reaching eyes; facial calli black outside, brown inside. Bare spots black, small, on upper parafacial and genal. Antennae black. Palpi dark brown. Thorax black, with four yellowish stripes. Legs dark brown. Crossband of wings reaches not to hind margin of wing. Abdomen grayish yellow, tergite 1 to 6 with two median black spots.

Holotype ♀, Zhongdian Co. (99.5°E, 28°N) Yunnan Province, 3400m, July 21, 1991, collected by Yang Jian-she. Paratypes 3 ♀ ♀, same as holotype. Types deposited in the Institute of Microbiology and Epidemiology, but one paratype in Health and Anti-Epidemic Station of Zhaotong, Yunnan Province.

This new species related to *Chrysops paradesignata* Wang, 1977, but distinguished from the latter by the cross-band of wings reaching not to the hind margin of wing.