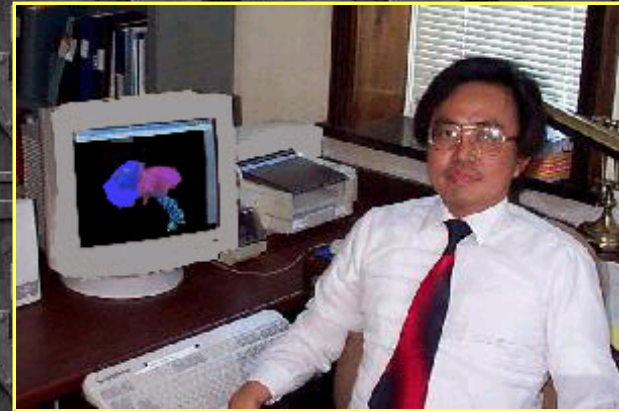


WELCOME TO THE King H. YANG HOME PAGE

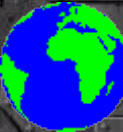
TEACHING

- [BME 5110](#) Vehicle Safety Engineering I
- [BME 5120](#) Vehicle Safety Engineering II
- [BME 5210](#) Musculoskeletal Biomechanics
- [ME 5035](#) Applications of Finite Element Analyses in Design and Manufacturing
- [ME 5040](#) Finite Element Methods I
- [ME 5160](#) Musculoskeletal Biomechanics
- [ME 7020](#) Finite Element Methods II
- [ME 8020](#) Crashworthiness and Occupant Protection in Transportation Systems

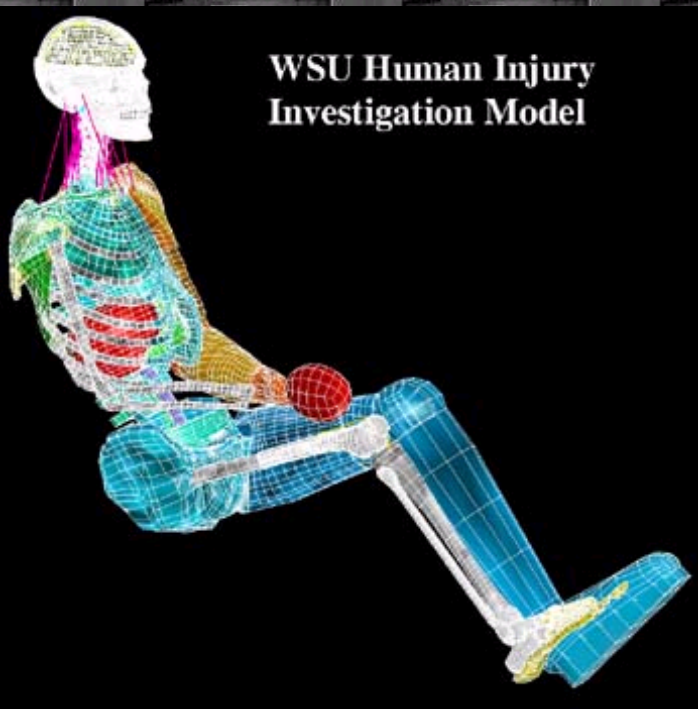


RESEARCH

[Recent Publication](#)



Modeling the Human Body



**WSU Human Injury
Investigation Model**

- [Brain](#)
- [Head & Neck](#)
- [Thorax](#)
- [Abdomen](#)
- [Spine](#)
- [Pelvis & Hip](#)
- [Knee](#)
- [Ankle](#)

Automotive Safety and Crash Dummy Modeling

- [Effects of Airbag Folding Patterns](#)
- [Passenger Side Airbag Modeling](#)

[SID Dummy Model and Validation](#)



[BIOSID Dummy Model and Validation](#)

[Hybrid III Dummy Model and Validation](#)

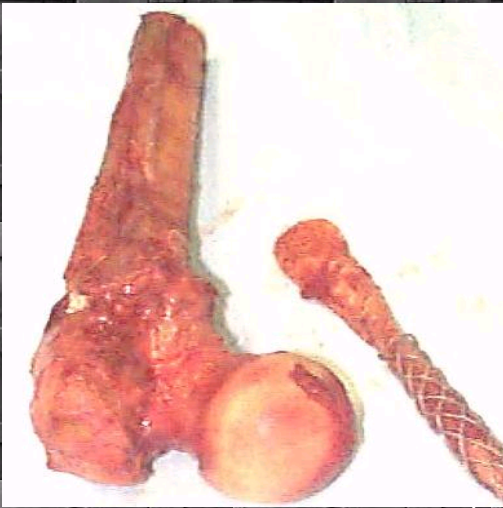
Orthopaedic Biomechanics

[Seat comfort and spinal load](#)

[Rear-end impact neck injury mechanism](#)

[Hip fracture mechanism](#)

[Head protection in sports event](#)



[Click here for Copyright information](#)

Send e-mail to: [King H. Yang, Ph.D.](#)

Professor : Mechanical Engineering & Biomedical Engineering
Wayne State University
818 W. Hancock
Detroit, Michigan 48202
2208 Bioengineering Center
Phone: (313) 577-0252