

About Us

[Welcome](#)
[Overview](#)
[History](#)
[News](#)
[Publications](#)
[Industry Partnerships](#)
[Facilities](#)
[Faculty Positions](#)
[Postdoctoral Positions](#)
[WeldonBME Blog](#)
[Contact Us](#)

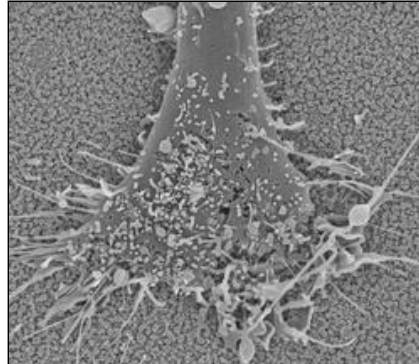
Information For...

[Alumni & Friends](#)
[Current Students](#)
[Potential Partners](#)
[Potential Students](#)

Text Size: Print-Friendly: Share this Page: 
 Shortcut URL:
<http://eng.purdue.edu/jump/455e35>
PURDUE > ENGINEERING > BIOMEDICAL ENGINEERING > ABOUT US > BME NEWS > **HOMEPAGEFEATURES**

Nanotechnology Journal Spotlights Purdue Research

A recent paper by Purdue BME researchers Youngnam Cho, Riyi Shi, Albena Ivanisevic and Richard Borgens has been selected as the cover feature article for the prestigious journal, Nanotechnology.



The article, entitled "Mesoporous Silica Nanosphere-based Nerve Growth Factor Delivery System Using an Electrically Conducting Polymer," details research work being performed at the Center for Paralysis Research on Purdue's West Lafayette campus.

In this study, a mesoporous silica nanoparticle-based nerve growth factor delivery system has been developed and evaluated for efficacy in promoting neurite extension and growth. Such a site-specific drug delivery in the vicinity of a biomedical implant would enhance the performance of the incorporated drugs and also reduce the systemic exposure of those drugs, likely reducing or preventing toxicity and other unwanted side effects. The possible therapeutic applications of such a methodology could consequently result in the development of brain-controlled devices, vision implants, nerve function modulators, and spinal cord stimulators, to name a few future possibilities.

BME Newsletters[December 2009](#)[November 2009](#)[July 2009](#)[January 2009](#)[December 2008](#)[September 2008: Special Edition](#)[July 2008](#)[June 2008](#)[February 2008](#)[November 2007](#)[December 2007](#)[September 2007](#)[July 2007](#)[May 2007](#)[October 2006](#)[September 2006](#)[July 2006](#)[June 2006](#)[April 2006](#)[January 2006](#)[November 2005](#)**BME News Archive**[Year of 2000](#)[Year of 2001](#)[Year of 2002](#)[Year of 2003](#)[Year of 2004](#)
[Purdue Homepage](#) | [Purdue Search](#) | [Campus Map](#) | [Purdue Directories](#)

Copyright © 2010, Purdue University, all rights reserved.

An equal access/equal opportunity university

[Why Secure Web Services? \(SSL\)](#)
webmaster-bme@ecn.purdue.edu