



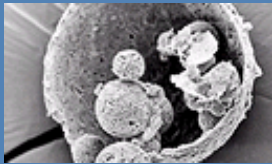
HOME	ACADEMICS	PEOPLE	RESEARCH	NEWS	EVENTS	JOBS	CONTACT
----------------------	---------------------------	------------------------	--------------------------	----------------------	------------------------	----------------------	-------------------------

Welcome to BME

We are building research and educational programs around a vision that a quantitative understanding of the human body can be used as a foundation for the rational design of therapies, molecules, devices, and diagnostic procedures to improve human health.

More [about us](#)

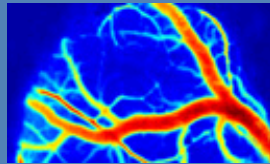
[Research Images](#) Right: Speckle Blood Flow ▶



Biomaterials & Drug Delivery



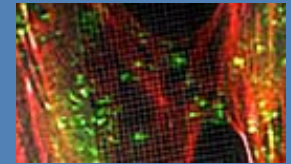
Biomedical Mechanics



Imaging & Instrumentation



Nanobiotechnology



Tissue Engineering

CURRENT EVENTS

The Meniscus: Is it just a pain in the knee?

[More Info](#)

CURRENT NEWS

Moonsoo Jin Receives Transformative R01 Grant

[Full Story](#)

DEPARTMENT PUBLICATIONS

- ▶ [BME Fall 2007 Newsletter \(PDF\)](#)
- ▶ [BME Fall 2008 Newsletter \(PDF\)](#)
- ▶ [BME Fall 2009 Newsletter \(PDF\)](#)
- ▶ [Connecting with Cornell](#)

RESEARCHER PROFILES



Dr. Dan Luo strives to establish Bioengineering as a "biology-based core engineering discipline by melding biology with engineering."
[Researcher Profiles](#)

GRADUATE STUDENT PROFILES



Christine Tan, BME PhD student, currently works with Professor Harold Craighead.
[Student Profiles](#)

BME QUICK LINKS

- ▶ [About Us](#)
- ▶ [Our Vision and Mission](#)
- ▶ [How to Apply for Admission](#)
- ▶ [Giving Opportunities \(PDF\)](#)
- ▶ [Cornell Engineering](#)
- ▶ [Cornell University](#)