

Search ASUNews

Go

FOR THE MEDIA

News Releases
Image Downloads
Media Contacts
ASU Facts
Visiting Campus
Video Archive

ASU NEWS

University
Arts / Culture
Business
Engineering
Law
Humanities
Health care
Research
Science
Administration
Faculty / Staff
Students
Alumni
Community
Sports
Photo Gallery
More Categories

ABOUT NEWS

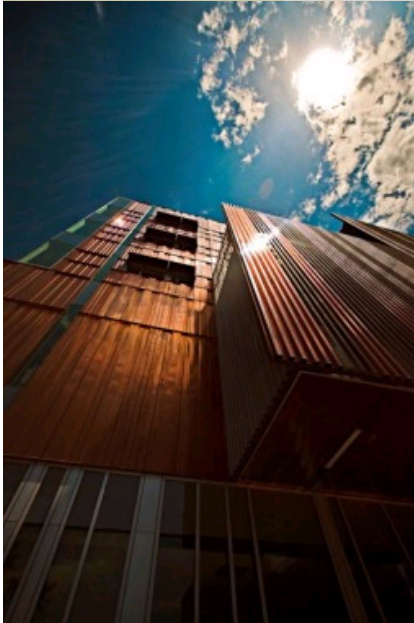
Site Contact
News Staff
ASU Insight
Other
Publications

SUBSCRIPTIONS

E-mail and Feeds

ASUNews

November 10, 2009

 Print this
  Newsfeeds
[Home](#)

The new five-story, 84,000-square-foot College of Nursing and Health Innovation building.

New era dawns for College of Nursing and Health Innovation

The College of Nursing and Health Innovation at Arizona State University dedicated its new building today, at a time when it is experiencing the most significant changes in its 52-year history. Change has impacted every part of the college – faculty and staff, leadership, curriculum, name, strategic mission, and facilities.

“Change is inevitable everywhere today, and without change, there is no innovation,” Dean Bernadette Melnyk said. “Most people fear change, but not here at ASU. We see change as a huge opportunity for innovation and building strength. Our recent changes mark the dawn of a new era for our college and multiply opportunities for students, faculty and staff.”

An impressive new five-story, 84,000-square-foot building is the most visible of the changes in the college. Construction of the building was completed in 16 months in order to open for the

Fall semester.

“This expansion provides the best facilities we have ever had and helps facilitate the integration of new programs into our college,” said Melnyk. “The additional building provides much needed space to continue to offer the highest quality of educational programs and the most cutting-edge research to guide best practices, as well as the opportunity to continue to launch innovative initiatives that will improve the health of Arizona residents.”

Melnyk praised the City of Phoenix, general contractor DPR Construction, architectural firm SmithGroup and the ASU implementation team for working together to build a signature building on budget and on schedule. The City of Phoenix and ASU partnered to build the campus and the new nursing building as part of a city bond issue that voters passed in 2006.

Serving as the northern gateway to the new ASU Downtown Phoenix Campus, the glass and copper structure includes a 200-seat auditorium, classrooms, student facilities, faculty offices and research space. The building includes several sustainable elements and outside public spaces that provide shaded green areas with a water feature.

As a part of ASU's restructuring in the Spring of 2009, several health-related programs from the former School of Applied Arts and Sciences at the Polytechnic Campus were merged into the ASU nursing college. The [Exercise and Wellness](#), [Nutrition](#), and Health Sciences programs became part of the college. As a result, the name of the college changed from the College of Nursing & Healthcare Innovation to the College of Nursing and Health Innovation to reflect its expanded mission.

“Our mission has been broadened to include other health-focused disciplines,” Melnyk said. “The merger of these departments and programs allows us to accelerate inter-professional education and initiatives that will result in outstanding academic programming for our students, innovative transdisciplinary research and more comprehensive health services that will benefit the public.”

The consolidation increases the college's current undergraduate enrollment by nearly 6 percent to 2,623, compared to 2008, and graduate/doctoral enrollment by more than 74 percent to 421 for a total of 3,044 students.

Enrollment in the newly integrated health promotion programs has grown by 39 percent to 932, compared to 2008. Current enrollment in the nursing programs is 2,050 due to an increase in graduate and doctoral students.

“The college serves as a new national model for transdisciplinary collaboration, education, research and clinical practice while continuing to produce the highest caliber of nurses and health professionals who will transform healthcare and promote the highest level of health for the community, nation and globe,” Melnyk said. “Our new building and new education and research programs enable the College of Nursing and Health Innovation to expand its focus on improving the

Related Video

[New downtown building for College of Nursing and Healthcare Innovation](#)

[College of Nursing and Health Innovation dedicates new building](#)

health and lifestyles of Arizonans and the nation.”

Terry Olbrysh, Terry.Olbrysh@asu.edu
(602) 496-0877
College of Nursing and Health Innovation

Share this story:  [Email this page](#)

