

[Home](#)[News](#)[News Archive](#)[Exchange](#)[Podcasts](#)[Site map](#)[Contact us](#)[Press Up](#)[Expertise](#)[Flu Advisory](#)

RESOURCES

[Full Contact List](#)[Facts & Figures](#)

NOTIFICATION SIGN-UP

Receive notifications when new articles are published

[Sign-up](#)[Home](#) > [News](#) > Largest mass extinction linked to 21st century lung cancer epidemic

NEWS ARTICLE



Largest mass extinction linked to 21st century lung cancer epidemic

Fri, 20 Nov 2009 11:49:00 GMT

The geologic conditions that very nearly annihilated life 250 million years ago are still killing people today.

Parts of Xuan Wei County in Yunnan Province in China have the world's highest known death rates from lung cancer in non-smoking women. For thirty years the region, which uses locally mined coal for domestic cooking and heating, has been the focus of intense scientific research to establish a cause.

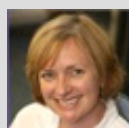
Now a team of experts led by The University of Nottingham have discovered that high concentrations of fine grained silica found in the coal which is produced from the uppermost Permian coal seam, correlate directly with lung cancer mortality rates. The results of their two year study, funded by UK Office of Science and Innovation through the Royal Society, have been published in the Journal Environmental Science & Technology.

[Click here for full story](#)



Story Credits

More information is available from Dr David Large on +44 (0)115 951 4114 david.large@nottingham.ac.uk



Lindsay Brooke - *Media Relations Manager*

Email:

lindsay.brooke@nottingham.ac.uk

Phone: +44 (0)115 951 5751

Location: King's Meadow Campus

FURTHER INFORMATION

Related Articles

[Launch for joint UK-China research lab on biomimetics](#)

[Revolutionising the diagnosis of serious disease](#)

[Experts put Chinese medicine in the spotlight](#)

[Delays in UK child brain tumour diagnosis](#)

[Toddler's fight against brain cancer inspires £5m funding drive](#)

[Daylight could help control our weight](#)

[Nottingham scientists commissioned for urgent swine flu research](#)

[Shanghai visiting professorship for pharmacy researcher](#)

Resources

No related links.


Tag Cloud

Teaching and Learning
Faculty of Business, Law and Social Sciences
Faculty of Medicine and Health Sciences Local & Community student

Research Corporate
International business
Faculty of Science
Awards/Prizes public health
China Faculty of Engineering environment

[Home](#) | [Site Map](#) | [Contact](#) | [University of Nottingham](#)

University of Nottingham Communications Office, King's Meadow Campus, Lenton Lane, Nottingham NG7 2NR
Phone: +44 (0)115 951 5765 Fax: +44 (0)115 951 5733

Web design by:  Internova