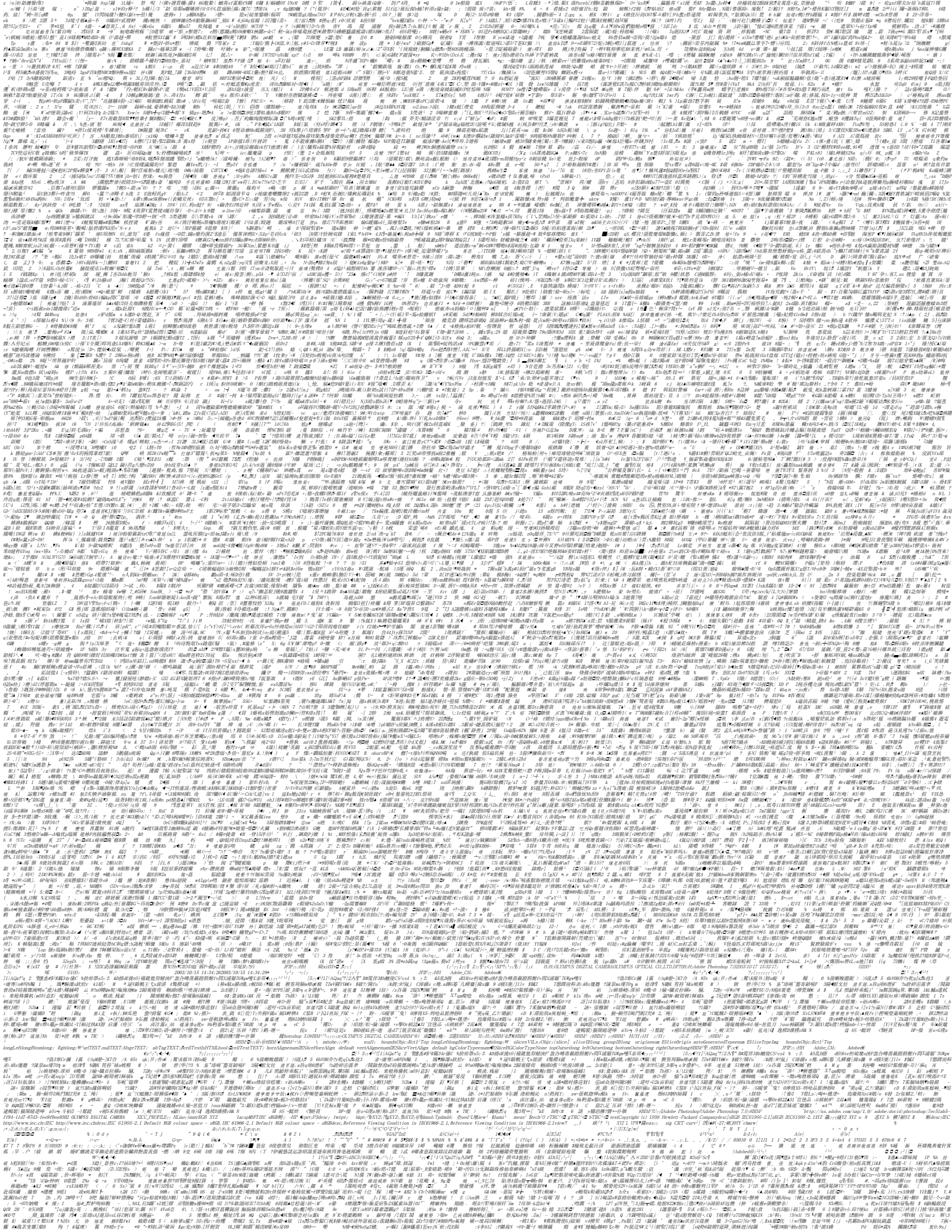




... (The page contains a dense grid of small, illegible text fragments, likely a scan of a document with very small font or a corrupted image. The text is too small to transcribe accurately.)



... (The page contains dense, repetitive text, likely a scan of a document with significant noise or bleed-through. The text is mostly illegible due to the quality of the scan and the density of the characters.) ...





Main body of the document containing dense text and code blocks. The text appears to be a technical document or a list of items, possibly related to a project or a database. It includes various alphanumeric strings, some of which are highlighted in bold or italicized. There are also sections that look like code snippets or data tables.





... 2025年1月1日 ... 2025年1月1日 ... 2025年1月1日 ...

... (The page contains a dense grid of small text blocks, likely a list of items or a detailed index, which is mostly illegible due to the low resolution and small font size.) ...



