

[Quick Links](#)

Research Areas

- [Biological Sciences](#)
- [Computer & Information Science & Engineering](#)
- [Education and Human Resources](#)
- [Engineering](#)
- [Environmental Research & Education](#)
- [Geosciences](#)
- [International & Integrative Activities](#)
- [Mathematical & Physical Sciences](#)
- [Social, Behavioral & Economic Sciences](#)

Learning Resources

- [Film, TV, Exhibits & More!](#)
- [Slideshows & Photo Galleries](#)
- [Classroom Resources](#)
- [Funding for Research on Learning in Formal & Informal Settings](#)

Funding & Awards

Funding Info

- [Search Funding Opportunities](#)



National Science Foundation
WHERE DISCOVERIES BEGIN

- [Browse Funding Opportunities A-Z](#)
- [Recent Funding Opportunities](#)
- [How to Prepare a Funding Proposal](#)
- [Grant Proposal Guide](#)
- [Submit a Proposal to FastLane](#)

Award Info

- [Managing Awards](#)
- [Award & Administration Guide](#)
- [Search Awards](#)
- [Award Statistics \(Budget Internet Info System\)](#)

News & Discoveries

- [Recent News](#)
- [Recent Discoveries](#)
- [Multimedia Gallery](#)
- [Special Reports](#)

Contact Us

- [Staff Directory](#)
- [Organization List](#)
- [Visit NSF](#)
- [Work at NSF](#)
- [Do Business with NSF](#)
- [Press](#)
- [Inspector General Hotline](#)
- [How Do I...?](#)

The National Science Foundation
4201 Wilson Boulevard,
Arlington,
Virginia 22230, USA



- [Home](#)
- [Funding](#)
 - [Search Funding Opportunities](#)
 - [Browse Opportunities A-Z](#)
 - [Recent Opportunities](#)
 - [Due Dates](#)
 - [Preparing Proposals](#)
 - [Policies & Procedures](#)
 - [Merit Review](#)
 - [Interdisciplinary Research](#)
 - [Transformative Research](#)
 - [About Funding](#)
- [Awards](#)
 - [About Awards](#)
 - [Managing Awards](#)
 - [Policies & Procedures](#)
 - [Award Conditions](#)
 - [Search Awards](#)
 - [Presidential & Honorary Awards](#)
 - [Award Statistics \(Budget Internet Info System\)](#)
- [Discoveries](#)
 - [Discoveries Home](#)
 - [Arctic & Antarctic](#)
 - [Astronomy & Space](#)
 - [Biology](#)
 - [Chemistry & Materials](#)
 - [Computing](#)
 - [Earth & Environmental Science](#)
 - [Education](#)
 - [Engineering](#)
 - [Mathematics](#)
 - [Nanoscience](#)
 - [People & Society](#)
 - [Physics](#)
 - [Search Discoveries](#)
 - [About Discoveries](#)
- [News](#)
 - [News Home](#)
 - [For News Media](#)
 - [Multimedia Gallery](#)
 - [Special Reports](#)
 - [News from the Field](#)
 -

- [Speeches & Lectures](#)
- [NSF Current Newsletter](#)
- [NSF-Wide Investments](#)
- [News Archive](#)
- [Search News](#)
- [Publications](#)
 - [Publications Home](#)
 - [Search Publications](#)
 - [Obtaining Publications](#)
- [Statistics](#)
 - [NCSES Home](#)
 - [NCSES Data](#)
 - [NCSES Publications](#)
 - [NCSES Surveys](#)
 - [NCSES Topics](#)
 - [Search NCSES](#)
 - [About NCSES](#)
- [About NSF](#)
 - [About NSF](#)
 - [History](#)
 - [Visit NSF](#)
 - [Contact NSF](#)
 - [Staff Directory](#)
 - [Organization List](#)
 - [Career Opportunities](#)
 - [Contracting Opportunities](#)
 - [NSF & Congress](#)
 - [Budget](#)
 - [Performance Assessment Info](#)
 - [Partners](#)
 - [Broadening Participation/Diversity](#)
 - [Office of Diversity & Inclusion](#)
- [Fastlane](#)

[News](#)



[News](#)

[News From the Field](#)

[For the News Media](#)

[Special Reports](#)

[Research Overviews](#)

[NSF-Wide](#)

[Investments](#)

[Speeches & Lectures](#)

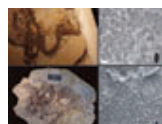
[NSF Current](#)

Email  Print 

News From the Field

Revision to rules for color in dinosaurs suggests connection between color and physiology

February 12, 2014



New research revising the rules on deciphering color in dinosaurs may provide a tool for understanding the evolutionary emergence of flight and changes in dinosaur physiology. While surveying melanosome shape in fossil and extant specimens, a research team unexpectedly

- [Newsletter](#)
- [Multimedia Gallery](#)
- [News Archive](#)

News by Research Area

- [Arctic & Antarctic](#)
- [Astronomy & Space](#)
- [Biology](#)
- [Chemistry & Materials](#)
- [Computing](#)
- [Earth & Environment](#)
- [Education](#)
- [Engineering](#)
- [Mathematics](#)
- [Nanoscience](#)
- [People & Society](#)
- [Physics](#)

discovered that ancient maniraptoran dinosaurs, paravians, and living mammals and birds uniquely shared the evolutionary development of diverse melanosome shapes related to color. [Full Story](#)

Source

University of Texas at Austin

The National Science Foundation (NSF) is an independent federal agency that supports fundamental research and education across all fields of science and engineering. In fiscal year (FY) 2014, its budget is \$7.2 billion. NSF funds reach all 50 states through grants to nearly 2,000 colleges, universities and other institutions. Each year, NSF receives about 50,000 competitive requests for funding, and makes about 11,500 new funding awards. NSF also awards about \$593 million in professional and service contracts yearly.

[Get News Updates by Email](#)

Useful NSF Web Sites:

NSF Home Page: <http://www.nsf.gov>

NSF News: <http://www.nsf.gov/news/>

For the News Media: <http://www.nsf.gov/news/newsroom.jsp>

Science and Engineering Statistics:

<http://www.nsf.gov/statistics/>

Awards Searches: <http://www.nsf.gov/awardsearch/>

Email  Print 



[Take our Customer Satisfaction Survey](#)

[↑ Top](#)

- [Awards](#)
- [Discoveries](#)
- [News](#)
- [Publications](#)
- [Statistics](#)
- [About NSF](#)
- [Fastlane](#)

- [Research.gov](#)
- [USA.gov](#)
- [National Science Board](#)
- [Recovery Act](#)
- [Budget and Performance](#)
- [Annual Financial Report](#)

- [Web Policies and Important Links](#)
- [Privacy](#)
- [FOIA](#)
- [NO FEAR Act](#)
- [Inspector General](#)
- [Webmaster Contact](#)
- [Site Map](#)



The National Science Foundation, 4201 Wilson Boulevard, Arlington, Virginia 22230, USA Tel: (703) 292-5111, FIRS: (800) 877-8339 | TDD: (800) 281-8749

- [Text Only Version](#)
- [View Mobile Site](#)

