

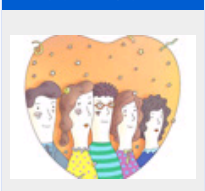
▶ 无车日活动 ▶ 会议信息
▶ 交通黄页 ▶ 人才招聘

搜索

编委团队



我们的团队



2009年第1期



城市轨道交通客流预测专题

2008年第6期



步行与自行车交通专题

过刊检索

2009	2008	2007
2006	2005	2004
2003	2002	2001
2000	1999	

内容

CEPA对深圳市货运交通格局的影响研究 点击数: 550

[点击查看PDF全文](#)

文章编号: 1672-5328 (2005) 01-0028-04

胡文铎 潘竞
(深圳市宝安交通规划研究中心, 深圳 518001)

摘要: CEPA是一个内地与香港之间的经贸协议, 对于深圳市有直接的影响。着重分析了CEPA协议的签署对深圳市货运交通的影响。针对交通特征提出了建立客、货分流的路网体系, 以解决海港、空港、口岸货运的交通压力。

关键词: CEPA; 深圳市; 交通规划; 货运交通; 路网体系

Research on Impact of Freight Transportation Pattern of Shenzhen City by CEPA

HU Wenduo, PAN Jing
(Transport Planning Research Center of Bao'an in Shenzhen city, Shenzhen 518001, China)

Abstract: Shenzhen city is affected directly by CEPA, which is a economic and trade agreement between Hong Kong and hinterland of China. As the subscription of CEPA, the impact on Shenzhen freight traffic structure is analysed. To reduce the seaport, airport and land port's traffic pressure, a dividing road net system is set up, which the passenger is separated from freight is advanced.

Keywords: CEPA; Shenzhen city; transport planning; freight transportation; road network system