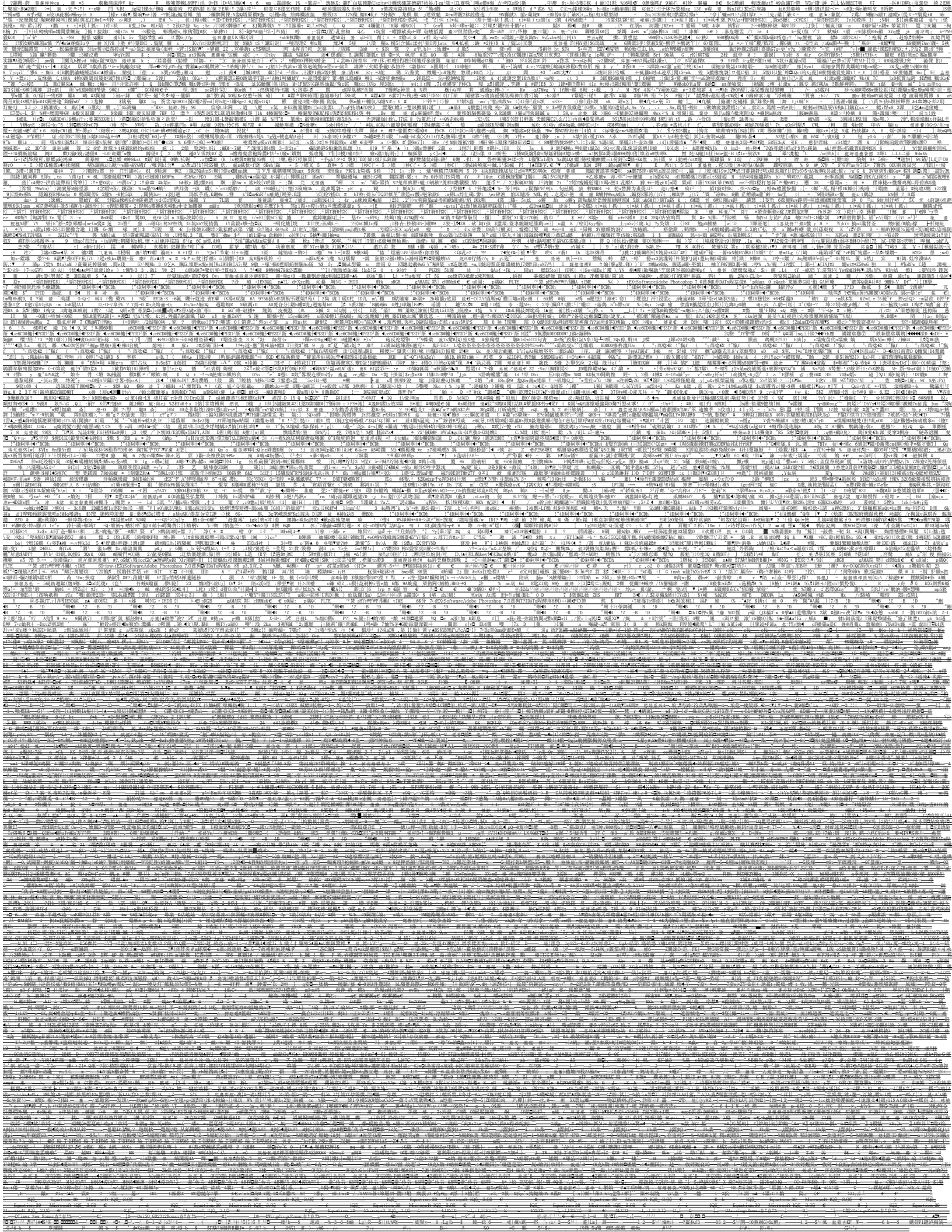
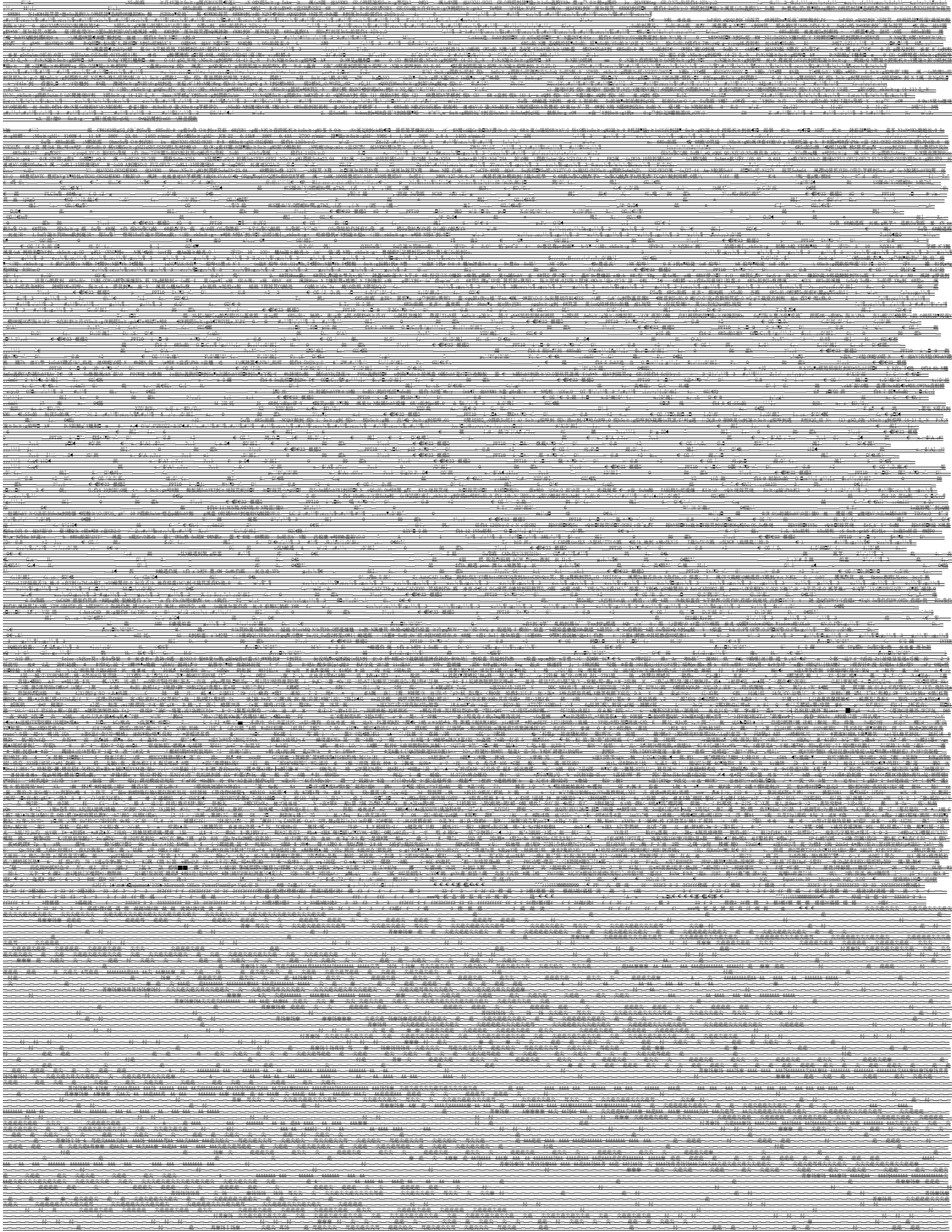


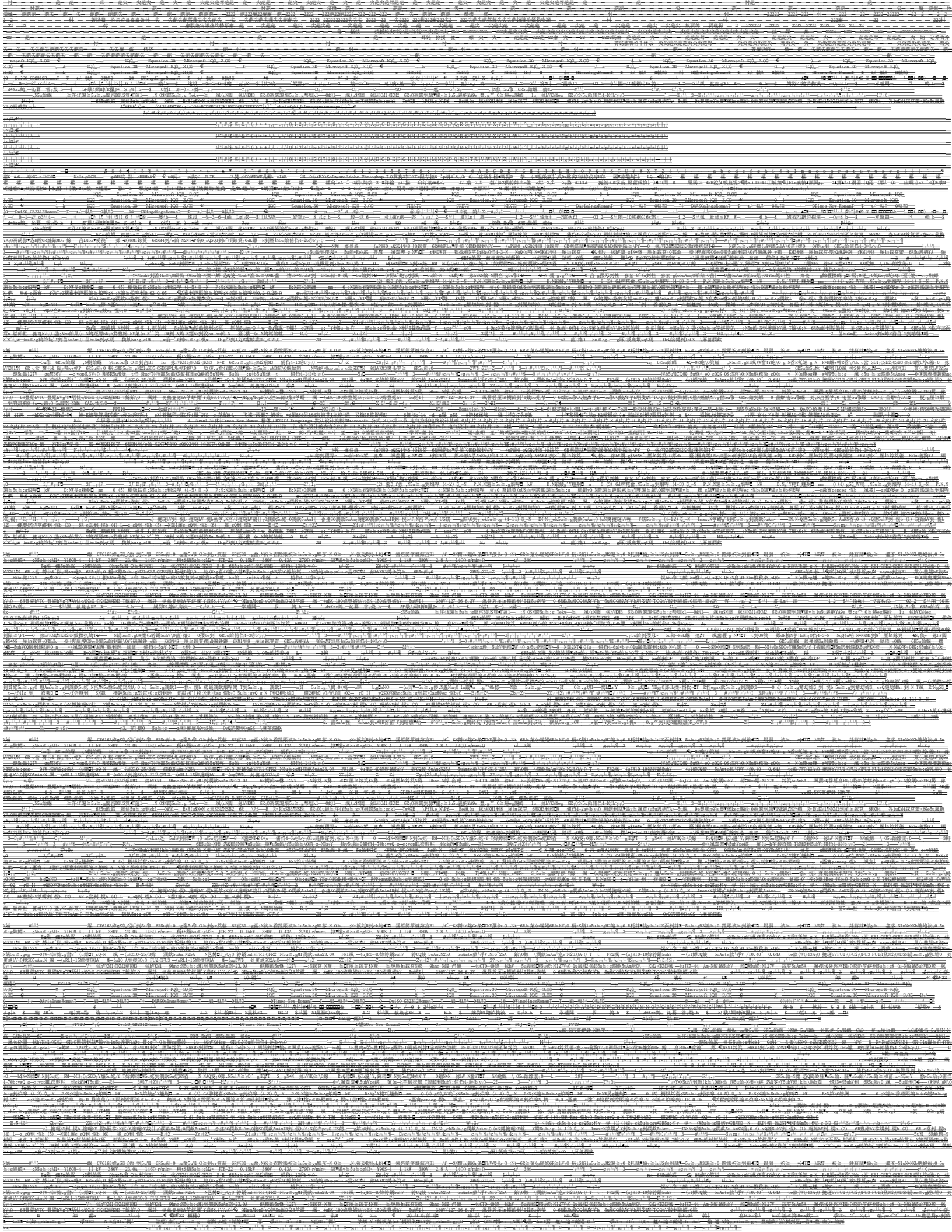


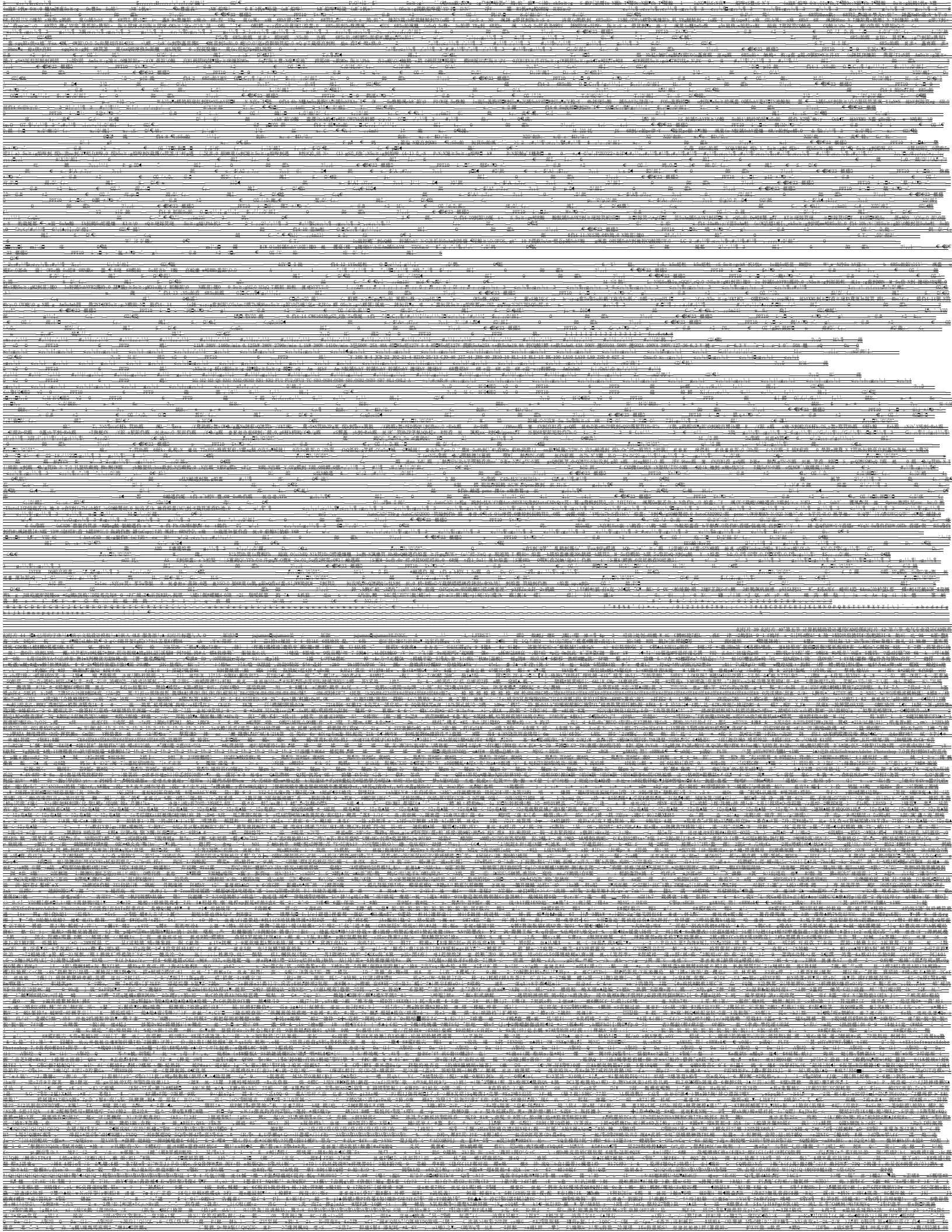
... (The page contains dense, repetitive text, likely a scan of a document with significant noise or artifacts. The text is mostly illegible due to the quality of the scan and the density of the characters.) ...

... (The page contains a dense grid of small text, likely a dictionary or a list of terms, which is mostly illegible due to the low resolution and small font size. The text appears to be organized in columns and rows, with some larger characters or symbols interspersed.) ...









Microsoft Word document content, appearing as a dense grid of text and symbols, possibly representing a corrupted or heavily redacted file. The text is mostly illegible due to the high density and potential encoding issues.