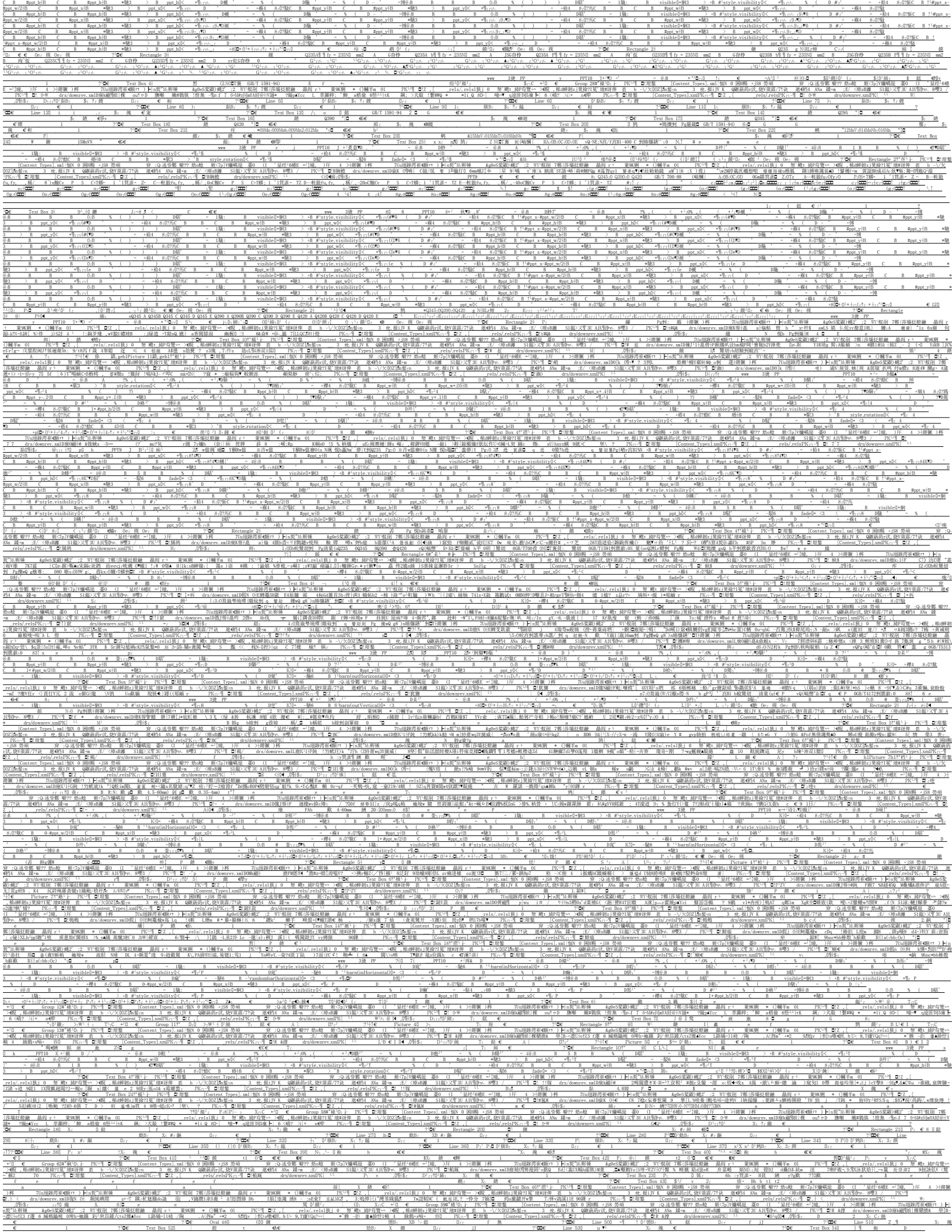


Main body of the document containing dense text, likely a list of items or a detailed report. The text is highly repetitive and appears to be a scan of a document with many lines of small text.

Blank page with faint grid lines.

... (The page contains a dense grid of small, illegible text, likely a technical document or code page. The content is too small to transcribe accurately.) ...



Microsoft Word document content. The text is a dense, repetitive sequence of characters, likely a test or a corrupted document. It contains various symbols, including letters, numbers, and special characters, arranged in a structured but highly repetitive pattern. The content is mostly illegible due to the high density and repetition of characters.