

# Sustainability expert leads pursuit for improved social responsibility in global mining sector

24 April 2012

International expert Dr Saleem Ali has been appointed the Director of the Centre for Social Responsibility in Mining (CSRМ), at The University of Queensland (UQ).

Named "Young Global Leader" at the World Economic Forum 2011, Dr Ali is recognised for his extensive research and consulting experience in environmental health and social issues.

"Dr Ali' s arrival will enhance our ability to introduce change across the global mining sector and enriches our focus on industry leadership and collaboration," the Director of UQ's Sustainable Minerals Institute, Professor Chris Moran said.

The CSRМ is one of seven research centres within the Sustainable Minerals Institute (SMI) at UQ.

It has contributed significantly to the building of social competency in the mining industry through research, teaching and consulting since 2001.

Dr Ali said: " I look forward to joining the CSRМ team in spearheading high quality, independent research that helps the mineral sector contribute towards sustainable development and positive community engagement.

"As new resource-rich markets are fast emerging and under increased pressure to meet global demands for minerals, there is both a need and opportunity for industry players to put social responsibility at the core of their business."

Set to take up the position in late 2012, Dr Ali previously served as the Professor of Environmental Studies at the University of Vermont's Rubenstein School of Environment and Natural Resources.

He was also the Director of the Institute for Environmental Diplomacy and Security at the University of Vermont's James Jeffords Centre for Policy Research.

He will focus on enhancing CSRМ' s community relations in growing extractive markets such as Mongolia and China and developing a diversified funding base building on synergies between industry, governments and international organisations.

Dr Ali will also be responsible for establishing new collaborations inside SMI' s research and study units such as the Rotary Centre for International Peace and Conflict Resolution.

Dr Ali will replace Professor David Brereton, CSRМ founding Director, who will become SMI' s Deputy Director – Research Integration, with a focus on leading the development and implementation of SMI' s research, collaboration and education in the minerals industry.

In his new role, Professor Brereton will oversee the development of NextMine™ and

NextWorkforce™, two industry-changing initiatives aimed at advancing industry standards and skills in sustainable mining.

" I' d like to thank David for his seminal influence in establishing CSRSM and placing the centre in a world-leading position for the incoming Director," Professor Moran said.

Dr Ali and Professor Brereton will move into their roles in mid-2012.

#### About Dr Saleem Ali

Dr Ali previously served as the Professor of Environmental Studies at the University of Vermont's Rubenstein School of Environment and Natural Resources and the Director of the Institute for Environmental Diplomacy and Security at the University of Vermont's James Jeffords Centre for Policy Research. He is an adjunct faculty of Brown University' s Watson Institute for International Studies and a member of the visiting faculty for the United Nations-mandated University for Peace (Costa Rica). Dr Ali is also involved in numerous non-profit organisations to promote environmental peace-building and serves on the board of the DMZ Forum for Peace and Nature Conservation, International Peace Park Expeditions in the United States and sits on the board of governors for LEAD-Pakistan.

#### About CSRSM

The Centre for Social Responsibility in Mining (CSRSM) is the leading research centre committed to improving the social performance of the resources industry globally. Its focus is on the social, economic and political challenges that occur when change is brought about by resource extraction and development. CSRSM is part of the Sustainable Minerals Institute (SMI).

CSRSM' s partners include some of the world' s biggest resources companies including BHP Billiton, Rio Tinto, Newcrest, Newmont Mining, Xstrata, Anglo American, BG Group and Vale. CSRSM also works with industry bodies such as the Australian Coal Association Research Program, multi-lateral organisations like the World Bank, NGOs including Oxfam and the Responsible Mining Initiative (Mongolia), and small to medium-sized companies focused on improving their sustainability performance. For more information, please visit [www.csrsm.uq.edu.au](http://www.csrsm.uq.edu.au).

#### About SMI

The Sustainable Minerals Institute is made up of seven research centres whose disciplinary roots lie in people, environment and production. Established in 2001, the Institute' s research covers all facets of mining from exploration to site rehabilitation. The Institute has approximately 350 staff including 100 postgraduate students. For more information go to [www.smi.uq.edu.au](http://www.smi.uq.edu.au).

Media Contact: Liliana Campos, Communication Officer, Sustainable Minerals Institute, The University of Queensland, QLD 4072, Phone: +61 7 3346 4111, Email: [l.campos@uq.edu.au](mailto:l.campos@uq.edu.au)  
Website: <http://www.smi.uq.edu.au>

#### Share link:

<http://tinyurl.com/q3kgo9x>



#### Subscribe to the UQ News weekly newsletter

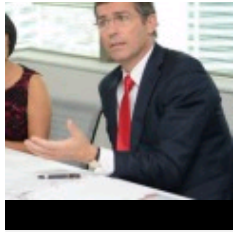
## APPOINTMENTS

[Science of Learning  
Research Centre appoints  
new director](#) 9 May 2014



UQ  
announces  
new  
Catholic  
chaplain  
10 April  
2014

---



UQ opens  
Indonesia  
office 26  
March 2014

---



New Dean  
5 March  
2014

---

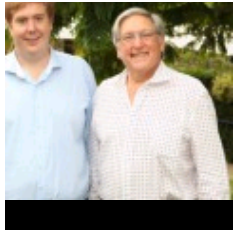


New  
Dean,  
New  
Faculty 5  
March 2014

---

Election of professional staff  
representative to UQ Senate  
11 December 2013

---



A classic  
appointment  
at UQ 29  
November  
2013

---

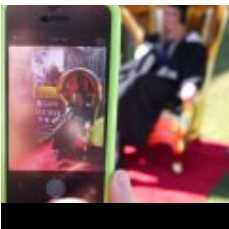
UQ Economics Adjunct  
Associate Professor heads  
State Treasury 21 November  
2013

---

昆士兰大学获得汉办高级顾  
问席位 UQ gains seat at  
Chinese table 15 November  
2013

---

## RECENT HEADLINES



UQ hits  
social  
media

[milestone](#)

28 July

2014

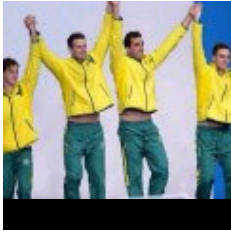


[Hot exhibit](#)

[highlights Queensland architecture](#)

25 July

2014



[Time out for exercise](#)

[exercise](#)

25 July

2014

[More headlines](#)



- [➤ For Media](#)
- [➤ Emergency Contact](#)

[UQ ANSWERS](#)

[3365 3333](#)

- [➤ Giving to UQ](#)
- [➤ Faculties & Divisions](#)
- [➤ UQ Jobs](#)
- [➤ UQ Contacts](#)
- [➤ Services & Facilities](#)
- [➤ Login](#)