

Blank page with faint grid lines.





... (The page contains a dense grid of small, illegible text blocks, likely representing a large table or a highly compressed document. The text is too small to be transcribed accurately.) ...

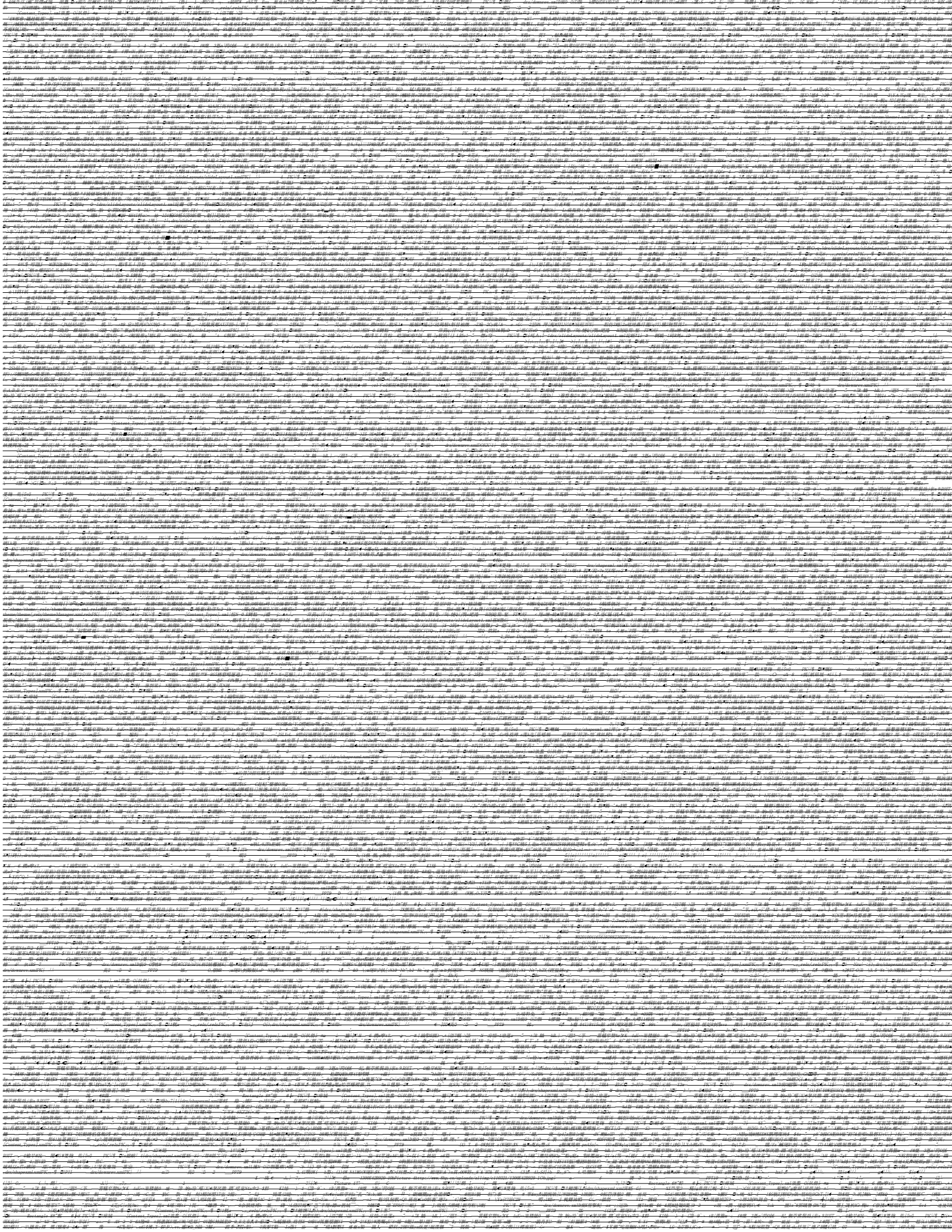
... (The page contains dense, repetitive text, likely a scan of a document with significant noise or bleed-through. The text is mostly illegible due to the quality of the scan and the density of the characters.) ...

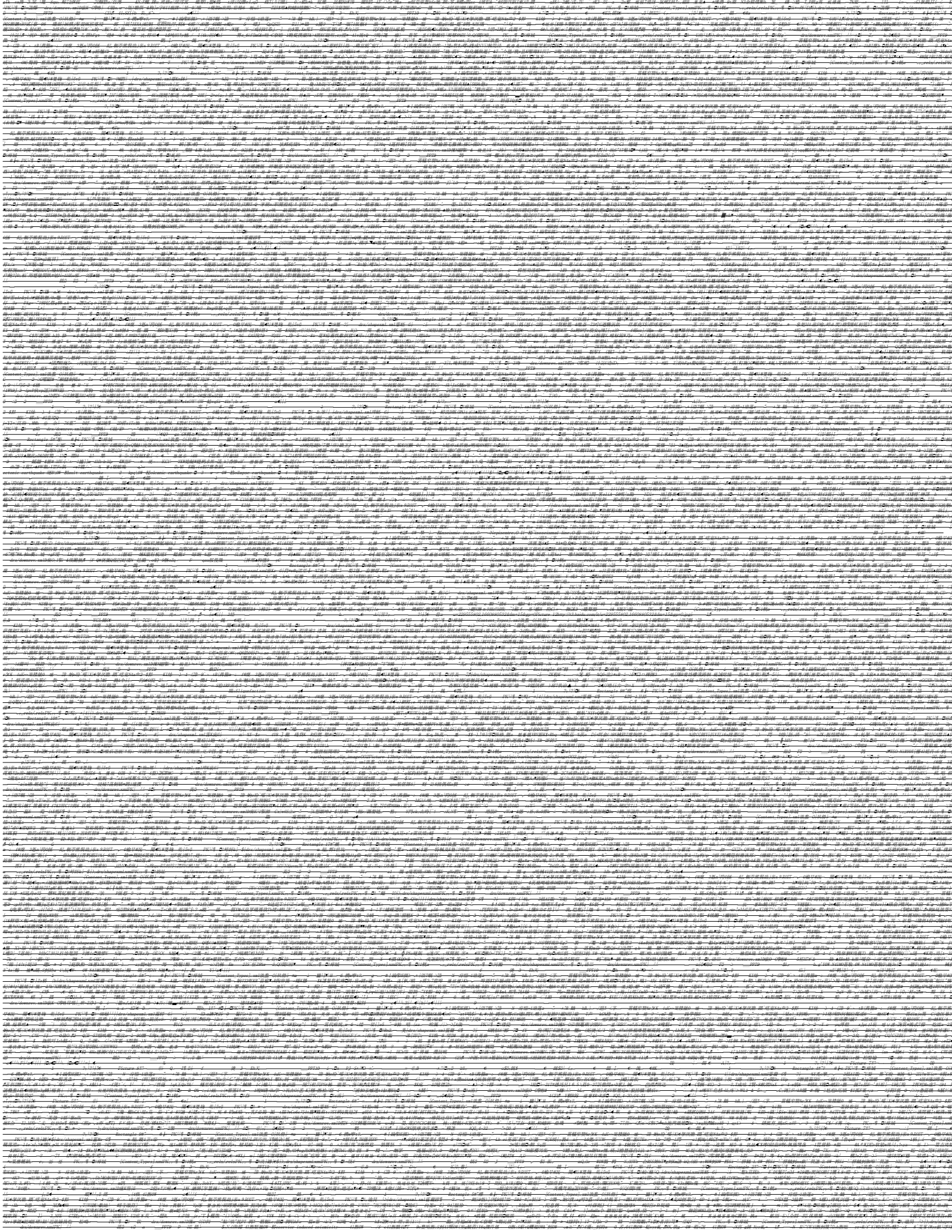


... (The page contains a dense grid of small text, likely a dictionary or a list of terms, which is mostly illegible due to the low resolution and small font size. The text appears to be organized in columns and rows, possibly representing a table or a structured list of entries.) ...

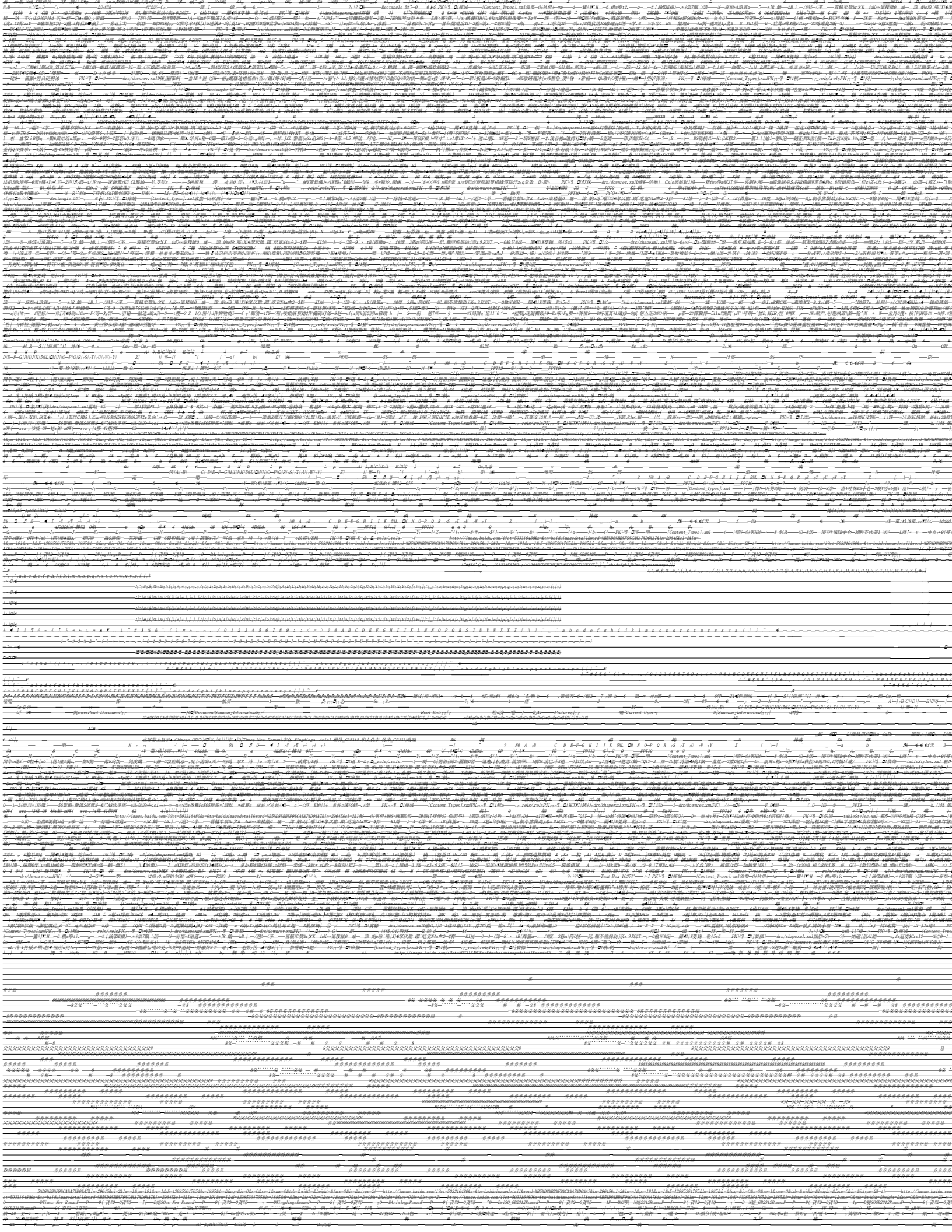
Blank page with faint grid lines.











1. Introduction  
2. Methodology  
3. Results  
4. Discussion  
5. Conclusion

The following text is a placeholder for the main body of the document, which contains detailed information, data, and analysis. The content is currently obscured by a heavy noise pattern.