



双学位



登录

| 中文

| English

搜索

首页

学院概况

| 组织机构

| 科学研究

| 基地建设

| 师资队伍

| 人才培养

| 招生信息

| 人才招聘

| 合作交流

科学研究

研究方向

科研项目

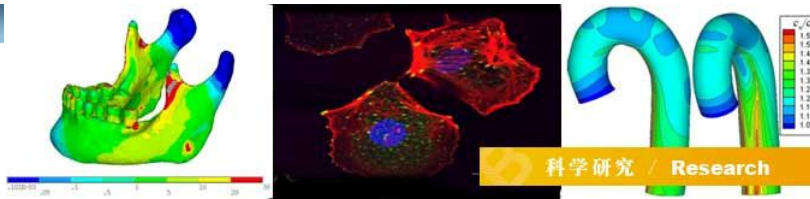
科研成果

- 成果简介
- 学术论文
- 专利
- 获奖
- 微软亚洲研究院项目
- Kinect在健康领域...
- 大数据集病理切片图像...
- 医学电子病历的分析和...

产学研合作

学术会议

网上投稿



学术论文

近年发表SCI论文

序号	作者(所有作者, 通信用*表示)	论文题目	期刊或杂志名称	年、卷、期、页
1	Yanfang Yang, Gongwen Tang, Yunhui Zhao, Xiaoyan Yuan, Yubo Fan(樊瑜波)*	Effect of Cyclic Loading on in Vitro Degradation of Poly(L-lactide-co-glycolide) Scaffolds,	Journal of Biomaterials Science, Polymer Edn	2010(21):53-66
2	Zhong JR, Jia SH, Pu F, Niu HJ, Li SY, Li DY*, Fan YB*	Ultrasound Estimation of Female Urinary Bladder Volumes Based on MR Modeling.	Journal of Urology	2010: 183(1): 216-22
3	Wang MB, Feng QL, Niu XF, Tan RW, She ZD.	A spheres-in-sphere structure for improving protein-loading poly (lactide-co-glycolide) microspheres.	Polymer Degradation and Stability	2010;95(1):6-13.
4	Li SY, Han Y, Wang DY, Yang H, Fan YB, Lv YT, Tang HH, Gong QY, Zang YF, He Y.	Mapping Surface Variability of the Central Sulcus in Musicians.	Cerebral cortex	2010;20(1): 25-33.
5	Ping Li, Xiaoliang Feng, Xiaoling Jia, Yubo Fan,	Influences of tensile load on in vitro degradation of electrospun poly(L-Lactide-co-Glycolide) scaffold,	Acta Biomaterialia,	DOI: 10.1016/j.actbio.2010.02. SCI: IF2008:
6	F Zhan, YB Fan, XY Deng, ZP Xu	The beneficial effect of swirling flow on platelet adhesion to the surface of a sudden tubular expansion tube: its potential application in end-to-end arterial anastomosis	ASAIO Journal	已录用
7	Ding ZF, Fan YB, Deng XY, Zhan F, Kang HY	Effect of swirling flow on the uptakes of native and oxidized LDLs in a straight segment of the rabbit thoracic aorta	Experimental Biology and Medicine	已录用
8	Zhicheng Wang, Suping Li, Quanwei Shi, Rong Yan, Guanglei Liu, Kesheng Dai* .	Calmodulin antagonists induce platelet apoptosis. .	Thrombosis Research	2010, 125: 340-350
9	Zhicheng Wang, Quanwei Shi, Rong Yan, Guanglei Liu, Weilin Zhang, Kesheng Dai* .	The role of calpain in the regulation of ADAM17-dependent GPIIb/IIIa ectodomain shedding. .	Archives of Biochemistry and Biophysics	2010, 495: 136-143
10	Zhicheng Wang, Quanwei Shi, Suping Li, Juan Du, Jun Liu, Kesheng Dai* .	Hyperthermia induces platelet apoptosis and glycoprotein Iba ectodomain shedding.	Platelets	2010 Feb. 16, [Epub ahead of print, in pre:
11	Suping Li, Quanwei Shi, Guanglei Liu, Weilin Zhang, Zhicheng Wang, Yuedan Wang, Kesheng Dai* .	Mechanism of platelet functional changes and the effects of anti-platelet agents on in vivo hemostasis under different gravity conditions.	Journal of Applied Physiology	2010 Feb. 4, [Epub ahead of print, in pre:
12	Zong-Chun Yi, Yan-Ze Liu, Hai-Xia Li, Zhao Wang.	Prooxidant action of chebulinic acid and tellimagrandin I: causing copper-dependent DNA strand breaks.	Toxicology in Vitro	2009,23(3):425-431
13	Zong-Chun Yi 易宗春, Yan-Ze Liu, Hai-Xia Li, Zhao Wang.	Chebulinic acid and tellimagrandin I inhibit DNA strand breaks by hydroquinone/Cu(II) and H ₂ O ₂ /Cu(II), but potentiate DNA strand breaks by H ₂ O ₂ /Fe(II).	Toxicology in Vitro	2009,23(4):667-673
14	Zong-Chun Yi 易宗春, Bing Xia, Guang-Yao Zhang, Ming Xue, Hong Wang, Hui-Min Zhou, Yan Sun, Feng-Yuan Zhuang.	Simulated microgravity inhibits the proliferation of K562 erythroleukemia cells but does not result in apoptosis.	Advances in Space Research	2009,44:233-244
15	Jiangxue Wang (王江雪), Yubo Fan (樊瑜波), Yu Gao, Qinghua Hu (胡奇华), Tiancheng Wang.	TiO ₂ nanoparticles translocation and potential toxicological effect in rats after intraarticular injection.	Biomaterials	2009,30: 4590-4600
16	Qiaojuan Yan, Yanxia Li, Zhengqiang Jiang, Yan Sun 孙艳, Lifen Zhu, Zufeng Ding	Antiproliferation and apoptosis of human tumor cell lines by a lectin (AMML) of Astragalus mongholicus.	Phytomedicine	2009,16:586-593
17	Kesheng Dai 戴克胜*, Rong Yan, Suping Li, Yubo Fan, Fengyuan Zhuang, Changgeng Ruan	Prolonged inhibition of protein kinase A results in the dysfunction of platelet by GPIIb/IIIa shedding	Thrombosis Research	2009, 124 (1): 101-109
18	Kesheng Dai 戴克胜*, Yuedan Wang, Rong Yan, Quanwei Shi, Zhicheng	Effects of microgravity and hypergravity on platelet function	Thrombosis and Haemostasis	2009, 101(5): 902-910

	Wang, Yanhong Yuan, Hong Cheng, Suping Li, Yubo Fan, Fengyuan Zhuang			
19	Rong Yan, Zhicheng Wang, Yanhong Yuan, Hong Cheng, Kesheng Dai 戴克胜*	Role of cAMP-dependent protein kinase in the regulation of platelet procoagulant activity	Archives of Biochemistry and Biophysics	2009, 485(1): 41-48
20	Suping Li, Quanwei Shi, Zhicheng Wang, Rong Yan, Hong Cheng, Kesheng Dai 戴克胜*	Hypergravity Results in Human Platelet Hyperactivity	Journal of Physiology and Biochemistry	2009, 65(2): 147-156
21	Yang Shaoqiang, Jia Boyang, Liu Hong* 刘红	Effects of the Pt loading side and cathode-biofilm on the performance of a membrane-less and single-chamber microbial fuel cell	Bioresource Technology	2009, 100(3): 1197-1202
22	Xie Beizhen, Liu Hong 刘红*, Yan Yixin	Improvement of the activity of anaerobic sludge by low-intensity ultrasound	Journal of Environmental Management	2009, 90(1): 260-264
23	Yang Yunan, Tang Liman, Tong Ling, Liu Hong 刘红*	Silkworms culture as a source of protein for humans in space	Advances in Space Research	2009, 43(8): 1236-1242
24	Yuqi Wang, Jin She, Haiyan Xiang, Yinhua Li, Juan Liu, Deyu Li , Mengsun Yu	Improving Auscultatory Blood Pressure Measurement With Electronic and Computer Technology: The Visual Auscultation Method	American Journal of Hypertension	2009,22(6):624-29
25	AQ Sun, YB Fan 樊瑜波, XY Deng*	Numerical investigation of blood flow in the distal end of an axis-deviated arterial bypass model	Biorheology	2009,46:83-92
26	Ding ZF, Fan YB 樊瑜波, Deng XY*	Effect of LDL concentration polarization on the uptake of LDL by human endothelial cells and smooth muscle cells co-cultured	ACTA BIOCHIMICA ET BIOPHYSICA SINICA	2009,41:146-153
27	Wanqian Liu, Yubo Fan 樊瑜波, Xiaoyan Deng*, Zhangwei Guan, Na Li	Adhesion behaviors of human trophoblast cells by contact with endothelial cells	Colloids and Surfaces B: Biointerfaces	2009,71 :208-213
28	Yubo Fan 樊瑜波, Wentao Jiang, Yuanwen Zou, Jinchuan Li, Junkai Chen, Xiaoyan Deng	Numerical simulation of pulsatile non-Newtonian flow in the carotid artery bifurcation	Acta Mech Sin	2009,25:249-255
29	Lian-wen Sun 孙联文, Yu-bo Fan* , De-yu Li, Feng Zhao, Tian Xie, Xiao Yang, Zhangting Gu;	Evaluation on mechanical properties of rat bone under simulated microgravity condition using nanoindentation.	Acta Biomater	2009, 5(9):3506-3511
30	Qian Yingli, Liu Zhan, Fan Yubo (樊瑜波)*	Numerical simulation of canine bodily movement	Communications in Numerical Methods in Engineering	in press, doi: 10.1002/cnm.1179
31	Long Jie, Tang Wei, Fan Yubo (樊瑜波)*, Tian Wei-dong, Feng Fan, Liu Lei, Zheng Xiao-hui, Jing Wei, Wu Ling	Effects of rapid distraction rate on new bone formation during mandibular distraction osteogenesis in goats	Injury, Int. J. Care Injured,	2009, 40:831-834
32	Fan Yubo (樊瑜波), Kaihua Xiu, Xiang Dong, Bo Wang, Ming Zhang	The influence of mechanical loading on osseointegration: an animal experiment.	Science in China Series C: Life Science	2009, 52(6): 579-584
33	Guo Xin, Fan Yubo (樊瑜波)*, Li Zongming	Effects of dividing the transverse carpal ligament on the mechanical behavior of the carpal bones under axial compressive load: a finite element study	Medical Engineering and Physics	2009, 31(2): 188-194
34	Gong H, Fan Yubo (樊瑜波), Zhang M, Qin L	Age-related adaptation of lumbar vertebral trabecular bone with respect to apparent stiffness and tissue level stress distribution	Acta Mech Sin	2009, 25(1):121-129
35	Nesterenko E. V., Kozlov V. A., Khizhnyak S. V., Manukovsky N. S., Kovalev V. S.*, Gurevich Yu L., Liu Hong , Xing Yidong, Hu Enzhu	Testing anti-fungal activity of a soil-like substrate for growing plants in bioregenerative life support systems	Advances in Space Research	2009, 44(8): 958-964
36	Xiao Liu, Fang Pu (蒲放), Yubo Fan (樊瑜波), Xiaoyan Deng (邓小燕)*, Deyu Li (李德宇), and Shuyu Li (李淑宇)	A numerical study on the flow of blood and the transport of LDL in the human aorta: the physiological significance of the helical flow in the aortic arch.	Am J Physiol Heart Circ Physiol	2009:297(1):163-170
37	Xiong Xin-bo, Zeng Xie-rong, Zou Chun-li, Li Ping , Fan Yun-bo.	Influence of hydrothermal temperature on hydroxyapatite coating transformed from monetite on HT-C/C composites by induction heating method.	Surf. Coat. Technol. Surf. Coat. Technol.	2009; 204(1-2):115-119
38	Xin Gu, Xiaoling Jia , Jinnan Feng, Beifen Shen, Ying Huang, Shusheng Geng, Yingxun Sun, Yugang Wang, Yan li, and Mian Long	Molecular modeling and affinity determination of scFv Antibody: proper linker peptide enhances its activity.	Annals of Biomedical Engineering.	DOI:007/s10439-009 9810-2
39	Zhong, Jinrong; Jia, Shuhan; Pu, Fang; Niu, Haijun ; Li, Shuyu; Li, Deyu; Fan, Yubo	Ultrasound estimation of female bladder volume based on magnetic resonance modeling.	J Urol	2009;183 (1) : 216-20
40	Fan YB, Jiang WT, Zou YW, Li JC, Chen JK, Deng XY*.	Numerical simulation of pulsatile non-Newtonian flow in the carotid artery bifurcation.	Acta Mech Sin	2009;25:249-255.
41	Ding ZF, Fan YB, Deng XY* .	Water filtration rate and infiltration/accumulation of low density lipoproteins in 3 different modes of endothelial/smooth muscle cell co-cultures	Science in China (Series C)	2009;52:1023-1029.
42	Hua Bao, Changhui Rao,* Yudong Zhang, Yun Dai, Xuejun Rao, and Yubo Fan,	Hybrid filtering and enhancement of high-resolution adaptive-optics retinal images,	OPTICS LETTERS	2009,34(22):3484-3488
43			J Thromb Haemost	

	Li S, Wang Z, Liao Y, Zhang W, Shi Q, Yan R, Ruan C, Dai K. J	The glycoprotein Ibalpha-von Willebrand factor interaction induces platelet apoptosis.		2009 Oct 19. [Epub ahead of print]
44	Yuan Y, Zhang W, Yan R, Liao Y, Zhao L, Ruan C, Du X, Dai K. .	Identification of a novel I4-3-3zeta binding site within the cytoplasmic domain of platelet glycoprotein Ibalpha that plays a key role in regulating the von Willebrand factor binding function of glycoprotein Ib-IX.	Circ Res	2009;105(12):1177-85
45	Cheng H, Yan R, Li S, Yuan Y, Liu J, Ruan C, Dai K.	Shear-induced interaction of platelets with von Willebrand factor results in glycoprotein Ibalpha shedding.	Am J Physiol Heart Circ Physiol	2009;297(6):H2128-

[网站地图](#) | [友情链接](#) | [法律声明](#) | [二学位选课](#)

Copyright © 2012 北京航空航天大学生物与医学工程学院 All Rights Reserved.

[网上投稿](#)

地址: 北京航空航天大学逸夫科学馆 邮箱: Bme@buaa.edu.cn 电话: 010-82316427/ 82315554/ 82339416 