

Main body of the page containing a large block of repetitive text, likely a list of items or a data dump.

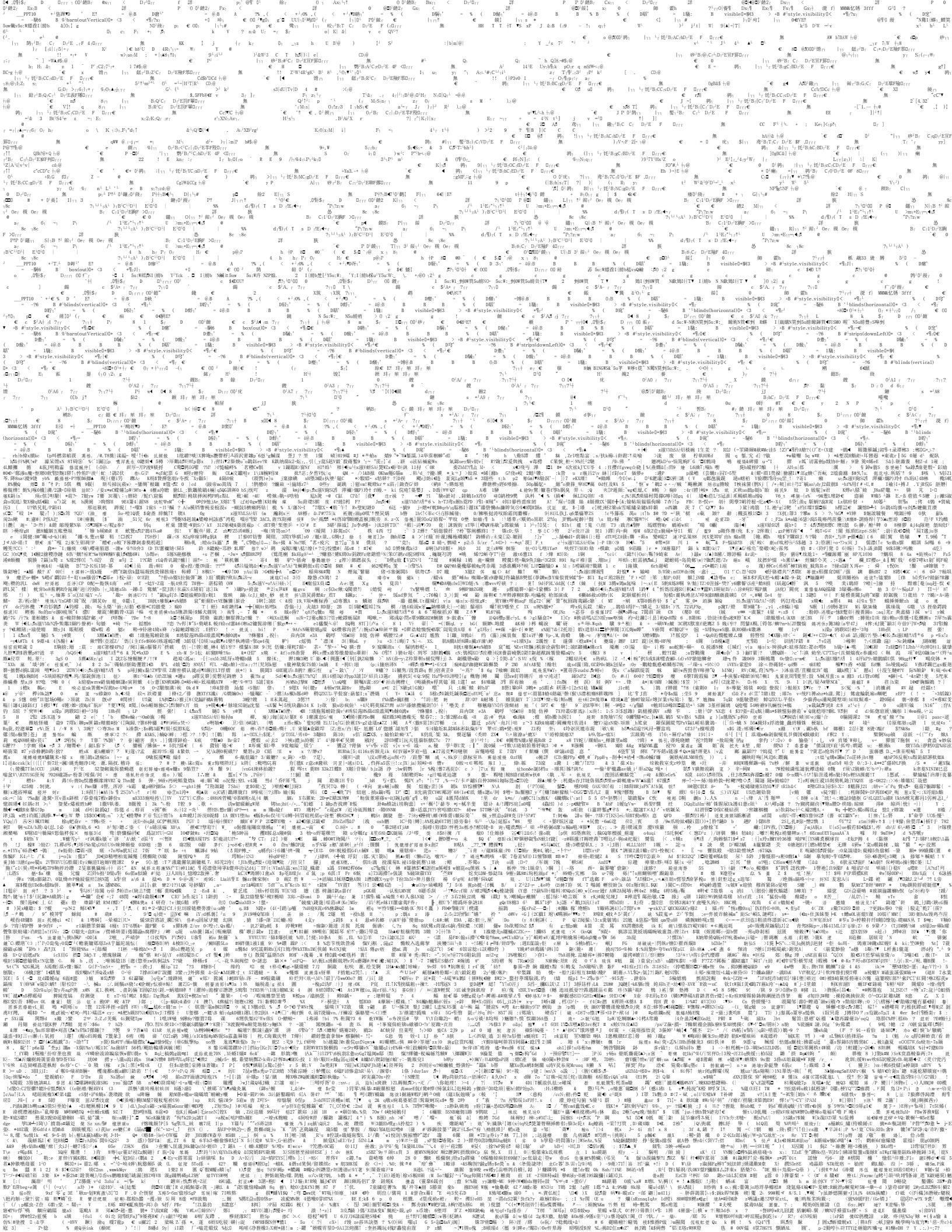
Section of the page containing various mathematical equations and formulas.

Section of the page containing a list of names and identifiers.

Section of the page containing a list of names and identifiers.

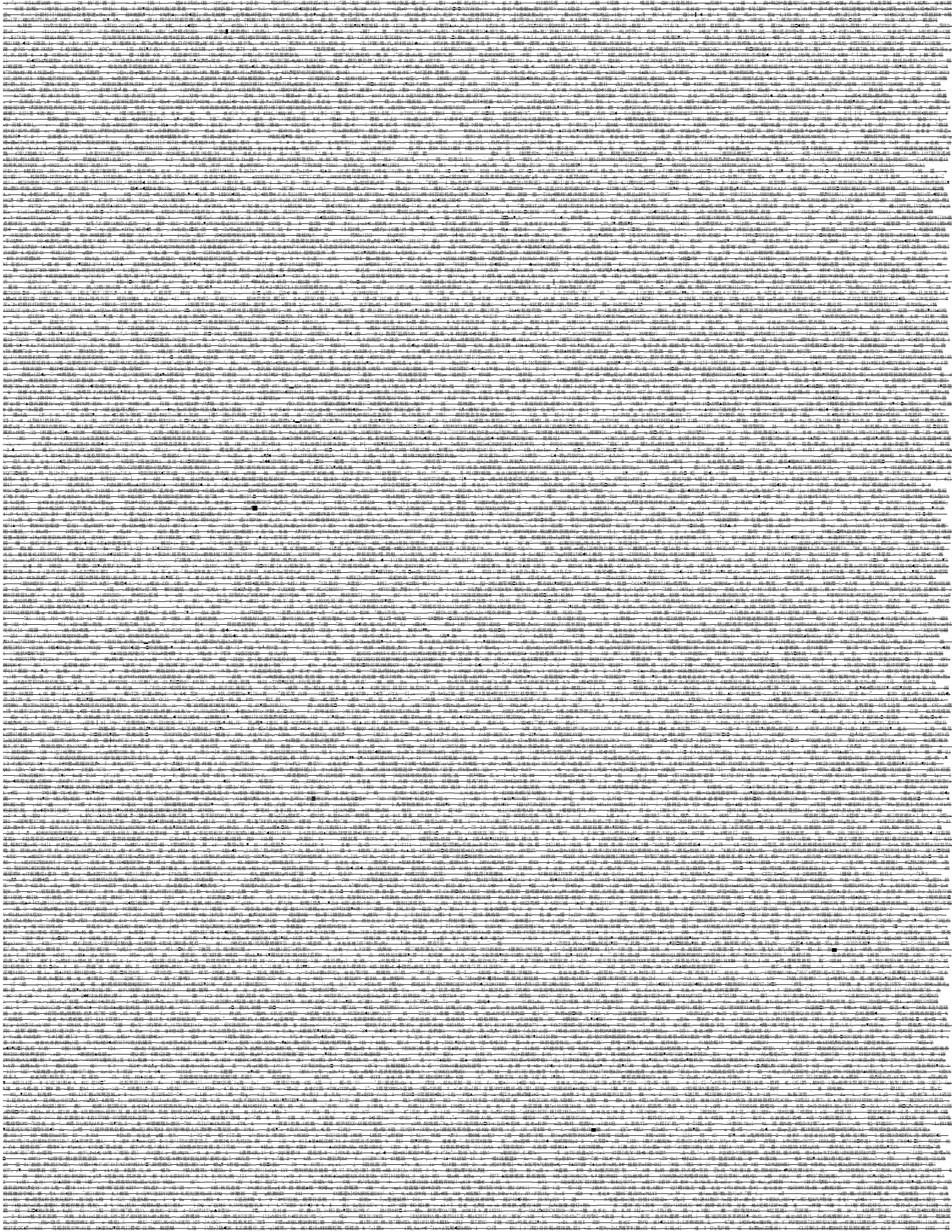
Section of the page containing a list of names and identifiers.

Section of the page containing a list of names and identifiers.





Blank page with minor scanning artifacts.





Blank page with faint horizontal lines, likely a separator page or a page with extremely faint text.

Table with multiple columns and rows, containing faint text and possibly a grid or data table. The text is mostly illegible due to low contrast.

Table with columns: Root Entry, Pictures, Current User, Summary Information, PowerPoint Document, Document Summary Information.