



Go

- Home
- News
- News Archive
- Exchange
- Podcasts
- Site map
- Contact us
- Press Up
- Expertise
- Flu Advisory

- RESOURCES**
- Full Contact List
 - Facts & Figures

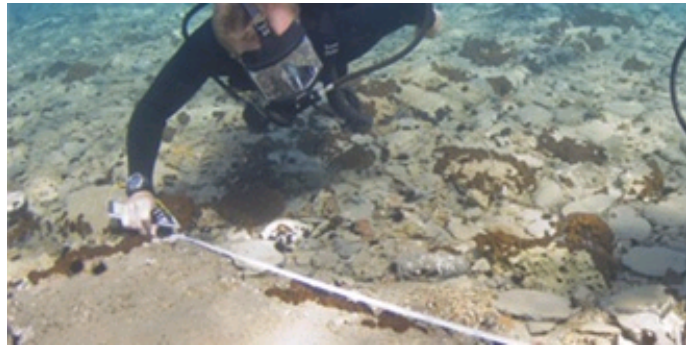
NOTIFICATION SIGN-UP

Receive notifications when new articles are published

[Sign-up](#)

[Home](#) > [News](#) > World's oldest submerged town dates back 5,000 years

NEWS ARTICLE



World's oldest submerged town dates back 5,000 years

Fri, 16 Oct 2009 12:04:00 GMT

Archaeologists surveying the world's oldest submerged town have found ceramics dating back to the Final Neolithic. Their discovery suggests that Pavlopetri, off the southern Laconia coast of Greece, was occupied some 5,000 years ago — at least 1,200 years earlier than originally thought.

These remarkable findings have been made public by the Greek government after the start of a five year collaborative project involving the Ephorate of Underwater Antiquities of the Hellenic Ministry of Culture and The University of Nottingham.

As a Mycenaean town the site offers potential new insights into the workings of Mycenaean society. Pavlopetri has added importance as it was a maritime settlement from which the inhabitants coordinated local and long distance trade.

[Click here for full story](#)

Story Credits

More information is available from Dr Jon Henderson on +44 (0)115 951 4842, jon.henderson@nottingham.ac.uk

FURTHER INFORMATION

Related Articles

No related documents.

Resources

No related links.

Tag Cloud

public health Faculty of Arts
 Faculty of Engineering
 Awards/Prizes Faculty of
 Medicine and Health
 Sciences student

environment **Research**
 Local & Community
 Corporate business history
 Faculty of Business, Law
 and Social Sciences
 International Faculty of
 Science



Lindsay Brooke - *Media Relations
Manager*

Email:
lindsay.brooke@nottingham.ac.uk


Phone: +44 (0)115 951 5751

Location: King's Meadow Campus

QUICKLINKS

[Home](#) | [Site Map](#) | [Contact](#) | [University of Nottingham](#)

University of Nottingham Communications Office, King's Meadow Campus, Lenton Lane, Nottingham NG7 2NR
Phone: +44 (0)115 951 5765 Fax: +44 (0)115 951 5733

Web design by:  Internova