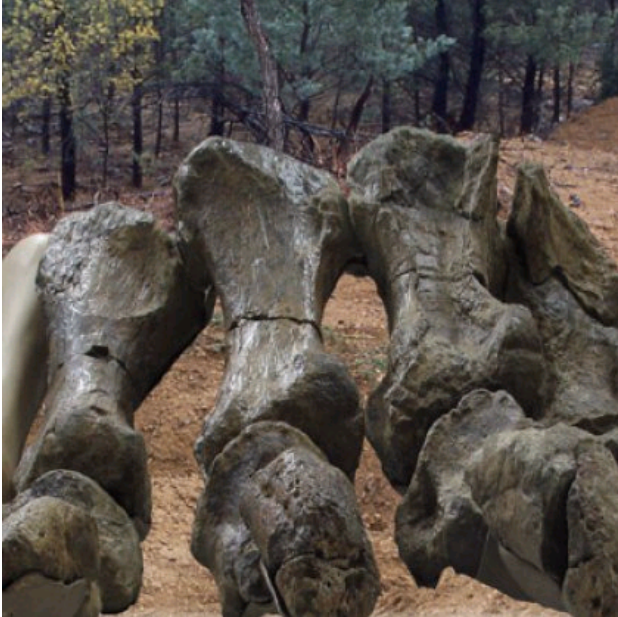


# Breathing new life into old bones



Right hind foot of *Rhoetosaurus brownei*. Photo: Jay Nair and Dr Steve Salisbury, The University of Queensland.

6 March 2012

Research by palaeontologists from The University of Queensland is revealing exciting new insights into one of Australia's most important dinosaur fossils.

"*Rhoetosaurus* is the most complete pre-Cretaceous dinosaur yet discovered in Australia. It therefore provides a valuable insight into the nature of our continent's dinosaur fauna prior to the fragmentation of Gondwana," said Jay Nair, a PhD student from the [School of Biological Sciences](#), and lead author on the new study published in *Journal of Vertebrate Paleontology*.

Although *Rhoetosaurus* has been in the Queensland Museum for several decades, it is only recently that any new research on it has been undertaken.

"Our new study focuses on the lower hind limb," Mr Nair said.

*Rhoetosaurus brownei*, a sauropod from the Middle Jurassic Period, around 165 million years ago, was the country's first named dinosaur. Estimated to have been approximately 18 m long and weighed as much 20 tonnes, it was named in 1926 by Queensland Museum Director Heber Longman.

It is anticipated that this work is likely to reveal more information on the anatomy of this important dinosaur.

The first fossils of *Rhoetosaurus* were found in 1924 by a team of stockmen, mustering horses on a station approximately 50 km north of Roma, south-western Queensland.

When the stockman first stumbled across the gigantic bones, they assumed that they were the remains of an escaped circus elephant.

"It didn't matter that there hadn't been a circus go through Roma for some time, let alone one with elephants. This was only the fourth time that dinosaur fossils had been found in Australia, and all previous discoveries had been of much smaller animals. It's not surprising that no one initially recognised the bones for what they were," co-author of the study Dr Steve Salisbury said.

The original material, a series of weathered vertebrae and fragments of the hip, was found on the bank of a shallow gully.

In 1975, teams from the Queensland Museum and The University of Queensland returned to the site in search of more bones, later recovering an almost complete right lower hind limb.

"The sum of material that has been collected over the years forms a significant portion of a single skeleton," Mr Nair said.

The lower hind limb of *Rhoetosaurus* is very informative, and highlights what a distinctive sauropod it was. Our study indicates that *Rhoetosaurus* was quite an archaic sauropod, only distantly related to the better known titanosauriform sauropods from younger rocks in Queensland, such as Wintonotitan and Diamantinasaurus," Mr Nair said.

"For instance, *Rhoetosaurus* retains four clawed toes on its foot, unlike the majority of younger, more advanced sauropods, which have three."

"When we included new data from the hind limb to test how *Rhoetosaurus* might have been related to other sauropods, we saw no evidence for a close relationship between it and Jurassic sauropods from eastern Asia, as was initially thought to be the case," Mr Nair said.

"As occurs with many other Australian dinosaurs, particularly those from the Cretaceous Period, we suspect that the closest relatives of *Rhoetosaurus* are likely to be found among contemporaneous sauropods from other Gondwanan landmasses," Dr Salisbury explained.

The team are now looking more closely at other parts of the skeleton of *Rhoetosaurus*, and Mr Nair is working with staff and volunteers at the Queensland Museum with the ongoing preparation of the original bones.

"It's great to see this new research being conducted on *Rhoetosaurus*," said Dr Andrew Rozefelds, Head of Geosciences at the [Queensland Museum](#).

"It highlights the fact that as our knowledge of dinosaurs increases, so too does the need to revisit museum collections to reexamine old discoveries. Although *Rhoetosaurus* was the first dinosaur to go into our collections, it's still providing us with exciting new clues into Queensland's unique prehistory."

A new exhibit, [Giants of the Past](#), featuring some of the *Rhoetosaurus* bones, is now on at the Queensland Museum, South Bank. When the current research is completed the museum intends to put the entire skeleton on display.

For further information about dinosaur research at UQ, visit [www.uq.edu.au/dinosaurs](http://www.uq.edu.au/dinosaurs).

Media: Jay Nair (+ 61 447 721 012, [jayraptor@gmail.com](mailto:jayraptor@gmail.com)); Dr Steve Salisbury (+61 7 3365 8548 or + 61 407 788 660, [s.salisbury@uq.edu.au](mailto:s.salisbury@uq.edu.au)); or Allison Rock (+61 7 3346 0561, [a.rock1@uq.edu.au](mailto:a.rock1@uq.edu.au)).

Share link:

<http://tinyurl.com/mno6auf>



Subscribe to the UQ News weekly newsletter

Subscribe

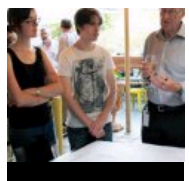


## ENGINEERING + TECHNOLOGY, INDUSTRY COLLABORATION



Public lecture on  
the challenges for  
women in  
engineering 31  
October 2014

## ARTS + SOCIETY, INDUSTRY COLLABORATION



Journalism  
students to report  
on G20 Summit 30  
October 2014

## INDUSTRY COLLABORATION, LAW, TEACHING + LEARNING



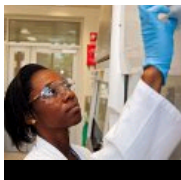
Law students to  
fight for tenants'  
rights 27 October  
2014

**AGRICULTURE + FOOD, GLOBAL  
CHANGE, INDUSTRY  
COLLABORATION, RESEARCH,  
RESOURCES + ENERGY,  
SCIENCE**



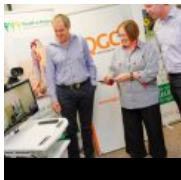
UQ scientists help  
unlock the secrets  
of photosynthesis  
24 October 2014

**AGRICULTURE + FOOD,  
ENVIRONMENT +  
SUSTAINABILITY, INDUSTRY  
COLLABORATION, RESEARCH,  
TEACHING + LEARNING**



Industry backs  
training for healthier  
food 17 October  
2014

**HEALTH + MEDICINE, INDUSTRY  
COLLABORATION**

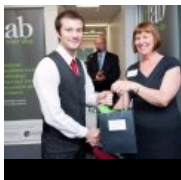


Telehealth for Tara  
and Wandoan 9  
October 2014



Research program  
targets blood  
cancer 12 August  
2014

**BUSINESS + ECONOMY,  
ENGINEERING + TECHNOLOGY,  
INDUSTRY COLLABORATION**

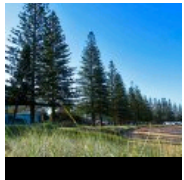


Business ideas can  
bloom in the  
garden of ilab 1  
October 2014

**INDUSTRY COLLABORATION,  
RESOURCES + ENERGY**

\$3.25 million to further coal seam gas  
research 15 August 2014

**RECENT HEADLINES**



Complacency  
rules as  
Queensland  
makes risky  
edict on sea-  
level rise 12  
December 2014



Economics  
graduate blazes  
a trail for  
Indigenous  
peers 12  
December 2014

Universities foster talent for  
supercomputing 11 December 2014

Centre for Advanced imaging team

[More headlines](#)

[Complacency rules as Queensland makes risky edict on sea-level rise](#)

12 December 2014

[Spot the difference: harmless mole or potential skin cancer?](#)

5 December 2014

[Health Check: what you need to know about mucus and phlegm](#)

1 December 2014

[A gift adrift: what the loss of RN's Poetica means to poets](#)

1 December 2014

[Stolen cultural objects: what's the role of Australian galleries?](#)

1 December 2014

[Read more](#) UQ articles on The Conversation

[Home](#) › [Breathing new life into old bones](#)

Brisbane St Lucia, QLD 4072

+61 7 3365 1111

Other Campuses: [UQ Ipswich](#),  
[UQ Gatton](#), [UQ Herston](#)

[Maps and Directions](#)

© 2014 The University of Queensland

A MEMBER OF



[Privacy & Terms of use](#) | [Feedback](#)

Authorised by: Director, Office of Marketing  
and Communications  
ABN: 63 942 912 684  
CRICOS Provider No: 00025B

QUICK LINKS

[For Media](#)

[Emergency Contact](#)

SOCIAL MEDIA

NEED HELP?

EMERGENCY

[3365 3333](#)

EXPLORE

[Giving to UQ](#)

[Faculties & Divisions](#)

[UQ Jobs](#)

[UQ Contacts](#)

[Services & Facilities](#)

[Login](#)