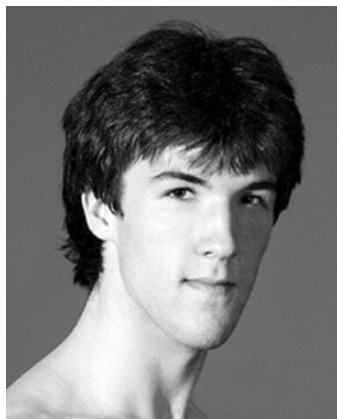


## RODDY DOBLE



Roddy Doble, from Southbury, Connecticut, began dancing at age six and completed the majority of his training at the School of Performing arts in New Milford, Connecticut, under the direction of Arlene Begelman and Robert Maiorano. His studies included extensive work in ballet and jazz with Elizabeth Parkinson, Mary Ann Lamb and Mary MacLeod, as well as tap and modern. During this time, he appeared as a guest artist and choreographer for the Danbury Music Center and the Danbury Symphony Orchestra.

In 2005 he attended American Ballet Theatre 摺 Summer Intensive in New York on a full scholarship and was named a National Training Scholar for the 2006 program. In the interim, he attended the Jacqueline Kennedy Onassis School and appeared as a guest of the ABT Studio Company (now ABT II) on tour in Irvine, California in Ballet Pacifica 摺 2005 *Nutcracker*. In early 2006 Doble attended the School of American Ballet on a full scholarship, after which he participated in American Ballet Theatre 摺 Summer Intensive in New York and Stiefel and Students on Martha 摺 Vineyard.

Doble joined the Studio Company (now ABT II) in August 2006, and was soon named a Chisholm Foundation Scholar. He joined American Ballet Theatre as an apprentice in December 2007 and the corps de ballet in June 2008. His repertoire with the Company includes Lorenzo in *Don Quixote* and a featured role in *Company B*, as well as roles in all of the full-length ballets.