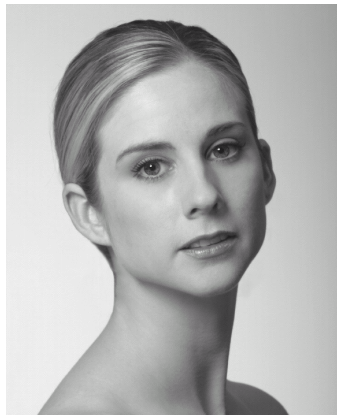


MICHELE WILES



Born in Baltimore, Maryland, Michele Wiles received her early training in Washington, D.C. At the age of ten, she received a full scholarship to the Kirov Academy of Ballet in Washington, D.C. where she studied from 1991 to 1997. Wiles also participated in the summer programs at The Joffrey Ballet and The Royal Ballet before joining American Ballet Theatre's Studio Company in 1997.

In 1996, Wiles was a Gold Medal winner at the 18th International Ballet Competition in Varna, a Bronze Medal winner in Nagoya, Japan and a finalist at the Paris International Dance Competition. She was a Princess Grace Foundation -- U.S.A. Dance Fellowship recipient for 1999-2000 and won the Erik Bruhn Prize in 2002.

Wiles joined American Ballet Theatre in 1998 and was promoted to Soloist in 2000 and to Principal Dancer in 2005. Her roles with the Company include Polyhymnia in *Apollo*, Gamzatti and a Shade in *La Bayadère*, the Fairy Godmother and the Winter Fairy in Ben Stevenson's *Cinderella*, Aurora in *Coppélia*, Medora and an Odalisque in *Le Corsaire*, Kitri, Queen of the Dryads and a flower girl in *Don Quixote*, Hermia in *The Dream*, Moyna in *Giselle*, *Grand Pas Classique*, His Experiences in *HereAfter*, Lescaut's Mistress in *Manon*, the Sugar Plum Fairy and the Snow Queen in *The Nutcracker*, Hagar in *Pillar of Fire*, the Siren in *Prodigal Son*, Raymonda and Clemence in *Raymonda*, a Harlot in *Romeo and Juliet*, Princess Aurora and Lilac Fairy in *The Sleeping Beauty*, Odette-Odile, the pas de trois and the Polish Princess in *Swan Lake*, Ceres and the title role in Sylvia, the fourth movement in *Symphony in C*, the Tall Whore and the pas de six in *The Taming of the Shrew*, the *Tchaikovsky Pas de Deux*, and leading roles in *Baker's Dozen*, *Ballet Imperial*, *Ballo della Regina*, *Black Tuesday*, *The Brahms-Haydn Variations*, *Dark Elegies*, *Diversion of Angels*, *Drink To Me Only With Thine Eyes*, *Fluores*, *Glow - Stop*, *In The Upper Room*, *The Leaves Are Fading*, *Marimba*, *Petite Mort*, *Sinfonietta*, *Symphonie Concertante*, *Theme and Variations* and *workwithinwork*.

She created leading roles in *Concerto No. 1 for Piano and Orchestra*, *Gong* and *Within You Without You: A Tribute to George Harrison*.

Performing in:

- [La Bayadère](#) 6/23/2008, 6/24/2008, 6/28/2008
- [Don Quixote](#) 6/13/2008
- [Swan Lake](#) 5/27/2008
- [Giselle](#) 7/8/2008, 7/10/2008, 7/12/2008
- [Le Corsaire](#) 5/23/2008
- [Le Corsaire](#) 7/20/2008
- [The Sleeping Beauty](#) 6/17/2008, 6/18/2008, 6/21/2008
- [Etudes](#) 6/4/2008, 6/6/2008
- [Etudes](#) 7/31/2008
- [Don Quixote](#) 8/3/2008
- [La Bayadère pas de deux](#) 7/17/2008, 7/18/2008
- [La Bayadère pas de deux](#) 7/26/2008
- [Etudes](#) 8/6/2008, 8/9/2008
- [Etudes \(excerpts\)](#) 5/19/2008