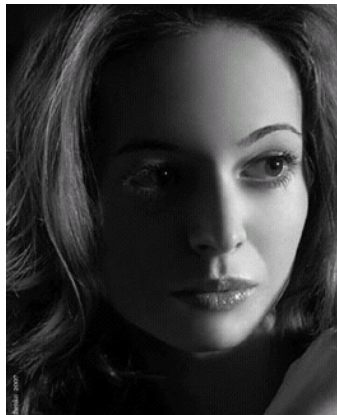


## DIANA VISHNEVA



Born in St. Petersburg, Russia, Diana Vishneva graduated from the Vaganova Ballet Academy, joined the Mariinsky Theatre Ballet in 1995 and was promoted to principal in 1996. During her last year at the Academy, Vishneva began working at the Mariinsky Theatre. Her repertoire with the company includes the title roles in *Giselle* and *Manon*, Kitri in *Don Quixote*, Masha in *The Nutcracker*, Nikiya in *La Bayadère*, Juliet in *Romeo and Juliet*, Princess Aurora in *The Sleeping Beauty*, Clemance in *Raymonda*, Gulnare in *Le Corsaire*, the third movement in *Symphony in C*, Terpsichore in *Apollo*, Rubies in *Jewels*, *Tchaikovsky Pas de Deux* and *Grand Pas Classique*, among others.

Vishneva's prizes and awards include the International Ballet Competition in Lausanne (1994), Benois de la Dance prize (1995), the St. Petersburg theatrical prize Golden Sophit (1996), the BALTIKA prize (1998), the highest theatrical prize of Russia Golden Mask (2001) and was named Best in Europe by Dance Europe magazine in 2002.

Vishneva has appeared in New York and Mexico City and danced at the Second International Ballet Festival with Manuel Legris, Rudolf Nureyev's student, as her partner. In 2001, she made her debuts at the Bayerische Staatsballett in *Manon* and the *Teatro alla Scala*, Milan in *The Sleeping Beauty*.

Ms. Vishneva's performances with American Ballet Theatre are sponsored by Theresa Khawly.

### Performing in:

- [Swan Lake](#)
- [Giselle](#)
- [The Dying Swan](#) 5/19/2008