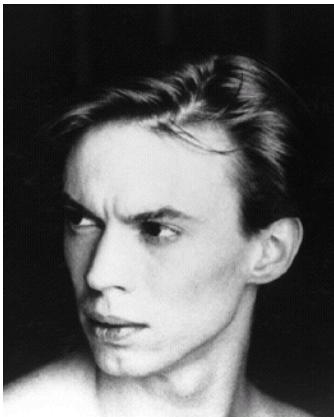


VLADIMIR MALAKHOV



Born in Krivoy Rog, Ukraine, Vladimir Malakhov began his dance training at age 4 at a local ballet school there. He continued his studies at the Bolshoi Ballet School from age 10, and upon graduation in 1986 joined the Moscow Classical Ballet as the company's youngest Principal Dancer.

Malakhov's roles with the Moscow Classical Ballet included Adam in *Creation of the World*, Basil and Gamache in *Don Quixote*, a leading role in *Natalie*, Romeo and Mercutio in *Romeo and Juliet*, Prince Siegfried, Benno and the Venetian Dance in *Swan Lake*, Albrecht in *Giselle*, and the leading roles in George Balanchine's *Theme and Variations* and Kasyan Golezovsky's *Narcissus*, as well as many classical pas de deux. As a guest artist he has danced Lensky in *Eugene Onegin*, the Mazurka in *Suite en Blanc*, Oberon in *A Midsummer Night's Dream*, Prince Desire in *The Sleeping Beauty* and the Prince and the Snow King in *The Nutcracker*.

Malakhov joined the Vienna State Opera Ballet as a Principal Soloist in 1992. He has also appeared as a guest artist with the National Ballet of Canada since 1994, and as Principal Guest Artist-in-Residence with the Stuttgart Ballet.

Among the awards Malakhov has received are the Grand Prize, junior level at the International Ballet Competition, Varna in 1986; the Gold Medal, senior level, and the Serge Lifar Prize at the International Ballet Competition, Moscow in 1989; and the Bronze Medal, senior level, International Ballet Competition, Jackson in 1990. In the United States he has appeared in the Moscow Classical Ballet tour in 1988, and as a guest artist with the Bolshoi Ballet Academy tour in 1989 and the Los Angeles Classical Ballet in 1991.

Malakhov was named "best male dancer in the world" by Japan's Dance Magazine for three consecutive years, 1992-1994. He is the subject of three films -- *Bravo Malakhov* (1991), *Narcise. The Dancer Malakhov* (1993) and *The True Prince* (1996).

Malakhov joined American Ballet Theatre as a Principal Dancer in spring 1995. His repertoire with the Company includes the title role in *Apollo*, Solor in *La Bayadère*, Franz in *Coppélia*, Lankendem in *Le Corsaire*, Partner to the French Ballerina in *Gala Performance*, Albrecht in *Giselle*, the pas de deux *Grand Pas Classique*, Des Grieux in *Manon*, Romeo in *Romeo and Juliet*, Prince Desire in *The Sleeping Beauty*, James in *La Sylphide*, Prince Siegfried and von Rothbart, Act III in *Swan Lake*, *Tchaikovsky Pas de Deux*, the third and fourth variations in *Variations for Four*, and leading roles in *Ballet Imperial*, *The Brahms/Haydn Variations*, *Diversion of Angels*, *Drink To Me Only With Thine Eyes*, *Les Sylphides*, *Les Sylphides* and *Symphonie Concertante*. Malakhov created leading roles in *Remanso* and *Without Words*.

Mr. Malakhov's performances with American Ballet Theatre are sponsored by The Ranieri Family.