

The Company

- Artistic Staff
- Company Dancers
- Orchestra
- Administration
- Board of Trustees
- Company Auditions
- Boston Ballet II

Behind the Scenes

History

Employment

News & Press

Mission Statement

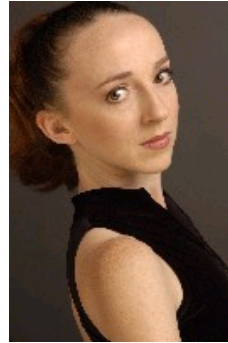
Volunteer
Association

Melanie Atkins

Soloist

Reading, England
Joined Boston Ballet in 2002

Melanie Atkins trained at Walnut Hill School of the Arts after her family moved from England to Massachusetts. She danced with Fort Worth Dallas Ballet before joining Miami City Ballet in 1997, where she rose to the rank of principal dancer. In 1999 Atkins worked with Maria and Marjorie Tallchief in conjunction with The George Balanchine Foundation Interpreters Archive, which preserves the choreographer's legacy on video. Atkins joined Boston Ballet as a soloist in 2002. Her repertory includes Marius Petipa's *The Sleeping Beauty* (Lilac Fairy, The Countess) and *Raymonda, Act III*; Mikko Nissinen's *The Nutcracker*; August Bournonville's *La Sylphide*; James Kudelka's *Cinderella* (Stepsister, Twig); Val Caniparoli's *Lady of the Camellias* (Marguerite); George Balanchine's *Prodigal Son*, *Serenade*, *Monumentum/Movements*, *Duo Concertant* and *Rubies*; Helen Pickett's *Etesian*; Jorma Elo's *Plan to B*; Bronislava Nijinska's *Les Noces*; and Jiri Kylian's *Falling Angels*. Atkins is married to Soloist Sabi Varga.



[← Back to Company Dancers](#)