

The Company

- Artistic Staff
- Company Dancers
- Orchestra
- Administration
- Board of Trustees
- Company Auditions
- Boston Ballet II

Behind the Scenes

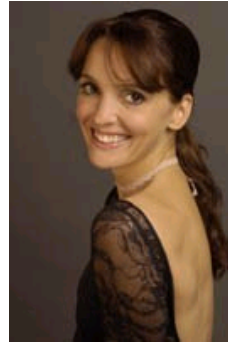
- History
- Employment
- News & Press
- Mission Statement
- Volunteer Association

Karine Seneca

Principal

Cannes, France
Joined Boston Ballet in 2004

Karine Seneca received her ballet training at the Rosella Hightower School in Cannes. She was 17 when she joined Basel Ballet, under the direction of Heinz Spoerli, and two years later she moved on to Dusseldorf Ballet. Seneca was a principal dancer at the Zurcher Ballet in Switzerland prior to joining Boston Ballet as a soloist in 2004. She was promoted to principal dancer in 2005. Her repertory with Boston Ballet includes August Bournonville's *La Sylphide*, Mikko Nissinen's *The Nutcracker*, Jorma Elo's *Carmen* (title role), John Cranko's *The Taming of the Shrew* (Bianca) Val Caniparoli's *Lambarena*, Mark Morris' *Up and Down*, Michel Fokine's *The Dying Swan*, Bronislava Nijinska's *Les Noces* (Bride), George Balanchine's *Divertimento No. 15*, William Forsythe's *In the middle, somewhat elevated*, Jiri Kylian's *Falling Angels*, and Marius Petipa's *Raymonda, Act III*.



[← Back to Company Dancers](#)