

DEPARTMENT OF  
**SECOND LANGUAGE STUDIES**



- SLS HOME
- ADMISSIONS
- DEGREES
- COURSES
- FACULTY
  - Abe
  - Bardovi-Harlig
  - Darcy
  - deJong
  - Dekydtspotter
  - Félix-Brasdefer
  - Friedman
  - Geeslin
  - Hartford
  - LeSourd
  - Shin
  - Sprouse
  - Stringer
  - Yilmaz
- VISITING SCHOLARS
- PUBLICATIONS
- ENGLISH LANGUAGE INSTRUCTION
- CONTACT US

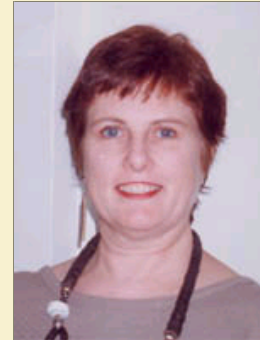
*MEET THE FACULTY*

**Beverly Hartford**

- Professor Emerita

**Education**

- PhD, Applied Linguistics, University of Texas, 1974



**Contact Information**

Memorial Hall 313  
Indiana University  
Bloomington, IN 47405  
Phone: (812) 855-2680  
[hartford@indiana.edu](mailto:hartford@indiana.edu)

**Research Interests**

World Englishes, Pragmatics, Discourse Analysis, Sociolinguistics

**Personal Statement**

My research interests center primarily around the question of how nonnative varieties of English develop their own linguistic systems as a result of contact with the native language(s) of the community. The particular developing subsystems I am interested in are pragmatics and sociolinguistic norms, and certain syntactic changes as well. The variety of English which has been my major focus is the English used in Nepal, Nepali English.

Along with Prof. Gradman, I was instrumental in establishing the program formerly known as TESOL and

Applied Linguistics. He and I were the sole faculty members for several years. During that time I had several opportunities to live abroad and to travel internationally extensively. I believe these experiences have enriched my professional life in uncountable ways.

Over this period of years, I have been very actively involved with graduate students and, in fact, have directed and/or served on over 100 PhD committees during that time, and continue to do so. I received three Senior Research Fellow Fulbright grants. The first was for Poland, 1975-76. The other two were for Nepal, 1984-85 and 1993. My work on World Englishes, especially on Nepali English derived from the latter two grants.

I am currently co-editor of two new journals being published by Nova Press: *Issues in Political Discourse Analysis* and *Issues in Intercultural Communication*. These journals especially encourage an international authorship and look for studies from professionals throughout the world. We include and seek work from Africa, Asia, South America as well as from Europe and North America.

### **Courses Recently Taught**


- Applied Sociolinguistics
- World Englishes
- Interlanguage Pragmatics
- Traditional Grammar
- Bilingualism and Language Contact
- Contrastive Discourse

### **Selected Recent Publications**

Bardovi-Harlig, K, and B. Hartford (Eds) (2005)  
*Interlanguage Pragmatics: Exploring Institutional Talk*. New Jersey: Earlbaum.

Obeng, Samuel G. and B. Hartford (Eds) (2002) *Surviving Through Obliqueness: Language of Politics in Emerging Democracies*. New York: Nova.

Obeng, Samuel G. and B. Hartford (Eds.) (2002) *Political Independence with Linguistic Servitude: Politics about Languages in the Developing World*. New York: Nova.

 Indiana University | Indiana University Bloomington | College of Arts & Sciences | Second Language Studies

1021 E. Third St., Memorial Hall 315, Indiana University, Bloomington, IN 47405 |

[dsIs@indiana.edu](mailto:dsIs@indiana.edu)

Copyright 2014, The Trustees of Indiana University | [Copyright Complaints](#) | [Privacy Notice](#) | Last Updated: 2/2014