

Q

F

A

I

F

F



National Science Foundation
WHERE DISCOVERIES BEGIN

F

A

N

I

C

T
E
4
A
V

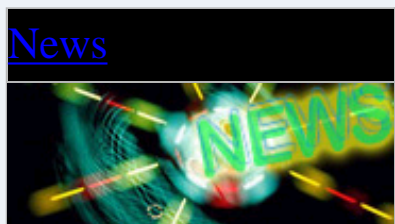
T
E
T

S

- [Home](#)
- [Funding](#)
 - [Search Funding Opportunities](#)
 - [Browse Opportunities A-Z](#)
 - [Recent Opportunities](#)
 - [Due Dates](#)
 - [Preparing Proposals](#)
 - [Policies & Procedures](#)
 - [Merit Review](#)
 - [Interdisciplinary Research](#)
 - [Transformative Research](#)
 - [About Funding](#)
- [Awards](#)
 - [About Awards](#)
 - [Managing Awards](#)
 - [Policies & Procedures](#)
 - [Award Conditions](#)
 - [Search Awards](#)
 - [Presidential & Honorary Awards](#)
 - [Award Statistics \(Budget Internet Info System\)](#)
- [Discoveries](#)
 - [Discoveries Home](#)
 - [Arctic & Antarctic](#)
 - [Astronomy & Space](#)
 - [Biology](#)

- [Chemistry & Materials](#)
- [Computing](#)
- [Earth & Environmental Science](#)
- [Education](#)
- [Engineering](#)
- [Mathematics](#)
- [Nanoscience](#)
- [People & Society](#)
- [Physics](#)
- [Search Discoveries](#)
- [About Discoveries](#)
- [News](#)
 - [News Home](#)
 - [For News Media](#)
 - [Multimedia Gallery](#)
 - [Special Reports](#)
 - [News from the Field](#)
 - [Research Overviews](#)
 - [Speeches & Lectures](#)
 - [NSF Current Newsletter](#)
 - [NSF-Wide Investments](#)
 - [News Archive](#)
 - [Search News](#)
- [Publications](#)
 - [Publications Home](#)
 - [Search Publications](#)
 - [Obtaining Publications](#)
- [Statistics](#)
 - [NCSES Home](#)
 - [NCSES Data](#)
 - [NCSES Publications](#)
 - [NCSES Surveys](#)
 - [NCSES Topics](#)
 - [Search NCSES](#)
 - [About NCSES](#)
- [About NSF](#)
 - [About NSF](#)
 - [History](#)
 - [Visit NSF](#)
 - [Contact NSF](#)
 - [Staff Directory](#)
 - [Organization List](#)
 - [Career Opportunities](#)

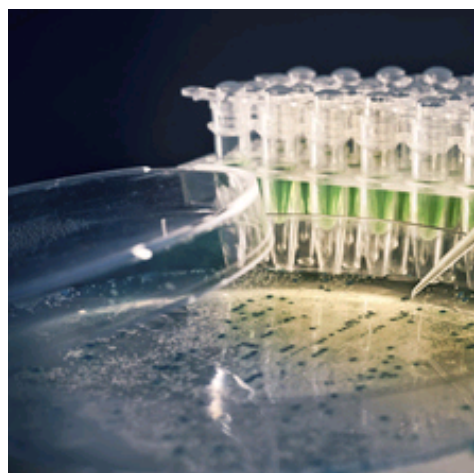
- [Contracting Opportunities](#)
- [NSF & Congress](#)
- [Budget](#)
- [Performance Assessment Info](#)
- [Partners](#)
- [Broadening Participation/Diversity](#)
- [Office of Diversity & Inclusion](#)
- [Fastlane](#)



- [News](#)
- [News From the Field](#)
- [For the News Media](#)
- [Special Reports](#)
- [Research Overviews](#)
- [NSF-Wide](#)
- [Investments](#)
- [Speeches & Lectures](#)
- [NSF Current](#)
- [Newsletter](#)
- [Multimedia Gallery](#)
- [News Archive](#)

- [News by Research Area](#)
- [Arctic & Antarctic](#)
- [Astronomy & Space](#)
- [Biology](#)
- [Chemistry & Materials](#)
- [Computing](#)
- [Earth & Environment](#)
- [Education](#)
- [Engineering](#)
- [Mathematics](#)
- [Nanoscience](#)
- [People & Society](#)

Press Release 14-016
 NSF study reveals slight research and federally funded centers



The nation's 39 federally funded R&D centers spent \$2.2 billion on R&D in FY 2012.

[Credit and Larger Version](#)

January 29, 2014

A recent [survey](#) from the National Science Foundation found that the nation's 39 federally funded research and development centers (FFRDCs) spent \$2.2 billion on research and development (R&D) in FY 2012. These data reveal a slight decline from \$2.3 billion in FY 2011.

Between FY 2010 and 2012, one-time funding from the American Recovery and Reinvestment Act of 2009 funded expenditures for FFRDCs by \$2.2 billion.

FFRDCs are privately operated R&D exclusively or substantially financed government. FFRDCs provide the sp agencies with capabilities to meet sp needs that cannot be met as effective contractor resources. Funding from f accounted for 97.5 percent (\$17 billion total expenditures in FY 2012.

FFRDCs also receive funding from a nonfederal sponsors. These sources a percent (\$440 million) of the FFRDC FY 2012, FFRDCs reported \$184 million expenditures funded by businesses, \$39 million nonprofit organizations, \$39 million local governments and an additional all other nonfederal sources.

The type of work performed across the distributed between basic research, applied development in FY 2012.

For more information on this report, [Britt](#).

Please visit the [NSF's National Center for Engineering Statistics](#) for more reports.

-NSF-

Media Contacts

Deborah Wing, NSF, (703) 292-5344

Program Contacts

Ronda Britt, NSF, (703) 292-7765, [rbritt@nsf.gov](#)

The National Science Foundation (NSF) is a federal agency that supports fundamental research and education across all fields of science. In fiscal year (FY) 2014, its budget is \$7.5 billion. NSF reaches all 50 states through grants to

*universities and other institutions. E
about 50,000 competitive requests f
about 11,500 new funding awards. .
\$593 million in professional and ser*

 [Get News Updates by Email](#)

Useful NSF Web Sites:

NSF Home Page: <http://www.nsf.gov>

NSF News: <http://www.nsf.gov/new>

For the News Media: <http://www.nsf>

Science and Engineering Statistics:

<http://www.nsf.gov/statistics/>

Awards Searches: <http://www.nsf.gov>

Email  Print 

